

**YC4F115-30(F50SA)柴油机**

# 零件图册

**Parts Catalogue of YC4F115-30(F50SA) Diesel Engine**

广西玉柴机器股份有限公司  
Guangxi Yuchai Machinery Co., Ltd.

2008年12月

December 2008

# 前 言

## Foreword

感谢您选用广西玉柴机器股份有限公司的产品，并感谢您阅读《YC4F115-30 (F50SA) 柴油机零件图册》！

Thanks for using Yuchai engine and reading the “Parts Catalogue of YC4F115-30 (F50SA) Diesel Engine”!

玉柴的服务宗旨是：“倾我所有、尽我所能、竭诚用户、诚信天下”，为了更好地履行玉柴的服务宗旨，我们编印了 YC4F115-30 (F50SA) 柴油机零件图册》，希望本图册可以让用户更好地认识了解玉柴产品的结构与配置，方便用户使用、维修和购置零配件。

With the aim to fulfill our company service tenet, i.e. “striving all out to serve the customers, spending full sincerity to confidence the world”, we compiled and printed this “Parts Catalogue of YC4F115-30 (F50SA) Diesel Engine”. We hope this “Parts Catalogue of YC4F115-30 (F50SA) Diesel Engine” will help you to understand the structure and configuration of Yuchai’s YC4F115-30 (F50SA) diesel engines, so to operate and maintain them easily.

本零件图册是根据 2008 年 12 月相关生产图样、资料编制而成的。图册中列出了 YC4F115-30 (F50SA) 柴油机的全部零部件目录。

This “Parts Catalogue of YC4F115-30 (F50SA) Diesel Engine” is compiled by basing on the production samples and technical documents in December 2008, and covers the engine model of YC4F115-30 (F50SA) diesel engine.

随着产品的不断改进提高和用户不断提出新的要求，《YC4F115-30 (F50SA) 柴油机零件图册》中的有关内容将会有不同程度的变更，玉柴保留在不预先通知的情况下进行修改的权利，具体配置情况应以当时产品技术文件为依据。

As production improvements and consumer’s requirements are constantly brought up, the content of this “Parts Catalogue of YC4F115-30 (F50SA) Diesel Engine” must be changed at a certain extent, which Yuchai reserves the right to modify without formal notification beforehand. The engine’s idiographic configuration is according to its technical documents.

本零件图册编写不足之处在所难免，敬请多多指教，使之渐臻完善。谢谢！

Deficiencies may appear in this “Part Catalogue of YC4F115-30 (F50SA) Diesel Engine”, and your comments and suggestions are appreciated honestly!

广西玉柴机器股份有限公司  
Guangxi Yuchai Machinery Co., Ltd.

## 目 录 CONTENT

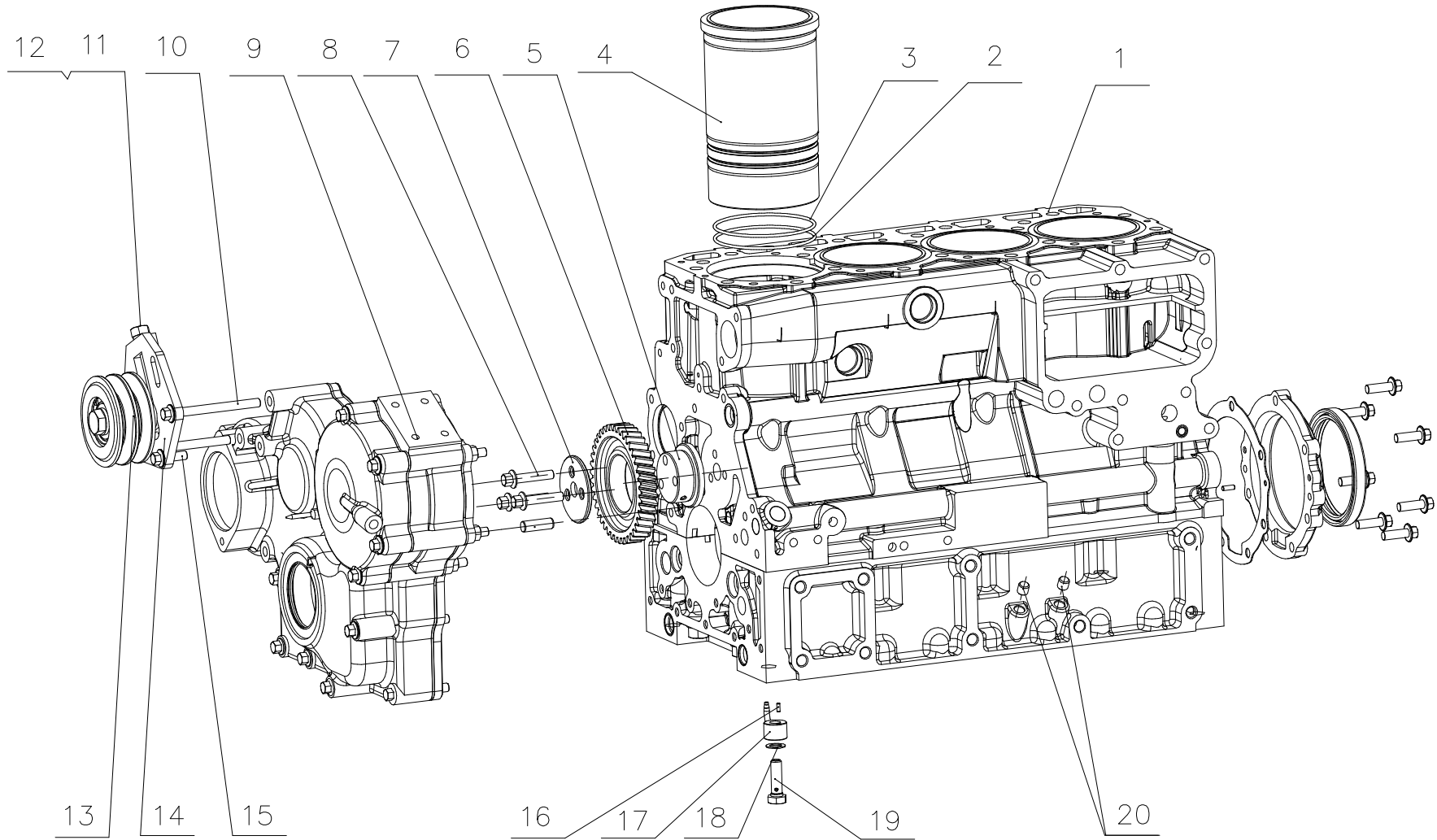
序号 Item	图 号 Part No.	名 称	Parts Name	页数 Page	备注 Remark
1	F50JX-1002000/01	气缸体总成	Cylinder Block Assembly		
2	F5000-1002100/04	气缸体部件	Cylinder Block Parts		
3	F50JX-1002200/02	齿轮室部件	Gear Housing Parts		
4	F5001-1003000/01	气缸盖及气缸盖罩总成	Cylinder Head& Cylinder Head Cover Assembly		
5	F5000-1004000/03	活塞及连杆总成	Piston& Connecting Rod Assembly		
6	F30SA-1005000/06	曲轴减振器总成	Crankshaft Vibration Damper Assembly		
7	F3700-1006000/05	凸轮轴总成	Camshaft Assemblby		
8	F3000-1007000/10	配气机构总成	Valve Train System Assembly		
9	F50JA-1008100/05& F31NA-1008500/02	进气管部件& 进气接管部件	Intake Manifold Subassembly& Intake Connecting Pipe Parts		
10	F30SA-1008200/07& F30SA-1008400/01	排气管部件& 排气管护罩部件	Exhaust Manifold Subassembly& Exhaust Manifold Cover Parts		
11	F30JA-1009000/01	油底壳总成	Oil Sump Assembly		
12	F50JG-1028000/01	油标尺总成	Oil Dipstick Assembly		
13	F3000-1010000A/05	机油集滤器总成	Oil Strainer Assemblby		
14	F3000-1011000/05	机油泵总成	Oil Pump Assembly		
15	186-1012000/04	机油滤清器	Oil Filter		
16	F50J1-1013000/04	机油冷却器总成	Oil Cooler Assembly		
17	F5201-1014000/05	呼吸器总成	Breather Assembly		
18	F5000-1015000/06	发动机起动机辅助装置总成	Engine Start Auxiliary Device Assembly		
19	F5000-1104000/06	供给系管路总成	Fuel Supply Pipeline Assembly		

20	F5000-1105000/05	柴油滤清器总成	Fuel Filter Assembly		
21	F5000-1111000/09	喷油泵总成	Injection Pump Assembly		
22	F5000-1112000/03	喷油器总成	Injector Assembly		
23	F500H-1118000/01	增压器总成	Turbocharger Assembly		
24	231-1305000/06	放水开关	Water Drain Cock		
25	F50JA-1306000/08	调温器总成	Thermostat Assembly		
26	F50JA-1307000/04	水泵总成	Water Pump Assembly		
27	F30SA-1308000/06	风扇总成	Fan Assembly		
28	F50JM-1600000/02	动力输出总成	Power Output Assembly		
29	F300D-3407000/04	转向泵总成	Steering Pump Assembly		
30	F50FC-3509000/03	气制动空气压缩机总成	Pneumatic Air Compressor Assembly		
31	F50JM-3701000/01	发电机总成	Alternator Assembly		
32	F7200-3708000/04	起动机总成	Starter Assembly		
33	F50D1-3800000/01	仪表、感应器总成	Instrument& Sensor Assembly		
34	F50JM-3823000/01	控制系统总成	Control System Assembly		
35	F5000-3904000A/01	标牌总成	Dataplate Assembly		
36	F30SA-8104000/07	空调压缩机总成	Air Conditioner Compressor Assembly		
37	F30MA-1001000/01	发动机悬置总成	Engine Suspension Assembly		

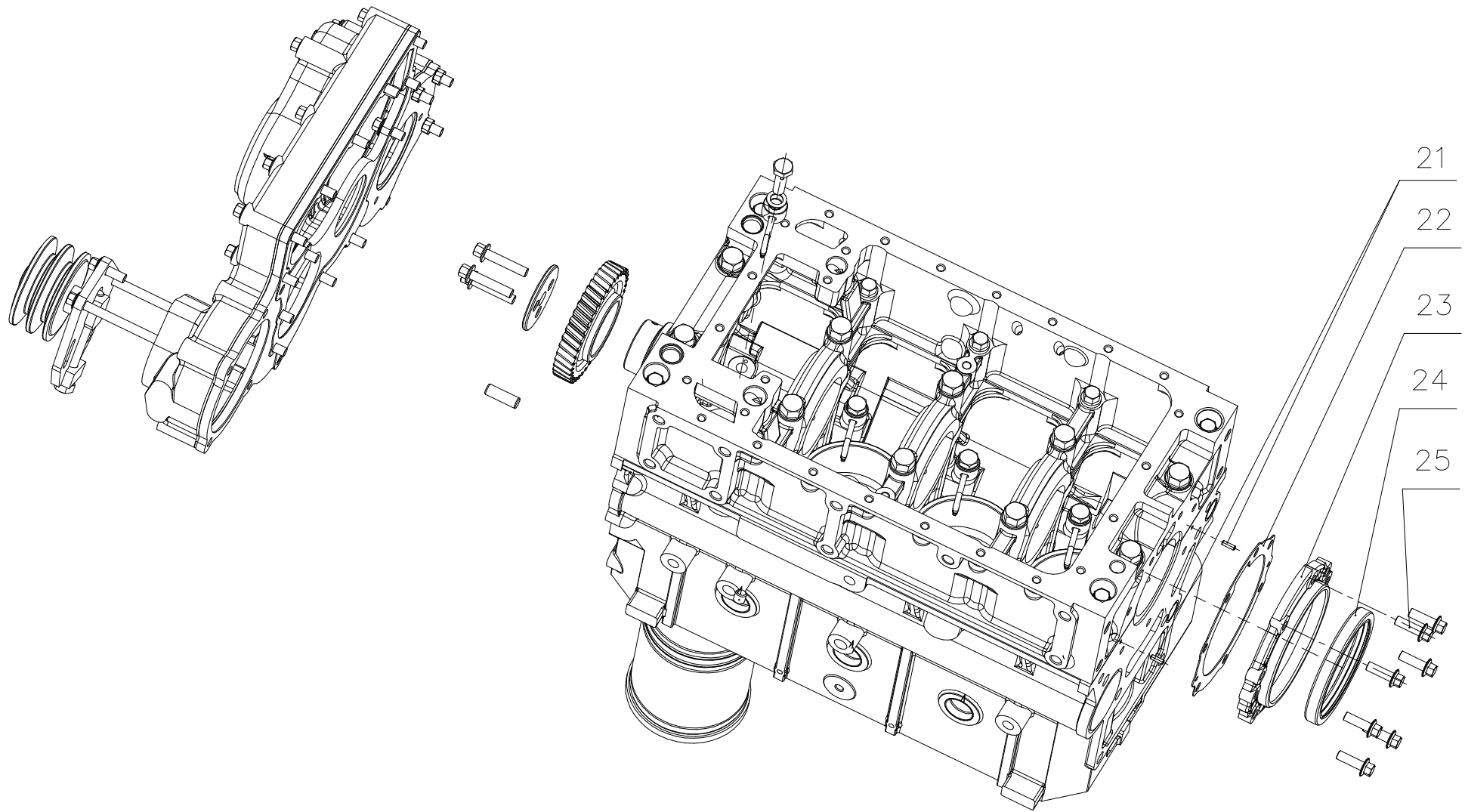
EWP=Easy Wear Part (易损件)

1 图 Drawing

F50JX-1002000/01 气缸体总成 (一) Cylinder Block Assembly



F50JX-1002000/01 气缸体总成 (二) Cylinder Block Assembly



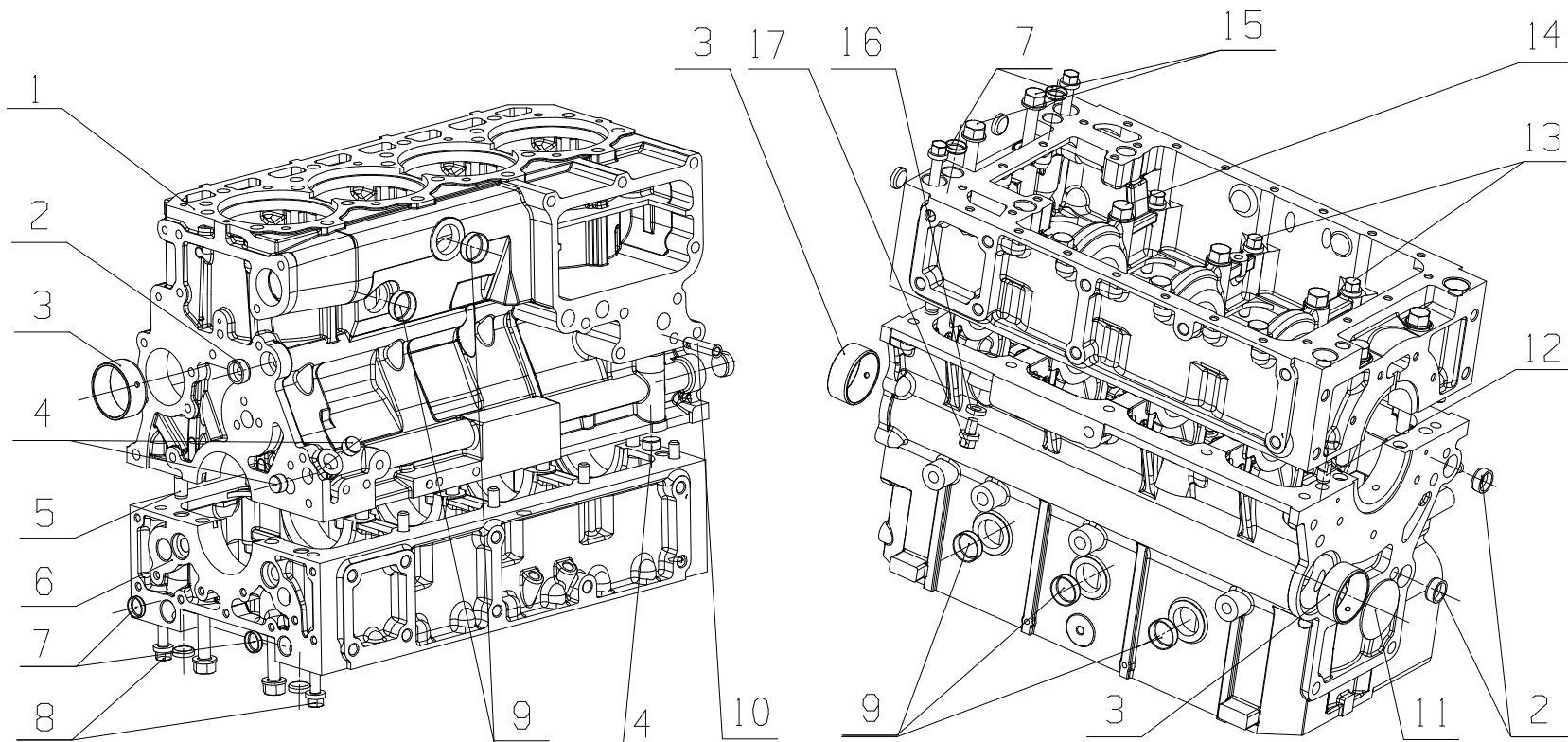
### 1. F50JX-1002000/01 气缸体总成 Cylinder Block Assembly

序号 Item	图 号 Part No.	名 称	Name	数量 Qty.	备 注 Remark
1	F5000-1002100	气缸体部件	Cylinder block parts	1	详见后页 Details see next page
2	F3000-1002107B	气缸套封水圈	Cylinder water seal ring	4	
3	F3000-1002107A	气缸套封水圈	Cylinder water seal ring	4	
4	F3000-1002106B	气缸套	Cylinder liner	4	易损件 EWP
5	F3000-1002306A	惰齿轮轴	Idle gear shaft	1	
6	F3000-1002360	惰齿轮组件	Idle gear subassembly	1	
7	F3000-1002307	惰齿轮挡板	Idle gear guard board	1	
8	Q/YC207-0840	螺栓	Bolt	3	
9	F50JX-1002200	齿轮室部件	Gear housing	1	详见后页 Details see next page
10	Q1840890TF2	螺栓 M8X90	Bolt M8X90	2	
11	186-1002056A	调节螺栓	Adjusting bolt	1	
12	Q40310	垫圈 10	Lock Washer 10	1	
13	F3100-1002450	张紧皮带轮组件	Tension belt pulley subassembly	1	
14	F3100-1002441	支架	Bracket	1	
15	Q1840825TF2	螺栓 M8X25	Bolt M8X25	1	
16	YC24-B0308	圆柱销 B3X8	Straight pin B3X8	4	
17	F3000-1002740A	喷嘴组件	Nozzle subassembly	4	
18	430-1002163	垫圈	Washer	4	
19	430-1002162B	过油螺栓	Hollow bolt for oil	4	
20	6105Q-1002022	铝堵 $\phi$ 10X10	Aluminum plug $\phi$ 10X10	3	
21	YC24-0412	圆柱销 4X12	Straight pin 4X12	2	
22	F3000-1002503	后油封座垫片	Rear oil seal seat gasket	1	易损件 EWP
23	F3000-1002501	曲轴后油封座	Crankshaft rear oil seal seat	1	
24	YC209-090110FL	油封 90 $\times$ 110	Oil seal 90 $\times$ 110	1	易损件 EWP
	YC209-C090110PL	油封 90 $\times$ 110	Oil seal 90 $\times$ 110	1	选装 Optional
25	Q1840825	螺栓 M8X25	Bolt M8X25	7	

EWP=Easy Wear Part (易损件)

2图 Drawing

F5000-1002100/04 气缸体部件 Cylinder Block Parts





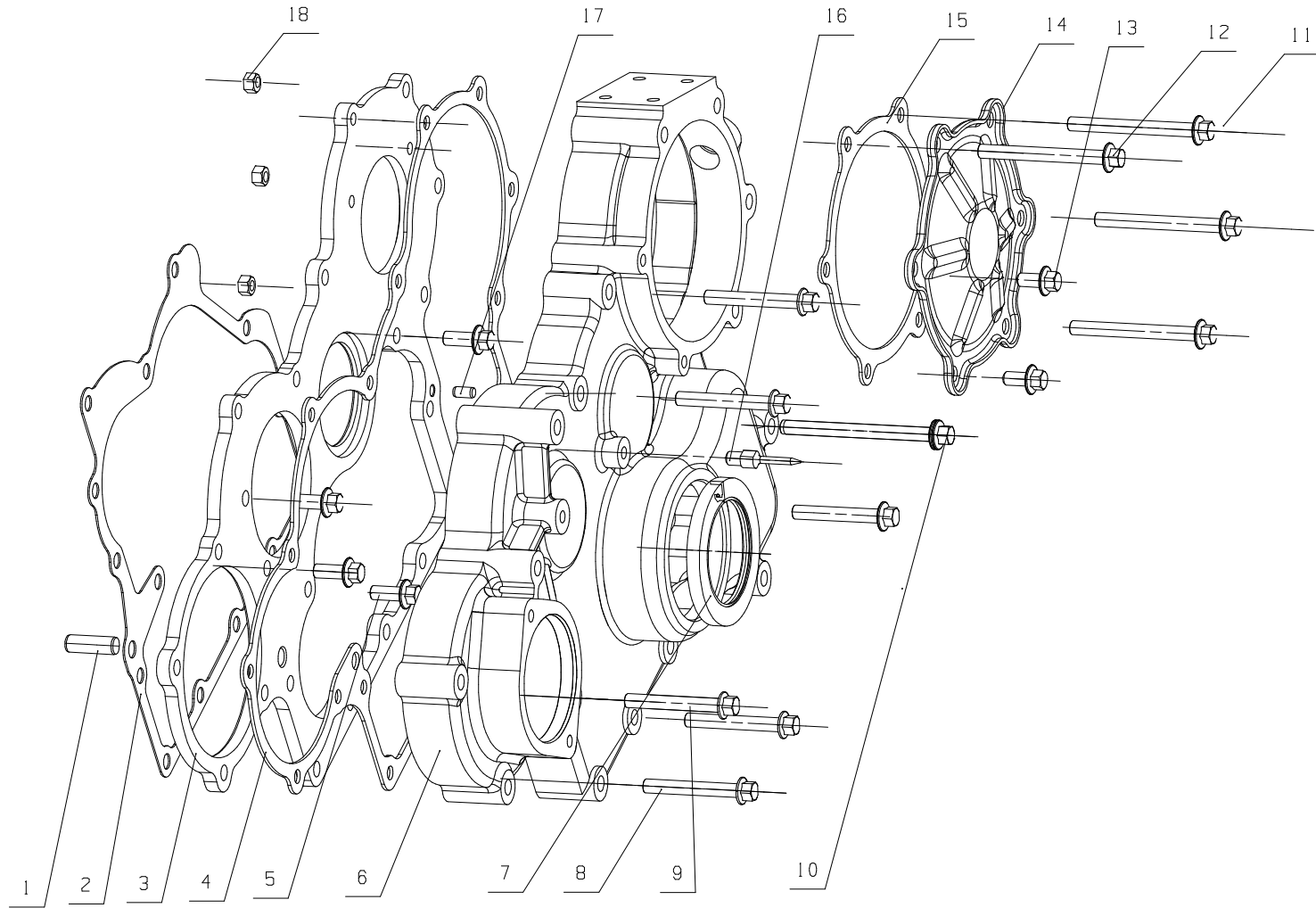
## 2. F5000-1002100/04 气缸体部件 Cylinder Block Parts

序号 Item	图 号 Part No.	名 称	Name	数量 Qty.	备 注 Remark
1	F3000-1002114D	气缸体	Cylinder block	1	
	F3000-1002114D*	气缸体组件	Cylinder block subassembly	1	包 含 (including) 1、 3、5、6、8、9、 12、13、14、15
2	6105Q-1002069	后主油道堵塞	Rear main oil galley plug	3	
3	F3000-1002120	凸轮轴衬套	Camshaft sleeve	5	
4	F3000-1002110	主油道密封塞	Main oil gallery seal plug	3	
5	YC24-1218	圆柱销 12X18	Straight pin 12X18	1	
6	F3000-1002123C	曲轴箱	Crankshaft tank	1	
7	Q72220	碗形塞片 20	Bowl-type spacer 20	4	
8	F3000-1002127B	主轴承盖长副螺栓	Main bearing cap long bolt	4	
9	Q72228	碗形塞片 28	Bowl-type plug 28	5	
10	F3000-1012001	泄油导管	Oil drain guide pipe	1	
11	Q72158	塞片 58	Spacer 58	1	
12	F3000-1002162A	定位菱销	Positioning pin	1	
13	F3000-1002126A	主轴承盖短副螺栓	Main bearing cap short bolt	6	
14	F3000-1002118A	主轴承盖螺栓	Main shaft cap bolt	6	
15	F3000-1003002A	气缸盖长螺栓	Cylinder head long bolt	4	
16	Q/YC901-3C14	垫圈 14	Washer 14	1	
17	A7100-14991-0	堵塞	Shim	1	

EWP=Easy Wear Part (易损件)

3 图 Drawing

F50JX-1002200/02 齿轮室部件 Gear Housing Parts



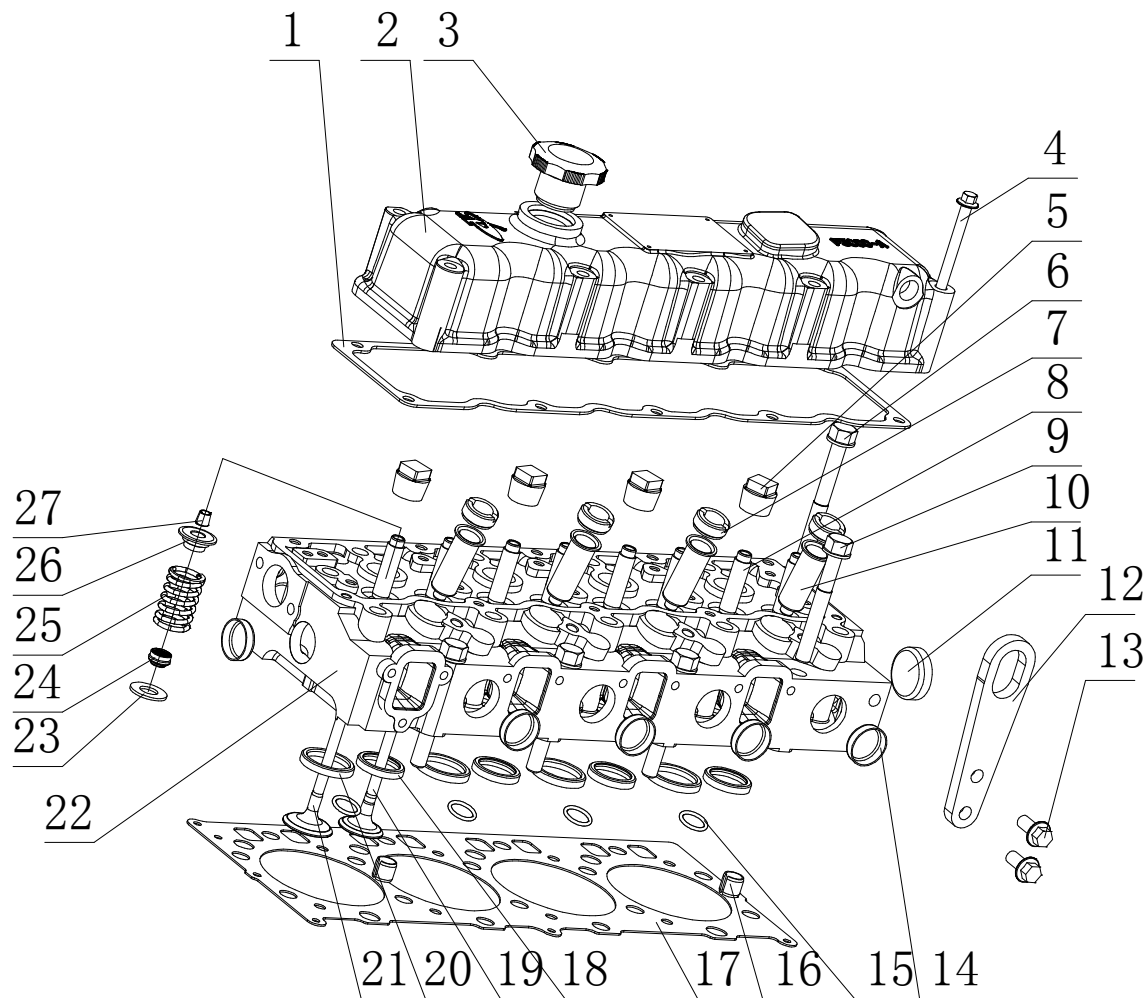
### 3. F50JX-1002200/02 齿轮室体部件 Gear Housing Parts

序号 Item	图 号 Part No.	名 称	Name	数量 Qty.	备 注 Remark
1	F3100-1002127	扁销	Flat pin	1	
2	F3100-1002202	齿轮室盖板垫片	Gear housing cap plate	1	易损件 EWP
3	F5000-1002203A	齿轮室盖板	Gear chamber cover plate	1	
4	F3100-1002204	齿轮室盖垫片	Gear box cover spacer	1	易损件 EWP
5	Q1840820TF2	螺栓 M8×20	Bolt M8×20	4	
6	F5000-1002201B	齿轮室	Gear house	1	
7	YC209-055080FR	油封 55×80	Oil seal 55×80	1	
	YC209-C055080PR	油封 55X80	Oil seal 55X80	1	选装 Optional
8	Q1840855	螺栓 M8×55	Bolt M8×55	7	
9	Q1840860	螺栓 M8×60	Bolt M8×60	1	
10	Q1840895	螺栓 M8×95	Bolt M8×95	2	
11	Q1840880	螺栓 M8X80	Bolt M8X80	3	
12	Q1840870	螺栓 M8X70	Bolt M8X70	1	
13	Q1840816	螺栓 M8X16	Bolt M8X16	2	
14	F5000-1002205	喷油泵齿轮盖	Injection pump gear cover	1	
15	F3100-1002206	喷油泵齿轮盖垫片	Injection pump gear cover gasket	1	易损件 EWP
16	F3000-1002207A	上止点指针	TDC pointer	1	
17	YC24-0616	圆柱销 6X16	Straight pin 6X16	1	
18	Q32008	螺母 M8	Nut M8	3	

EWP=Easy Wear Part (易损件)

4 图 Drawing

F5001-1003000/01 气缸盖及气缸盖罩总成 Cylinder Head & Cylinder Head Cover Assembly



#### 4、F5001-1003000/01 气缸盖及气缸盖罩总成 Cylinder Head& Cylinder Head Cover Assembly

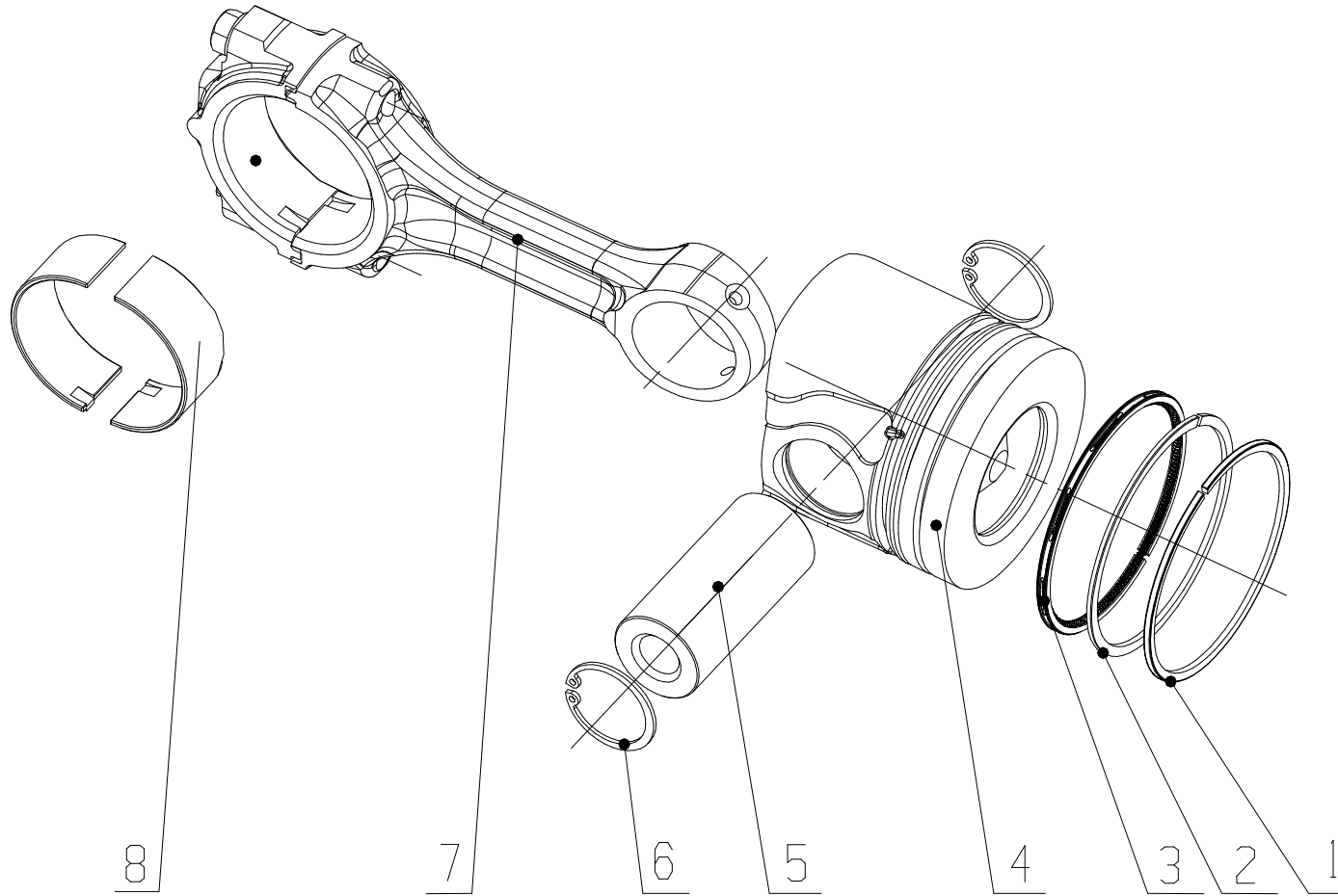
序号 Item	图号 Part No.	名称	Name	数量 Qty.	备注 Remark
1	F3000-1003201B	气缸盖罩垫片	Cylinder head cover spacer	1	易损件 EWP
2	F3000-1003241C	气缸盖罩	Cylinder head cover	1	
3	150-1003040F	加机油口盖组件	Oil filler cover subassembly	1	
4	Q1840880	螺栓 M8X80	Bolt M8X80	10	
5	Q614B06	螺塞 NPT 3/4	Screw plug	4	
6	F3000-1003002A	气缸盖长螺栓	Cylinder head long bolt	14	
7	F3000-1003171	螺套	Bolt sleeve	4	
8	F3000-1003172	气门导管	Valve guide pipe	8	
9	F3000-1003003A	气缸盖短螺栓	Cylinder head short bolt	4	
10	F3000-1003119	喷油器镶套	Injector bush fitting	4	
11	Q72240	碗型塞片 40	Bowl type plug	1	
12	F3000-1003151B	后吊耳	Rear lifter	1	
13	Q1841025TF2	螺栓 M10X25	Bolt M10X25	2	
14	Q72232	碗形塞片 32	Bowl-type plug	6	
15	YC208-B01800S	O 形密封圈 18X2.65	O-ring	4	
16	F3100-1003114A	气缸盖定位销套	Cylinder head dowel pin sleeve	2	
17	F3000-1003001A	气缸盖垫片	Cylinder head gasket	1	易损件 EWP
	F3000-1003001A-264	气缸盖垫片	Cylinder head gasket	1	选装 Optional
	F3000-1003001A-B28	气缸盖垫片	Cylinder head gasket	1	选装 Optional
18	F3000-1003102A	排气门座圈	Exhaust valve seat ring	4	
19	F3000-1003103B	排气门	Exhaust valve	4	
20	F3000-1003112	进气门座圈	Intake valve seat ring	4	
21	F3000-1003111A	进气门	Intake valve	4	
22	F5000-1003101	气缸盖	Cylinder head	1	
	F5000-1003170	气缸盖组件	Cylinder head subassembly	1	
23	F3000-1003121	旋转垫片	Rotary spacer	8	
24	L3000-1003105	气门杆油封	Valve stem seal	8	
25	F3000-1003106S	气门弹簧	Valve spring	8	
26	F3000-1003116	气门弹簧上座	Valve spring upper seat	8	

27	F3000-1003109	气门锁夹	Valve stem locks	16	
----	---------------	------	------------------	----	--

EWP=Easy Wear Part (易损件)

5 图 Drawing

F5000-1004000/03 活塞及连杆总成 Piston & Connecting Rod Assembly



**5. F5000-1004000/03 活塞及连杆总成 Piston& Connecting Rod Assembly**

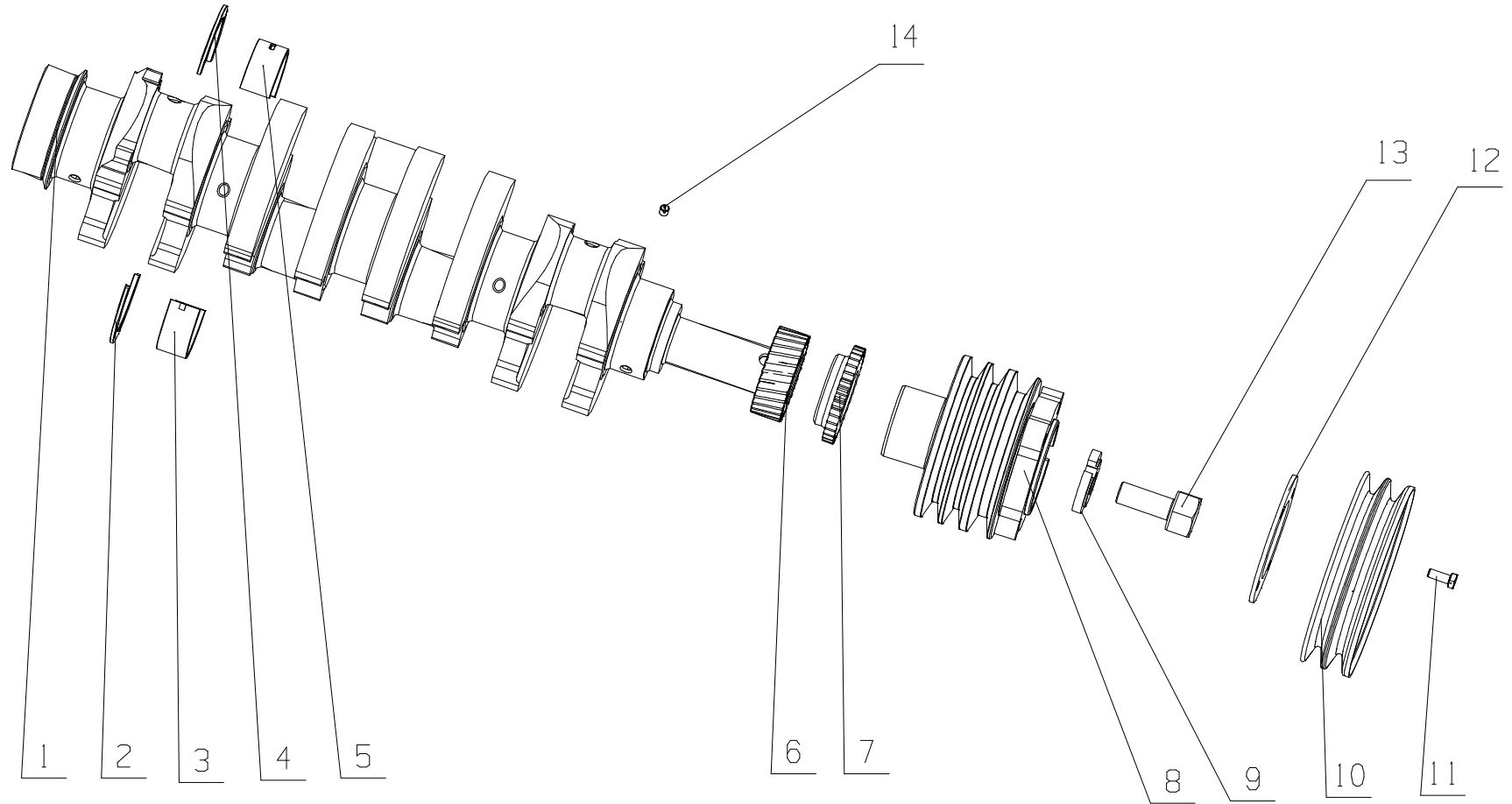
序号 Item	图 号 Part No.	名 称	Name	数量 Qty.	备 注 Remark
1	F3000-1004002A	气环	Gas ring	4	易损件 EWP
2	F3000-1004003A	刮油环	Fuel Scrap ring	4	易损件 EWP
3	F3000-1004100A	油环部件	Fuel ring parts	4	易损件 EWP
	F3000-1004002A*	活塞环总成	Piston ring assembly	4	
4	F3000-1004001A	活塞	Piston	4	易损件 EWP
5	F3000-1004004B	活塞销	Piston pin	4	
6	Q43034	挡圈 34	Retainer 34	8	
7	F3000-1004200C	连杆部件	Connecting rod part	4	
8	F7000-1004005	连杆轴瓦	Connecting rod shaft shell	8	易损件 EWP

EWP=Easy Wear Part (易损件)



6图 Drawing

F30SA-1005000/06 曲轴减振器总成 Crankshaft Vibration Damper Assembly



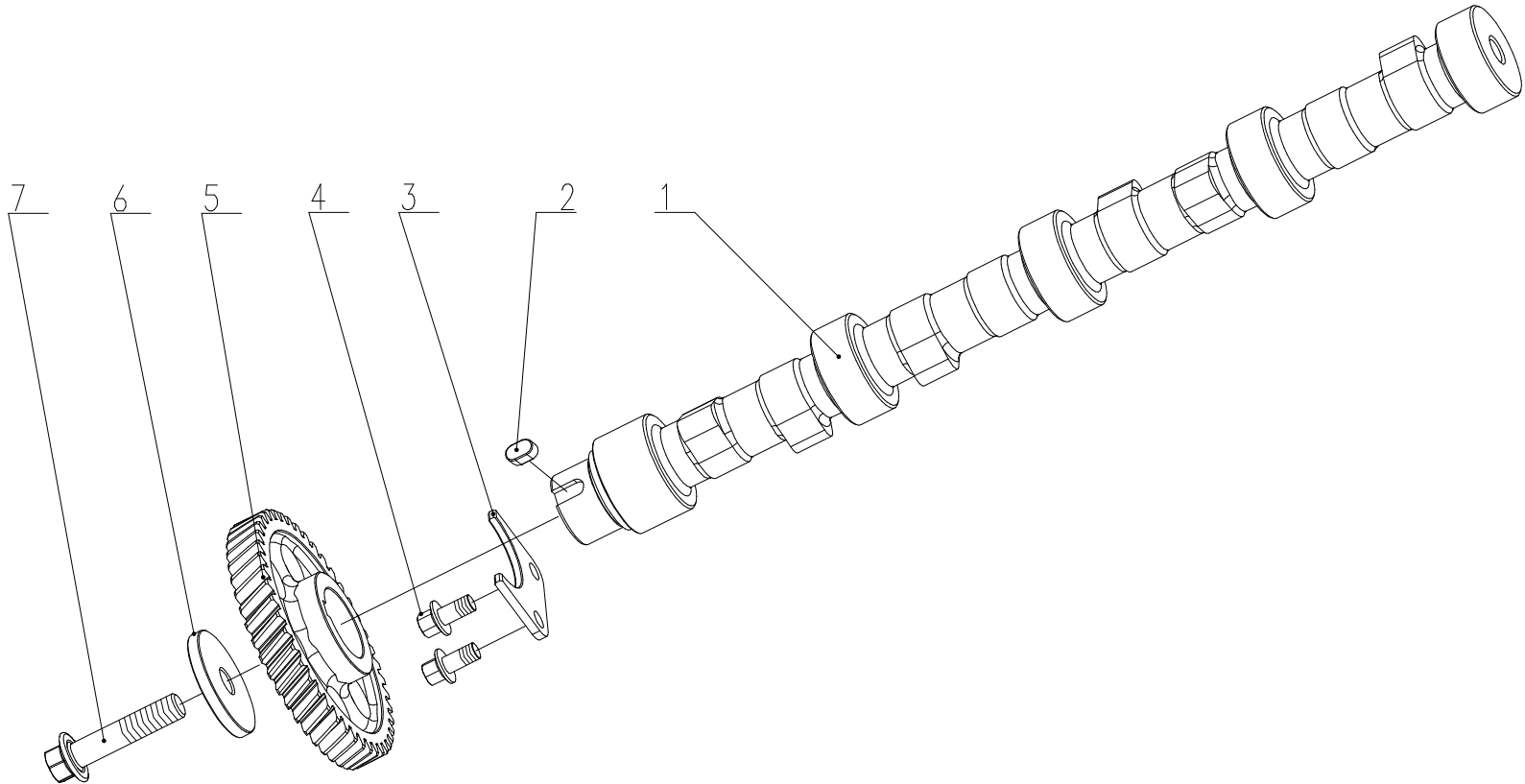
**6. F30SA-1005000/06 曲轴减振器总成 Crankshaft Vibration Damper Assembly**

序号 Item	图 号 Part No.	名 称	Name	数量 Qty.	备 注 Remark
1	F3000-1005001B	曲轴	Camshaft	1	
2	F7000-1005008	下止推片	Lower thrust plate	2	易损件 EWP
3	F7000-1005006	下主轴瓦	Lower main bearing	5	易损件 EWP
4	F7000-1005007	上止推片	Upper thrust plate	2	易损件 EWP
	F7000-1005007*	止推片组件	Thrusting plate subassembly	1	
5	F7000-1005005A	上主轴瓦	Upper main bearing	5	易损件 EWP
	F7000-1005005A*	主轴瓦组件	Main bearing shell subassembly	1	
6	F3000-1005002A	曲轴正时齿轮	Chrankshaft timing gear	1	
7	F3000-1005066A	机油泵驱动齿轮	Oil pump drive gear	1	
8	F3000-1005140C	减振器组件	Vibration damper	1	
9	F3000-1005012A	皮带轮螺栓垫片	Pulley bolt gasket	1	
10	F30FD-1005016	附加皮带轮	Attached pulley	1	
11	Q1840820TF2	螺栓 M8X20	Blot M8X20	4	
12	F30FD-1005155	附加皮带轮垫块	Auxiliary belt pulley cushion block	1	
13	F3000-1005014B	曲轴皮带轮螺栓	Crankshaft pulley bolt	1	
14	Q2820808T10F9	螺钉 M8X8	Screw M8X8	4	

EWP=Easy Wear Part (易损件)

7图 Drawing

F3700-1006000/05 凸轮轴总成 Camshaft Assembly



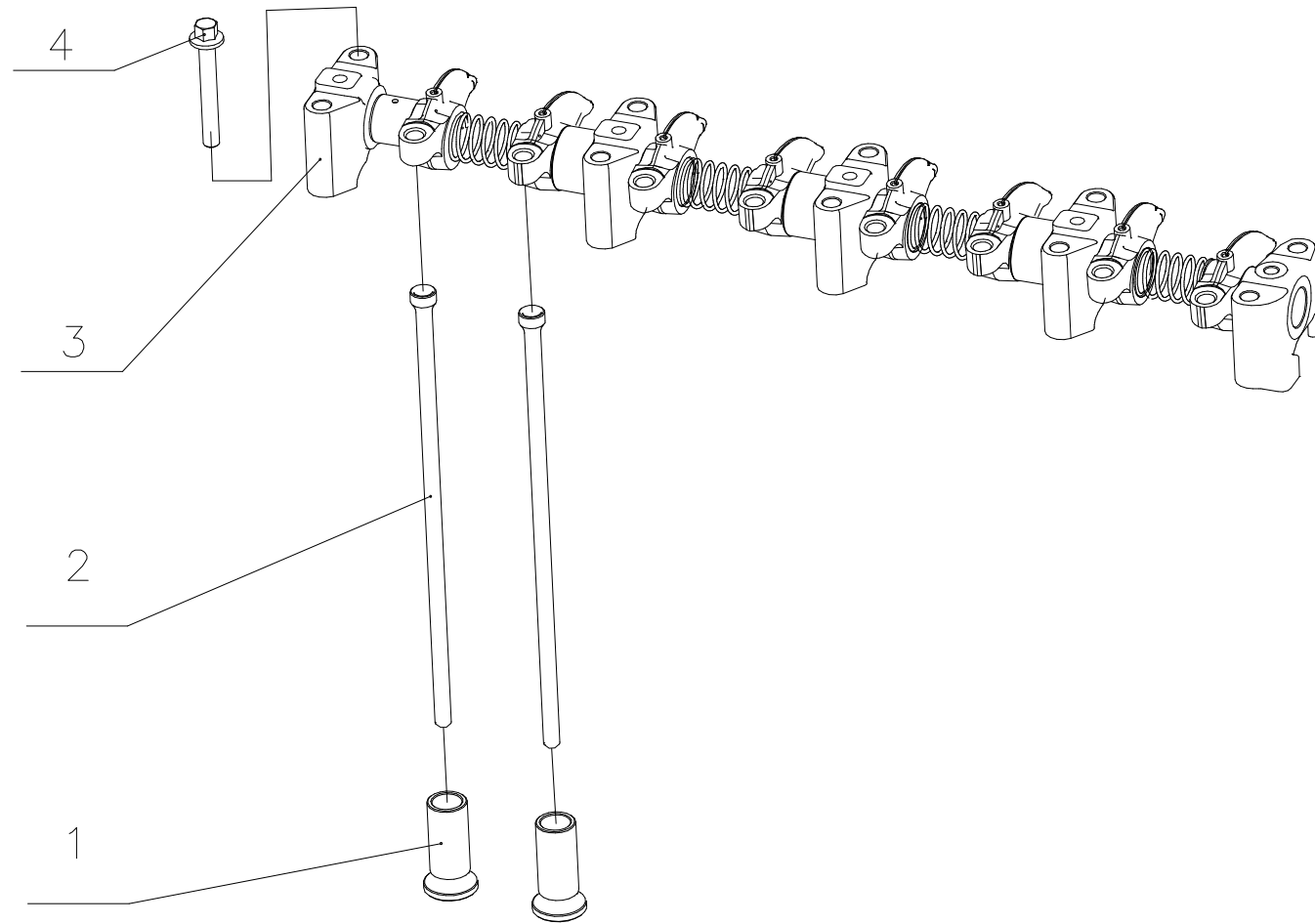
**7. F3700-1006000/05 凸轮轴总成** Camshaft Assembly

序号 Item	图 号 Part No.	名 称	Name	数量 Qty.	备 注 Remark
1	F3000-1006001B	凸轮轴	Camshaft	1	
2	Q5510814	键 8X14	Key 8X14	1	
3	F3000-1006003	凸轮轴止推片	Camshaft thrust plate	1	
4	Q/YC207-0816	螺栓 M8X16	Bolt M8X16	2	
5	F3000-1006002B	凸轮轴正时齿轮	Camshaft timing gear	1	
6	F3000-1006006	垫圈	Washer	1	
7	F3000-1006007	凸轮轴螺栓	Camshaft bolt	1	

EWP=Easy Wear Part (易损件)

8图 Drawing

F3000-1007000/10 配气机构总成 Valve Train System Assembly



### 8. F3000-1007000/10 配气机构总成 Valve Train System Assembly

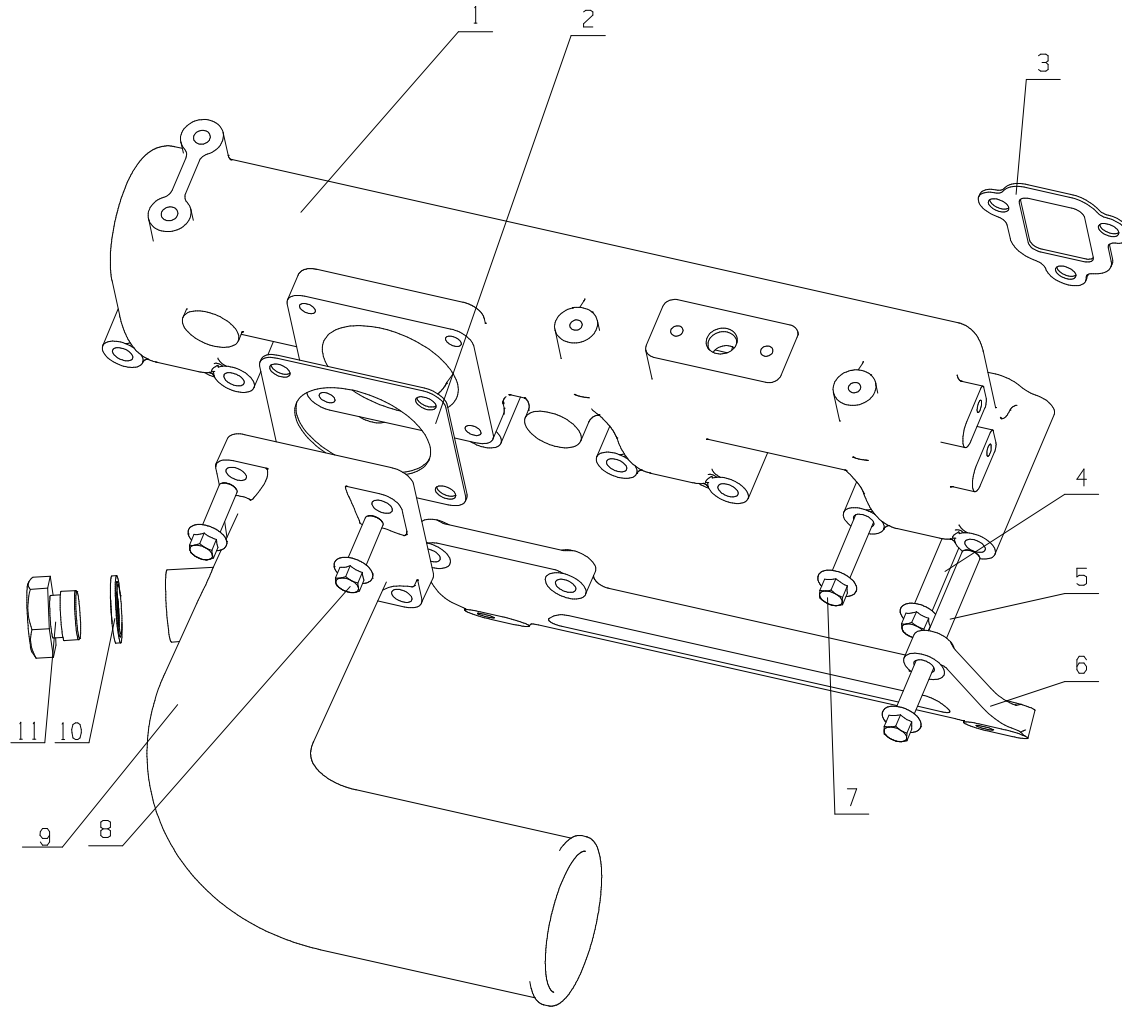
序号 Item	图 号 Part No.	名 称	Name	数量 Qty.	备 注 Remark
1	F3000-1007001A	挺柱	Tappet	8	
2	F3000-1007002SF2	推杆	Push rod	8	
3	F3000-1007100SF2	摇臂轴部件	Rocker arm shaft part	1	
4	Q/YC207-0860	螺栓	Bolt	10	

EWP=Easy Wear Part (易损件)

9 图 Drawing

F50JA-1008100/05&F31NA-1008500/02 进气管部件&进气接管部件

Intake Pipe Parts& Intake Connecting Pipe Parts



**9. F50JA -1008100/05&F31NA-1008500/02 进气管部件&进气接管部件**

**Intake Pipe Parts& Intake Connecting Pipe Parts**

序号 Item	图 号 Part No.	名 称	Name	数量 Qty.	备 注 Remark
1	F5000-1008101D	进气管	Air intake manifold	1	
2	F3000-1008105A	进气接管垫片	Air intake pipe spacer	1	易损件 EWP
3	F3000-1008104A	进气管垫片	Air intake manifold spacer	4	易损件 EWP
4	Q1840855	螺栓 M8X55	Bolt M8x55	4	
5	Q1840895	螺栓 M8X95	Bolt M8X95	3	
6	F5000-1111201	支架	Bracket	1	
7	Q1840885	螺栓 M8X85	Bolt M8X85	5	
8	Q1840825	螺栓 M8X25	Bolt M8x25	4	
9	F7000-1008102A	进气接管	Air intake pipe	1	
10	Q/YC149-20	复合式密封垫圈 20	Seal ring 20	2	
11	Q/YC198-20	螺塞 M20X1.5	Screw plug M20X1.5	2	

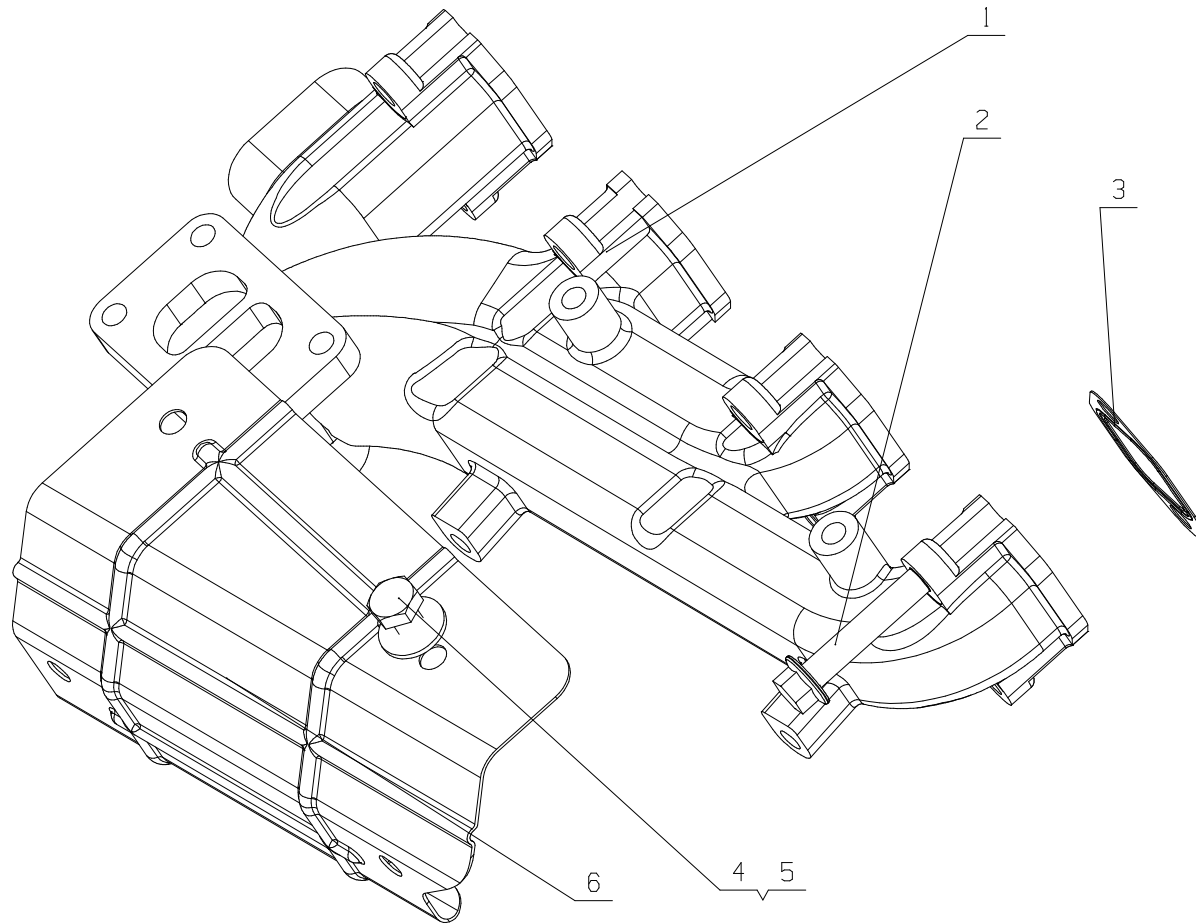
EWP=Easy Wear Part (易损件)



10 图 Drawing

F30SA-1008200/07 排气管部件& F30SA-1008400/01 排气管护罩部件

Exhaust Manifold& Exhaust Manifold Cover Parts



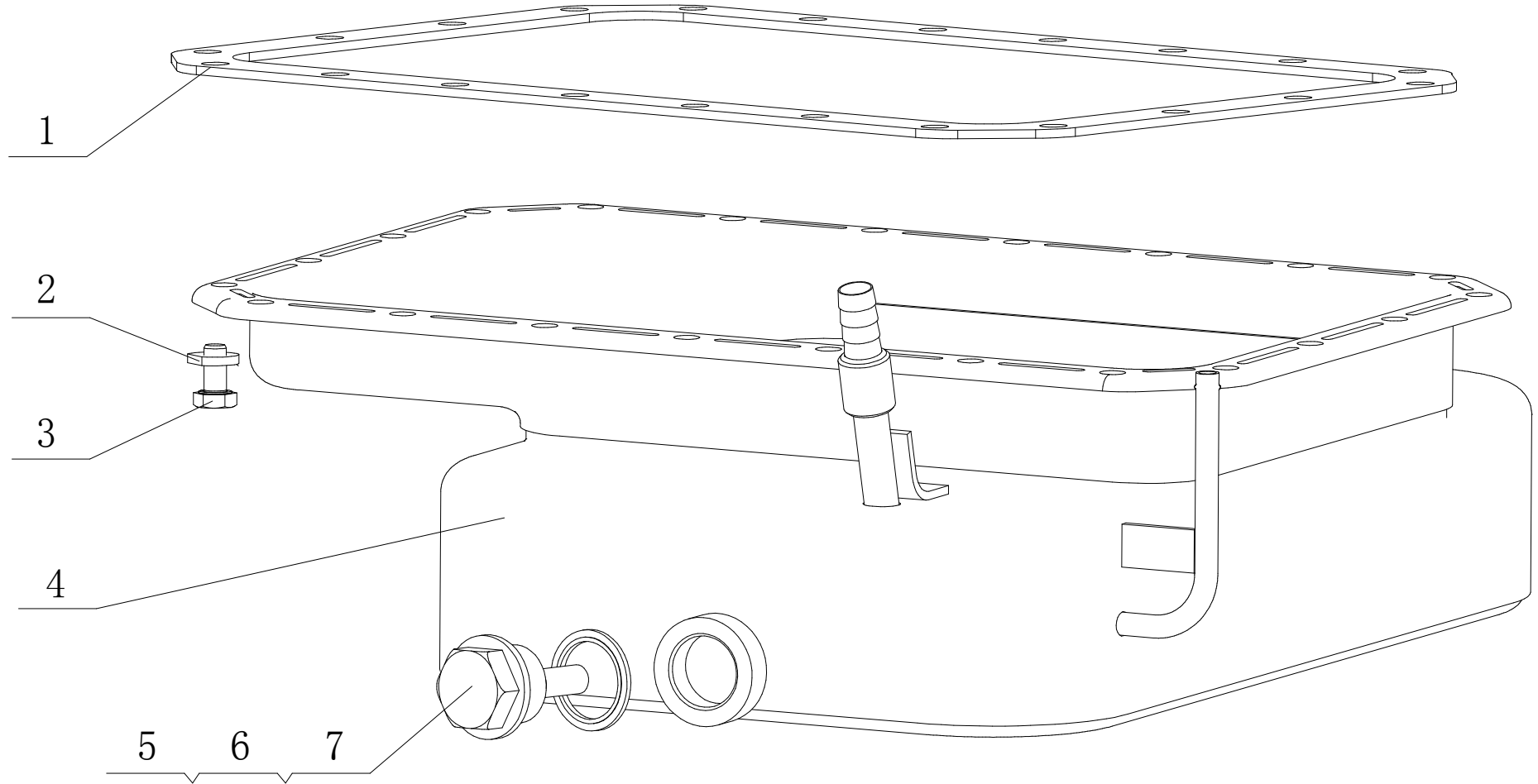
**11. F30SA-1008200/07 排气管部件& F30SA-1008400/01 排气管护罩部件 Exhaust Manifold& Exhaust Manifold Cover Parts**

序号 Item	图 号 Part No.	名 称	Name	数量 Qty.	备 注 Remark
1	F30SA-1008204A	排气管	Exhaust manifold	1	
2	Q1841050TF2	螺栓 M10X50	Bolt M10X50	8	
3	F3100-1008205	排气管垫片	Exhaust manifold gasket	4	易损件 EWP
4	Q150B0816	螺栓 M8X16	Bolt M8X16	4	
5	Q40208	垫圈 8	Lock Washer 8	4	
6	F30SA-1008211A	排气管罩	Exhaust pipe cap	1	

EWP=Easy Wear Part (易损件)

11 图 Drawing

F30JA-1009000/01 油底壳总成 Oil Sump Assembly



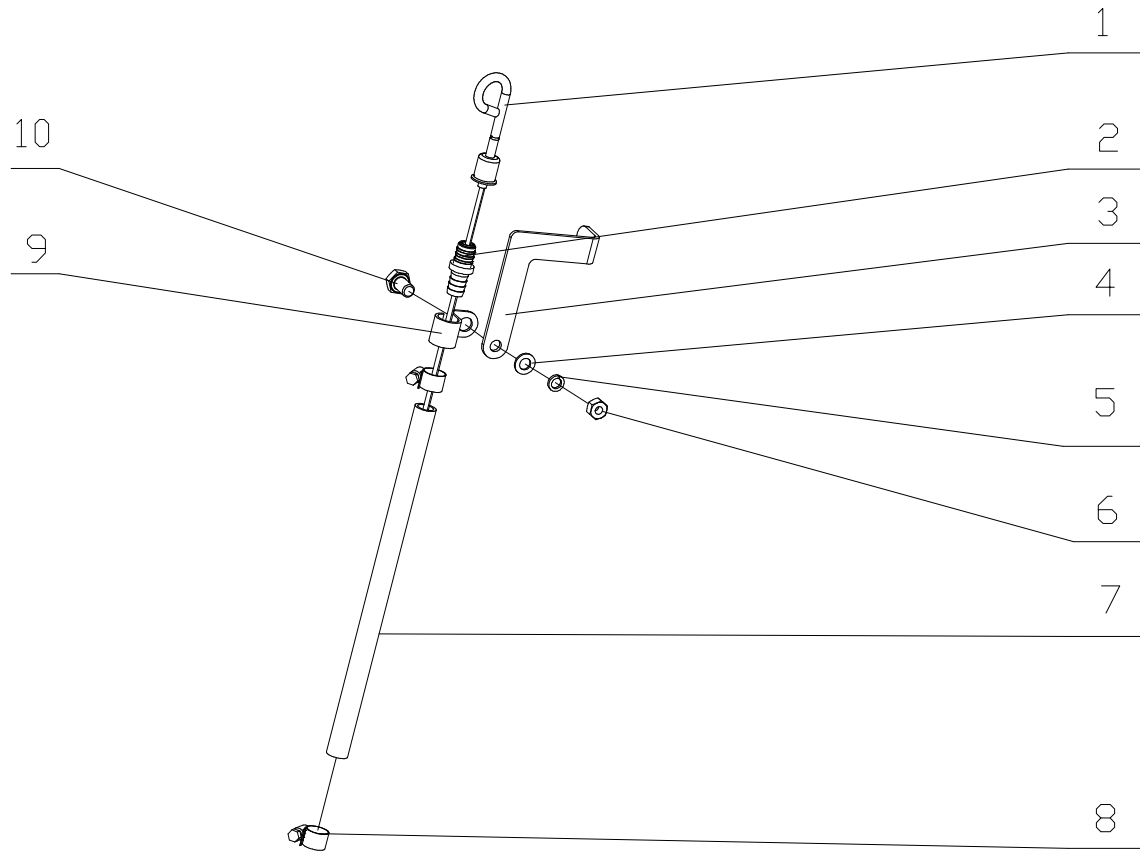
**11. F30JA-1009000/01 油底壳总成 Oil Sump Assembly**

序号 Item	图 号 Part No.	名 称	Name	数量 Qty.	备 注 Remark
1	F3000-1009001	油底壳垫片	Oil sump gasket	1	易损件 EWP
2	D30-1009102A	垫圈	Washer	22	
3	Q150B0816TF2	螺栓 M8X16	Bolt M8X16	22	
4	F30JA-1009040A	油底壳组件	Oil sump assembly	1	
5	6105Q-1009031C	放油塞	Oil drain plug	1	
6	6105Q-1009032A	放油塞磁铁	Oil drain plug magnet	1	
7	Q/YC149-27	复合式密封垫圈 27	Seal washer 27	1	易损件 EWP

EWP=Easy Wear Part (易损件)

12 图 Drawing

F50JG-1028000/01 油标尺总成 Oil Dipstick Assembly



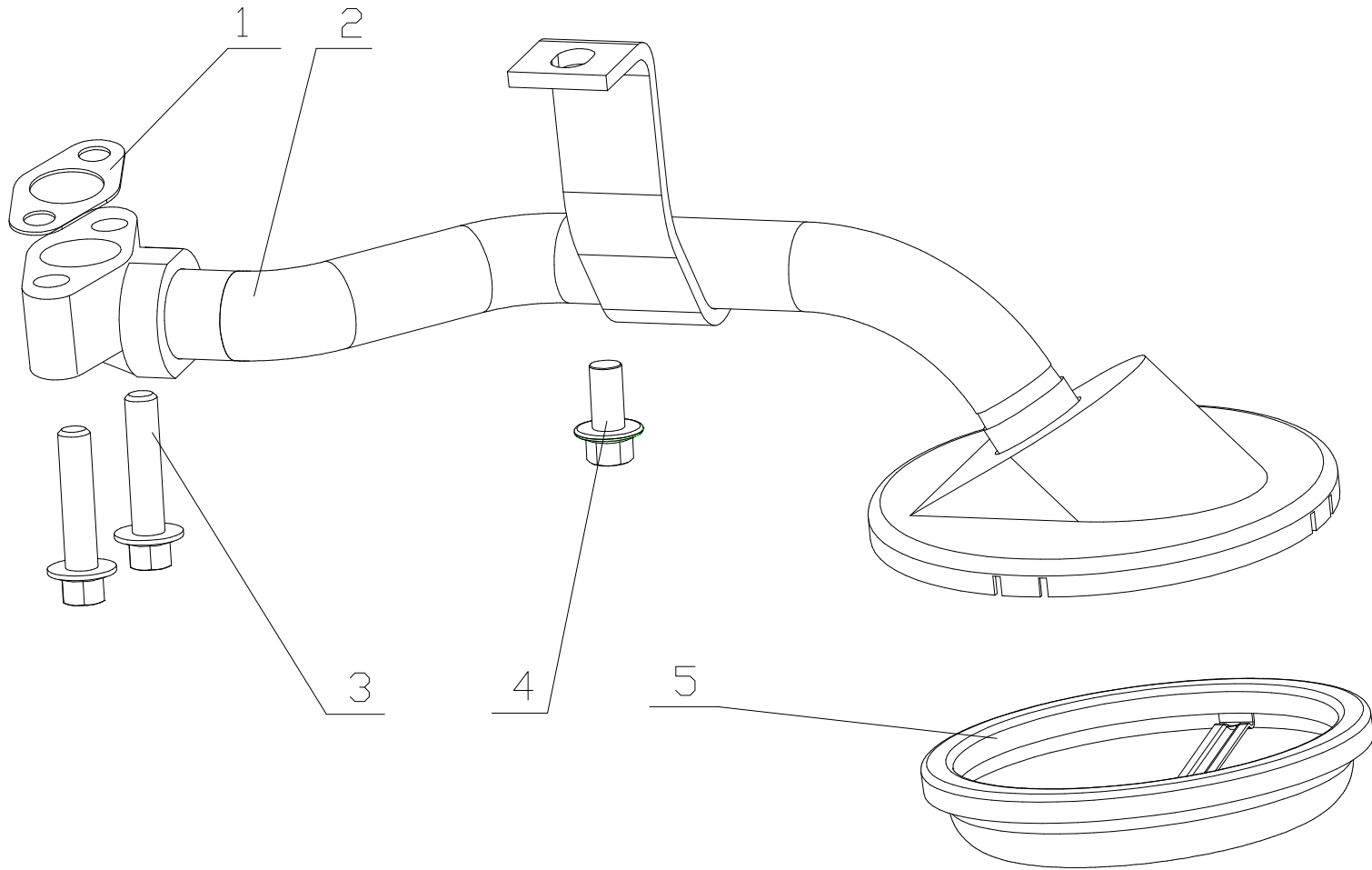
**12. F50JG-1028000/01 油标尺总成 Oil Dipstick Assembly**

序号 Item	图 号 Part No.	名 称	Name	数量 Qty.	备 注 Remark
1	M32B1-1009080A	油标尺焊接件	Oil dipstick weldment	1	
2	155-1009043B	油标尺座	Oil dipstick seat	1	
3	F30SA-1009009	油标尺支撑板	Oil dipstick support plate	1	
4	Q40108	垫圈 8	Lock Washer 8	2	
5	Q40308	垫圈 8	Lock Washer 8	2	
6	Q340B08	螺母 M8	Nut M8	1	
7	F30SA-1009047	油标尺套管	Oil dipstick sleeve	1	
8	Q67616	环箍 16	Loop hoop 16	2	
9	F30SA-1009008	油标尺管夹	Oil dipstick pipe clamp	1	
10	Q150B0816	螺栓 M8×16	Bolt	2	

EWP=Easy Wear Part (易损件)

13 图 Drawing

F3000-1010000A/05 机油集滤器总成 Oil Strainer Assembly



**13. F3000-1010000A/05 机油集滤器总成 Oil Strainer Assemblby**

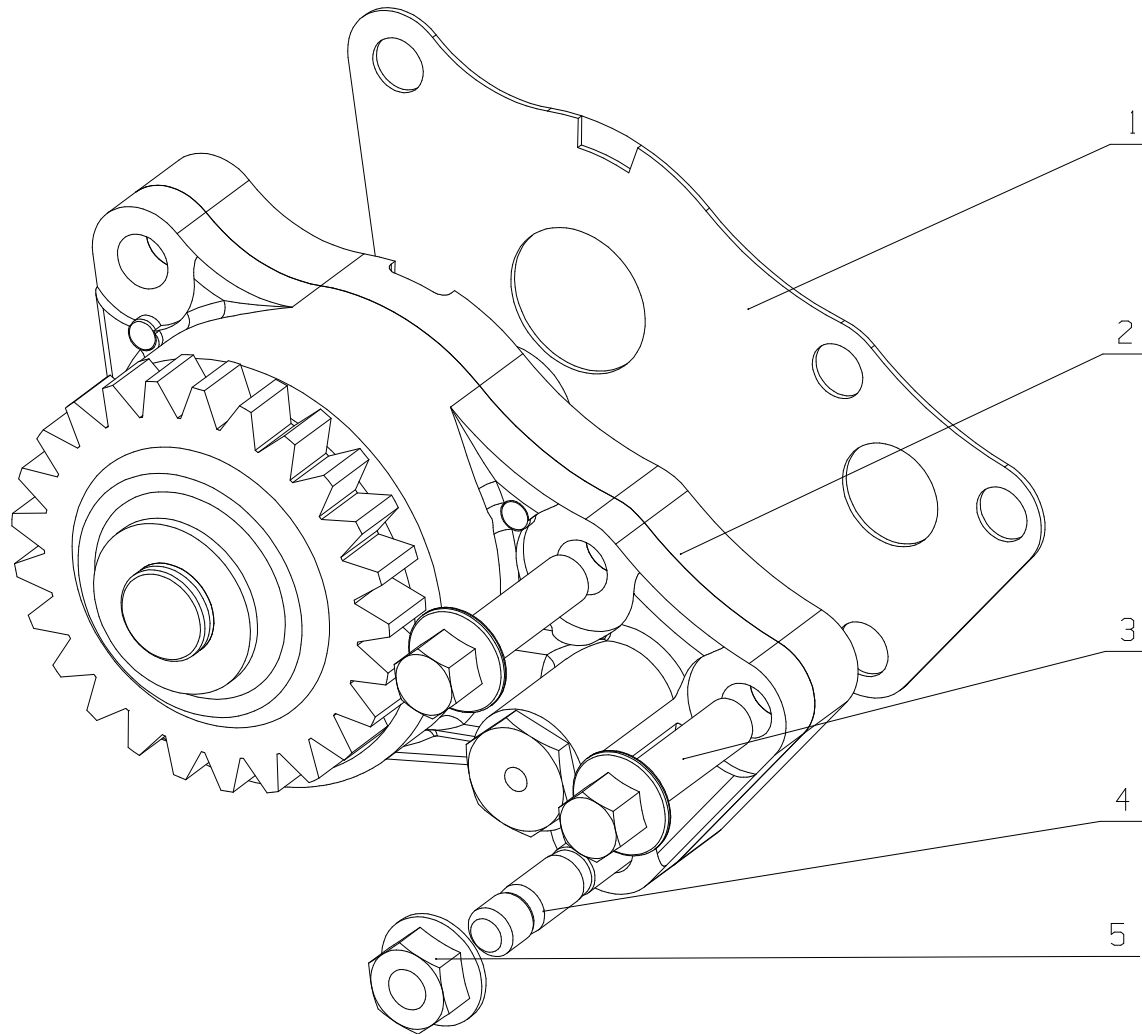
序号 Item	图 号 Part No.	名 称	Name	数量 Qty.	备 注 Remark
1	F3000-1010003C	集滤器垫片	Oil strainer spacer	1	易损件 EWP
2	F3000-1010100D	吸油管焊接件	Oil suction pipe weldment	1	
3	Q/YC207-0830	螺栓	Bolt	2	
4	Q/YC207-0816	螺栓	Bolt	1	
5	530-1010030	滤网组件	Filter screen subassembly	1	

EWP=Easy Wear Part (易损件)



14 图 Drawing

F3000-1011000/05 机油泵总成 Oil Pump Assembly



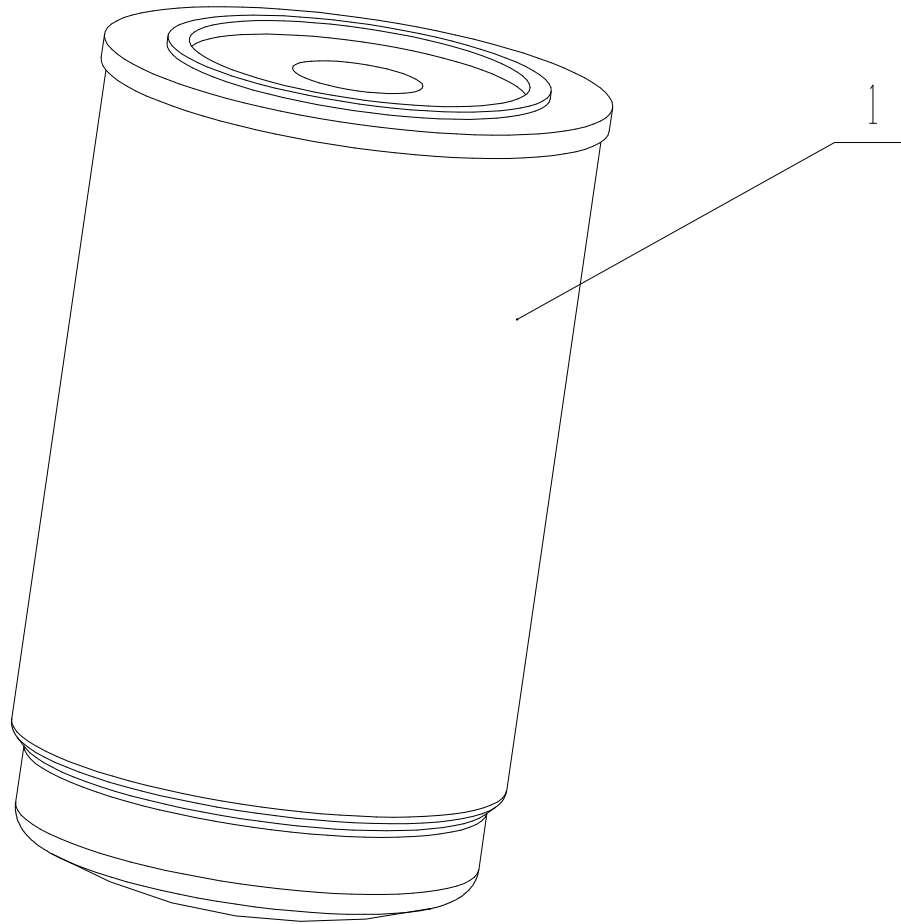
**14. F3000-1011000/05 机油泵总成 Oil Pump Assembly**

序号 Item	图 号 Part No.	名 称	Name	数量 Qty.	备 注 Remark
1	F3000-1011007	机油泵垫片	Oil pump washer	1	易损件 EWP
2	F3000-1011100	机油泵部件	Oil pump part	1	
3	Q/YC207-0830	螺栓	Bolt	4	
4	Q1200830TF2	螺柱 M8X30	Stud M8X30	1	
5	Q32008	螺母 M8	Nut M8	1	

EWP=Easy Wear Part (易损件)

15 图 Drawing

186-1012000/04 机油滤清器 Oil Filter



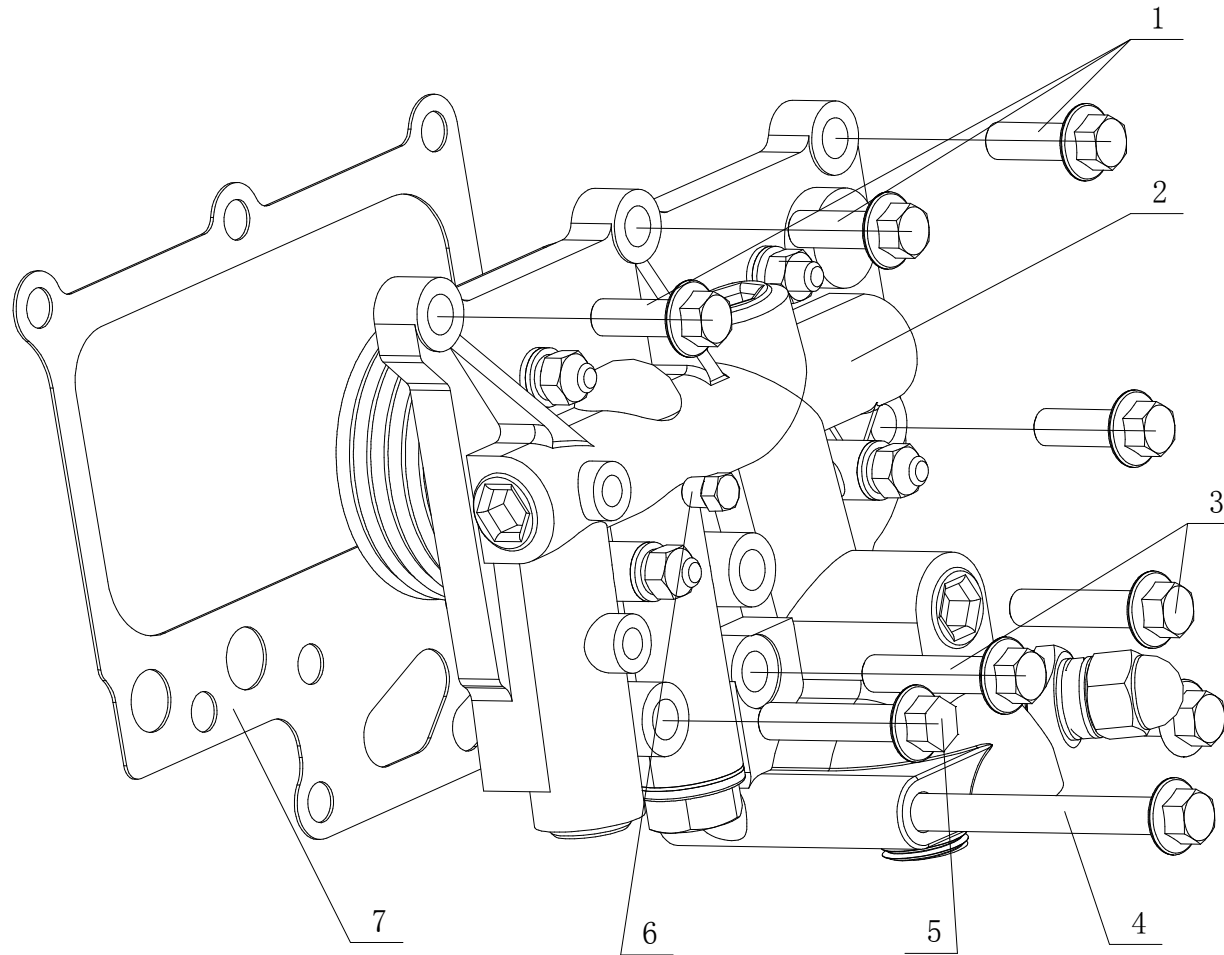
**15. 186-1012000/04 机油滤清器 Oil Filter**

序号 Item	图 号 Part No.	名 称	Name	数量 Qty.	备 注 Remark
1	186-1012000	机油滤清器	Oil filter	1	易损件 EWP

EWP=Easy Wear Part (易损件)

16 图 Drawing

F50J1-1013000/04 机油冷却器总成 Oil Cooler Assembly



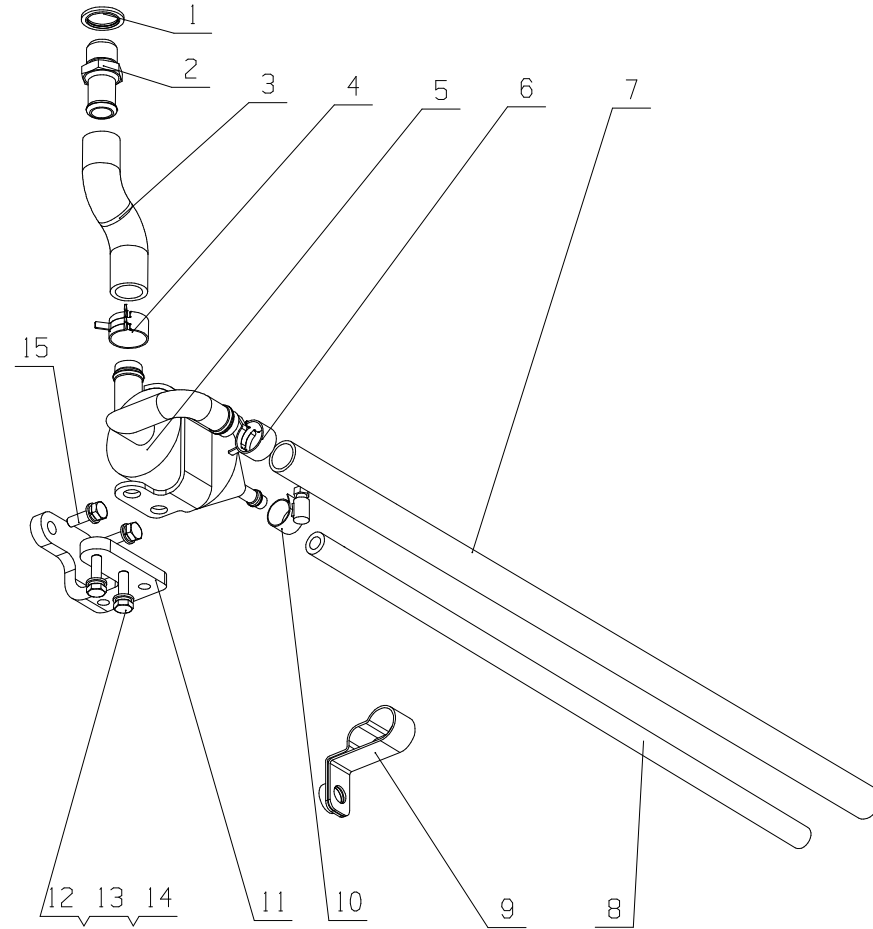
**16、F50J1-1013000/04 机油冷却器总成 Oil Cooler Assembly**

序号 Item	图 号 Part No.	名 称	Name	数量 Qty.	备 注 Remark
1	Q1841030	螺栓 M10X30	Bolt M10X30	5	
2	F3100-1013100D	机油冷却器	Oil cooler	1	
3	Q1841045	螺栓 M10X45	Bolt M10X45	2	
4	Q18410100	螺栓 M10X100	Bolt M10X100	1	
5	Q1841050	螺栓 M10X50	Bolt M10X50	2	装 F3400-1014005B 管夹时，替换一颗 Q1841045 螺栓
6	Q61901	螺塞 NPT 1/8	Screw plug NPT 1/8	1	
7	F6000-1013104	冷却器盖垫片	Oil cooler cover spacer	1	易损件 EWP

EWP=Easy Wear Part (易损件)

17 图 Drawing

F5201-1014000/05 呼吸器总成 Breather Assembly



### 17. F5201-1014000/05 呼吸器总成 Breather Assembly

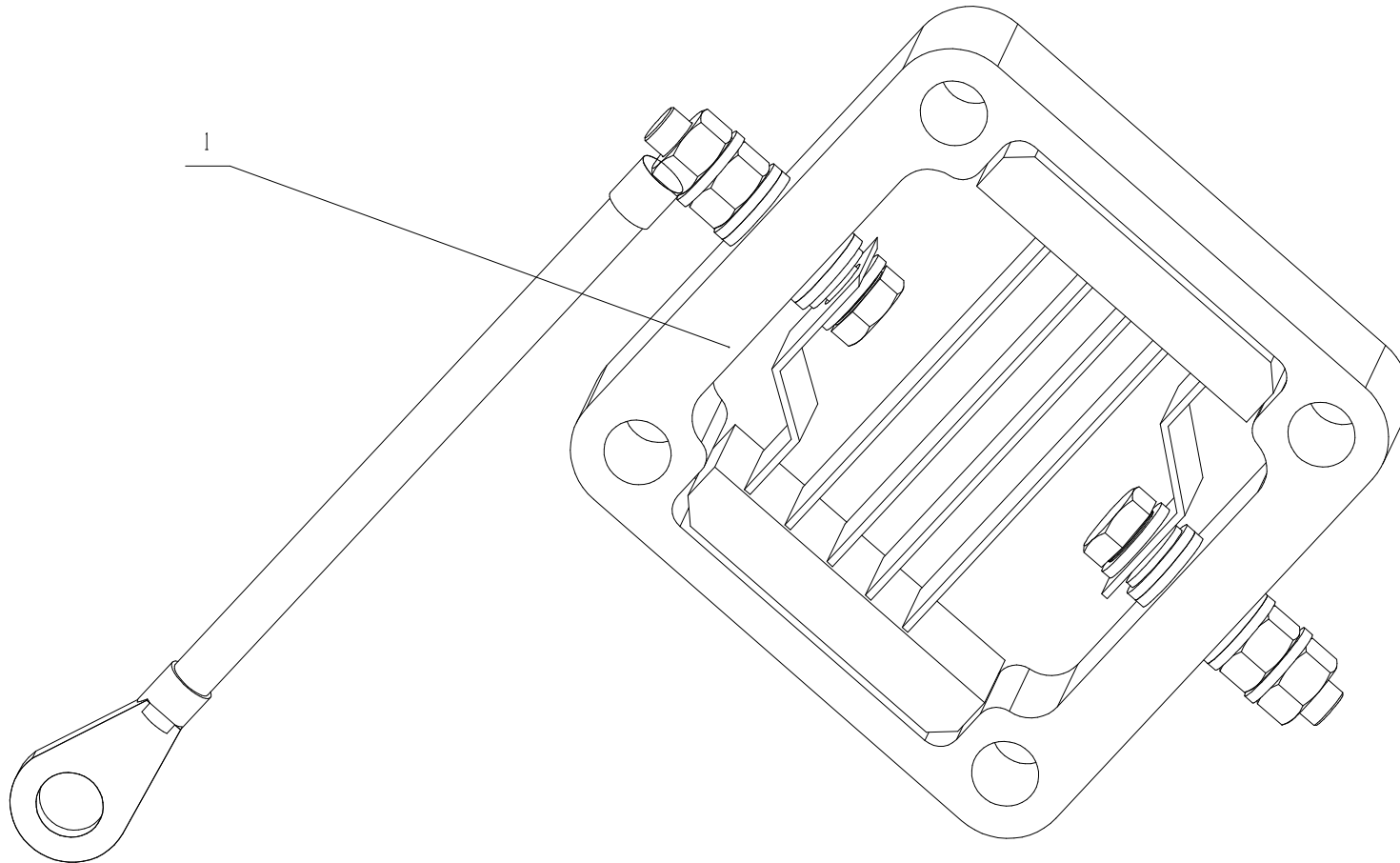
序号 Item	图 号 Part No.	名 称	Name	数量 Qty.	备 注 Remark
1	Q/YC149-18	复合式密封垫圈 18	Seal ring 18	1	
2	151-1306027	暖风供水接头	Heated water supply joint	1	
3	F3100-1014003B	通气软管	Venti-hose	1	
4	Q673B21	环箍 21	Ring hoop 21	2	
5	F3100-1014100A	离心式油气分离器	Centrifugal oil gas seperator	1	
6	Q673B19	环箍 19	Ring hoop 19	1	
7	F3000-1014045A	外通管	Outer hose	1	
8	F3100-1014053	呼吸器回油软管	Oil return hose of breather	1	
9	F3400-1014005B	管夹	Pipe clamp	1	
10	Q67616	环箍	Loop hoop 38	2	
11	F3100-1104542	分配器过渡板	Distributor transmission plate	1	
12	Q150B0616	螺栓 M6X16	Bolt M6X16	2	
13	Q40306	垫圈 6	Washer 6	4	
14	Q40106	垫圈 6	Washer 6	4	
15	Q150B0620	螺栓 M6X20	Bolt M6X20	2	

EWP=Easy Wear Part (易损件)



18 图 Drawing

F5000-1015000/06 发动机起动辅助装置总成 Engine Start Auxiliary Device Assembly

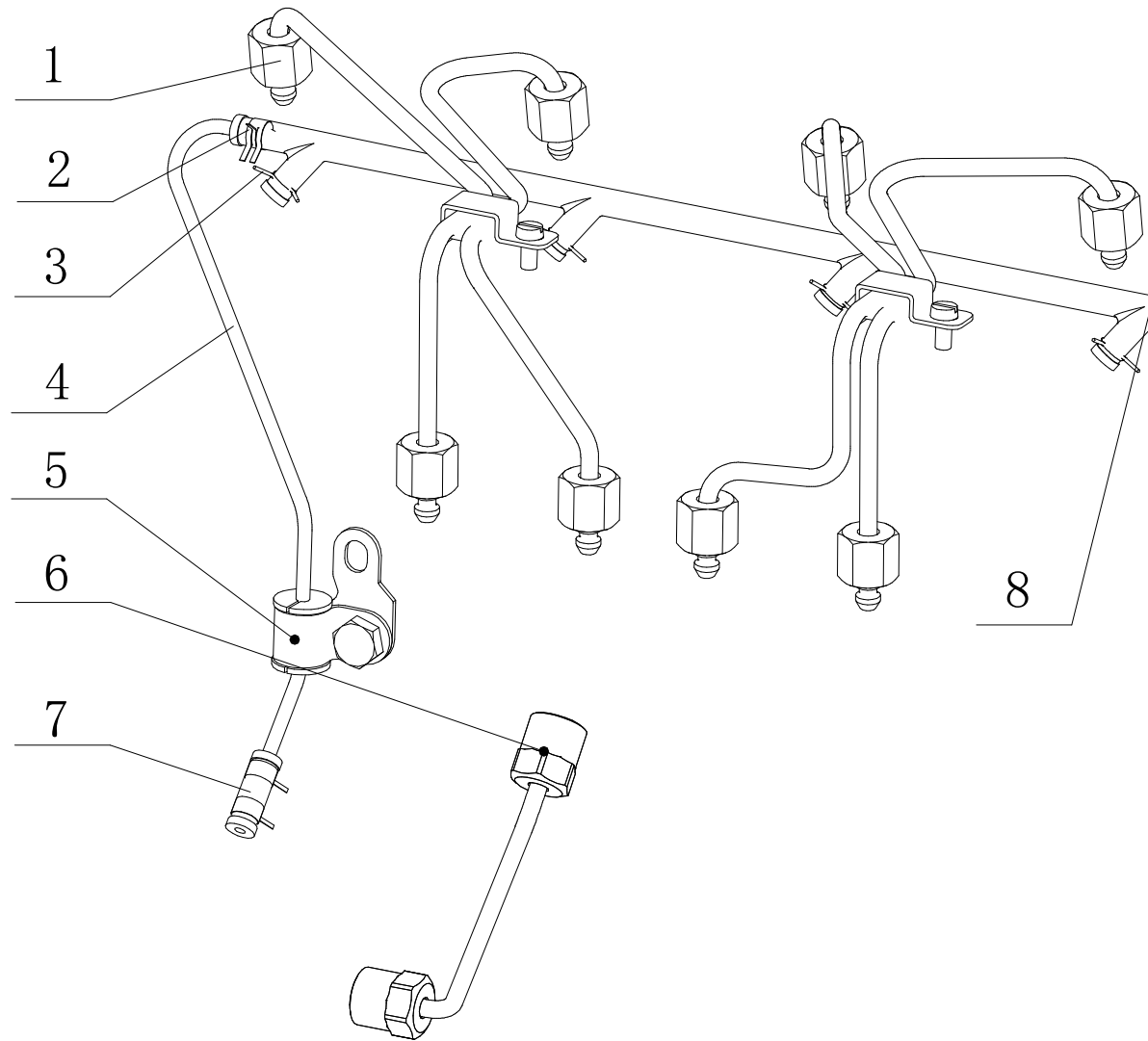


**18. F5000-1015000/06 发动机起动辅助装置总成 Engine Start Auxiliary Device Assembly**

序号 Item	图 号 Part No.	名 称	Name	数量 Qty.	备 注 Remark
1	F5000-1015050	加热器	Heater	1	
	F5100-1015050	加热器	Heater	1	选装 Optional

EWP=Easy Wear Part (易损件)

F5000-1104000/06 供给系管路总成 Fuel Supply Pipeline Assembly



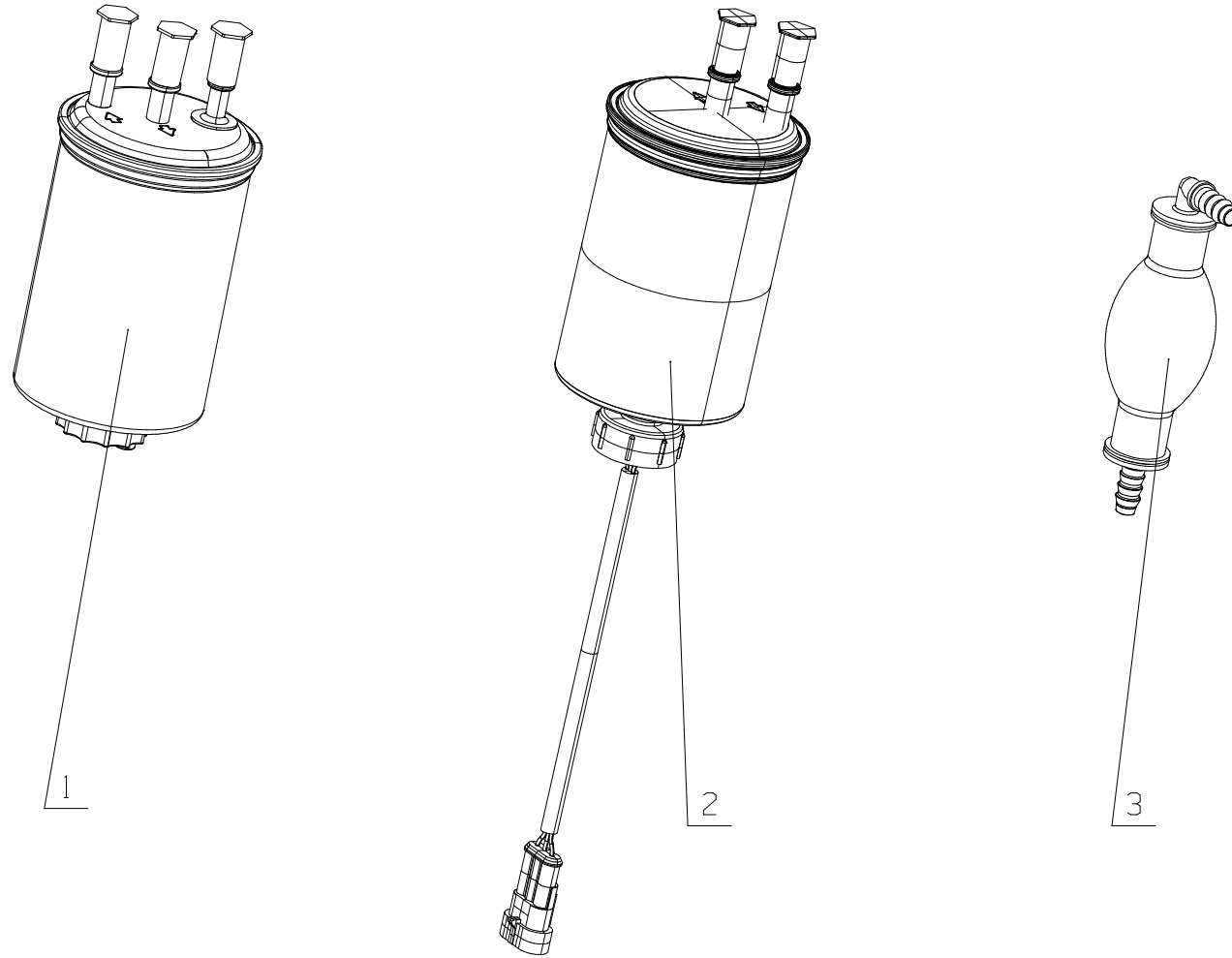
**19. F5000-1104000/06 供给系管路总成 Fuel Supply Pipeline Assembly**

序号 Item	图号 Part No.	名称	Name	数量 Qty.	备注 Remark
1	F5000-1104100A	高压油管部件	High-pressure fuel pipe part	1	
2	Q673B85	环箍 85	Ring hoop 85	3	
3	Q671B85	环箍 85	Ring hoop 85	4	
4	F5000-1104207	油管(I)	Fuel pipe (I)	1	
5	F5000-1104260	管夹组件	Pipe clip subassembly	1	
6	F5000-1104080A	油泵至油轨油管组件	Fuel pipe subassembly between injection pump and fuel rail	1	
7	F5000-1104208	油管(II)	Fuel pipe (II)	1	
8	F5000-1104204A	回油管	Fuel return pipe	1	

EWP=Easy Wear Part (易损件)

20 图 Drawing

F5000-1105000/05 柴油滤清器总成 Fuel Filter Assembly



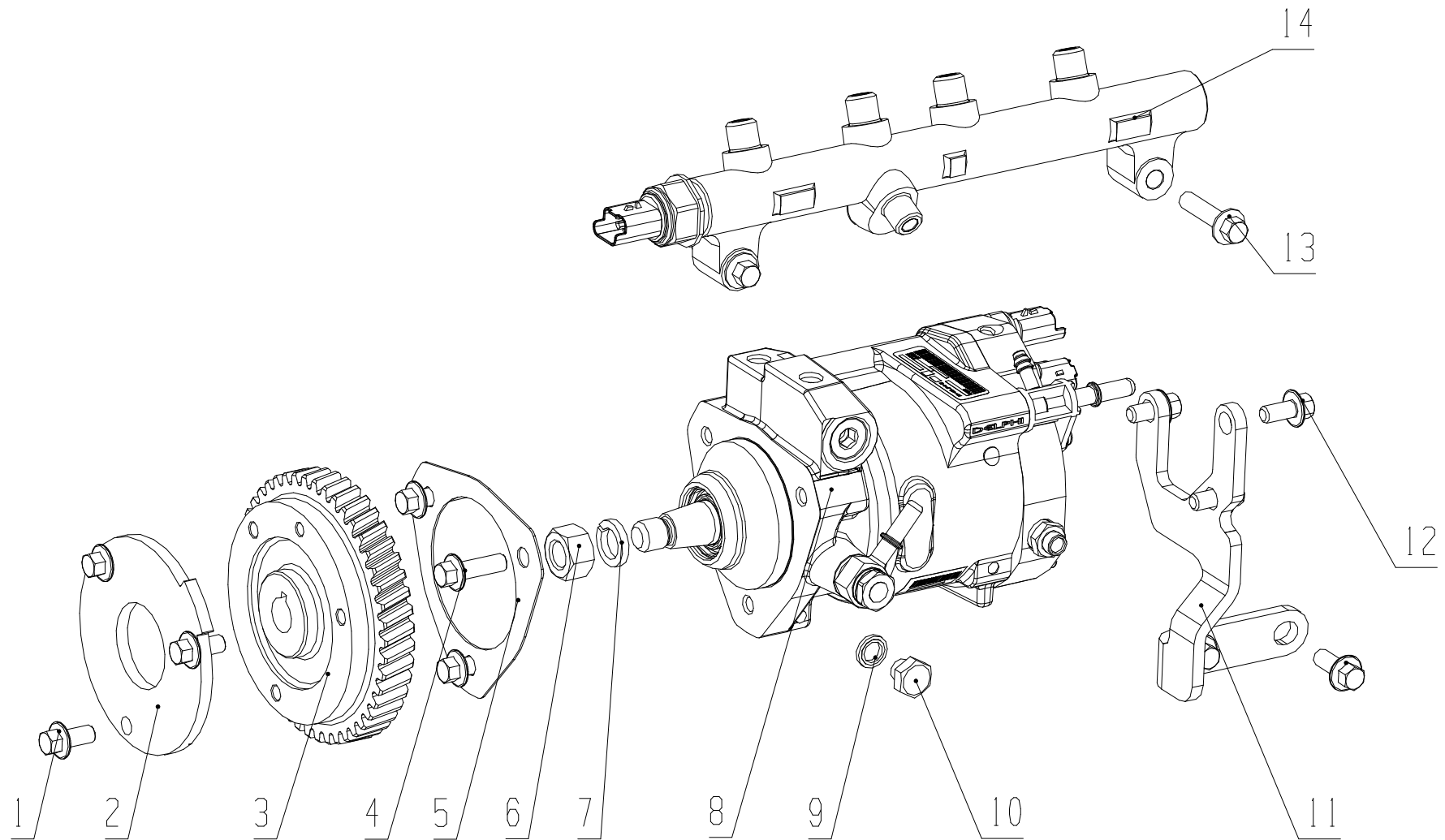
**20.F5000-1105000 /05 柴油滤清器总成 Fuel Filter Assembly**

序号 Item	图号 Part No.	名称	Name	数量 Qty.	备注 Remark
1	W3000-1105100A	柴油滤清器	Fuel filter part	1	易损件EWP (随机附件 accessory with engine)
2	F5100-1105300-614	预滤器部件	Prefilter parts	1	易损件EWP (随机附件 accessory with engine)
3	W3000-1104800	手动输油泵	Manual fuel delivery pump	1	(随机附件 accessory with engine)

EWP=Easy Wear Part (易损件)

21 图 Drawing

F5000-1111000/09 喷油泵总成 Injection Pump Assembly



**21. F5000-1111000/09 喷油泵总成 Injection Pump Assembly**

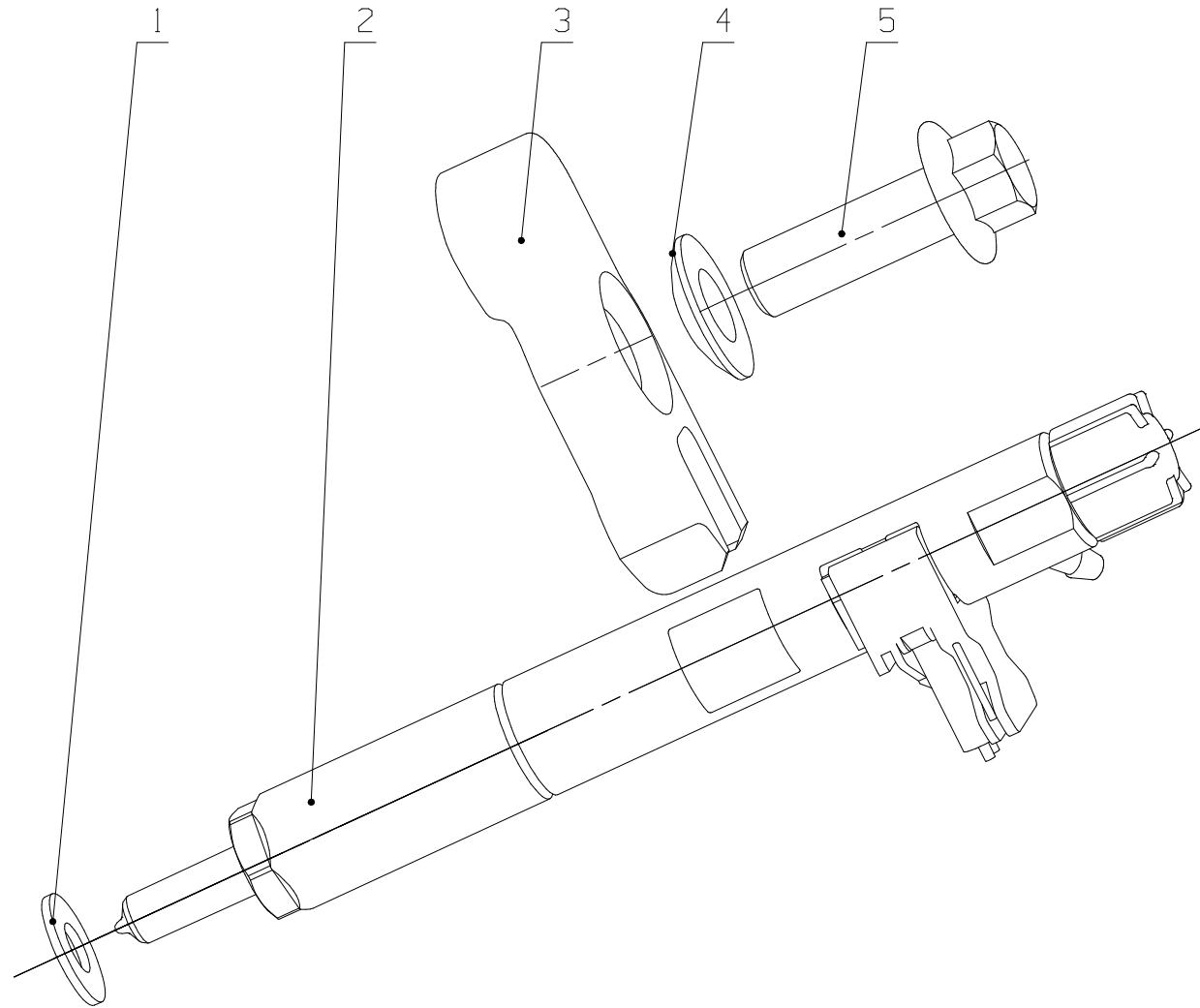
序号 Item	图 号 Part No.	名 称	Name	数量 Qty.	备 注 Remark
1	Q1840816TF2	螺栓 M8X16	Bolt M8X16	5	
2	F5000-1111035B	正时信号盘	Timing signal plate	1	
3	F2000-1111003	燃油喷射泵齿轮	Fuel injection pump gear	1	
4	Q1840825TF2	螺栓 M8X25	Bolt M8X25	3	
5	F5000-1111105	喷油泵垫片	Injection pump gasket	1	易损件 EWP
6	Q341B14	螺母 M14X1.5	Nut M14X1.5	1	
7	Q40314	垫圈 14	Washer 14	1	
8	F5000-1111100-011	喷油泵	Injection pump	1	
9	Q/YC149-10	复合式密封垫圈 10	Seal washer 10	1	易损件 EWP
10	Q/YC198-10	螺塞 M10X1	Screw plug M10X1	1	
11	F2000-1111027	支架	Bracket	1	
12	Q1840816	螺栓 M8X16	Bolt M8X16	3	
13	Q1840835	螺栓 M8X35	Bolt M8X35	2	
14	W3000-1111A00-011	共轨管部件	Common rail pipe part	1	

EWP=Easy Wear Part (易损件)



22 图 Drawing

F5000-1112000/03 喷油器总成 Injector Assembly

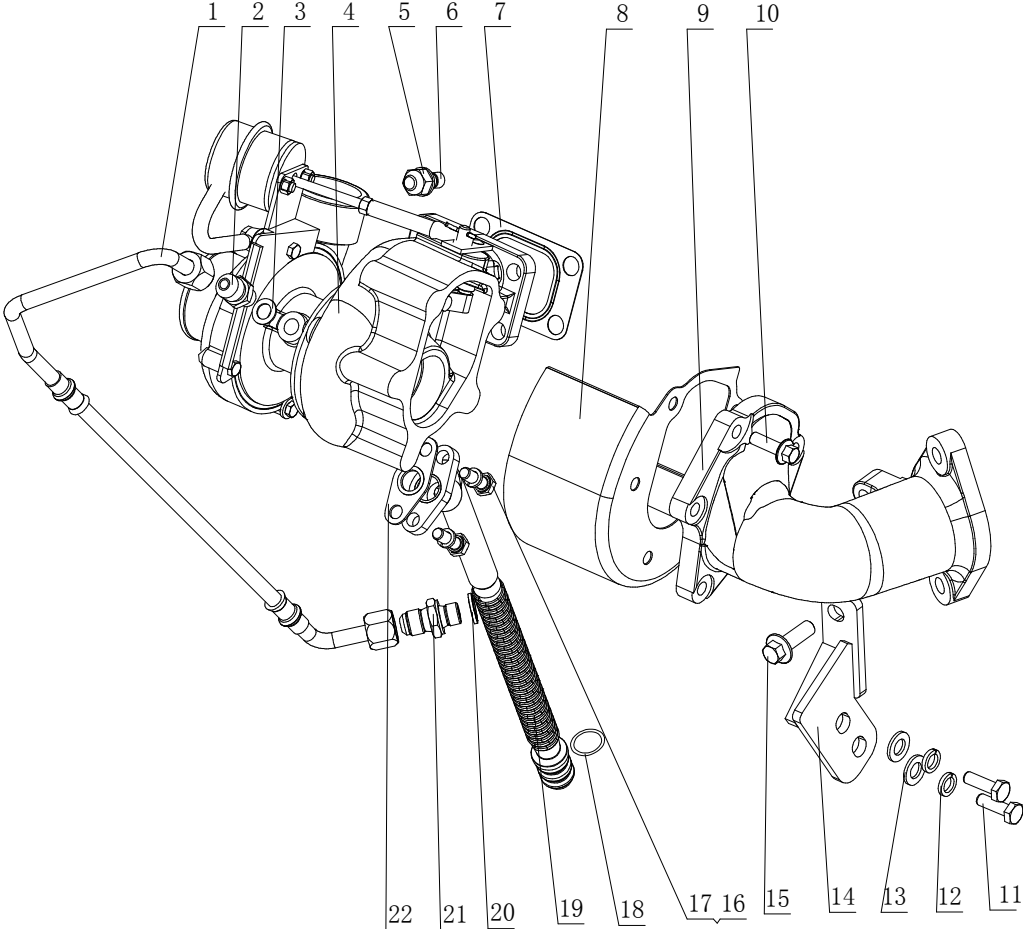


**22. F5000-1112000/03 喷油器总成 Injector Assembly**

序号 Item	图 号 Part No.	名 称	Name	数量 Qty.	备 注 Remark
1	150-1112001	喷油器垫片	Injector gasket	4	易损件 EWP
2	F5000-1112100-011	喷油器部件	Injector parts	4	
3	F5000-1112005A	喷油器压板	Injector pressure plate	4	
4	GB/T849-10	垫圈 10	Lock Washer 10	4	
5	Q1841030TF2	螺栓 M10×30	Bolt M10×30	4	

EWP=Easy Wear Part (易损件)

# F500H-1118000/01 增压器总成 Turbocharger Assembly



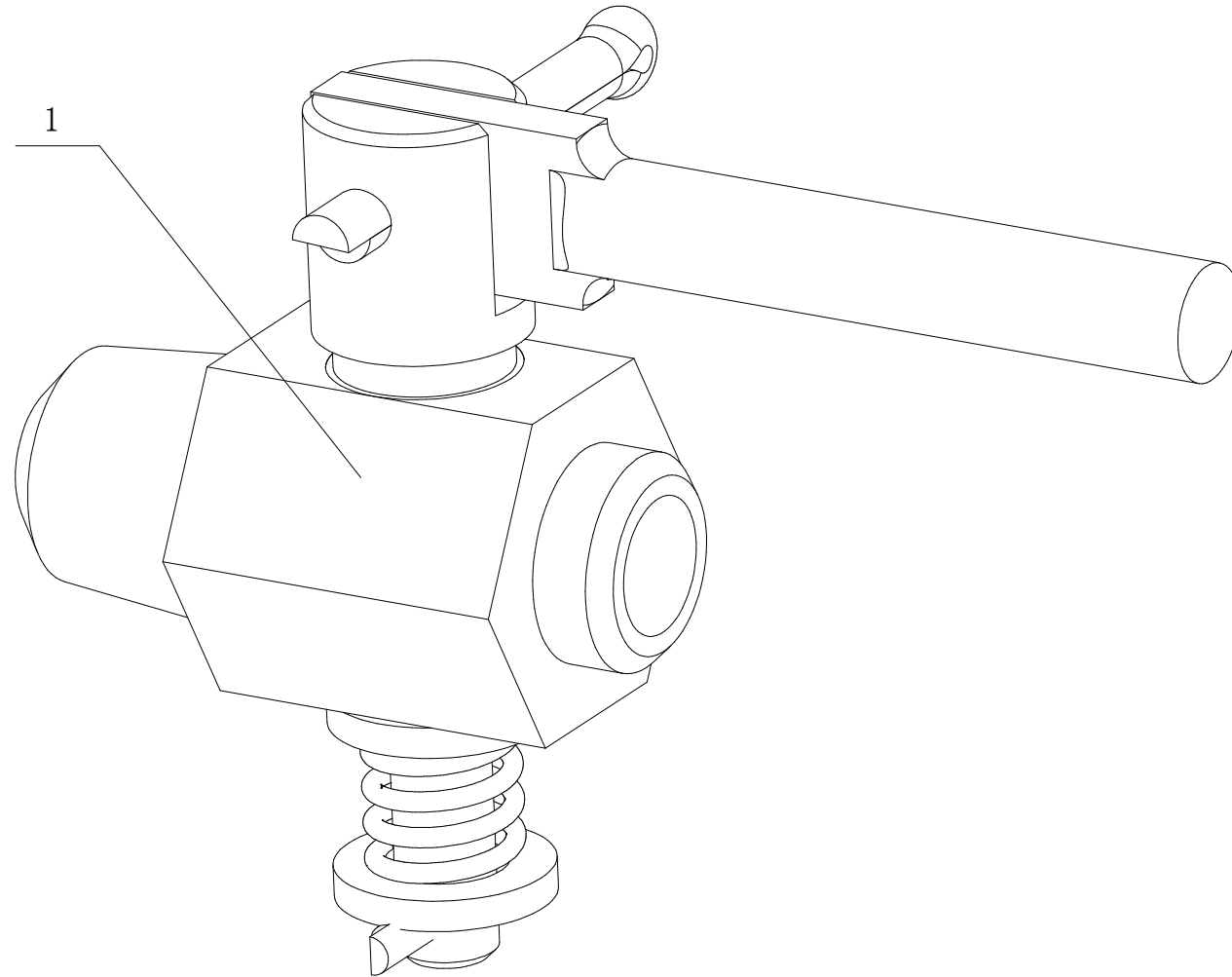
**23.F500H-1118000/01 增压器总成 Turbocharger Assembly**

序号 Item	图 号 Part No.	名 称	Name	数量 Qty.	备 注 Remark
1	F30SA-1118250	进油软管	Oil inlet hose	1	
2	E0200-1118031	增压器进油接头	Turbocharger oil inlet joint	1	
3	Q/YC901-3C12	垫圈 12	Lock Washer 12	1	
4	F50JA-1118100-383	增压器	Turbocharger	1	
5	M3000-1008206B	螺母	Nut	4	
6	150-1118001	双头螺柱	Stud bolt	4	
7	F3000-1118012A	增压器垫片	Turbocharger gasket	1	易损件 EWP
8	F30SA-1118403A	涡壳隔热罩	Turbine heat isolation cover	1	
9	F30SA-1008203A	涡轮后排气接管	Turbine rear exhaust joint	1	
10	Q1840825TF2	螺栓 M8X25	Bolt M8X25	5	
11	Q150B1025TF2	螺栓 M10X25	Bolt M10X25	2	
12	Q40310	垫圈 10	Lock Washer10	2	
13	Q40110	垫圈 10	Lock Washer10	2	
14	F30SA-11180B0	涡轮出口联接管支架 焊接件	Turbine outlet connecting pipe bracket welded part	1	
15	Q1841030TF2	螺栓 M10X30	Bolt M10X30	1	
16	Q150B0825TF2	螺栓 M8X25	Bolt M8X25	2	
17	Q40308	垫圈 8	Lock Washer 8	2	
18	YC208-B01700F	O 形圈 2.65X17	O-ring 2.65X7	2	易损件 EWP
19	F30SA-1118350A	回油管焊接组件	Oil return pipe welded subassembly	1	
20	Q/YC149-14	复合式密封垫圈 14	Seal washer 14	1	易损件 EWP
21	A30-1118021	进油软管接头	Oil inlet hose joint	1	
22	F3000-1118301	垫片	Washer	1	

EWP=Easy Wear Part (易损件)

24 图 Drawing

231-1305000/06 放水开关 Water Drain Cock



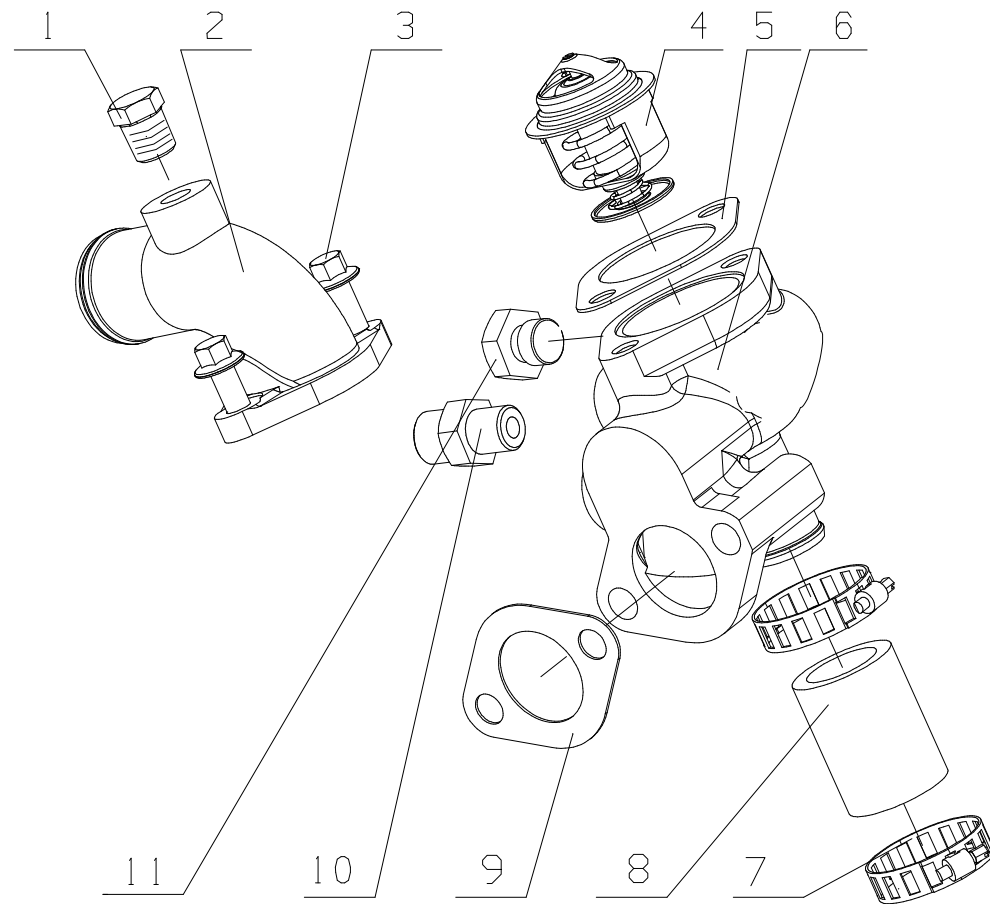
**24. 231-1305000/06 放水开关 Water Drain Cock**

序号 Item	图 号 Part No.	名 称	Name	数量 Qty.	备 注 Remark
1	231-1305000	放水开关	Water drain cock	1	

EWP=Easy Wear Part (易损件)

25 图 Drawing

F50JA-1306000/08 调温器总成 Thermostat Assembly



**25. F50JA-1306000/08 调温器总成 Thermostat Assembly**

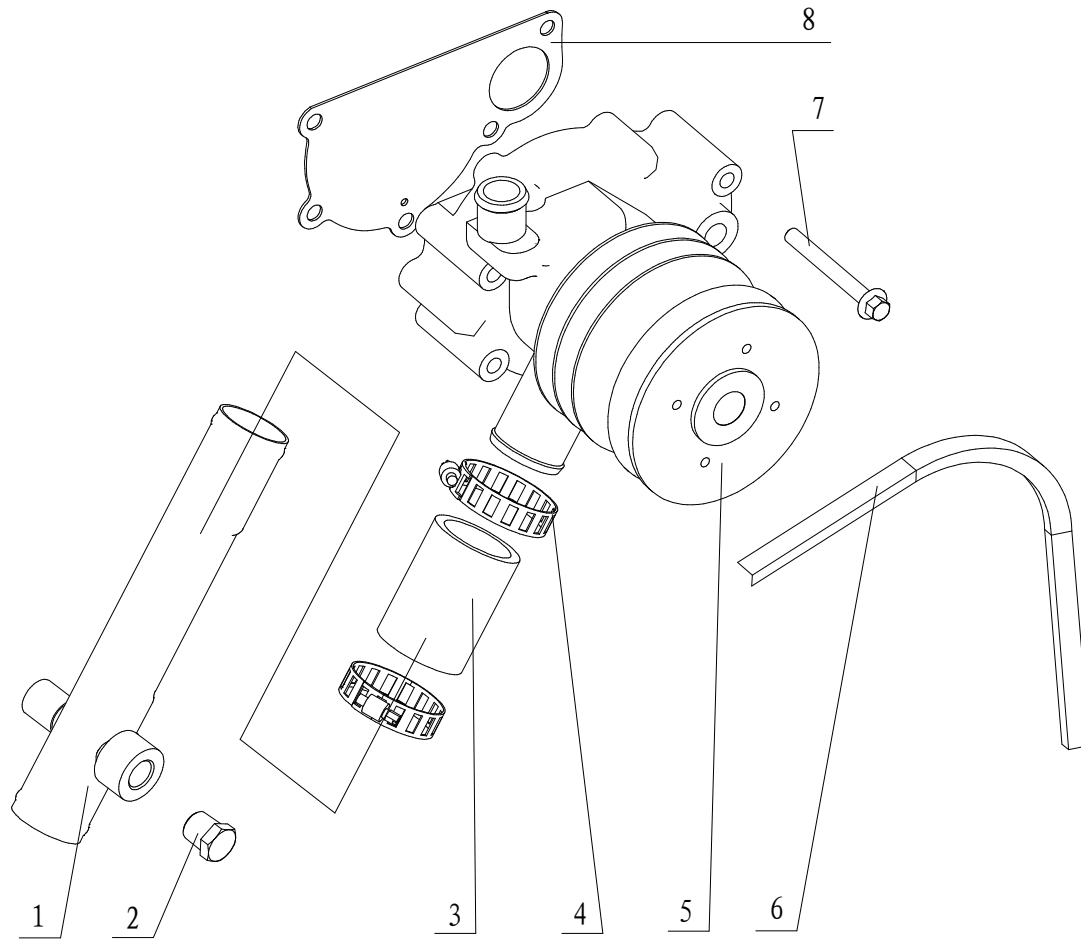
序号 Item	图 号 Part No.	名 称	Name	数量 Qty.	备 注 Remark
1	Q618B02	螺塞 NPT1/4	Plug	1	
2	F3000-1306001A	调温器盖	Thermostat cover	1	
3	Q1840820	螺栓 M8×20	Bolt	2	
4	F30SA-1306004A	调温器	Thermostat	1	
5	F3000-1306002	调温器盖垫片	Thermostat seat cover washer	1	易损件 EWP
6	F50D1-1306003	节温器座	Thermostat seat	1	
7	Q67638	环箍 38	Loop hoop 38	2	
8	F3000-1306005	回水胶管	Water return pipe	1	
9	F3000-1306006	调温器座垫片	Thermostat seat washer	1	易损件 EWP
10	G5800-1105003	过渡接头	Transition connector	1	
11	Q618B03	螺塞 NPT3/8	Plug	1	

EWP=Easy Wear Part (易损件)



26 图 Drawing

F50JA—1307000/04 水泵总成 Water Pump Assembly



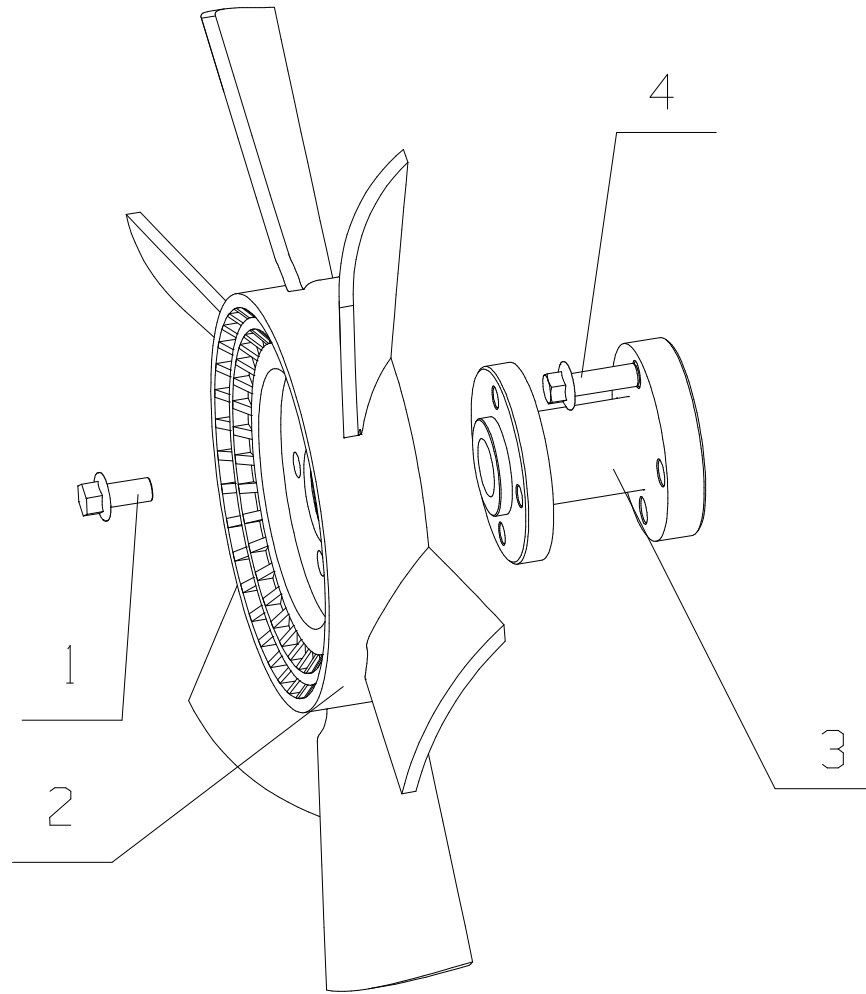
**26. F50JA-1307000/04 水泵总成 Water Pump Assembly**

序号 Item	图 号 Part No.	名 称	Name	数量 Qty.	备 注 Remark
1	F300A-1307250B	水泵进水管组件	Water inlet pipe subassembly of Water pump	1	
2	Q618B03	螺塞 NPT 3/8	Screw plug	1	
3	F7100-1307263	旁通阀软管	Bypass valve hose	1	
4	Q67650	环箍 50	Ring hoop 50	2	
5	F3100-1307100C	水泵部件	Water pump parts	1	
6	150-3701040B	发电机皮带	Alternator belt	2	易损件 EWP
7	Q1840870TF2	螺栓 M8×70	Bolt M8×70	1	
8	F3000-1307001	水泵垫片	Water pump washer	1	易损件 EWP

EWP=Easy Wear Part (易损件)

27 图 Drawing

F30SA-1308000/06 风扇总成 Fan Assembly



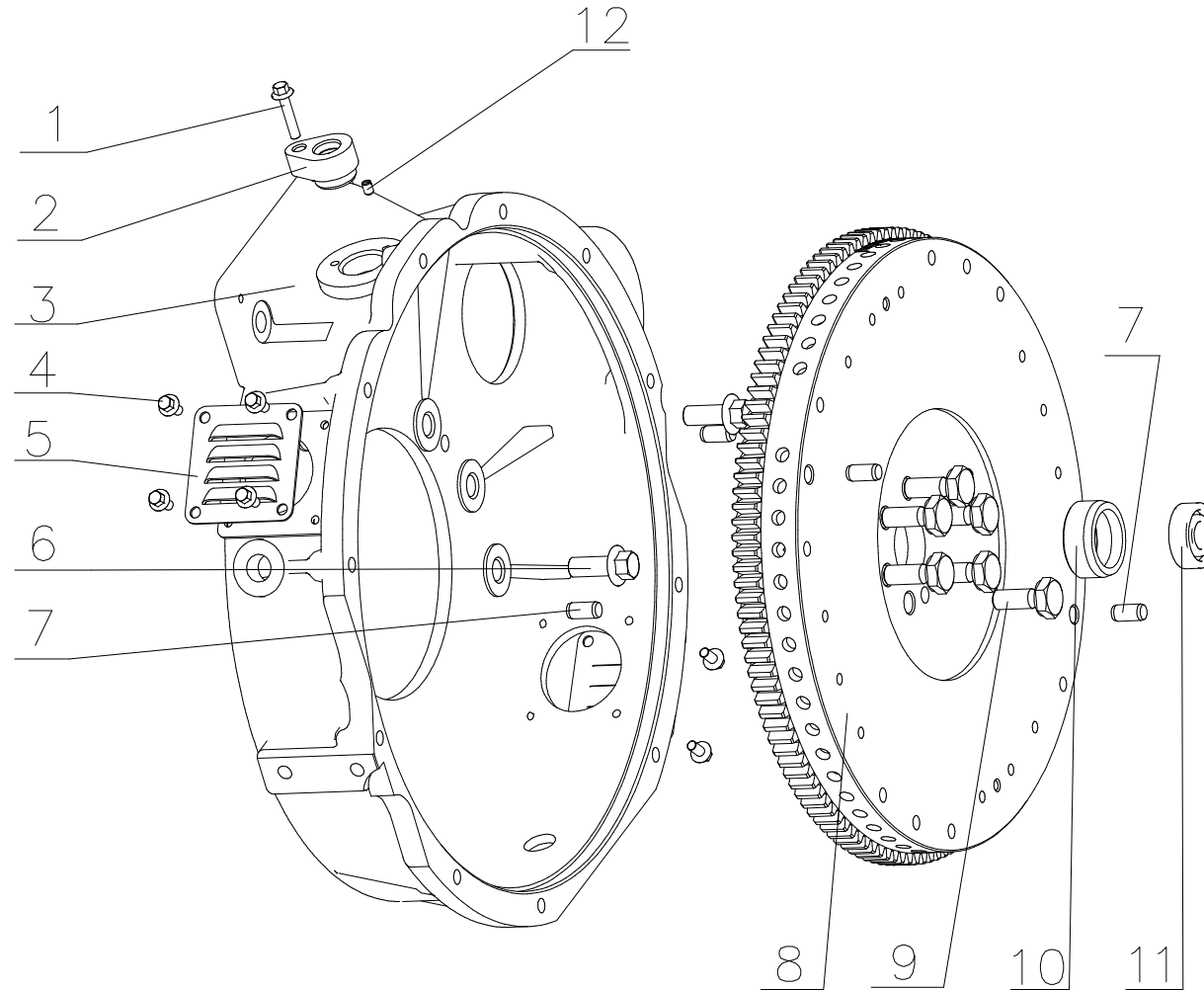
**27. F30SA-1308000/06 风扇总成 Fan Assembly**

序号 Item	图 号 Part No.	名 称	Name	数量 Qty.	备 注 Remark
1	Q1841020TF2	螺栓 M10X20	Bolt M10X20	4	
2	F3000-1308010	风扇组件	Fan	1	
3	388-1308015C	垫块	Cushion block	1	
4	Q1841030TF2	螺栓 M10X30	Bolt M10X30	4	

EWP=Easy Wear Part (易损件)

28 图 Drawing

F50JM-160000/02 动力输出总成 Power Output Assembly

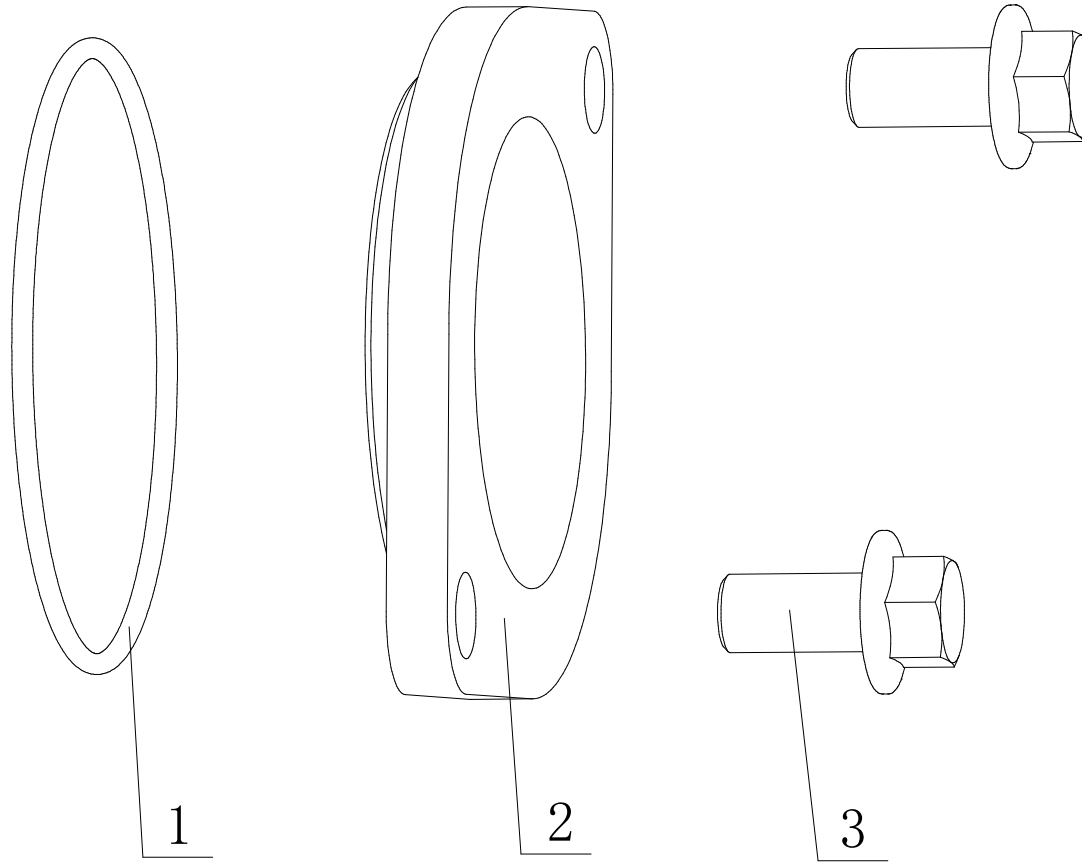


**28. F50JM-160000/02 动力输出总成 Power Output Assembly**

序号 Item	图 号 Part No.	名 称	Name	数量 Qty.	备 注 Remark
1	Q1840630	螺栓 M6×30	Bolt M6×30	1	
2	F5000-1600413	衬套	Bushing	1	
3	F5A00-1600401B	飞轮壳	Flywheel case	1	
4	Q1840612	螺栓 M6×12	Bolt M6×12	8	
5	B3000-1600021	盖板	Cover plate	2	
6	Q1841230TF2	螺栓 M12×30	Bolt	10	
7	YC24-1020	圆柱销 10×20	Pin	4	
8	F5000-1005360B	飞轮及齿圈组件	Flywheel and gear ring	1	
9	F3000-1005063	飞轮螺栓	Flywheel bolt	6	
10	F30SA-1005365	轴承座	Bearing seat	1	
11	GB/T276-6203-2RS	滚动轴承	Rolling bearing	1	
12	Q2820608T10F9	开槽平端紧定螺钉 M6X8	Slotted flat end fixing screw	1	

EWP=Easy Wear Part (易损件)

F300D-3407000/04 转向泵总成 Steering Pump Assembly



**29. F300D-3407000/04 转向泵总成 Steering Pump Assembly**

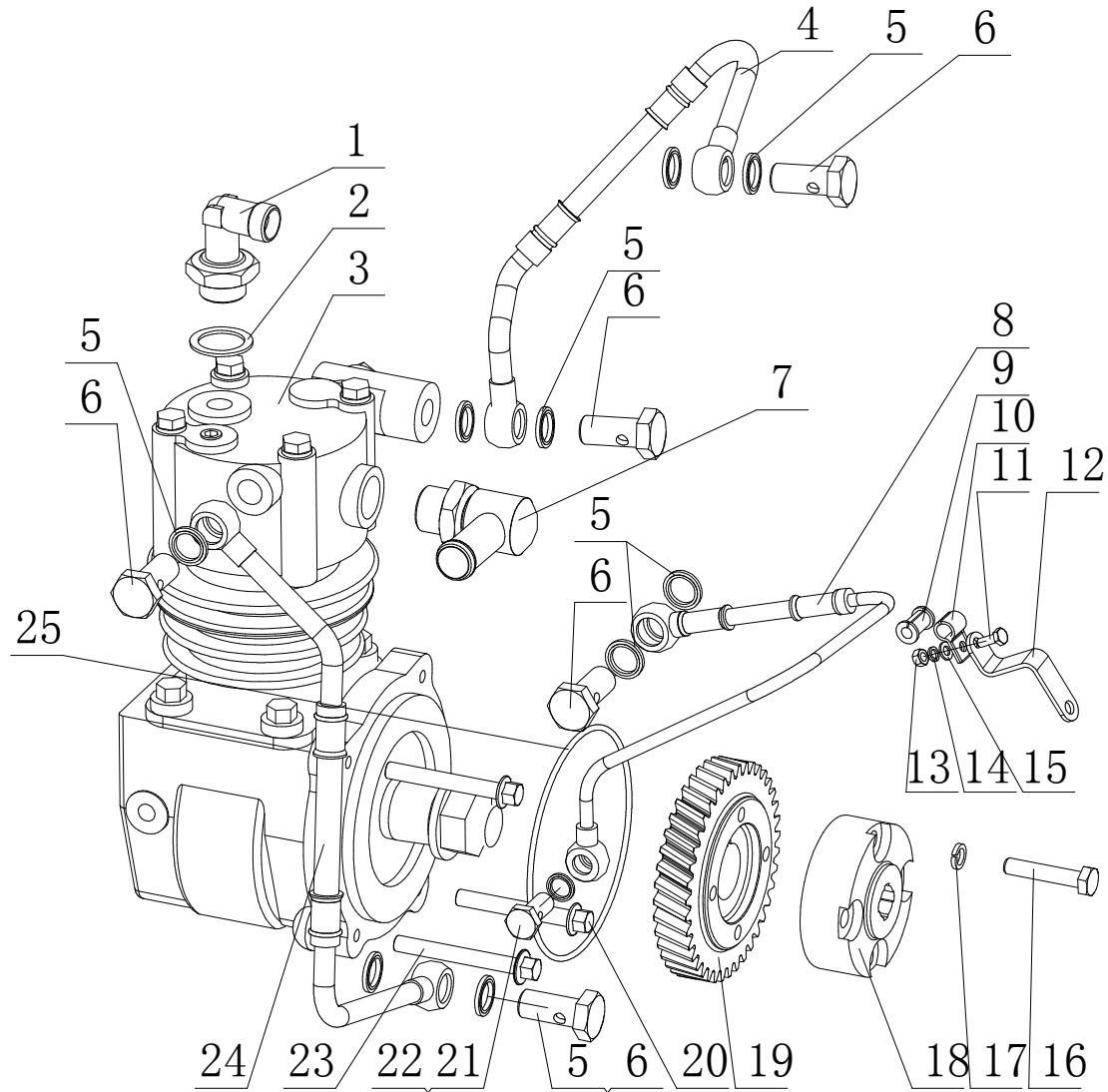
序号 Item	图 号 Part No.	名 称	Name	数量 Qty.	备 注 Remark
1	YC208-B07500F	O 形圈 2.65×75	O-ring	1	易损件 EWP
2	F3100-1002209A	转向泵盖板	Steering pump cover plate	1	
3	Q1841020	螺栓 M10X20	Bolt M10X20	2	

EWP=Easy Wear Part (易损件)



30 图 Drawing

F50FC-3509000/03 气动制空气压缩机总成 Pneumatic Air Compressor Assembly

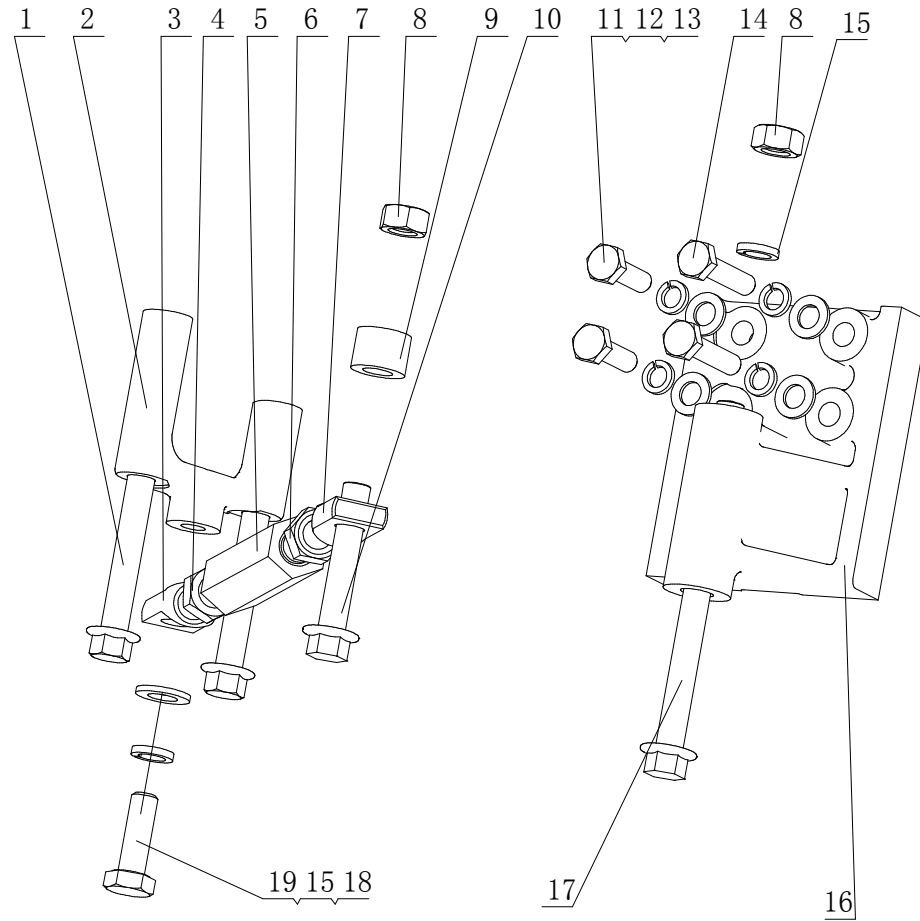


### 30. F50FC-3509000/03 气动制空气压缩机总成 Pneumatic Air Compressor Assembly

序号 Item	图 号 Part No.	名 称	Name	数量 Qty.	备 注 Remark
1	E0208-3509070	出气接头组件	Air outlet joint subassembly	1	
2	Q/YC901-3C22	垫圈 22	Washer	1	
3	F3700-3509100B	空气压缩机	Air compressor	1	廊坊 langfang
4	F50JG-3509340	空压机进水管组件	Air compressor water inlet pipe subassembly	1	
5	Q/YC149-14	复合式密封垫圈 14	Seal washer 14	10	易损件 EWP
6	6QA6-1307017	管接螺栓	Bolt	5	
7	630-3509030	进气管接头组件	Air intake pipe joint subassembly	1	
8	F31FE-3509240	空压机进油管组件	Oil inlet pipe assembly, air compressor	1	
9	M3200-1104363	胶套	Rubber sleeve	1	
10	B3221-1104122	管夹	Pipe clamp	2	
11	Q150B0616	螺栓 M6X16	Bolt M6X16	1	
12	F31FE-3509601	管夹支架	Clamp bracket	1	
13	Q340B06	螺母 M6	Nut M6	1	
14	Q40306	垫圈 6	Washer 6	1	
15	Q40106	垫圈 6	Washer 6	1	
16	Q150B0840TF2	螺栓 M8X40	Bolt M8×40	4	
17	Q40308	垫圈 8	Lock Washer 8	4	
18	L3001-3407013B	花键套	Key sleeve	1	
19	F3100-3509001	空气压缩机齿轮	Air compressor gear	1	
20	Q1840865TF2	螺栓 M8X65	Bolt M8X65	1	
21	Q/YC149-10	复合式密封垫圈 10	Seal washer 10	2	易损件 EWP
22	150-3509023	进油螺栓	Hollow bolt for oil	1	
23	Q1840860TF2	螺栓 M8X60	Bolt M8X60	2	
24	F31FE-3509440	空压机回水管组件	Air compressor water return pipe subassembly	1	
25	YC208-B10900F	O 形圈 2.65X109	O-ring 2.65X109	1	易损件 EWP

EWP=Easy Wear Part (易损件)

# F50JM-3701000/01 发电机总成 Alternator Assembly



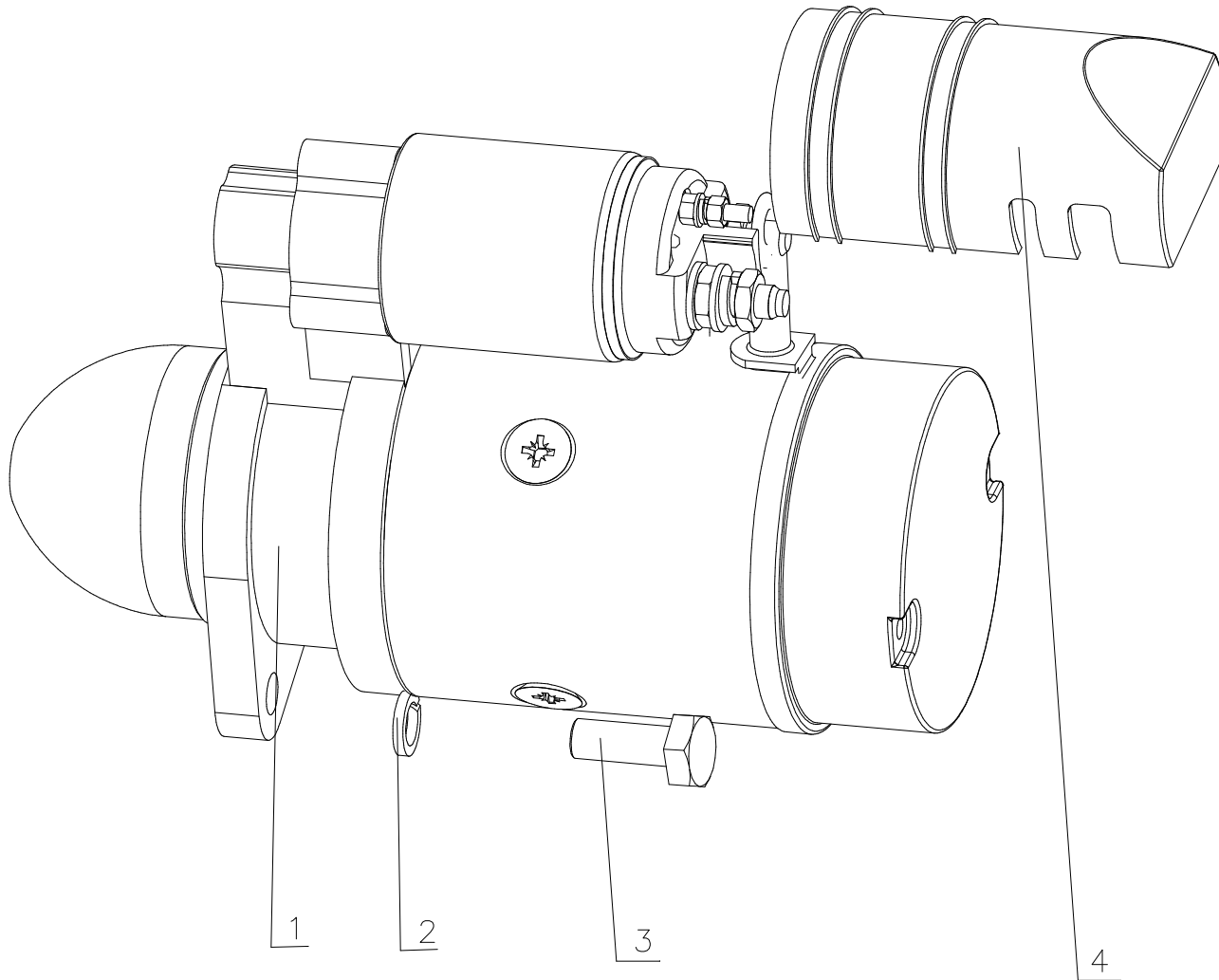
**31. F50JM-3701000/01 发电机总成 Alternator Assembly**

序号 Item	图号 Part No.	名称	Name	数量 Qty.	备注 Remark
1	Q1841095TF2	螺栓 M10X95	Bolt M10X95	2	
2	F3100-3701242A	加强板	Strengthen plate	1	
3	231-3701034	调节螺柱 II	Adjusting stud	1	
4	Q340B12	螺母 M12	Nut	1	
5	231-3701033	调节杆	Adjusting rod	1	
6	231-3701032	锁紧螺母	Locking nut	1	
7	231-3701031	调节螺柱 I	Adjusting stud	1	
8	Q340B10	螺母 M10	Nut	2	
9	F30SA-3701038	垫块 I	Cushion block I	1	
10	Q1841055TF2	螺栓 M10X55	Bolt	1	
11	Q150B0825TF2	螺栓 M8X25	Bolt	2	
12	Q40308	垫圈 8	Washer	4	
13	Q40108	垫圈 8	Washer	4	
14	Q150B0835TF2	螺栓 M8X35	Bolt	2	
15	Q40310	垫圈 10	Washer	2	
16	F50JA-3701002	发电机支架	Alternator stand	1	
17	Q150B10130	螺栓 M10X130	Bolt M10X30	1	
18	Q150B1030TF2	螺栓 M10X30	Bolt M10X30	1	
19	Q40110	垫圈 10	Lock Washer 10	1	

EWP=Easy Wear Part (易损件)

32 图 Drawing

F7200-3708000/04 起动机总成 Starter Assembly



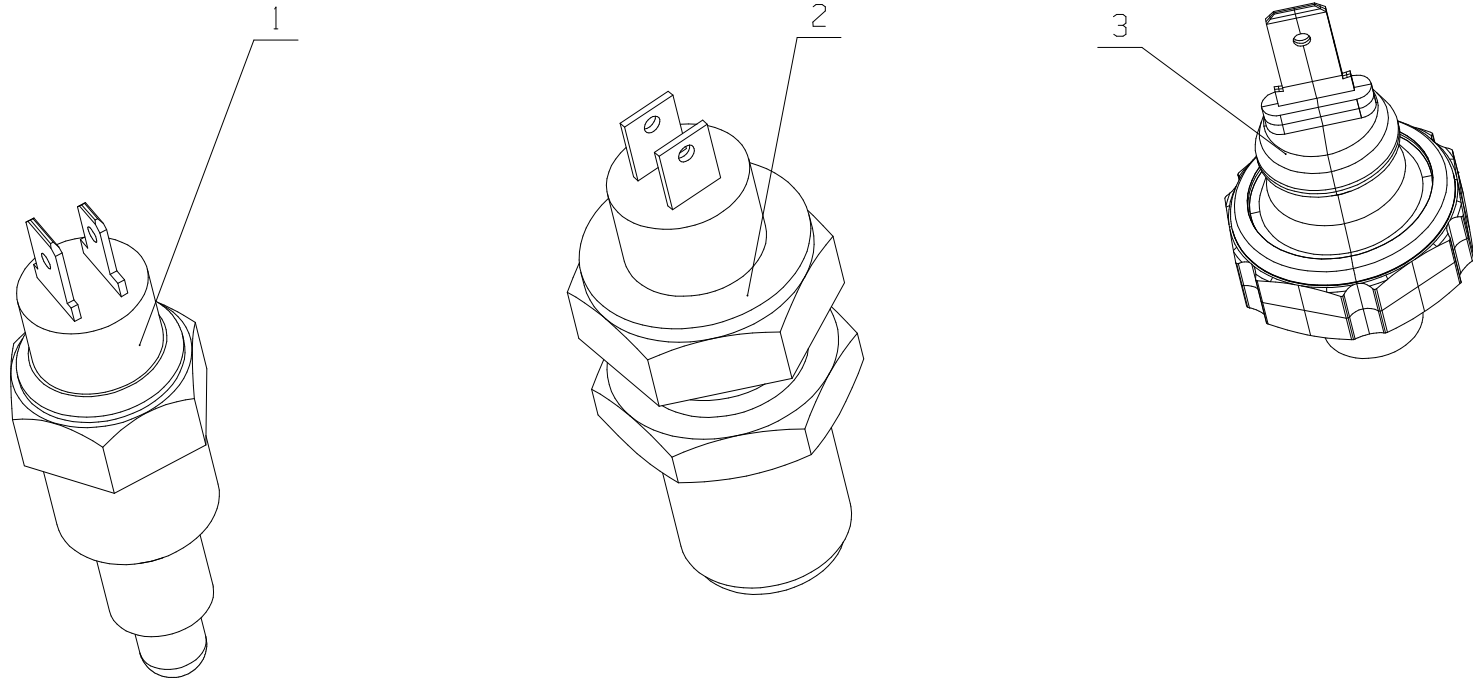
**32. F7200-3708000/04 起动机总成 Starter Assembly**

序号 Item	图 号 Part No.	名 称	Name	数量 Qty.	备 注 Remark
1	F7200-3708100	起动机	Starter	1	神电 shendian
	F3100-3708-01-443	单向器	Isolator	1	神 电 Shendian
	F7200-3708-02-443	磁吸开关组件	Magnetic switch subassembly	1	神电 Shendian
2	Q40312	垫圈 12	Lock Washer 12	2	
3	Q150B1230TF2	螺栓 M12X30	Bolt M12X30	2	
4	A3206-3708104A	起动机防护罩	Starter protection cover	1	易损件 EWP

EWP=Easy Wear Part (易损件)

33 图 Drawing

F50D1-3800000/01 仪表、感应器总成 Instrument& Sensor Assembly



**33、F50D1-3800000/01 仪表、感应器总成 Instrument& Sensor Assembly**

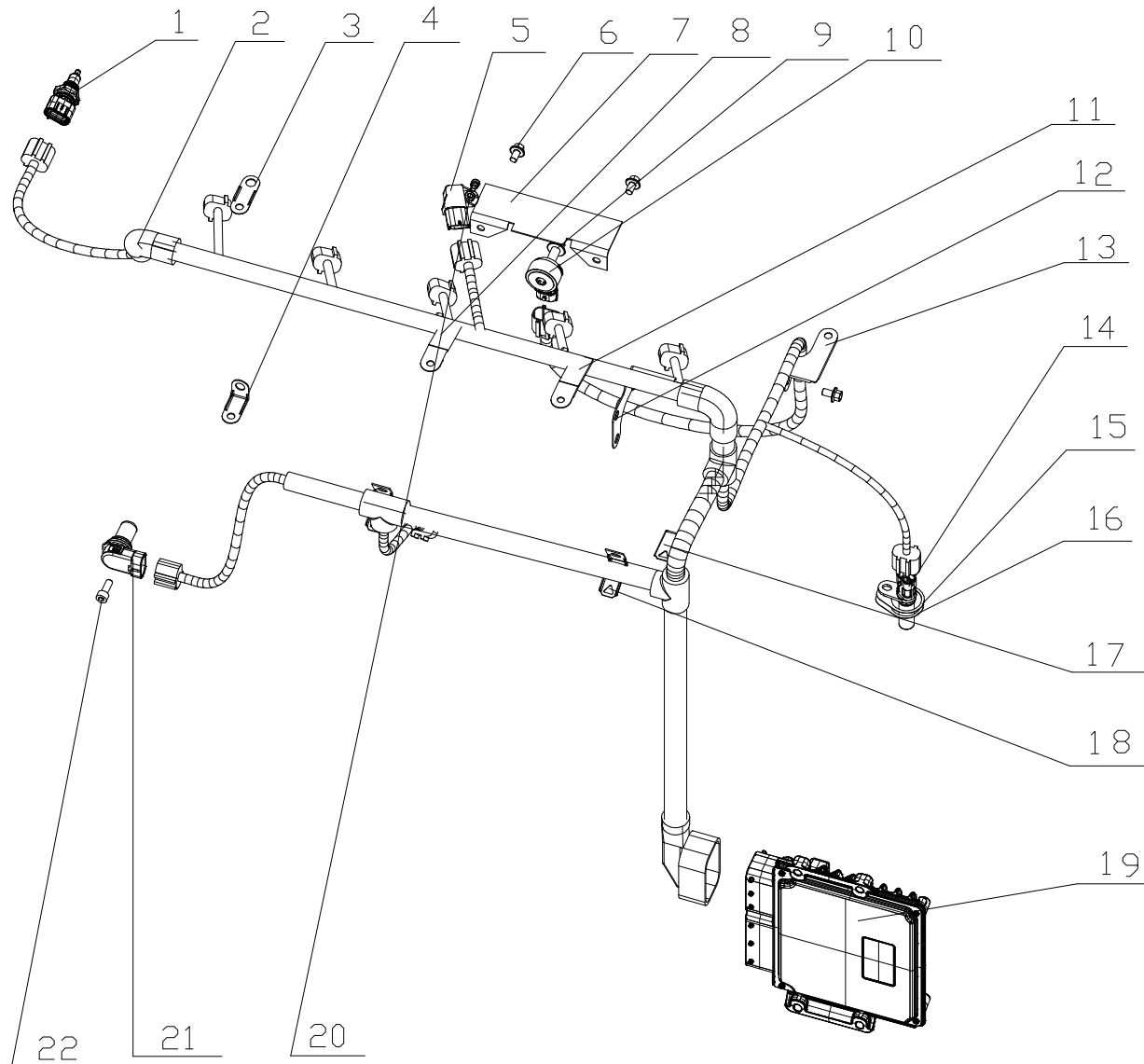
序号 Item	图 号 Part No.	名 称	Name	数量 Qty.	备 注 Remark
1	F50D1-3800100	水温感应器	Water temperature sensor	1	
2	675-3800040	转速传感器	Rotating speed sensor	1	
3	F3400-3800400	油压过低报警器	Low oil pressure alarm	1	

EWP=Easy Wear Part (易损件)



34 图 Drawing

F50JM-3823000/01 控制器总成 Control System Assembly



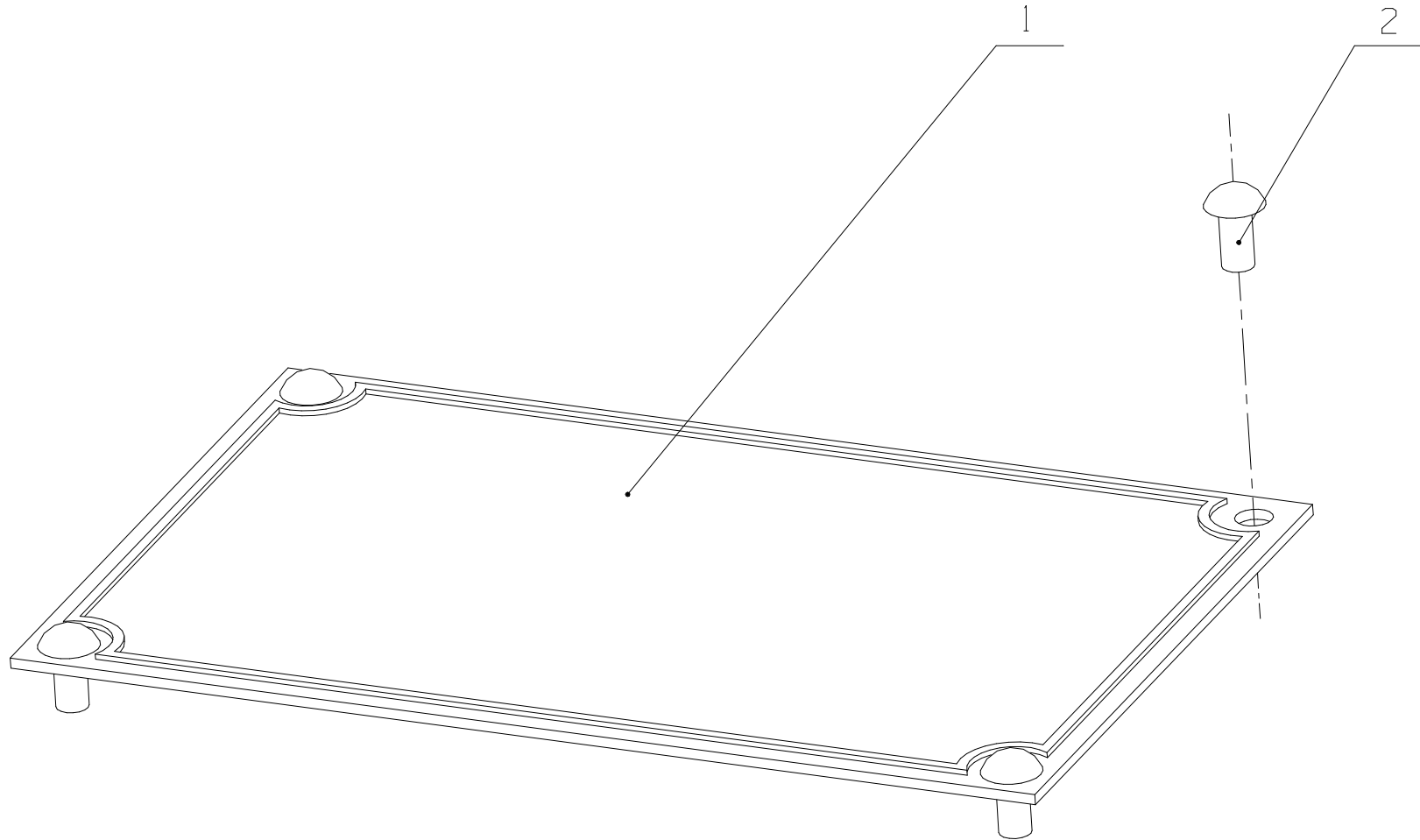
### 34. F50JM-3823000/01 控制器总成 Control System Assembly

序号 Item	图 号 Part No.	名 称	Name	数量 Qty.	备 注 Remark
1	W3000-3823180	水温传感器	Water temp. sensor	1	
2	F5000-3823350	发动机线束组件	Wiring harness part	1	
3	F5000-3823209A	线束卡 IX	Wiring harness clip IX	1	
4	F5000-3823204	线束卡 IV	Wiring harness IV	1	
5	G2100-3823140	增压压力及温度传感器	Supercharge pressure& temp. sensor	1	
6	Q1840610	螺栓 M6X10	Bolt M8X10	3	
7	F5000-3823151A	爆震传感器护罩	Detonation sensor cover	1	
8	F5000-3823202A	线束卡 II	Wiring harness II	1	
9	Q1840830	螺栓 M8X30	Bolt M8X30	1	
10	W3000-3823150	爆震传感器	Detonation sensor	1	
11	F5000-3823201A	线束卡 I	Wiring harness clip I	1	
12	F5000-3823203A	线束卡 III	Wiring harness III	1	
13	F5000-3823206A	线束卡 VI	Wiring harness VI	1	
14	W3000-3823170	曲轴转速传感器	Crankshaft rotating speed sensor	1	
15	F5000-3823035	调整垫	Adjusting cushion	1	
16	J5600-3800312	转速传感器支架调整垫片 II	Speed sensor bracket adjusting gasket II	适 量 proper amount	
17	F5000-3823208	线束卡 VIII	Wiring harness clip VIII	1	
18	F5000-3823207A	线束卡 VII	Wiring harness clip VII	2	
19	F500H-3823350	控制器组件	Controller subassembly	1	
20	Q218B0612	螺钉 M6X12	Screw M6×12	1	
21	W3000-3823160	凸轮轴相位传感器	Camshaft phase position sensor	1	
22	Q218B0616	螺钉 M6×16	Screw M6×16	1	

EWP=Easy Wear Part (易损件)

35 图 Drawing

F5000-3904000A/01 标牌总成 Dataplate Assembly

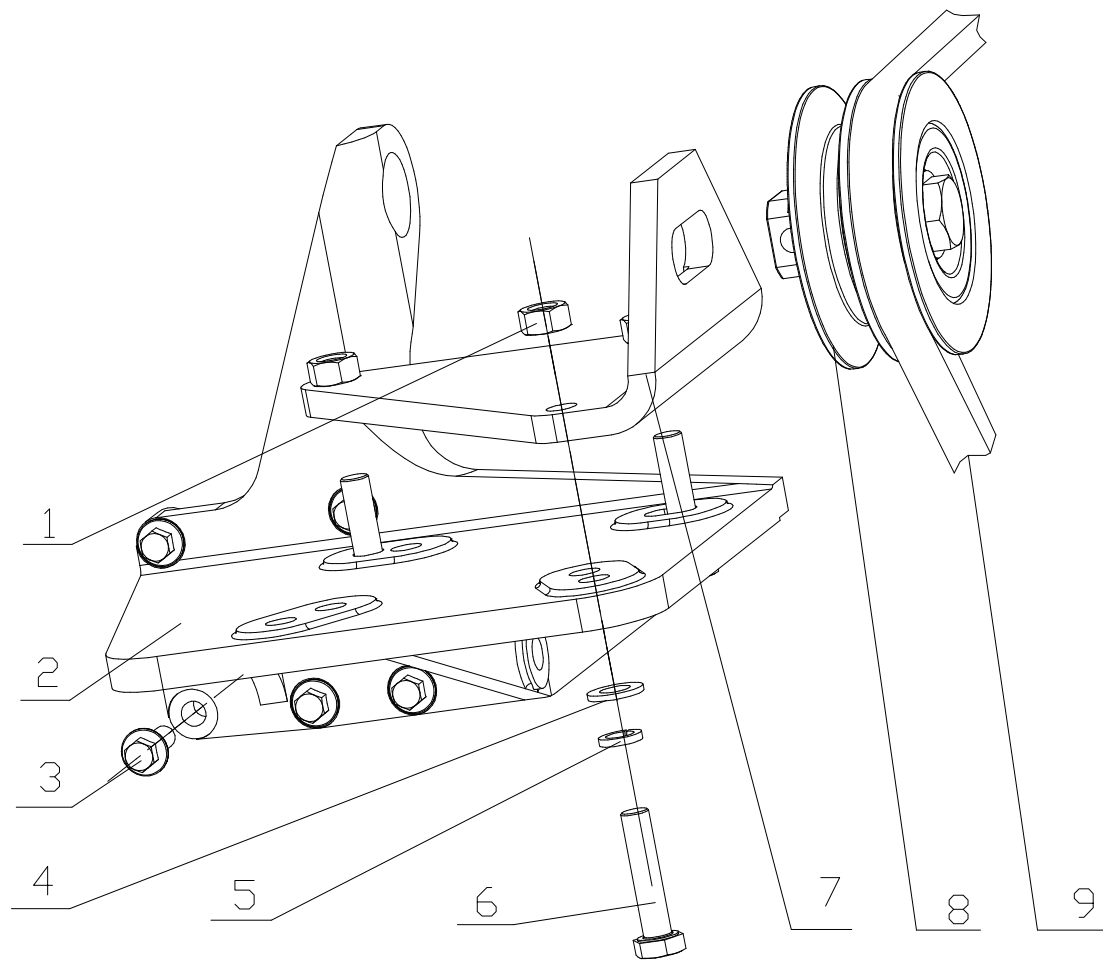


**35. F5000-3904000A/01 标牌总成 Dataplate Assembly**

序号 Item	图 号 Part No.	名 称	Name	数量 Qty.	备 注 Remark
1	YC394-AF5000	标牌 YC4F115-30	Dataplate YC4F115-30	1	
2	YC5-0306	铆钉 3X6	Rivet 3X6	4	

EWP=Easy Wear Part (易损件)

F30SA-8104000/07 空调压缩机总成 Air Conditioner Compressor Assembly



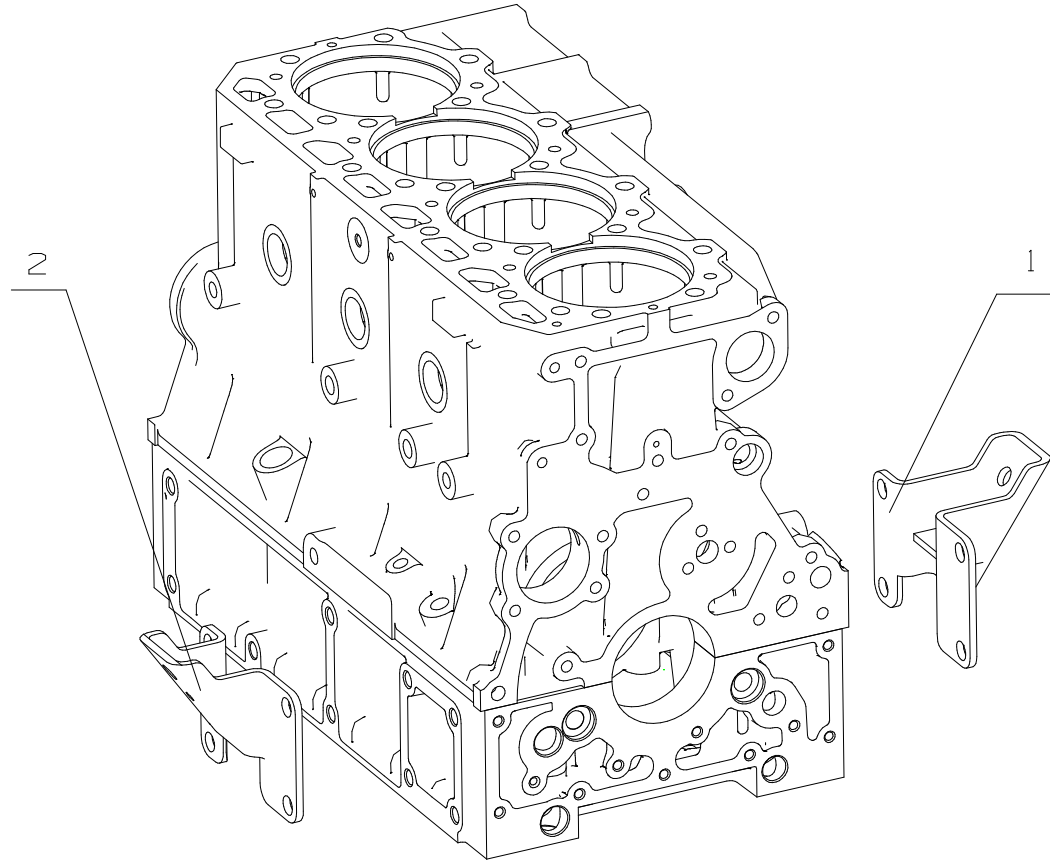
**36、F30SA-8104000/07 空调压缩机总成 Air Conditioner Comperssor Assembly**

序号 Item	图 号 Part No.	名 称	Name	数量 Qty.	备 注 Remark
1	Q340B10	螺母 M10	Nut M10	3	
2	F30SA-8104007C	空调机支架	Air condition bracket	1	
3	Q1840825TF2	螺栓 M8×25	Bolt M8×25	5	
4	Q40110	垫圈	Washer	3	
5	Q40310	垫圈	Washer	3	
6	Q150B1045TF2	螺栓 M10×45	Bolt M10×45	3	
7	F30SA-8104371	代用轮支架	Substitute wheel support	1	
8	1532-8104050	张紧轮组件	Tension pulley gear subassembly	1	
9	F30SA-8104004	空调机皮带	Belt of air-conditioner	2	

EWP=Easy Wear Part (易损件)

3 图 Drawing

**F30MA-1001000/01 发动机悬置总成 Engine Suspension Assembly**



## 37、F30MA-1001000/01 发动机悬置总成 Engine Suspension Assembly

序号 Item	图 号 Part No.	名 称	Name	数量 Qty.	备 注 Remark
1	F3400-1001070	前左支架	Front left bracket	1	
2	F3400-1001080	前右支架	Front right bracket	1	

EWP=Easy Wear Part (易损件)