

Install

1. Before installation, check whether the size of the foundation's anchor bolts and the size of the anchor screw holes are the same.
2. Check whether the tools and parts required for installation are complete.
3. When installing a horizontal pump, after placing the pump on the foundation, use a level to place it on the pump shaft to calibrate the level. The gap between the two couplings must comply with the requirements of the general drawing. And the gap is at the end point.

For vertically installed pumps, if the pump shaft is extended and connected with a universal joint, it is necessary to check whether the size of the anchor screw holes on the cement floor of the motor layer matches the size of the anchor screw holes on the motor base. The cement floors should be kept equal. For pumps equipped with mechanical seals, the axial and radial deviations between the two couplings shall not exceed 0.04mm, and those equipped with packing seals shall not exceed 0.1mm.

Whether the platform elevation and pump foundation elevation meet the design requirements. If conditions restrict that the pump and motor cannot be installed concentrically, please contact the company's design department. However, the maximum allowed non-concentric angle is must exceed 10° .

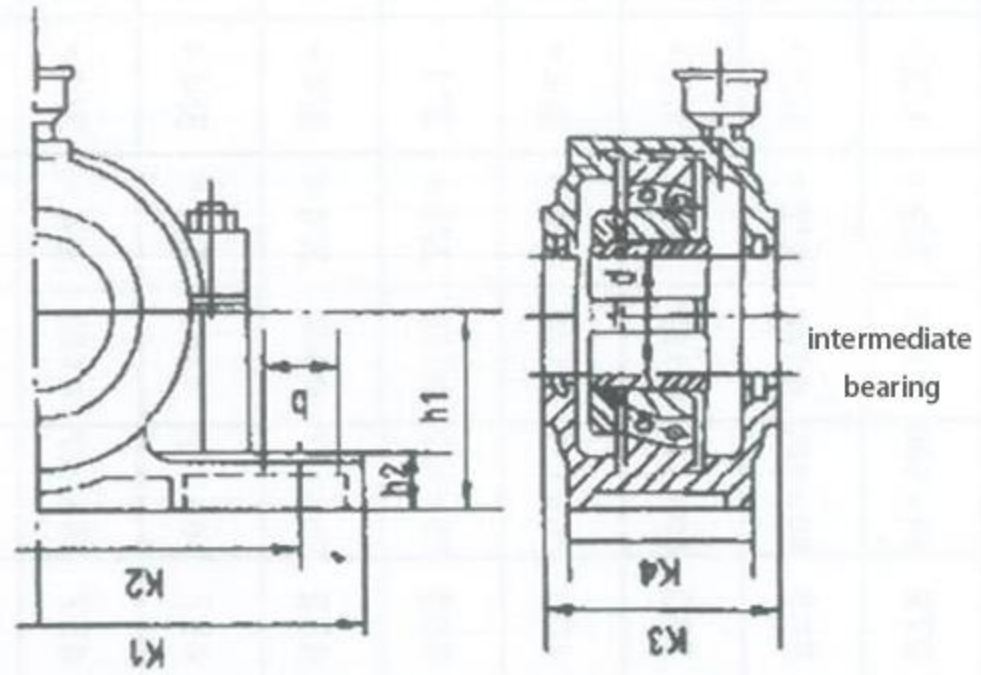
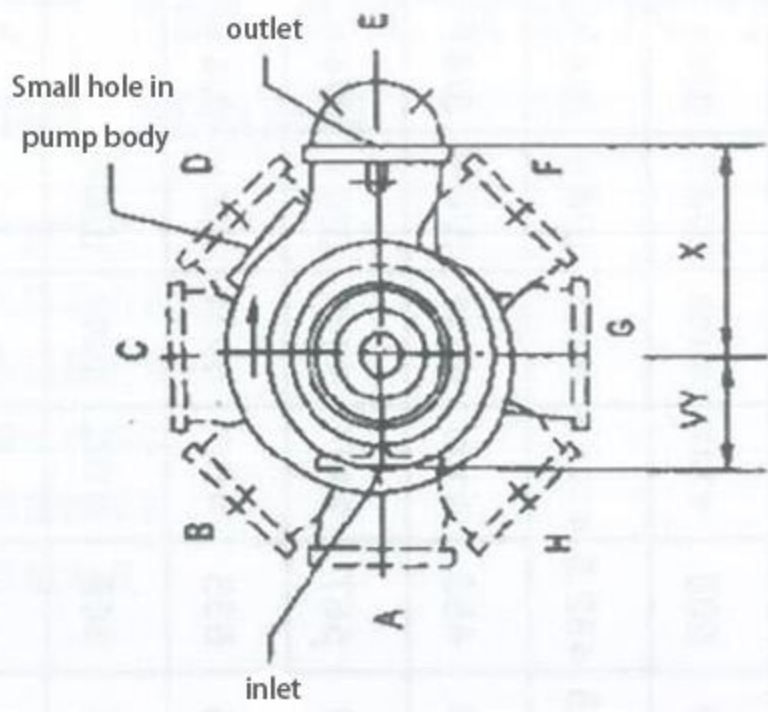
4. The pump itself is not allowed to be used as a support point for the pipeline. The connection between the pump and the pipeline does not transmit any stress or deformation, and the pump should not be used to bear the weight of the pipeline. In the pipeline near the pump There should be reliable fixing.

When installing pipelines, be careful that there is no place where air can be trapped.

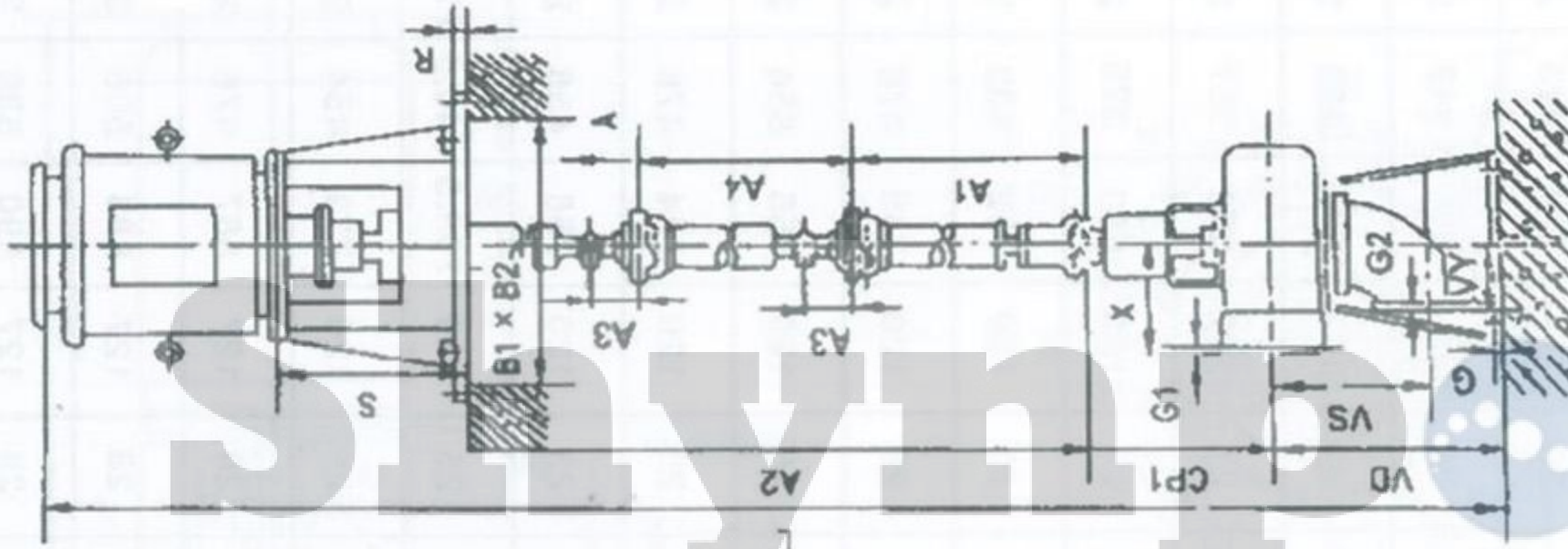
MFC type pump installation dimension table

Model	Bearing frame	Water inlet diameter	Outlet pipe diameter	A	CP ₁	CP ₂	E	G	φH	J	VD	VS	VY	X	Hand hole		Screw hole size			Weight Kg
															Pump body	Elbow	①	③	④	
3MFC-11	3A	152	80	533	512	1059	203	25	20	90	574	323	203	279	54 × 130	φ102	1/2 "	1/2 "	1/2 "	250
4MFC-9	3A	152	102	533	512	1078	203	25	20	90	566	342	203	286	80 × 131	φ102	1/2 "	1/2 "	1/2 "	260
4MFC-11	4A	203	102	660	572	1204	260	32	23	102	632	368	229	343	80 × 131	φ152	1/2 "	1/2 "	1/2 "	390
4MFC-13	5A	203	102	660	685	1315	260	32	23	102	630	357	229	406	76 × 127	φ152	3/4 "	3/4 "	3/4 "	465
6MFC-11	4A	203	152.5	660	582	1232	260	32	24	120	650	378	229	406	76 × 127	φ152	3/4 "	3/4 "	1/2 "	395
6MFC-13	5A	254	152.4	762	694	1447	305	38	26	120	752	433	279	432	76 × 127	φ152	3/4 "	3/4 "	3/4 "	600
6MFC-14	6A	203	152.4	762	811	1557	305	38	25	120	746	376	229	457	76 × 127	φ152	3/4 "	3/4 "	3/4 "	608
6MFC-16	6A	254	152	762	809	1664	305	38	26	120	855	554	279	457	76 × 127	φ152	3/4 "	3/4 "	3/4 "	710
6MFC-17	6A	254	152.4	762	809	1583	305	38	25	120	744	476	279	505	76 × 152	φ152	3/4 "	3/4 "	3/4 "	250
6MFC-18	6A	254	152	762	793.5	1551.5	305	40	23	120	758	456	279	508	φ127	φ152	3/4 "	3/4 "	3/4 "	806
8MFC-13	5A	254	203.2	762	699.5	1459	305	38	25	120	759.5	440.5	279.5	482.5	φ101.5	φ152	3/4 "	3/4 "	3/4 "	625
8MFC-14	5A	254	203.2	762	695	1468	305	38	26	120	773	454	279	483	φ102	φ152	3/4 "	3/4 "	3/4 "	575
8MFC-18	7A	254	203	902	992	1879	368	51	29	127	887	476	279	567	φ127	φ152	3/4 "	3/4 "	3/4 "	130.5
10MFC-16	6A	305	254	902	829	1712	368	51	28	127	883	506	305	635	φ127	φ203	3/4 "	3/4 "	3/4 "	995
10MFC-21	7A	305	254	902	982	1872	368	51	28	127	890	536	305	665	φ152	φ203	3/4 "	3/4 "	3/4 "	1430
10MFC-21C	7A	305	254	902	982	1872	368	51	28	127	890	536	305	665	φ146	φ203	3/4 "	3/4 "	3/4 "	1430

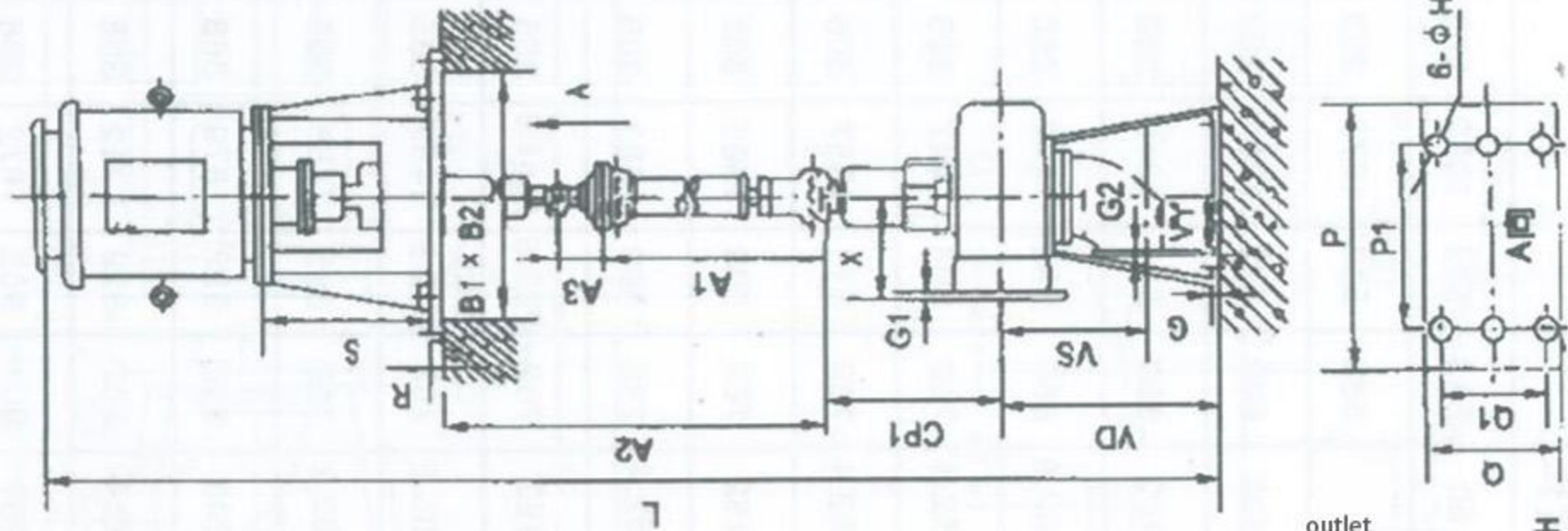
MFV type pump appearance drawing



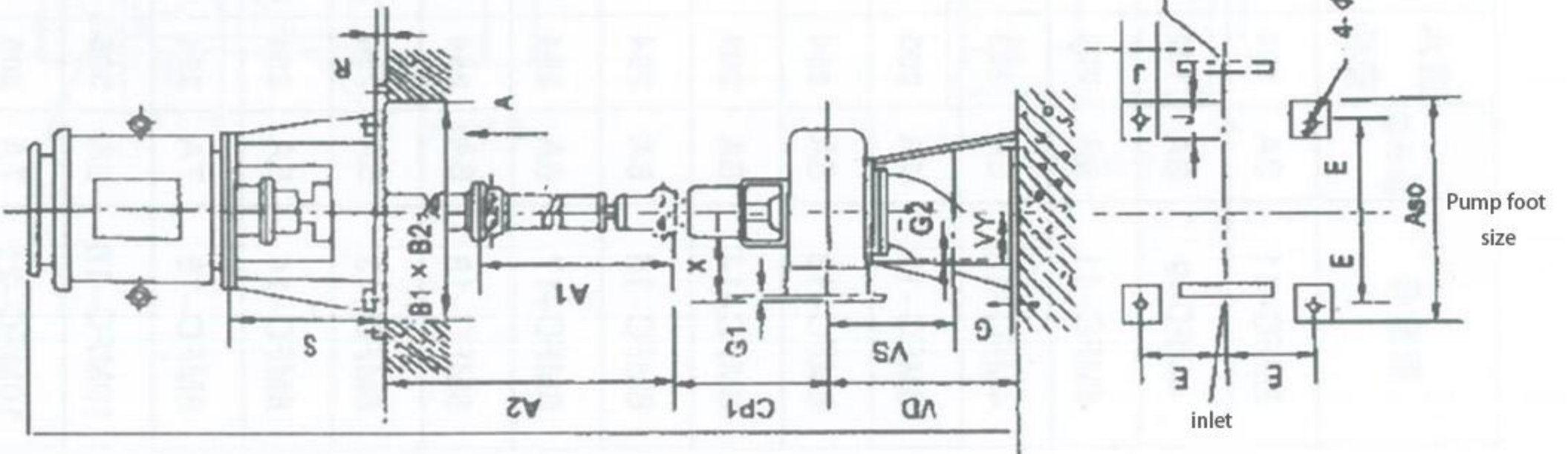
(3)



(2)



(1)

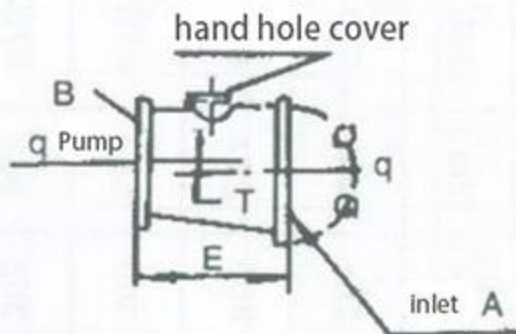
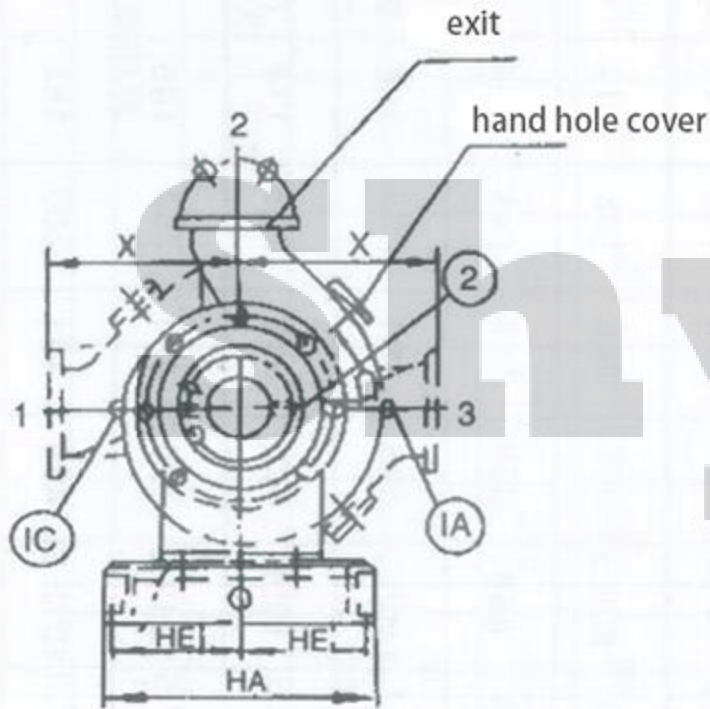
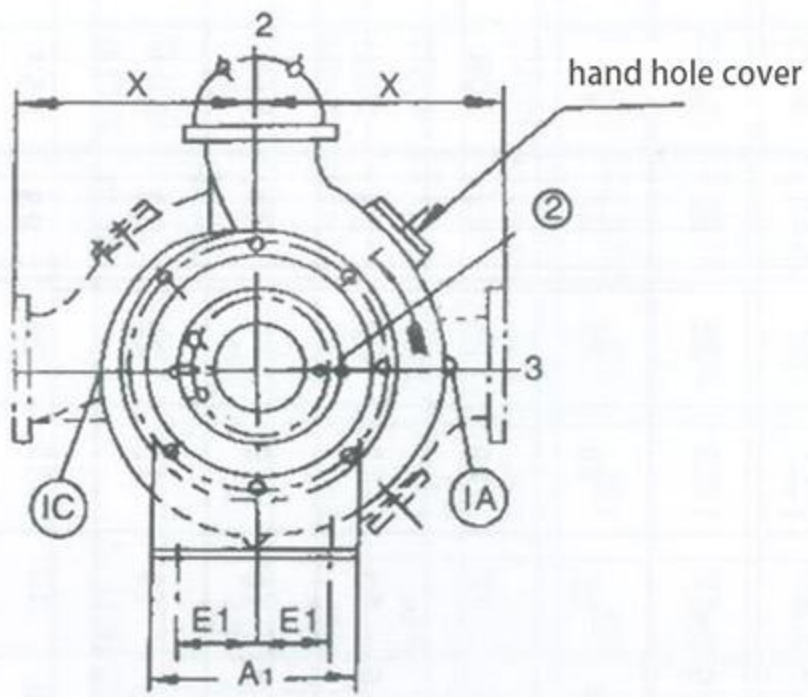


MFV type installation dimension table (1)

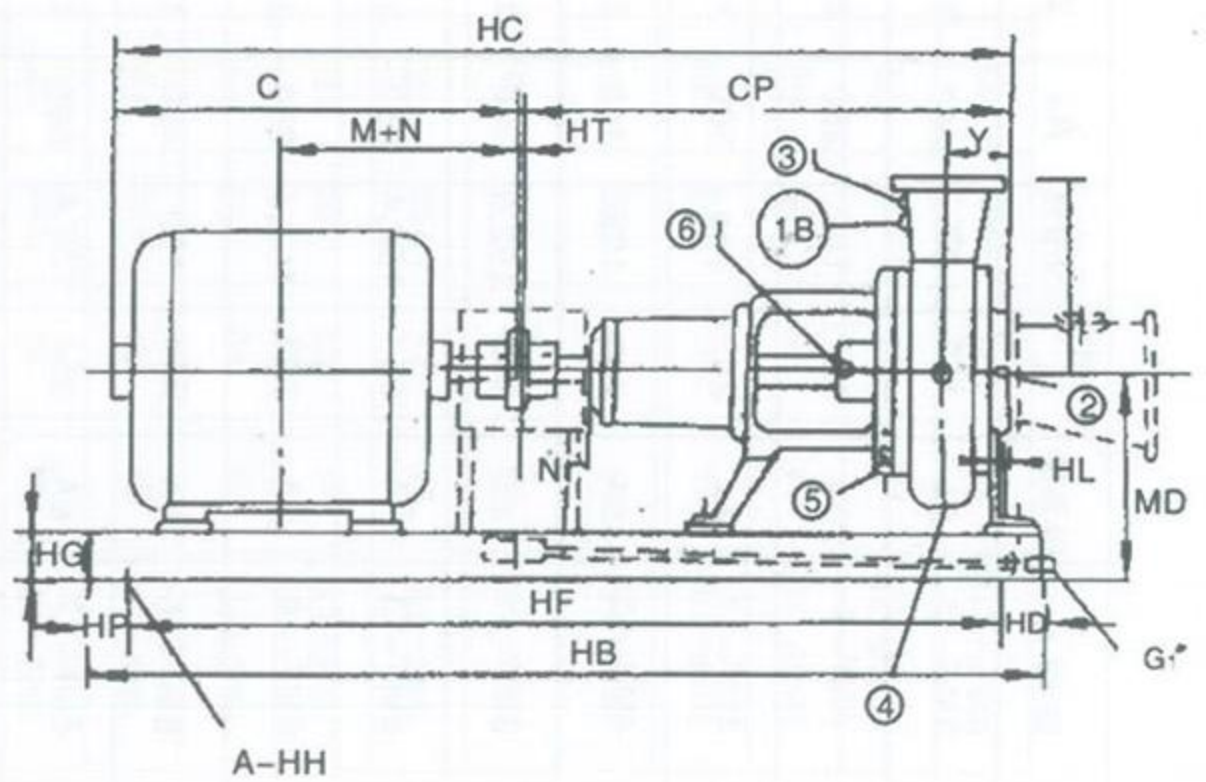
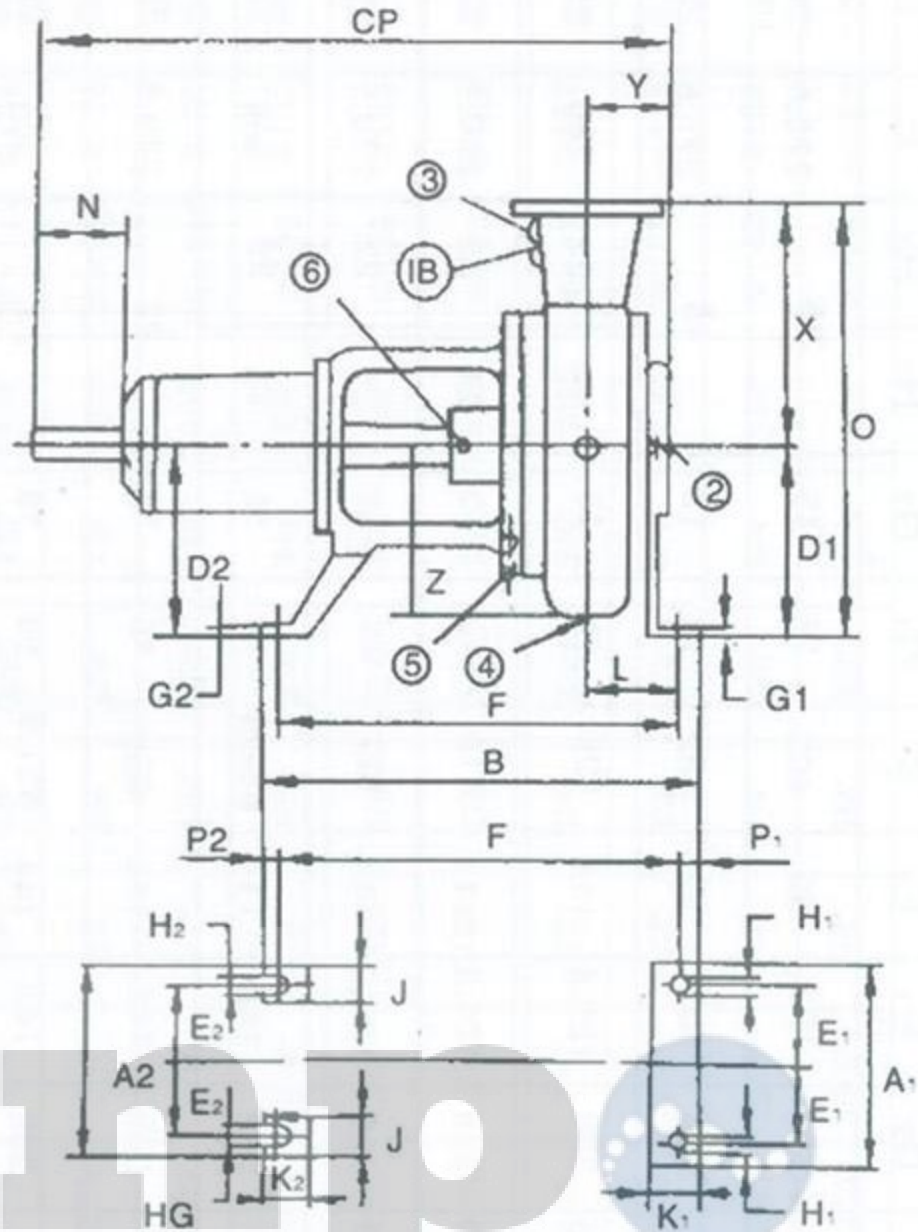
Model	Bearing frame	Water inlet diameter	Outlet pipe diameter	A	Cp ₁	Cp ₂	E	G	ΦH	J	VD	VS	VY	X	Hand hole		Screw hole size			Weight Kg
															Pump body	Elbow	①	③	④	
3MFV-11	3A	152	80	533	512	1059	203	25	20	90	547	323	203	279	51 × 127	φ 102	1/2 "	1/2 "	1/2 "	186
4MFV-9	3A	152	102	533	512	1078	203	25	20	90	566	342	203	286	76 × 127	φ 102	1/2 "	1/2 "	1/2 "	193
4MFV-11	4A	203	102	660	572	1204	260	32	23	102	631	368	229	343	76 × 127	φ 152	1/2 "	1/2 "	1/2 "	258
4MFV-13	5A	203	102	660	685	1315	260	32	22	102	631	357	229	406	76 × 127	φ 152	3/4 "	3/4 "	3/4 "	356
6MFV-11	4A	203	152.5	660	582	1232	260	32	24	120	650	378	229	406	76 × 127	φ 152	3/4 "	3/4 "	1/2 "	283
6MFV-13	5A	254	152.4	762	694	1447	305	38	26	120	752	433	279	432	76 × 127	φ 152	3/4 "	3/4 "	3/4 "	433
6MFV-14	6A	203	152.4	762	811	1557	305	38	25	120	746	376	229	457	76 × 127	φ 152	3/4 "	3/4 "	3/4 "	444
6MFV-16	6A	254	152	762	809	1664	305	38	26	120	855	554	279	457	76 × 152	φ 152	3/4 "	3/4 "	3/4 "	548
6MFV-17	6A	254	152.4	762	809	1583	305	38	25	120	744	476	279	505	76 × 125	φ 152	3/4 "	3/4 "	3/4 "	578
6MFV-18	6A	254	152	762	793.5	1551.5	305	40	23	120	758	457	279	508	φ 127	φ 152	3/4 "	3/4 "	3/4 "	591
8MFV-18	5A	254	203.2	762	699.5	1459	305	38	25	120	759.5	440.5	279.5	482.5	φ 101.5	φ 152	3/4 "	3/4 "	3/4 "	507
8MFV-14	5A	254	203	762	695	1468	305	38	26	120	773	454	279	483	φ 102	φ 152	3/4 "	3/4 "	3/4 "	507
8MFV-18	7A	254	203	902	992	1879	368	51	29	127	887	476	279	567	φ 127	φ 152	3/4 "	3/4 "	3/4 "	883
10MFV-16	6A	305	254	902	892	1712	368	51	28	127	883	506	305	635	φ 127	φ 203	3/4 "	3/4 "	3/4 "	707
10MFV-21	7A	305	254	902	982	1872	368	51	28	127	890	536	305	665	φ 152	φ 203	3/4 "	3/4 "	3/4 "	1089

Model	A2(min) - A2(max)			B ₁	B ₂	h ₁	h ₂	b	k ₁	k ₂	k ₃	k ₄	d	p	p ₁	Q	Q ₁	ΦH	S	R	Intermediate bearing number
	A ₁	A ₂	A ₃																		
3MFV-11	1000 - 4000			600	600	60	21	18×30	250	190	112	60	45	780	680	500	350	18	300	25	111309
	370-1800	130	370-1800																		
4MFV-9	1000 - 4000			600	600	60	21	18×30	250	190	112	60	45	780	680	500	350	18	300	25	111309
	370-1800	130	370-1800																		
4MFV-11	1000 - 4500			720	720	60	21	18×30	250	190	112	60	45	960	860	600	400	18	300	25	111309
	370-1800	130	370-1800																		
4MFV-13	1000 - 5000			760	760	70	24	18×30	270	212	116	70	50	960	860	600	400	23	400	30	111310
	580-1900	150	580-1900																		
6MFV-11	1000 - 4500			760	760	60	21	18×30	250	190	112	60	45	960	860	600	400	18	300	25	111309
	370-1800	130	370-1800																		
6MFV-13	1000 - 5000			850	850	70	24	18×30	270	212	116	70	50	1050	950	600	400	23	400	30	111310
	580-1900	150	580-1900																		
6MFV-14	1000 - 5500			880	880	80	33	18×30	290	230	118	85	60	1050	950	600	400	23	480	35	111312
	615-1900	180	615-1900																		
6MFV-16	1000 - 5500			880	880	80	33	18×30	290	230	118	85	60	1050	950	600	400	23	480	35	111312
	615-1900	180	615-1900			100	39	22×36	360	290	140	110	75								111315
6MFV-17	100 - 5500			950	950	80	33	18×30	290	230	118	85	60	1150	1050	600	400	23	480	35	111312
	615-1900	180	615-1900																		
6MFV-18	1000 - 5500			950	950	80	33	18×30	290	230	118	85	60	1150	1050	600	400	23	480	35	111312
	700-1900	180	700-1900			100	39	22×36	360	290	140	110	75								111315
8MFV-13	1000 - 5000			890	890	70	24	18×30	270	212	116	70	50	1050	950	600	400	23	400	30	111310
	580-1900	150	580-1900																		
8MFV-14	1000 - 5000			890	890	70	24	18×30	270	212	116	70	50	1050	950	600	400	23	400	30	111310
	580-1950	150	580-1900																		
8MFV-18	1000 - 6000			1050	1050	112	45	24×36	400	320	155	110	85	1400	1240	600	400	27	602	45	111317
	770-1950	200	770-1950																		
10MFV-16	1000 - 5500			1110	1110	80	33	18×30	290	230	118	85	60	1300	1200	600	400	23	480	35	111312
	615-1900	180	615-1900																		
10MFV-21	1000 - 6000			1140	1140	112	45	24×36	400	320	155	110	85	1400	1240	600	400	27	602	45	111317
	770-1950	200	770-1950																		

5.MF type pump appearance drawing



1. Pump body pressure gauge hole
- ① Pressure gauge hole 1
- ② Pressure gauge hole 2
- ③ Pressure gauge hole 3
2. Imported air vent
3. Exit vent
4. Pump body waterproof hole
5. Stuffing box frame waterproof hole
6. Filling seals water inlet hole



A-HH

MF type pump installation dimensions

Model	Bearing frame	Water Inlet pipe diameter A	Outlet pipe diameter	A ₁	A ₂	B	CP	D ₁	D ₂	E ₁	E ₂	F	G ₁	G ₂	H ₁	H ₂	E	T
3MF-11	3A	152	80	260	254	547.5	630	254	254	102	92	463	16	13	15		228.5	25
4MF-9	3A	152	102	260	254	566.5	649	254	254	102	92	482	16	13	15		228.5	25
4MF-11	4A	203	102	300	330	683	710.4	317.5	368	120.5	114	599	19	19	24	22	280	25
4MF-13	5A	203	102	300	330	702	812.5	317.5	368	120.5	114	618	19	19	25	22	280.5	25
6MF-11	4A	203	152.5	300	330	711	730.5	317.5	368	120.5	114	627	19	19	24	22	279.5	25
6MF-13	5A	254	152.4	350	330	736.5	847	368	368	146	114	652.5	19	19	25	22	305	25
6MF-14	6A	203	152.4	350	330	734.5	956.5	368	368	146	114	650	19	19	22		279.5	25
6MF-16	6A	254	152	350	330	735.5	1087.5	368	368	146	144	651.5	19	19	23		305	25
6MF-17	6A	254	152.4	350	330	762.5	1004	368	368	146	114	678.5	19	19	25	22	305	25
6MF-18	6A	254	152.4	350	330	730.5	968.5	368	368	146	114	646.5	19	19	25	22	305	25
8MF-13	5A	254	203.2	350	330	749	859.5	368	368	146	114	665	19	19	25	22	305	25
8MF-14	5A	254	203.2	350	330	789	868	368	368	146	114	705	19	19	25	22	305	25
8MF-18	7A	254	203	470	457	1051	1186.7	425	491	203	165	973.5	19	13	26	23	305	25
10MF-16	6A	305	254	470	330	798.5	1029	425	368	203	114	714.5	19	19	26	22	356	25
10MF-21	7A	305	254	470	457	1047.5	1212.2	425	491	203	165	966	19	13	26	23	357	25
10MF-21C	7A	305	254	470	457	1047.5	1212.2	425	491	203	165	966	19	13	26	23	357	25

MF type installation dimension table

Model	Bearing frame	J	K ₁	K ₂	L	P ₁	X	Y	Pipe thread hole link size						Pump body hand hole cover	Import pipe hand hole tube D	Pump weight Kg
									①	②	③	④	⑤	⑥			
3MF-11	3A	70	102	102	127.5	54	279	118	1/2"	1/2"	1/2"	1/2"	1/2"	1/4"	51 × 127	Φ102	157
4MF-9	3A	70	102	102	146.5	54	286	137	1/2"	1/2"	1/2"	1/2"	1/2"	1/4"	76 × 127	Φ102	171
4MF-11	4A	89	102	146	145	48	343	138.4	1/2"	1/2"	1/2"	1/2"	1/2"	1/4"	76 × 127	Φ152	286
4MF-13	5A	89	102	137	144	48	406	127	1/2"	1/2"	1/2"	1/2"	1/2"	1/4"	76 × 127	Φ152	320
6MF-11	4A	89	102	146	164	48	406	148.6	3/4"	1/2"	3/4"	3/4"	1/2"	1/4"	76 × 127	Φ152	288
6MF-13	5A	89	102	137	168	48	432	152.4	3/4"	1/2"	3/4"	3/4"	1/2"	1/4"	76 × 127	Φ152	380
6MF-14	6A	89	102	137	162	48	457	146	3/4"	1/2"	3/4"	3/4"	1/2"	1/4"	76 × 127	Φ152	443
6MF-16	6A	89	102	137	163	48	457	273	3/4"	1/2"	3/4"	3/4"	1/2"	1/4"	76 × 127	Φ152	520
6MF-17	6A	89	102	137	190	48	505	195	3/4"	1/2"	3/4"	3/4"	3/4"	1/4"	76 × 152	Φ152	547
6MF-18	6A	89	102	137	174	48	508	175	3/4"	1/2"	3/4"	3/4"	3/4"	1/4"	Φ127	Φ152	558
8MF-13	5A	89	102	137	175	48	482.5	160	3/4"	1/2"	3/4"	3/4"	3/4"	1/4"	Φ102	Φ152	487
8MF-14	5A	89	102	137	189	48	483	173	3/4"	1/2"	3/4"	3/4"	3/4"	1/4"	Φ102	Φ152	427
8MF-18	7A	120.5	102	73	211	48	567	195	3/4"	1/2"	3/4"	3/4"	3/4"	1/4"	Φ127	Φ152	814
10MF-16	6A	89	102	137	207	48	635	200	3/4"	1/2"	3/4"	3/4"	3/4"	1/4"	Φ127	Φ152	670
10MF-31	7A	120.5	102	77	214	48	665	230	3/4"	1/2"	3/4"	3/4"	3/4"	1/4"	Φ152	Φ152	1020
10MF-21C	7A	120.5	102	73	214	48	665	230	3/4"	1/2"	3/4"	3/4"	3/4"	1/4"	Φ146	Φ152	1040

MF type installation dimension table(2)

Model	Bearing frame	Motor model	Power kw	RPM r/min	HL	HA	HB	HD	HE	HG	HH	HP	HP ₁	HC
3MF-11	3A	Y160M-4	11	1470	66.5	360	1295	370	150	100	4-Φ19	152	75	1233
		Y132S-6	3	970			1295	370	150	100				1108
		Y132S-8	2.2	735			1295	370	150	100				1108
4MF-9	3A	Y160M-4	11	1470	66.5	360	1314	370	150	100	4-Φ19	152	75	1253.5
		Y132S-6	3	970			1295	370	150	100				1128.5
		Y132S-8	2.2	735			1295	370	150	100				1128.5
4MF-11	4A	Y160L-4	15	1470	76	360	1422	469	140	98	4-Φ24	152	75	1360
		Y132M ₁ -6	4	970			1270							1230
		Y132S-8	2.2	735			1270							1190
4MF-13	5A	Y200L-4	30	1470	64.5	610	1515	540	284	160	6-Φ24	152	75	1591
		Y160L-6	11	970			1220							1461
		Y160M ₁ -8	4	735			1175							1461
6MF-11	4A	Y160L-4	15	1470	68	360	1440	469	140	98	6-Φ24	152	75	1379.5
		Y132M ₂ -6	5.5	970			1300							1249.5
		Y132S-8	2.2	735			1270							1219.5
6MF-13	5A	Y200L-4	30	1470	67	610	1549	540	284	140	6-Φ24	152	75	1625.5
		Y160L-6	11	970			1466							1450.5
		Y160M ₁ -8	4	735			1422							1365.5
6MF-14	6A	Y250M-4	55	1470	66.5	610	1880	540	286	140	6-Φ23	152	75	1891
		Y200L ₁ -6	18.5	970			1702							1736
		Y160L-8	7.5	735			1702							1606

MF type installation dimension table(2)

Model	Bearing frame	Motor model	Power kw	RPM r/min	HL	HA	HB	HD	HE	HG	HH	HP	HC
6MF-16	6A	Y280S-4	75	1470	192	610	1880	540	286	140	6-Φ24	152	2090
		Y200L ₂ -6	22	970			1702						1865
		Y180L-8	11	735			1660						1800
6MF-17	6A	Y280S-6	45	970	88	660	1880	571.5	311		6-Φ24	152	2008
		Y225M-8	22	735			1750						1883
6MF-18	6A	Y315M ₁ -4	132	1470	83.5	610	2000	517.5	286		6-Φ24	152	2222.5
		Y250M-6	37	970			1800						1902.5
		Y225S-8	18.5	735			1700						1792.5
8MF-13	5A	Y225M-6	30	970	67	610	1626	571.5	284	180	6-Φ24	152	1708
		Y200L ₂ -6	22				1560						1638
		Y180L-8	11				735						1530
8MF-14	5A	Y200L ₂ -6	22	970	66.5	610	1560	571.5	286		6-Φ24	152	1647
		Y180L-8	11				735						1520
8MF-18	7A	Y315M ₂ B-4	250	1470	63.5	700	2200	685	320		6-Φ27	152	2402
		Y315M ₂ A-4	200				2402						
		Y315S-6	75	970			2140						2392
		Y280M-6	55				2090						2242
		Y250M-8	30				735						2000
10MF-16	6A	Y280S-6	45	970	73	660	1917	660	311	220	6-Φ23	152	2033
		Y225M-8	22	735			1790						1878
10MF-21	7A	Y315M ₂ -6	110	970	87	710	2200	705	322.5	200	6-Φ27	152	2467
		Y315M-6	160										2467
		Y315S-8	55	735									2417.5
		Y315M ₁ -8	75										2467
10MF-21C	7A	Y315M ₂ -6	110	970								152	2467
		Y280M-8	45	735									2090

Flange size chart

Flange size	1.0MPa cast iron flange						
Diameter of inlet and outlet pipes	80	102	127	152.5	203	254	305
Flange outer diameter	200	228.5	254	279.5	343	406	483
Flange thickness	19	24	24	25.4	28.5	30	32
Number of bolts	8	8	8	8	8	12	12
Bolt diameter	M16	M16	M20	M20	M20	M20	M20
Screw hole diameter	18	18	23	23	23	23	23
Screw hole center diameter (American)	152	190.5	216	241	298.5	362	430
Screw hole center diameter (Chinese)	160	180	210	240	295	350	400