

Overall Dimension Table

| Pump Type | A | B | C | D | E | F | G | H | J | K | M | N | V | V1 | V2 | W |
|-----------------|--------|------|-----|------|------|------|-----|------|------|------|-----|------|------|-----|-----|------|
| NL0150-250 | 2486.5 | 1076 | 50 | 500 | 380 | 470 | 240 | 3330 | 426 | 526 | 300 | 270 | 800 | 300 | 300 | 800 |
| NL0150-220 | 2486.5 | 1076 | 50 | 500 | 380 | 470 | 240 | 3330 | 426 | 526 | 300 | 270 | 800 | 300 | 300 | 800 |
| NL0200-250 | 3800 | 1575 | 150 | 600 | 600 | 320 | 320 | 4400 | 690 | 790 | | | | | | |
| NL0200-300 | 3000 | 1537 | 150 | 600 | 600 | 320 | 320 | 3600 | 650 | 750 | | | | | | |
| NL0200-320 | 3500 | 1537 | 150 | 600 | 600 | 320 | 320 | 4100 | 650 | 750 | | | | | | |
| NL0200-360 | 2550 | 1534 | 150 | 600 | 600 | 320 | 320 | 3165 | 690 | 790 | | | | | | |
| NL0250-370 | 3000 | 1646 | 40 | 550 | 510 | 700 | 345 | 4300 | 700 | 750 | 450 | 680 | 1000 | 450 | 450 | 1000 |
| NL0250-370(I) | 3000 | 1646 | 40 | 550 | 510 | 700 | 345 | 4300 | 700 | 750 | 450 | 680 | 1000 | 450 | 450 | 1000 |
| NL0300-400 | 4298 | 1477 | 40 | 533 | 510 | 700 | 345 | 5633 | 762 | 800 | 450 | 700 | 1000 | 450 | 450 | 1000 |
| NL0350-400(I) | 4055 | 1484 | 50 | 970 | 648 | 955 | 425 | 5625 | 762 | 820 | 700 | 700 | 1400 | 700 | 700 | 1500 |
| NL0350-430 | 4500 | 1484 | 50 | 970 | 648 | 955 | 425 | 6070 | 762 | 820 | 700 | 700 | 1400 | 700 | 700 | 1500 |
| NL0400-500 | 5400 | 1882 | 160 | 850 | 850 | 800 | 600 | 6850 | 1220 | 1300 | 935 | 1200 | 1700 | 635 | 935 | 2000 |
| NL0500-570 | 6000 | 1882 | 160 | 850 | 850 | 1400 | 600 | 8050 | 1300 | 1400 | 935 | 1200 | 1700 | 635 | 935 | 2000 |
| NL0500-600 | 7100 | 2264 | 160 | 1250 | 1050 | 900 | 800 | 8715 | 1300 | 1400 | 935 | 1200 | 1700 | 635 | 935 | 2000 |

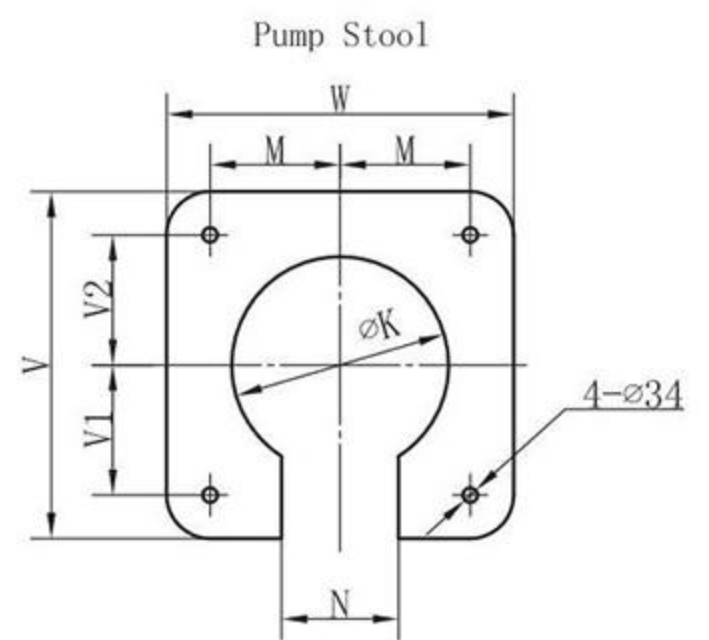
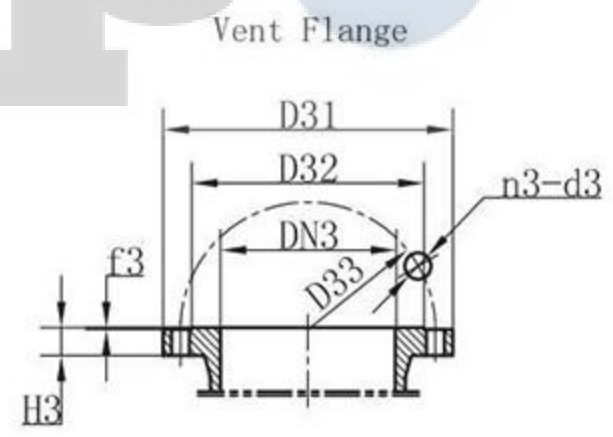
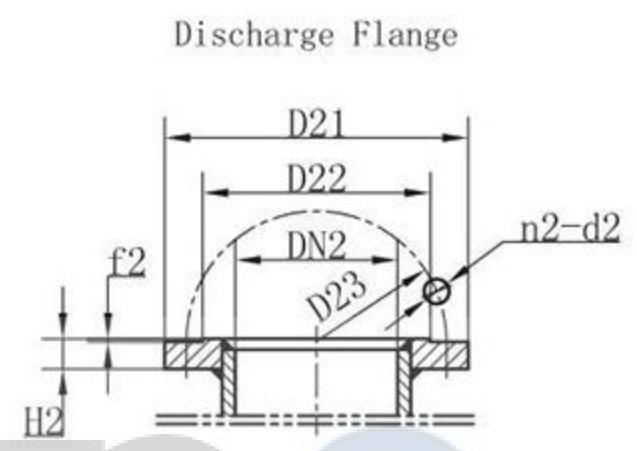
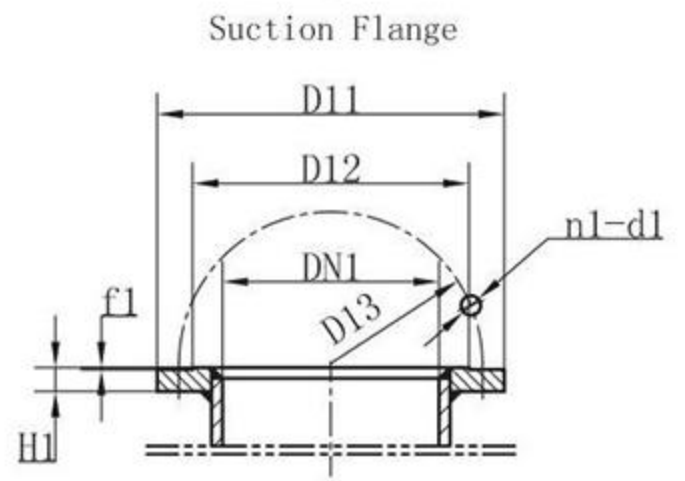
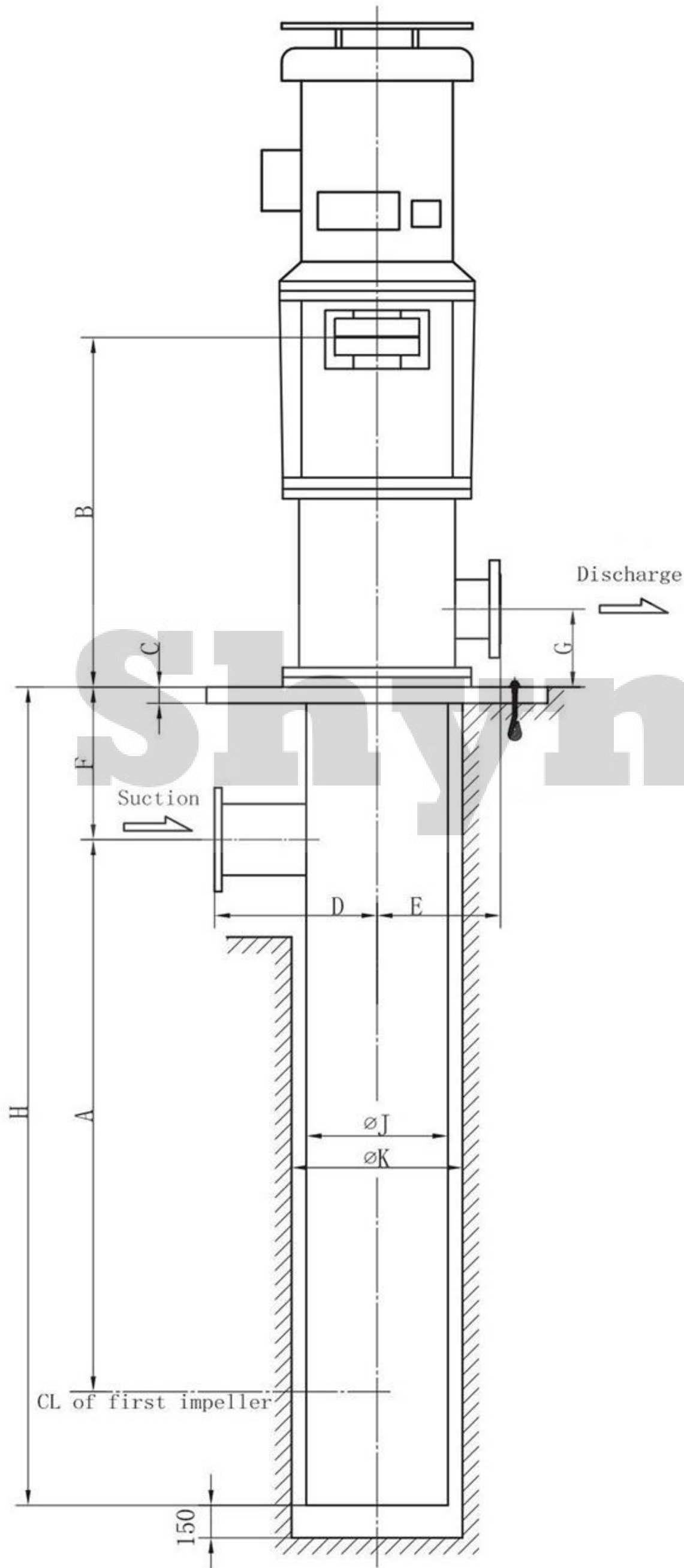
The overall dimension is for reference, which will be provided with project drawing.

Overall Dimension Table (Suction, Discharge and Vent Flange)

| Flange Size Pump Type | Suction Flange | | | | | | | | Discharge Flange | | | | | | | | Vent Flange | | | | | | | |
|--------------------------|----------------|------|------|-----|----|----|----|-------|------------------|-------|-------|-------|-------|-----|----|------|-------------|-----|-------|-----|------|-----|----|------|
| | D11 | D12 | D13 | DN1 | H1 | f1 | n1 | d1 | D21 | D22 | D23 | DN2 | H2 | f2 | n2 | d2 | D31 | D32 | D33 | DN3 | H3 | f3 | n3 | d3 |
| NL0150-250 | 320 | 255 | 280 | 200 | 22 | 2 | 8 | 18 | 300 | 211 | 250 | 150 | 34 | 3 | 8 | 26 | 100 | 58 | 75 | 25 | 16 | 2 | 4 | 12 |
| NL0150-220 | 320 | 255 | 280 | 200 | 22 | 2 | 8 | 18 | 300 | 211 | 250 | 150 | 34 | 3 | 8 | 26 | 100 | 58 | 75 | 25 | 16 | 2 | 4 | 12 |
| NL0200-250 | 405 | 319 | 355 | 250 | 32 | 4 | 12 | 26 | 375 | 284 | 320 | 200 | 36 | 3 | 12 | 30 | 165 | 99 | 125 | 50 | 20 | 3 | 4 | 18 |
| NL0200-300 | 405 | 319 | 355 | 250 | 32 | 4 | 12 | 26 | 375 | 284 | 320 | 200 | 36 | 3 | 12 | 30 | 165 | 99 | 125 | 50 | 20 | 3 | 4 | 18 |
| NL0200-320 | 460 | 370 | 410 | 300 | 32 | 4 | 12 | 26 | 375 | 284 | 320 | 200 | 36 | 3 | 12 | 30 | 165 | 99 | 125 | 50 | 20 | 3 | 4 | 18 |
| NL0200-360 | 460 | 370 | 410 | 300 | 32 | 4 | 12 | 26 | 375 | 284 | 320 | 200 | 36 | 3 | 12 | 30 | 165 | 99 | 125 | 50 | 20 | 3 | 4 | 18 |
| NL0250-370 | 520 | 429 | 470 | 350 | 35 | 4 | 16 | 26 | 450 | 345 | 385 | 250 | 42 | 3 | 12 | 33 | 165 | 99 | 125 | 50 | 20 | 3 | 4 | 18 |
| NL0250-370(I) | 520 | 429 | 470 | 350 | 35 | 4 | 16 | 26 | 450 | 345 | 385 | 250 | 42 | 3 | 12 | 33 | 165 | 99 | 125 | 50 | 20 | 3 | 4 | 18 |
| NL0300-400 | 540 | 465 | 495 | 400 | 28 | 2 | 16 | 22 | 515 | 410 | 450 | 300 | 48 | 4 | 16 | 33 | 165 | 99 | 125 | 50 | 20 | 3 | 4 | 18 |
| NL0350-400(I) | 755 | 667 | 705 | 600 | 36 | 2 | 20 | 26 | 580 | 465 | 510 | 350 | 56 | 4 | 16 | 36 | 165 | 99 | 125 | 50 | 20 | 3 | 4 | 18 |
| NL0350-430 | 755 | 667 | 705 | 600 | 36 | 2 | 20 | 26 | 580 | 465 | 510 | 350 | 56 | 4 | 16 | 36 | 165 | 99 | 125 | 50 | 20 | 3 | 4 | 18 |
| NL0400-500 | 910 | 794 | 840 | 700 | 38 | 5 | 24 | 36 | 650 | 469.9 | 571.5 | 400 | 83 | 2 | 20 | 36 | 200 | 132 | 160 | 80 | 20 | 3 | 8 | 18 |
| NL0500-570 | 1025 | 901 | 950 | 800 | 42 | 5 | 24 | 40 | 775 | 584.5 | 686 | 500 | 84 | 4 | 24 | 36 | 200 | 132 | 160 | 80 | 20 | 3 | 8 | 18 |
| NL0500-600×3S | 1115 | 1001 | 1050 | 890 | 48 | 5 | 28 | 33 | 775 | 584.2 | 686 | 500 | 95 | 2 | 24 | 36 | 200 | 132 | 160 | 80 | 20 | 3 | 8 | 18 |
| NL0500-600×4S | 1168 | 1086 | 1022 | 890 | 90 | 3 | 32 | 42.75 | 857.2 | 584.6 | 686 | 749.3 | 114.3 | 6.4 | 20 | 53.8 | 190.5 | 127 | 152.4 | 70 | 23.9 | 1.6 | 4 | 19.1 |

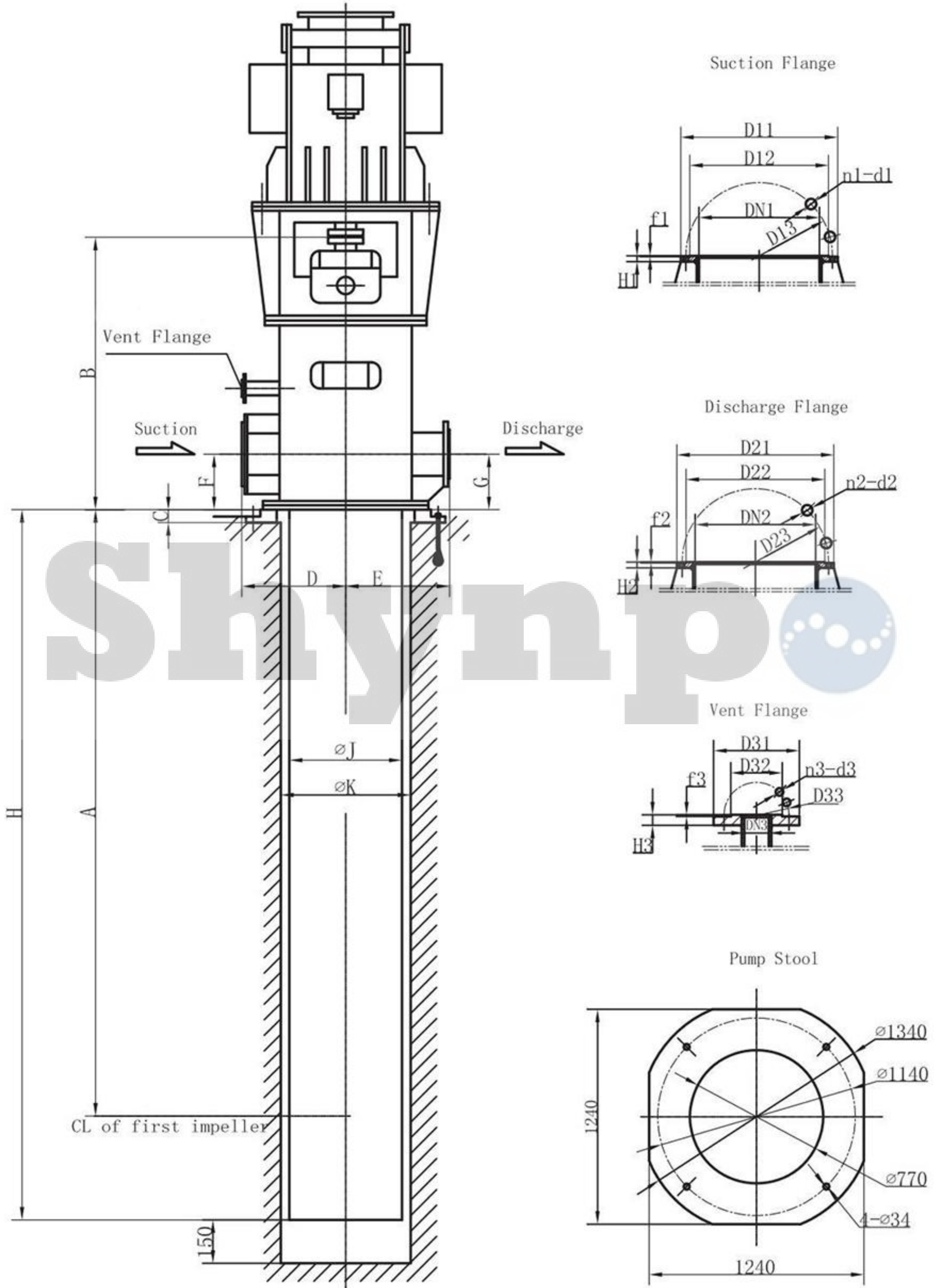
The overall dimension is for reference, which will be provided with project drawing.

Overall Dimension Drawing
 NL0150-250, NL0150-220



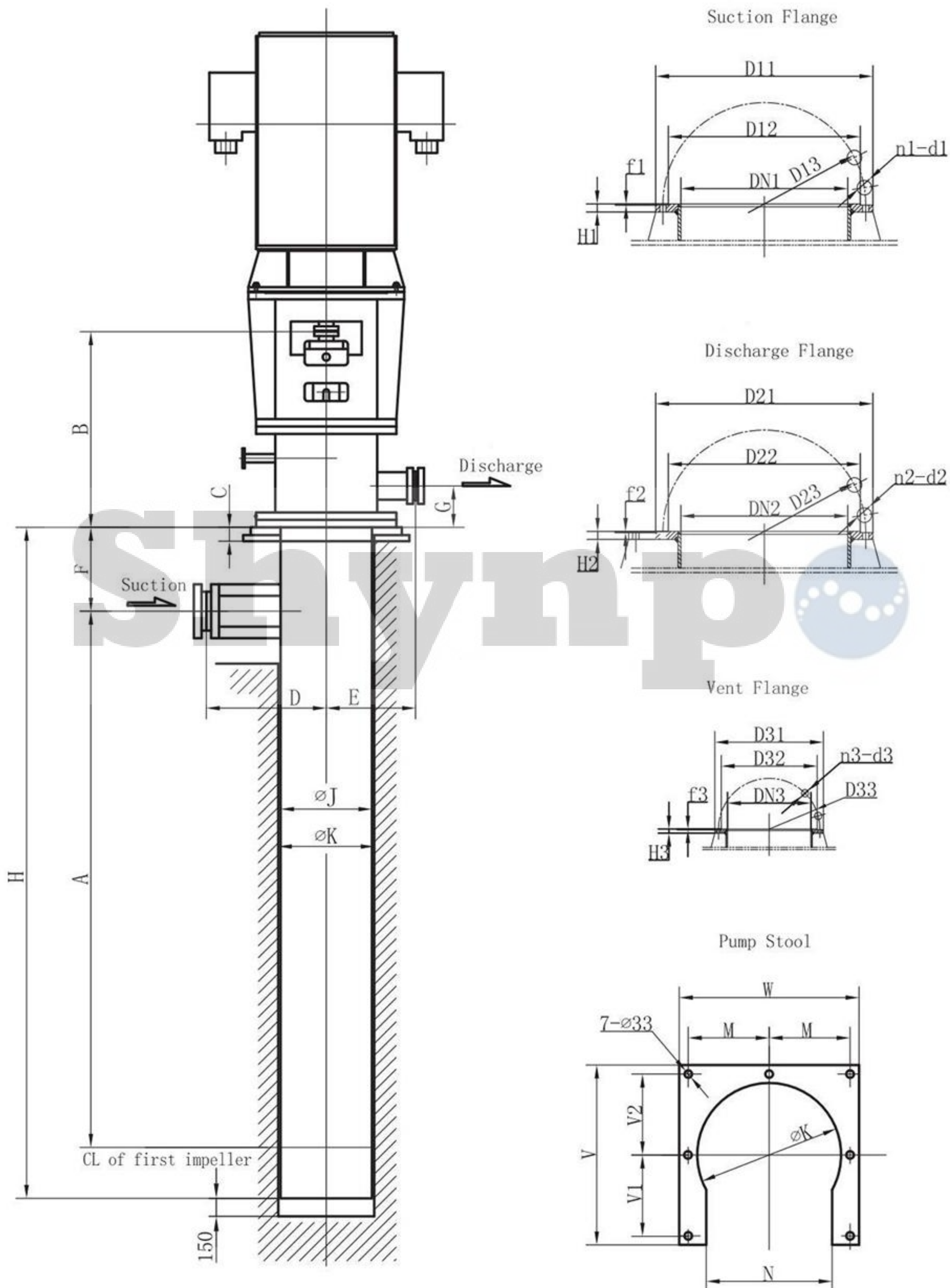
Overall Dimension Drawing

NL0200-250, NL0200-300, NL0200-320, NL0200-360



Overall Dimension Drawing

NL0250-370, NL0250-370 (I), NL0300-400, NL0350-400 (I), NL0350-430



Overall Dimension Drawing
 NL0400-500, NL0500-570, NL0500-600

