

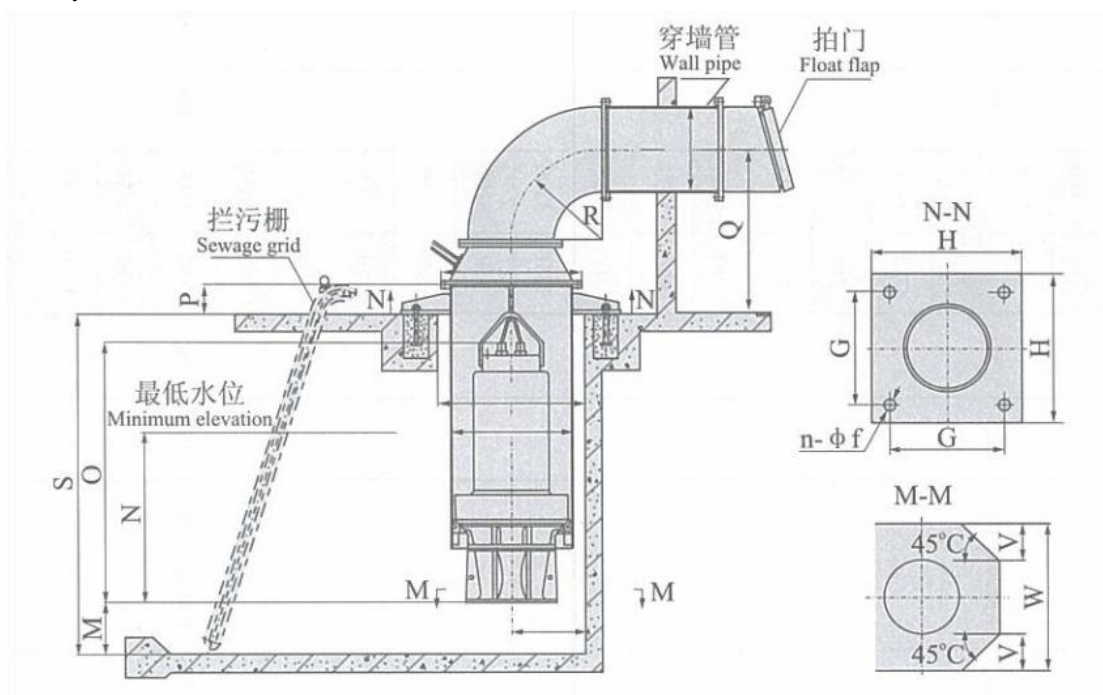
## QZ, QH series pump installation form and size

The smaller QZ series submersible axial flow pump and QH series submersible mixed flow pump adopt open water intake, and the installation forms are suspended installation, steel well simple installation, and concrete precast well simple installation. Suspension installation, steel shaft simple installation by the company to provide a complete set of shaft, concrete precast shaft simple installation by the company to provide installation base (including anti-rotating device), well cover device.

During installation, the submersible pump is hoisted into the bottom of the wellbore cover, and the inclined plane on the guide vane body is matched with the inclined plane of the support, and the water sealing rubber (O-shaped ring) plays a sealing role.

Larger submersible pumps (generally impeller diameter of more than 1 meter), using a closed inlet channel installation form.

### 1, suspension installation



Note: ① The dimensions in the table are the installation size of the pump and the hydraulic control size designed by the pump station, among which the hydraulic size designed by the pump station is the reference value.

② Size A is determined according to the pump flow rate to control the flow rate and reduce hydraulic loss. The size in the table is a reference value. If necessary, it can be appropriately increased; Size S and Q are determined according to the specific conditions of the pumping station; Size R is the minimum reference size and can be increased appropriately if conditions permit. The above dimensions are determined according to user requirements.

③ The distance between the center of the pump and the rear pool wall is not greater than size T.

④ The center distance between two pumps in the same pool is not less than size Z.

# QZ, QH series pump suspension mounting size table

表(一) Table(1)

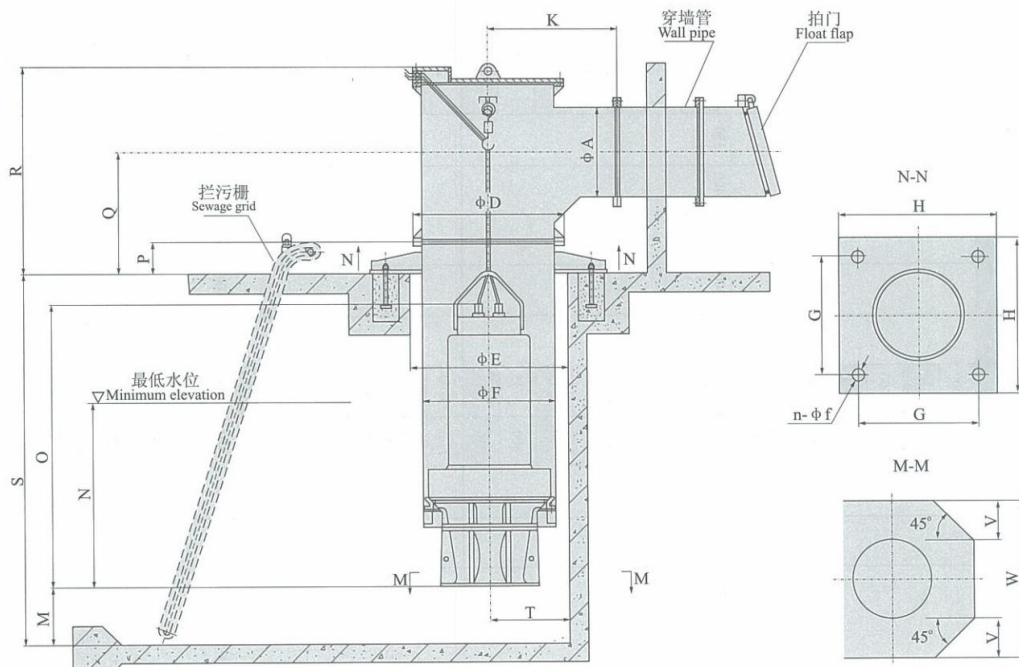
序号 No.	型号 Type	φA	φD	φE	φF	G	H	n-φf	R	M	N	O	P	Z	T	W	V	泵重 Pump weight (kg)	轴向水推力 (N)
1	350QH-35G	400 或 500	755	800	600	1150	1350	4-M24×400	525	290	900	2600	200	1400	360	1400	350	2450	15600
2	350QH-35D										710	1810						1000	7100
3	350QH-40G										820	2600						2480	14800
4	350QH-40D										710	1810						970	6800
5	350QH-72G										710	2300						970	7600
6	350QH-72D										710	1750						850	3500
7	350QH-50G										710	2360						950	8200
8	350QH-50D										710	1733						650	3700
9	350QH-75G										720	2300						950	6800
10	350QH-75D										710	1733						650	3100
11	350QH-100G										710	1733						650	5500
12	350QH-100D										710	1733						650	2500
13	350QH-135G										800	1733						650	4800
14	350QH-135D										710	1733						650	2200
15	500QH-35G	600 或 700	975	1050	800	1350	1600	4-M30×400	750	430	1310	3200	200	1800	540	1800	450	2000	36100
16	500QH-35D										810	3100						1800	20600
17	500QH-40G										1240	3100						1800	34200
18	500QH-40D										810	3000						1300	19500
19	500QH-72G										1010	2850						1200	17600
20	500QH-72D										810	2615						920	10000
21	500QZ-50G										810	3100						1200	19000
22	500QZ-50D										810	2900						900	10800
23	500QZ-75G										1120	2553						880	15700
24	500QZ-75D										810	2013						920	8900
25	500QZ-100G										810	2080						970	12700
26	500QZ-100D										810	2013						800	7200
27	500QZ-135G										1200	2080						970	11000

表(二) Table(2)

号 D.	型号 Type	φA	φD	φE	φF	G	H	n-φf	R	M	N	O	P	Z	T	W	V	泵重 Pump weight (kg)	轴向水推力 (N)
8	500QZ-135D	600或 700	975	1050	800	1350	1600	4-M30×400	750	430	810	2015	200	1800	540	1800	450	800	6300
9	600QH-35	700 或 800	1175	1225	1000	1600	1850	4-M30×500	900	530	880	3200	220	2200	660	2200	550	2900	45900
0	600QH-40										880	3200						2800	43500
1	600QH-72										880	2900						2600	22400
2	600QZ-50										880	2900						2600	24100
3	600QZ-75										880	2570						2100	19900
4	600QZ-100										880	2570						2100	16100
5	600QZ-135										880	2570						2100	14000
16	700QH-35	800 或 900	1305	1365	1100	1700	2000	4-M36×500	1050	580	1590	3800	220	2400	720	2400	600	3300	65000
17	700QH-40										1510	3800						3300	61600
18	700QH-72										1280	3100						2900	31700
19	700QZ-50										960	2900						2900	34200
20	700QZ-75										1400	2850						2500	28300
21	700QZ-100										960	2570						2300	22900
22	700QZ-135										1480	2570						2300	19900
23	700QZ-160	1100	2570	2200	13900														
44	800QH-35	900 或 1000	1405	1450	1200	1900	2150	4-M36×500	1200	670	1120	4200	260	2800	840	2800	700	4100	76600
45	800QH-40										1120	4200						4100	72600
46	800QH-72										1120	3100						3900	37400
47	800QZ-50										1120	3100						3900	40200
48	800QZ-75										1120	2900						3500	33300
49	800QZ-100										1120	2900						2850	26900
50	800QZ-135										1120	2900						2850	23400
51	800QZ-160	1120	2900	2700	16400														
52	900QH-35H	1000 或 1100	1520	1600	1300	2000	2250	4-M36×500	1350	820	1710	4400	300	3400	1020	3400	850	6500	129600
53	900QH-35D										1360	4600						7000	114800
54	900QH-40G										1640	4500						6500	122900

序号 No.	型号 Type	$\phi A$	$\phi D$	$\phi E$	$\phi F$	G	H	n- $\phi f$	R	M	N	O	P	Z	T	W	V	泵重 Pump weight (kg)	轴向往水推力 (N)														
55	900QH-40D	1000 或 1100	1520	1600	1300	2000	2250	4-M36×500	1350	820	1360	4600	300	3400	1020	3400	850	6500	108900														
56	900QH-72G										1410	3700						5500	63300														
57	900QH-72D										1360	3800						5500	56100														
58	900QZ-50G										1360	3900						5500	68100														
59	900QZ-50D										1360	4000						5500	60300														
60	900QZ-75G										1520	3600						5000	56300														
61	900QZ-75D										1360	3700						5000	49900														
62	900QZ-100G										1360	3370						5000	45600														
63	900QZ-100D										1360	3500						5000	40400														
64	900QZ-135G										1600	3000						4500	39600														
65	900QZ-135D										1360	3100						5000	35100														
66	900QZ-160G										1360	3000						4500	27800														
67	900QZ-160D										1360	3100						4500	24600														
68	1000QH-35										1200	1630						1700	1400	2050	2300	4-M36×500	1500	840	1390	4900	300	3480	1040	34800	870	8000	126000
69	1000QH-40	1390	4900	8000	119500																												
70	1000QH-72	1390	4200	7000	61500																												
71	1000QZ-50	1390	4200	7000	66200																												
72	1000QZ-75	1390	3900	6200	54800																												
73	1000QZ-100	1390	3300	5200	44300																												
74	1000QZ-135	1390	3300	5200	38500																												
75	1000QZ-160	1390	3300	5200	27000																												
76	1200QH-72	1400	1830	19600	1600	2200	2500	4-M36×500	1800	910			2630	4600	300	3800	1140								3800	950						8000	87500
77	1200QZ-50												2080	4600																		8000	94100
78	1200QZ-75										2740	4300	7500	77800																			
79	1200QZ-100										1520	3800	6000	63000																			
80	1200QZ-135										2830	3800	6000	54700																			
81	1200QZ-160										2410	3800	6000	38400																			

## 2, steel shaft installation



Note: ① The dimensions in the table are the installation size of the pump and the hydraulic control size designed by the pump station, among which the hydraulic size designed by the pump station is the reference value.

② Size A is determined according to the pump flow rate to control the flow rate and reduce hydraulic loss. The size in the table is a reference value. If necessary, it can be appropriately increased; Dimensions S, Q, R are determined according to the specific conditions of the pumping station, and the above dimensions are determined according to user requirements.

③ The distance between the center of the pump and the rear pool wall is not greater than size T.

④ The center distance between two pumps in the same pool is not less than size Z.

表(一) table(1)

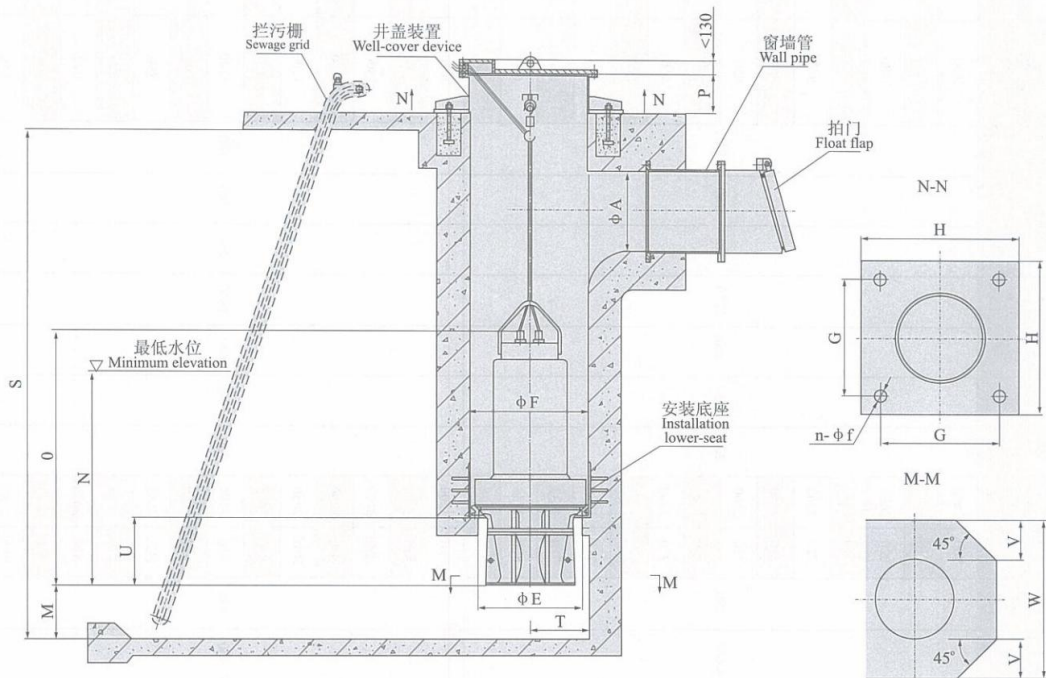
序号 No.	型号 Type	φA	φD	φE	φF	G	H	n-φf	R	M	N	O	P	Z	T	W	V	泵重 Pump weight (kg)	轴向水推力 (N)
1	350QH-35G	400 或 500	755	800	600	1150	1350	4-M24×400	525	290	900	2600	200	1400	360	1400	350	2450	15600
2	350QH-35D										710	1810						1000	7100
3	350QH-40G										820	2600						2480	14800
4	350QH-40D										710	1810						970	6800
5	350QH-72G										710	2300						970	7600
6	350QH-72D										710	1750						850	3500
7	350QH-50G										710	2360						950	8200
8	350QH-50D										710	1733						650	3700
9	350QH-75G										720	2300						950	6800
10	350QH-75D										710	1733						650	3100
11	350QH-100G										710	1733						650	5500
12	350QH-100D										710	1733						650	2500
13	350QH-135G										800	1733						650	4800
14	350QH-135D										710	1733						650	2200
15	500QH-35G	600 或 700	975	1050	800	1350	1600	4-M30×400	750	430	1310	3200	200	1800	540	1800	450	2000	36100
16	500QH-35D										810	3100						1800	20600
17	500QH-40G										1240	3100						1800	34200
18	500QH-40D										810	3000						1300	19500
19	500QH-72G										1010	2850						1200	17600
20	500QH-72D										810	2615						920	10000
21	500QZ-50G										810	3100						1200	19000
22	500QZ-50D										810	2900						900	10800
23	500QZ-75G										1120	2553						880	15700
24	500QZ-75D										810	2013						920	8900
25	500QZ-100G										810	2080						970	12700
26	500QZ-100D										810	2013						800	7200
27	500QZ-135G										1200	2080						970	11000

型号 Type	φA	φD	φE	φF	G	H	n-φf	R	M	N	O	P	Z	T	W	V	泵重 Pump weight (kg)	轴向往水推力 (N)
500QZ-135D	600或700	975	1050	800	1350	1600	4-M30×400	900	430	810	2015	200	1800	540	1800	450	800	6300
600QH-35	700 或 800	1175	1225	1000	1600	1850	4-M30×500	1000	530	880	3200	220	2200	660	2200	550	2900	45900
600QH-40										880	3200						2800	43500
600QH-72										880	2900						2600	22400
600QZ-50										880	2900						2600	24100
600QZ-75										880	2570						2100	19900
600QZ-100										880	2570						2100	16100
600QZ-135										880	2570						2100	14000
700QH-35										800 或 900	1305						1365	1100
700QH-40	1510	3800	3300	61600														
700QH-72	1280	3100	2900	31700														
700QZ-50	960	2900	2900	34200														
700QZ-75	1400	2850	2500	28300														
700QZ-100	960	2570	2300	22900														
700QZ-135	1480	2570	2300	19900														
700QZ-160	1100	2570	2200	13900														
800QH-35	900 或 1000	1405	1450	1200	1900	2150	4-M36×500	1100	670	1120	4200	260	2800	840	2800	700	4100	76600
800QH-40										1120	4200						4100	72600
800QH-72										1120	3100						3900	37400
800QZ-50										1120	3100						3900	40200
800QZ-75										1120	2900						3500	33300
800QZ-100										1120	2900						2850	26900
800QZ-135										1120	2900						2850	23400
800QZ-160										1120	2900						2700	16400
900QH-35G	1000 或 1100	1520	1600	1300	2000	2250	4-M36×500	1200	820	1710	4400	300	3400	1020	3400	850	6500	129600
900QH-35D										1360	4600						7000	114800
900QH-40G										1640	4500						6500	122900

表(二) / Table(2)

序号 No.	型号 Type	φA	φD	φE	φF	G	H	n-φf	R	M	N	O	P	Z	T	W	V	泵重 Pump weight (kg)	轴向水推力 (N)														
55	900QH-40D	1000 或 1100	1520	1600	1300	2000	2250	4-M36×500	1200	820	1360	4600	300	3400	1020	3400	850	6500	108900														
56	900QH-72G										1410	3700						5500	63300														
57	900QH-72D										1360	3800						5500	56100														
58	900QZ-50G										1360	3900						5500	68100														
59	900QZ-50D										1360	4000						5500	60300														
60	900QZ-75G										1520	3600						5000	56300														
61	900QZ-75D										1360	3700						5000	49900														
62	900QZ-100G										1360	3370						5000	45600														
63	900QZ-100D										1360	3500						5000	40400														
64	900QZ-135G										1600	3000						4500	39600														
65	900QZ-135D	1360	3100	5000	35100																												
66	900QZ-160G	1360	3000	4500	27800																												
67	900QZ-160D	1360	3100	4500	24600																												
68	1000QH-35	1200	1630	1700	1400	2050	2300	4-M36×500	1300	840	1390	4900	300	3480	1040	3480	870	8000	126000														
69	1000QH-40										1390	4900						8000	119500														
70	1000QH-72										1390	4200						7000	61500														
71	1000QZ-50										1390	4200						7000	66200														
72	1000QZ-75										1390	3900						6200	54800														
73	1000QZ-100										1390	3300						5200	44300														
74	1000QZ-135										1390	3300						5200	38500														
75	1000QZ-160										1390	3300						5200	27000														
76	1200QH-72										1400	1830						1900	1600	2200	2500	4-M36×500	1500	910	2630	4600	300	3800	1140	3800	950	8000	87500
77	1200QZ-50																								2080	4600						8000	94100
78	1200QZ-75	2740	4300	7500	77800																												
79	1200QZ-100	1520	3800	6000	63000																												
80	1200QZ-135	2830	3800	6000	54700																												
81	1200QZ-160	2410	3800	6000	38400																												

### 3, concrete prefabricated shaft installation



Note: ① The dimensions in the table are the installation size of the pump and the hydraulic control size designed by the pump station, among which the hydraulic size designed by the pump station is the reference value.

② Size A is determined according to the pump flow to control the flow rate and reduce the hydraulic loss. The size in the table is a reference value, and can be appropriately increased if necessary: size S is determined according to the specific conditions of the pump station. The above dimensions are determined according to user requirements.

③ The distance between the center of the pump and the rear pool wall is not greater than size T.

④ The center distance between two pumps in the same pool is not less than size Z.

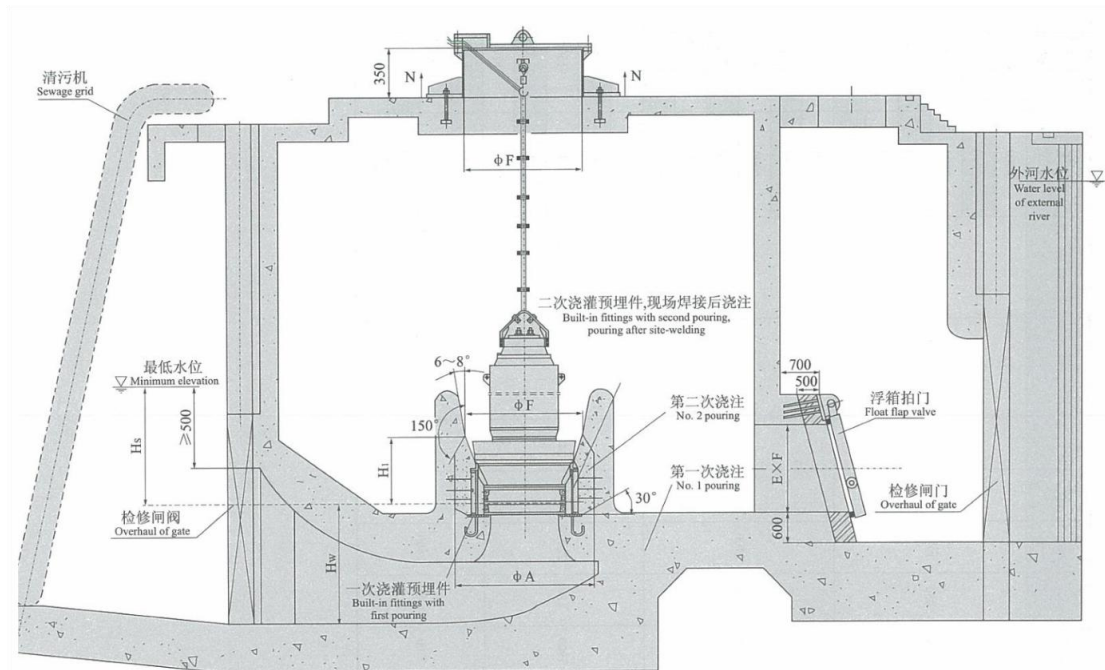
序号 No.	型号 Type	φA	φF	G	H	n-φf	M	N	O	P	Z	T	W	V	U	φY	泵重 Pump weight (kg)	轴向水推力 (N)
1	350QH-35G	400或500	600	1000	1200	4-M24×400	290	900	2600	200	1250	360	1250	312	360	500	2450	15600
2	350QH-35D							1000	7100									
3	350QH-40G							2480	14800									
4	350QH-40D							970	6800									
5	350QH-72G							970	7600									
6	350QH-72D							850	3500									
7	350QZ-50G							950	8200									
8	350QZ-50D							650	3700									
9	350QZ-75G							950	6800									
10	350QZ-75D							650	3100									
11	350QZ-100G							650	5500									
12	350QZ-100D							650	2500									
13	350QZ-135G							650	4800									
14	350QZ-135D							650	2200									
15	500QH-35G	600或700	800	1150	1400	4-M30×400	430	1310	3200	200	1800	540	1800	450	540	680	2000	36100
16	500QH-35D							1800	20600									
17	500QH-40G							1800	34200									
18	500QH-40D							1300	19500									
19	500QH-72G							1200	17600									
20	500QH-72D							920	10000									
21	500QZ-50G							1200	19000									
22	500QZ-50D							900	10800									
23	500QZ-75G							880	15700									
24	500QZ-75D							920	8900									
25	500QZ-100G							970	12700									
26	500QZ-100D							800	7200									
27	500QZ-135G							970	11000									

号	型号 Type	φA	φF	G	H	n-φf	M	N	O	P	Z	T	W	V	U	φY	泵重 Pump weight (kg)	轴向水推力 (N)
	500QZ-135D	600或700	800	1150	1400	4-M30×400	430	810	2015	200	1800	540	1800	450	540	680	800	6300
	600QH-35	700或800	1000	1300	1550	4-M30×500	530	880	3200	220	2200	660	2200	550	660	880	2900	45900
	600QH-40							880	3200								2800	43500
	600QH-72							880	2900								2600	22400
	600QZ-50							880	2900								2600	24100
	600QZ-75							880	2570								2100	19900
	600QZ-100							880	2570								2100	16100
	600QZ-135							880	2570								2100	14000
	700QH-35							800或900	1100								1350	11650
	700QH-40	1510	3800	3300	61600													
	700QH-72	1280	3100	2900	31700													
	700QZ-50	960	2900	2900	34200													
	700QZ-75	1400	2850	2500	28300													
	700QZ-100	960	2570	2300	22900													
	700QZ-135	1480	2570	2300	19900													
	700QZ-160	1100	2570	2200	13900													
	800QH-35	900或1000	1200	1450	1700	4-M36×500	670	1120	4200	260	2800	840	2800	700	840	1050	4100	76600
	800QH-40							1120	4200								4100	72600
	800QH-72							1120	3100								3900	37400
	800QZ-50							1120	3100								3900	40200
	800QZ-75							1120	2900								3500	33300
	800QZ-100							1120	2900								2850	26900
	800QZ-135							1120	2900								2850	23400
	800QZ-160							1120	2900								2700	16400
	900QH-35G	1000或1100	1300	1500	1750	4-M36×500	820	1710	4400	300	3400	1020	3400	850	1020	1150	6500	129600
	900QH-35D							1360	4600								7000	114800
	900QH-40G							1640	4500								6500	122900

表 (二) Table(3)

序号 No.	型号 Type	ΦA	ΦF	G	H	n-Φf	M	N	O	P	Z	T	W	V	U	ΦY	泵重 Pump weight (kg)	轴向水推力 (N)													
55	900QH-40D	1000或1100	1300	1500	1750	4-M36×500	820	1360	4600	300	3400	1020	3400	850	1020	1150	6500	108900													
56	900QH-72G							5500	63300																						
57	900QH-72D							5500	56100																						
58	900QZ-50G							5500	68100																						
59	900QZ-50D							5500	60300																						
60	900QZ-75G							5000	56300																						
61	900QZ-75D							5000	49900																						
62	900QZ-100G							5000	45600																						
63	900QZ-100D							5000	40400																						
64	900QZ-135G							4500	39600																						
65	900QZ-135D							5000	35100																						
66	900QZ-160G							4500	27800																						
67	900QZ-160D							4500	24600																						
68	1000QH-35							1200	1630								1600	1850	4-M36×500	840	1390	4900	300	3480	1040	3480	870	1044	1250	8000	126000
69	1000QH-40																				8000	119500									
70	1000QH-72	7000	61500																												
71	1000QZ-50	7000	66200																												
72	1000QZ-75	6200	54800																												
73	1000QZ-100	5200	44300																												
74	1000QZ-135	5200	38500																												
75	1000QZ-160	5200	27000																												
76	1200QH-72	1400	1600	1800	2100	4-M36×500	910			2630	4600	300	3800	1140	3800	950					1140	1420								8000	87500
77	1200QZ-50									2080	4600																			8000	94100
78	1200QZ-75							2740	4300	7500	77800																				
79	1200QZ-100							1520	3800	6000	63000																				
80	1200QZ-135							2830	3800	6000	54700																				
81	1200QZ-160							2410	3800	6000	38400																				

#### 4. Concrete prefabricated shaft type installation to close the inlet channel

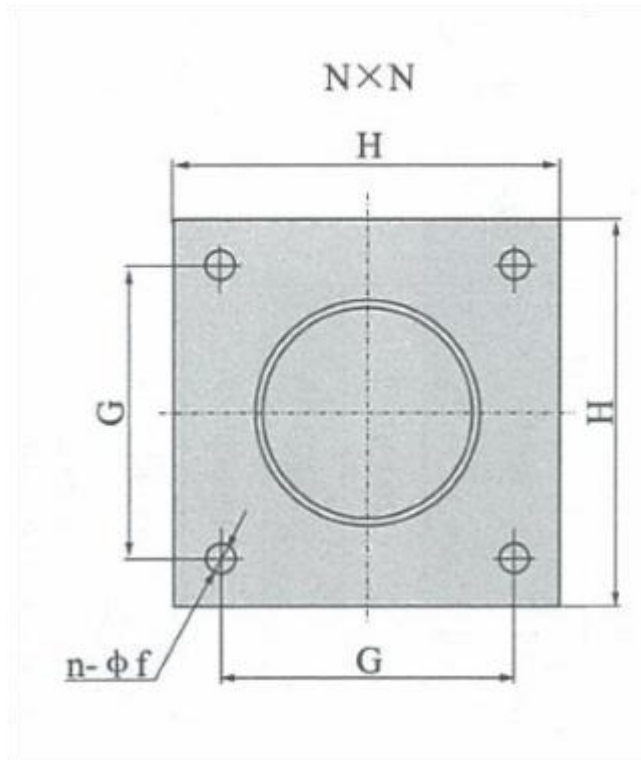


The inlet channel can be equipped with elbow, bell, dustpan flow channel, and the flow channel size in the installation size table is dustpan flow channel (for reference only).

In addition to the need to meet the requirements in the table, it must also be at least

500mm higher than the inlet edge of the runner.

Generally speaking, the installation size of the pump section is proposed by the factory, and the submerged depth is required by the factory, and then determined by the device test: the geometric size of the inlet and outlet flow channel is calculated by the design unit, and the device model test is carried out after the preliminary determination. The geometric size of the flow channel provided by the manufacturer is for reference in the design unit.



序号 No.	型号 Type	Hw	Hs	φF	H <sub>1</sub>	φA	G	H	n-φf	E-F	泵重 Pump weight	轴向水推力 D (N)
1	1200QH-72	1580	2050	1600	950	1900	1800	2100	4-M36×50	1400×1400	8000	87500
2	1200QZ-50		1450								8000	94100
3	1200QZ-75		2150								7500	77800
4	1200QZ-100		800								6000	63000
5	1200QZ-135		2250								6000	54700
6	1200QZ-160		1750								6000	38400
7	1300QH-72	1910	800	1800	1150	2100	2000	2300	4-M36×500	1400×1600	10000	107100
8	1300QZ-50		800								10000	115300
9	1300QZ-75		800								9000	95300
10	1300QZ-100		800								8000	77100
11	1300QZ-135		800								8000	67000
12	1300QZ-160		800								8000	47000
13	1400QH-72	1990	980	1900	120	2200	2100	2400	4-M36×500	1400×1800	12000	127000
14	1400QZ-75		1080								10000	113000
15	1400QZ-100		800								9000	91500
16	1400QZ-135		1180								9000	79400
17	1400QZ-160		800								9000	55700
18	1600QZ-75		2460								800	2300
19	1600QZ-100	800		12000	134500							
20	1600QZ-135	900		12000	116800							
21	1600QZ-160	800		12000	81900							

### Various accessories of QZ and OH series pumps are attached

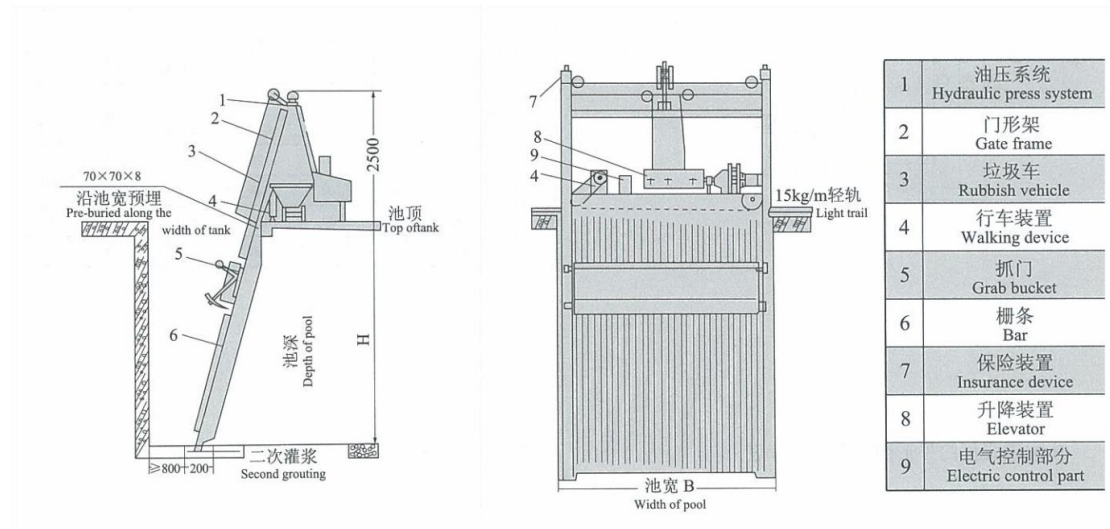
According to customer needs, our company can supply the following accessories:

#### 1. Garbage rack

Depending on the scale of the pumping station, there are automatic discharge and mechanical discharge (removing impurities on the fence) a variety of series for users to choose from, and the size needs to be determined on site. The picture below shows the grid decontamination machine.

GS is a wire rope grid decontamination machine.

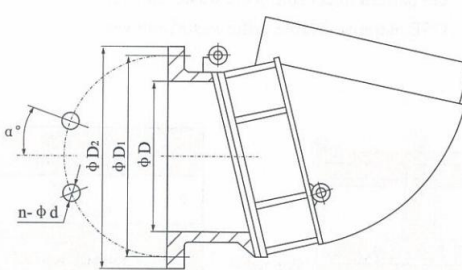
The GSE is a mobile grid decontamination machine.



型号 Model	格栅宽度 Grid	井梁 (m) Well depth	栅条间距 (mm) Space between bars	安装角度 Installing angle	电机功率 Motor power
GS GSE -1000	1000	2~12	20~100	60°~75°, 特 殊情况时可用90° 60°~75°, 90° for special condition	升降电机1.1~1.5kW, 控制电机 0.75kW, 行走电机0.8/0.4kW(双速) Elevting motor 1.1~1.5kW, Control moto0.75kW, Walking motor 0.8/0.4kW(Double-speed)
GS GSE -1250	1250				
GS GSE -1500	1500				
GS GSE -1750	1750				

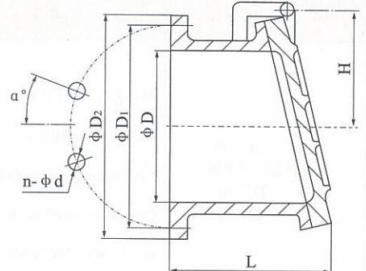
## 2. Knock on the door

### A. Float door shape and connection size table



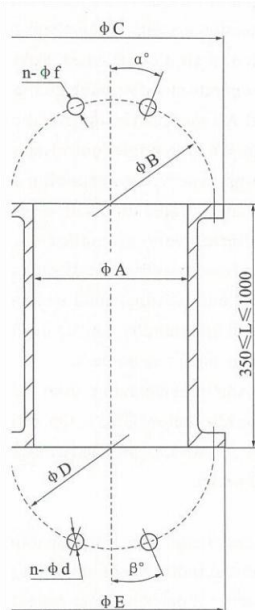
井筒出水中径 Discharge caliber of well pipe	φD	φD <sub>1</sub>	φD <sub>2</sub>	n-φd	α°
400	400	495	540	8-23	22.5
500	500	655	710	6-27	30
600	600	705	755	10-27	18
700	700	810	860	12-27	15
800	800	920	980	12-27	15
900	900	1020	1075	12-27	15
1000	1000	1120	1175	12-27	15
1200	1220	1320	1380	12-27	15
1300	1300	1430	1500	10-27	18
1400	1400	1560	1630	12-36	15

### B. Counterweight flap door outline drawing and connection dimension table



井筒出水中径 Discharge caliber of well pipe	φD	φD <sub>1</sub>	φD <sub>2</sub>	L	H	n-φd	α°
400	400	495	540	230	260	8-23	22.5
500	500	655	710	280	310	6-27	30
600	600	705	755	330	360	10-27	18
700	700	810	860	420	410	12-27	15
800	800	920	980	420	460	12-27	15
900	900	1020	1075	420	510	12-27	15
1000	1000	1120	1175	420	560	12-27	15
1200	1200	1320	1380	420	700	12-27	15
1400	1400	1560	1630	480	790	12-36	15

## 3. Embedded pipe



预埋管联接尺寸表 Connection Dimension Table For Pre-buried Pipe

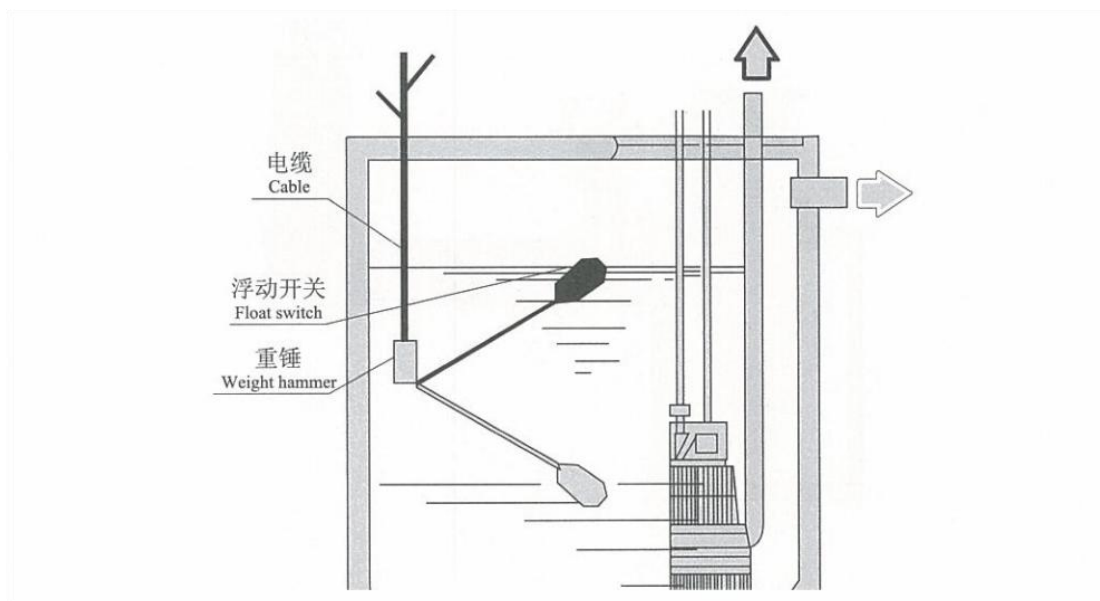
穿墙管规格 Wall Pipe Specification	φA	φB	φC	n-φf	α°	φD	φE	n-φd	β°
400×L	400	495	540	16-22	11.25	495	540	8-23	22.5
500×L	500	600	645	20-22	9	655	710	6-27	30
600×L	600	705	755	20-26	9	705	755	10-27	18
700×L	700	810	860	24-26	7.5	810	860	12-27	15
800×L	800	920	975	24-30	7.5	920	980	12-27	15
900×L	900	1020	1075	24-30	7.5	1020	1075	12-27	15
1000×L	1000	1120	1175	28-30	6.429	1120	1175	12-27	15
1200×L	1200	1340	1405	32-33	5.625	1320	1380	12-27	15
1300×L	1300	1450	1520	32-36	5.625	1430	1500	10-27	18
1400×L	1400	1560	1630	36-36	5	1560	1630	12-36	15

注：L为预埋管长、由用户确定（350≤L≤1000）

Note: L is the length of pre-buried pipe and decided by customers (350 ≤ L ≤ 1000)

#### 4. Liquid level switch

The high performance Key level switch can realize the operation of the pump according to the change of the level.



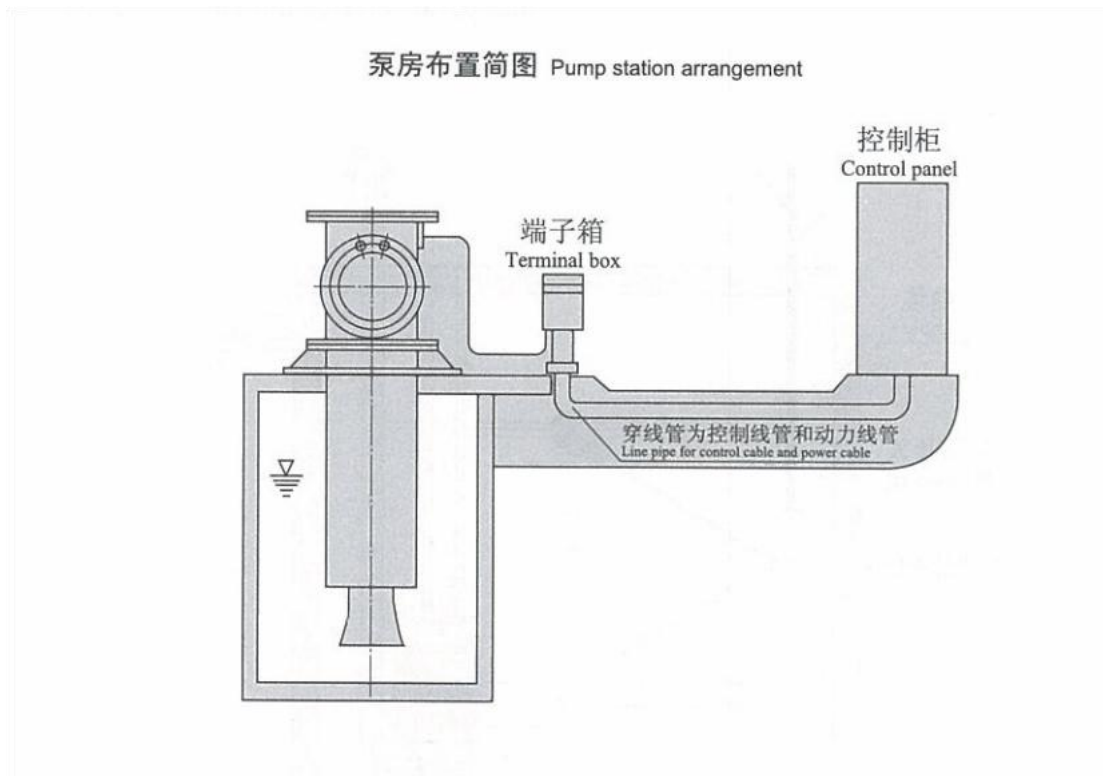
#### 5. Control cabinet

① Use: The special control cabinet can be fully automatic protection, with the main circuit short circuit, phase loss, overload protection and unattended pump door, ready pump and signal output. It has a variety of control modes, such as single control type, manual switching with one standby type, timing automatic switching with one standby type, alternating automatic switching with one standby type, manual switching with two standby type, manual switching with three standby type, etc., which can meet various needs of users.

② Adaptation range: a. ambient temperature  $-25^{\circ}\text{C} \sim +40^{\circ}\text{C}$ ; b. The relative temperature of the air does not exceed 85%; c. There is no danger of explosion, and there is no gas and conductive dust in the medium that is sufficient to corrode metal and destroy insulation.

③ A complete set of medium and high pressure electric control cabinet is equipped to realize the automatic control of electrical power of the pumping station. For specific selection, see Conjunction.

6. Terminal box The purpose of terminal box is to facilitate installation and construction operations. Therefore, the connection between the pump and the electric control cabinet is now extended to an additional control cabinet (still called the terminal box) with several signal indications and some control functions to solve the inconvenience of operation when the central control room is far from the pump room. On the basis of connection type and control type, it is divided into four types: indoor type and outdoor type.



Note: 1. All signal cables can be buried with a threading pipe.

2. The power line determines the size of the embedded pipe according to the diameter and quantity of the cable provided.

3. The power line and signal line must be buried separately and cannot be mixed through.

4. Dc current signal is used between the terminal box and the control cabinet, which can be transported for long distance without attenuation.

According to the needs of users, our company can also supply gate valves, opening and closing machines and other accessories.

## Order instructions

When ordering, the correct product model, product name, performance parameters (flow, head, motor power, operating voltage), installation form of pipe bending (pipe bending suspension, shaft suspension, prefabricated shaft type, open, closed) should be indicated. The control cabinet should indicate: starting mode (direct starting, autobuck starting, SCR soft starting), control

quantity (one control one, one control two, one control three, one control four and other control modes), liquid level control mode (float level, pressure sensing level and other modes), such as with terminal box, should indicate whether it is control type, or connection line, outdoor type, or indoor type. The normal supply length of the submersible cable of the company is 10m, if the user has special requirements, please indicate. If there are any other special requirements, please contact the sales and Marketing Department of the company before signing the contract, and it should be clearly indicated when signing the contract.