



Manufacturing

Catalogue of fuse products

Low voltage fuse body | fuse support / seat | fuse alarm | car fuse | load melt / zero pole fuse

MINGRONG
ELECTRICAL PROTECTION



本手册所有文字资料及产品图片均为我司版权所有，如有侵权必究。因数据更新关系，选购本手册产品时，请致电公司服务热线进行确认。M2C FUSE V21



[Company Profile]

MingRong Electric Appliance (Zhejiang MingRong Electric Appliance Protection System Co., Ltd.) originated in the early stage of China's vigorous development. With the strong development of China's economic development tide, with the help of the advanced production concept and strong research and development technology resources of Mersen Group, it flew with the trend. After 40 years of hair Exhibition, has a coverage of the American standard, British standard, German standard, national standard global product standard system and sold to more than 50 countries around the world, serving nearly 10,000 customers.

Starting from the traditional power, distribution, industrial construction, we continue to explore a strong breakthrough in wind power, photovoltaic and other new energy fields. In the blueprint of the new infrastructure, it will settle in Changxing, build a modern production base, gather global technology development resources, optimize the supply chain structure based on China, and establish the digital management concept and the highest safety and ring Guarantee, quality assurance system.

Perfect quality assurance system, excellent management team, mature The operation system is the cornerstone of the development.

Win-win cooperation, cultural concerns and social responsibility are our higher pursuit



fuse link

03-06 Cylinder cap-shaped fuse body

07-09 Round tube knife contact

fuse 10-15 square tube knife

contact fuse

Bolted fuse 17-

23 Bolted fuse

24-28 Round pipe bolted type semiconductor devices

Quick fuse body for protection

29-37 Square pipe bolted type semiconductor device

Quick fuse body for protection

Fuse support parts / seat

39-45 Cylinder-cap fuse support parts

46-52 Square tube contact insert

fuse base

53-57 Special fuses base

aler tor

59-60 Fuse alarm

Load melt

51-62 Fuses (handle)

Zero line

fuse 53-65

Zero fuse

Car fuse

67-71 Auto Fuses

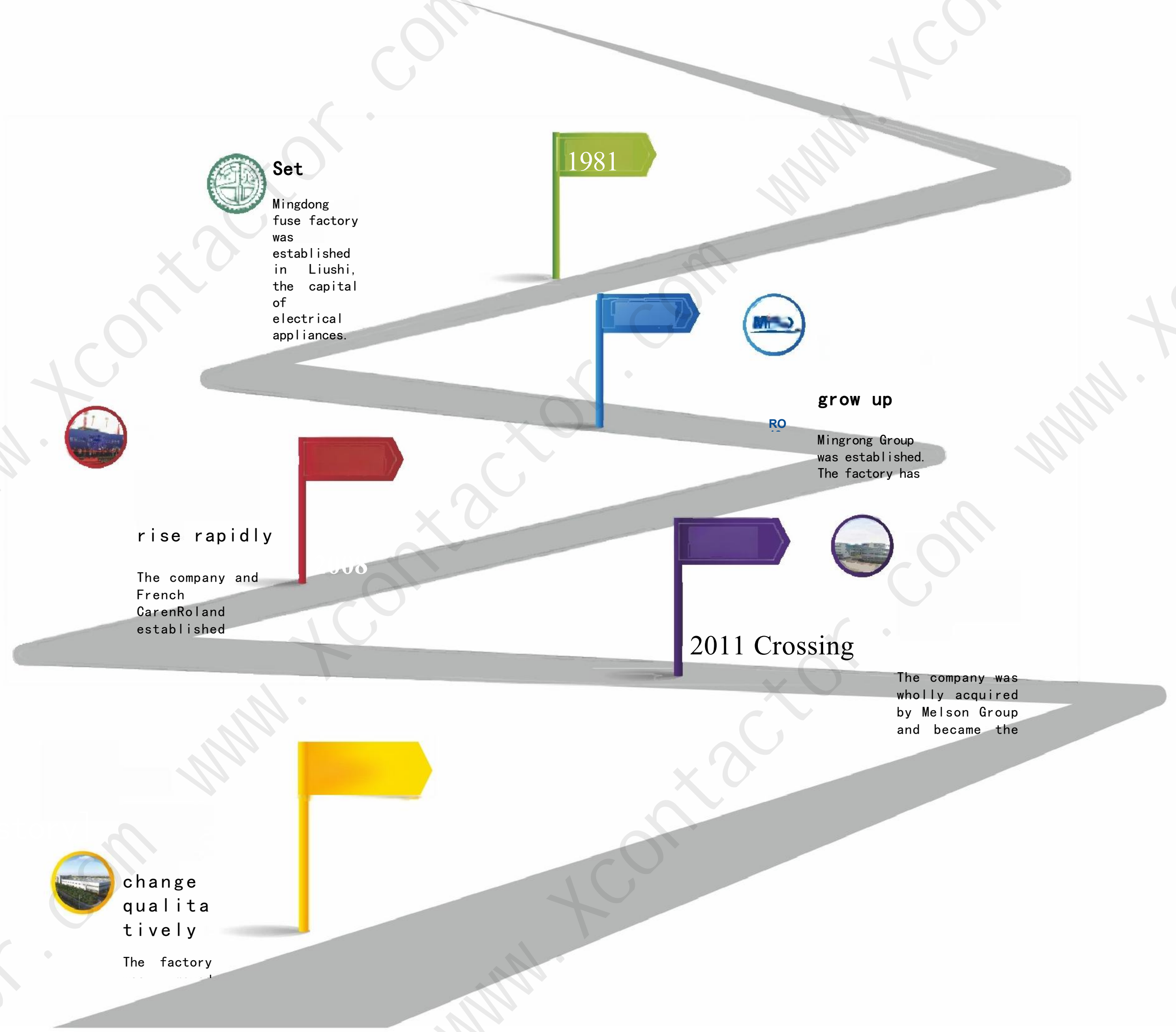


[catalogue]

Esta



[development history]



[enterprise honor]



Guide for low-voltage fuse selection

The main function of the fuse body set in the circuit is to be cut off safely and reliably when the circuit fails, so as to provide protection for the discrete components or the whole circuit. The following provides the relevant

Normal working conditions and installation conditions

Surrounding air temperature " $-5^{\circ}\text{C} \sim +40^{\circ}\text{C}$, and the average temperature value within 24 h does not exceed $+35^{\circ}\text{C}$ altitude: does not exceed 2000 m

Atmospheric conditions: Humidity: the relative humidity of the air at the installation site is not more than 50% at the maximum temperature of $+40^{\circ}\text{C}$, and a high relative humidity is allowed at a lower temperature. For example, at 20°C , the relative humidity can reach 90%, and measures must be taken for the condensation occurring on the product due to the temperature change.

Pollution
grade: three-
pole
installation
Category:
class

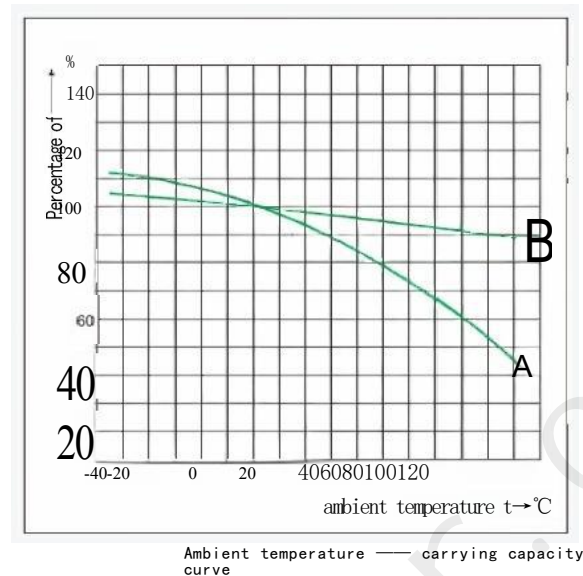
ambient temperature

Means the air temperature directly around the fuse body and should not be confused with room temperature. In many cases, the temperature of the fuse is quite high, because the fuse is configured in the support parts / base of different structures and the whole fuse is closed distribution / control cabinet.

Use capacity reduction

At 20°C ambient temperature, we recommend that the actual operating current of the fuse body should not exceed the rated current value. When selecting the fuse body, the environment and working conditions, such as sealing degree, air flow, link cable size (length, section), instantaneous peak, should be considered; the current carrying capacity test of the fuse body is conducted at the ambient temperature of 20°C , and is affected by the ambient temperature change during actual use. The higher the ambient temperature, the higher the operating temperature of the fuse body, and the shorter its life span. Instead, operating at lower temperatures will extend the life of the fuse body.

The following figure shows a typical curve of the influence of the ambient temperature on the current carrying capacity.



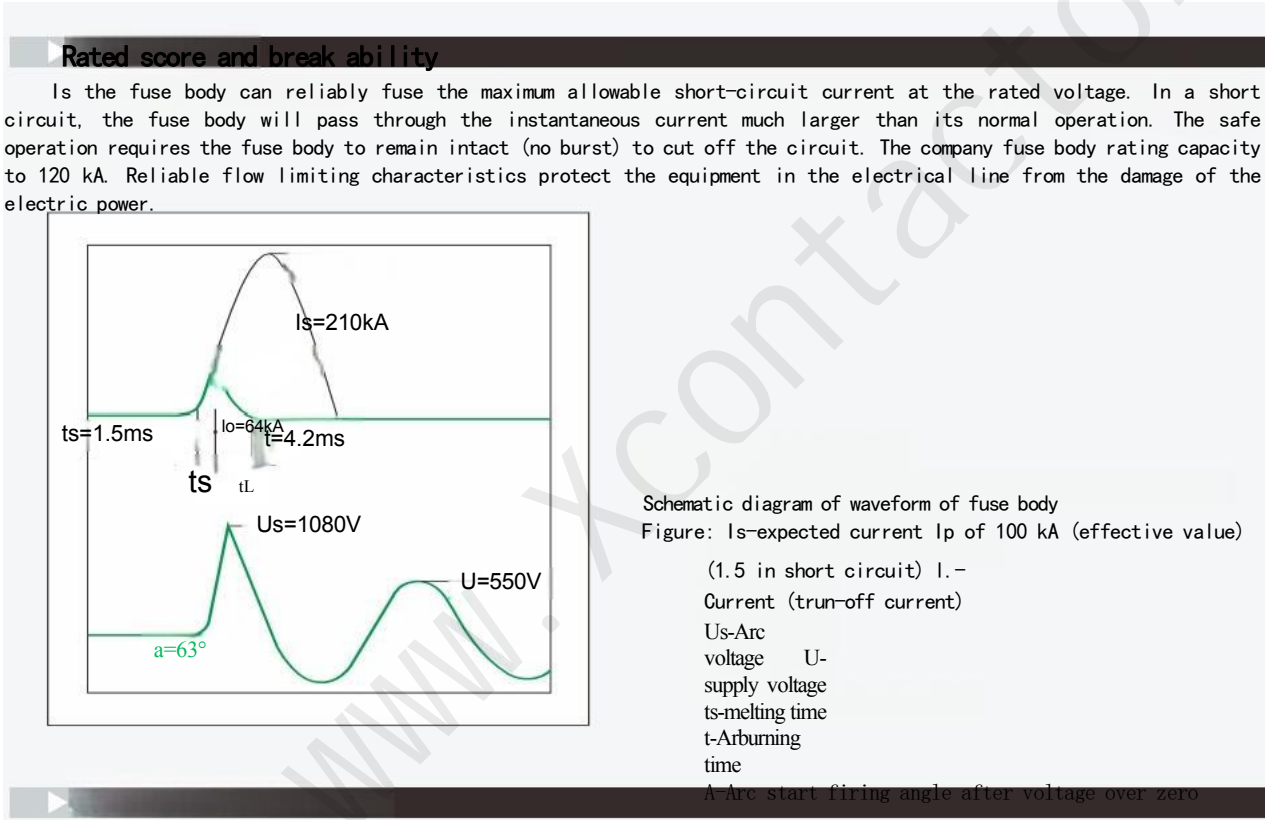
Where: curve A: ordinary (gG) fuse curve for line protection; curve B: fast (aR) fuse curve for semiconductor equipment

the "factors to be considered in the selection of fuse body", special attention must be paid to 1), 3), 6) three items, namely, normal operating current, ambient temperature and overload increment. For example, one of the common causes of the misoperation during routine operation is the failure to fully consider the starting current into the motor circuit, the surge current and harmonic current of the capacitor circuit, and the air temperature around the fuse body.

For example: the ambient temperature of a certain occasion is 20°C , choose the common type (gG) fuse rated current $I_{in} = 63\text{ A}$, now the above fuse in the high temperature environment, must reduce the working current, from the left ambient temperature — bearing capacity curve A shows that the percentage of 70°C running rating is 0.78, in order to ensure that the fuse body does not mistake, the rated current value of the fuse body should be selected:

$$I_n = \frac{63\text{ A}}{0.78} = 80.77\text{ A}$$

$I_{in} = 80\text{ A}$ according to the standard current level of the fuse body

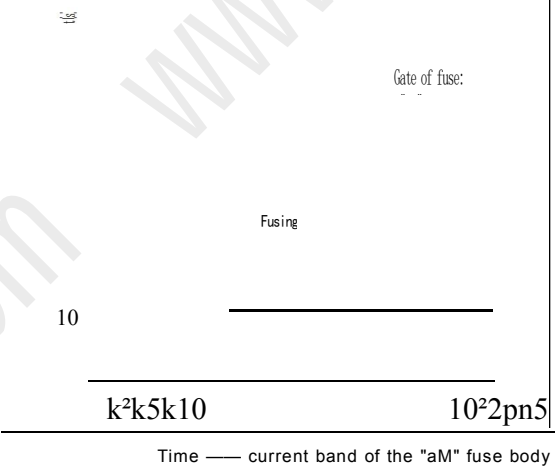


The factors that should be considered when selecting the fuse body:

1. Normal working current;
2. Working voltage; 3. ambient temperature;
4. The time when the overload current and the fuse body must be fused; 5. The possible fault current;
6. Pulse, shock current, surge current, harmonic current, starting current and circuit process transient value; 7. Structure size, wiring mode, visual indication (fuse or not), etc.

$I_p(I_n)$	6.3	10	12.5	19
The t fuse (S)	60	60	0.50.2	0.5
t arc front (S)				0.10

I_n - rated current of the fuse body



low voltage fuse
Low Voltage Fuse

Professional High VoltageAnd LowVoltage Fuse Manufactu rer

fuse link

na Fuse CombmeaElectrical
Appliance

Cylinder-cap-shaped fuse body



use

This series of fuse is suitable for AC 50Hz, rated voltage to 690V and rated current to 125A, mainly as overload and short circuit protection (gG) for electrical lines; and also derived as short circuit protection (aR) and motor short circuit protection (aM) for semiconductor equipment.

The rated breaking capacity of this series is up to 100 kA.

The series of this series meet the national standard GB13539 and the standard IEC60269.

design feature

Change section melt made of pure copper / silver sheet (or wire) made of high strength porcelain

Purity quartz sand acts as the arc-extinguishing medium. The come into contact with. The fuse body can have an impactor, and when the melt is fused, the impactor acts immediately,

Push the micro-switch, send out a variety of signals or automatic switch circuit. According to the users needs,

Also can produce the special fuse body shown in Fig. 1.2~1.4.

This series of fuse is of in structure and can be installed in RT14, RT18, Rt 19, and other corresponding sizes.

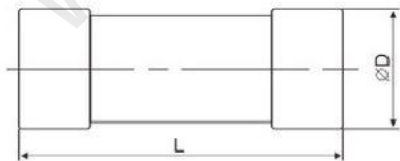
base data

No., dimension, rated voltage and rated current in Fig. 1.1 ~ 1.4 and Table 1;

matters need attention

Due to the high fast melting power consumption and temperature rise, the maximum accepted power of the supporting parts should be considered when selecting the supporting parts. It is recommended to choose semi-closed or open structure, such as RT19 series, or RT18 series support parts with fast melting.

Using body size inch / R code rated voltage rated current weight									
续表1									
order number	R code			V) A) G)			mm		
r	普通	快速	延时	普通	快速	延时	普通	快速	延时
0104R010RS	0			18X5	00		1-32	6.5	
0105 R011RS11	0			21X58	00		2-63	23.5	
0106R012RS12				27X60	35	100	2-32	51	
0107 R013RS13				31X50	500		2-40	23	
0108 R014RS14AJT JKS LPJ AC08.5X31.55004.4									
0109R014ARS14A8.5X23									
0110 R014H RS14B RT19-16gF1				85X36	250		0.5-20	5.0	
0111 R015RS15				10.3X38	300/500		0.5-20	5.0	
0112R015ARS15A				10.3X25	500/600		0.5-32	7.7	
0113R015B				43.25 KTK KLM	8	250	0.5-16	4.8	
01143X				10.3X31.5	250/500		0.5-25	5.8	
0115R015057				10.3X10	300/500		0.5-32	6.2	
0116R016RS1614.3X5150020				10.3X7	600		2-32	11	
0117 R016ARS16A814.3X3827.					690		2-63		
0119R016CRS16C014.3X6750058					500		2-50		
0120 R017RS17022.2X58500/69010~12591.2							2-50		
0122R019RS19020.5X1276000.5~3263									
0123R019ARS19A20.5X76				250/5000.5~6385					
0124 R019B				R1-00URE22631.120.5X1146000.5~32			172.4		
0125R019				S19E	1.1	027X139	32~6360		
0126 R019D				RS19	1.1	0147X27	32~63		
				D					



续表1

序号	本厂型号	国内外同类产品	外形尺寸/尺码	定电大 定电流	重量
	普通	快速	延时	(A)	(g)
0137	R08	(aRR5)	Js	12 图号0 D020	40

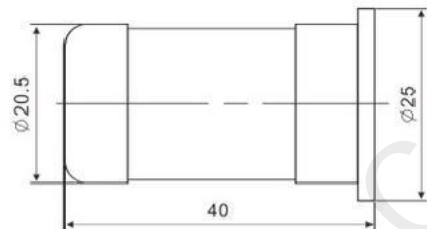
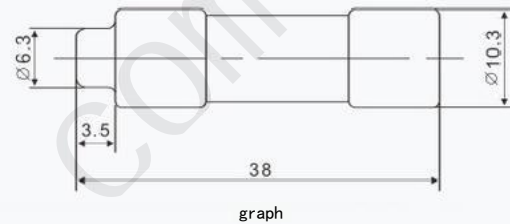


图1.2



续表1

word size	Fused body size	Form size / R code	Rated voltage, rated current	weight
本公司	普通(gG)	China and foreign	Figure 8 (A) 32 (g)	



graph



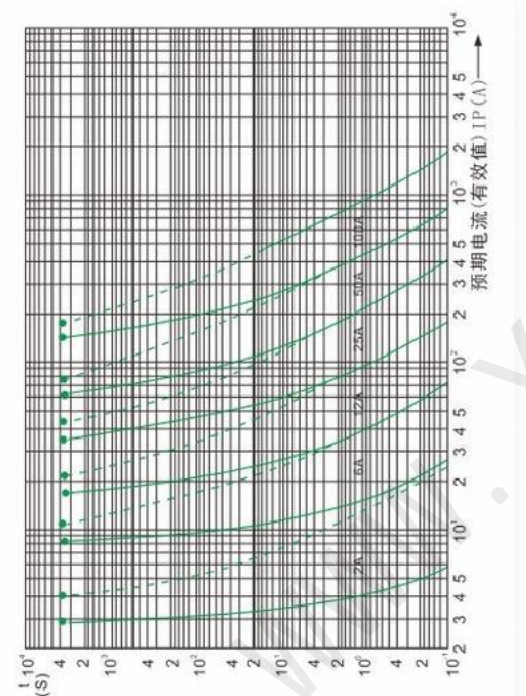
续表1

序号	熔断体型号	外形尺寸/尺码	额定电压	额定电流	重量
	公司国内同类产品	普通(gG)快速(aRR5)延时(D)	1.4	0.5-32	(g)
0139	ATQR	TK KLKR14.3X51	690	52	
	R017HRS17H	1.4 2X5800	1025	82	
4	R019HRS19H	1.4 20.5X127600	690	0.5-63	60
0142R019AH	RS19AF	1.4 20.5X76500	0.5	72	
0143R019BH	RS19BH	20.5X114500	0.5 b	148	
0144	R019CH	1.4027X139	600	-63	172
0145	R019DH	1.4027X147600		32 63	

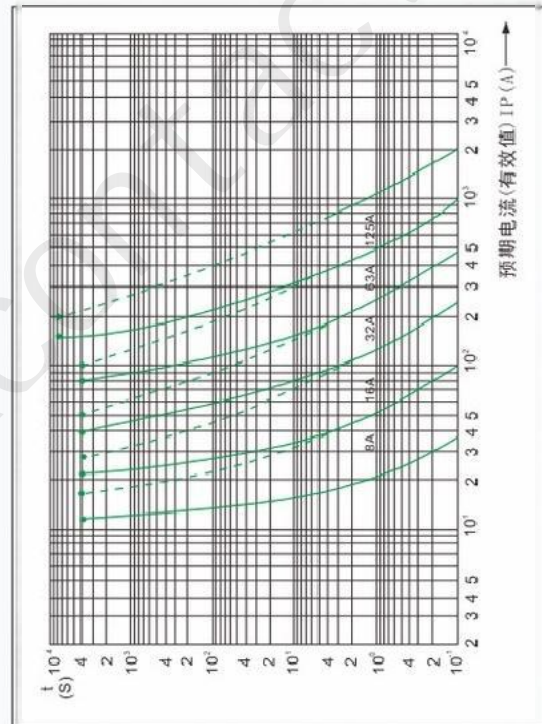


graph 1.4

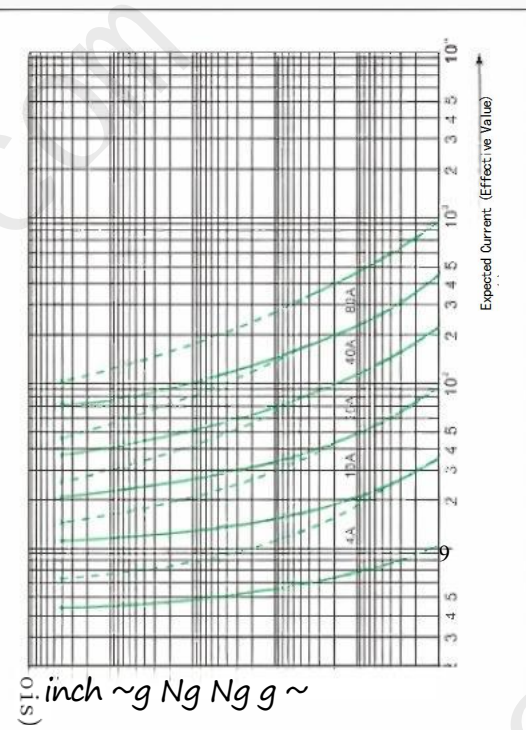




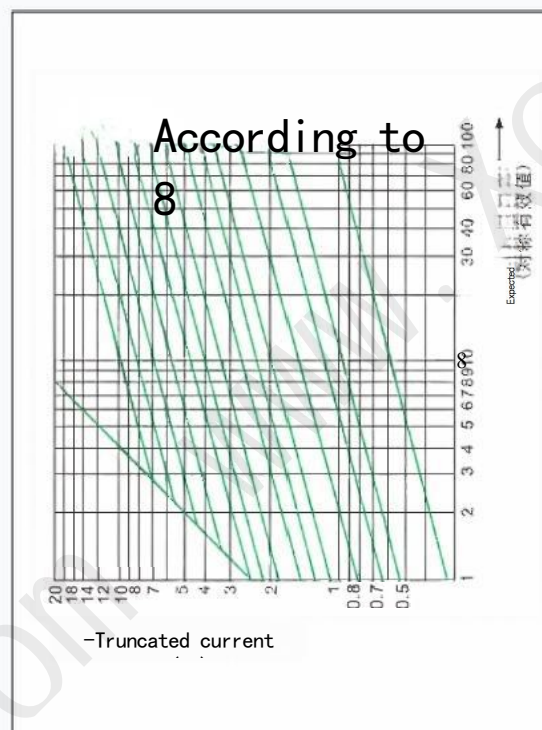
Time of the "C" fuse body—the current band



Time-current band of the "gC" fuse body



Journal of Management Education 33(1)



“gg”熔断体的截断电流特性曲线

Cylinder knife-shaped contact fuse body



▶ use

This series of fuse body is suitable for AC 50 Hz, rated voltage to 600V and rated current to 630A, mainly used in electrical devices as overload and short circuit protection (gG) of the line; and it also can be derived as motor short circuit protection (aM).

The series of this series meet the national standard GB13539 and the standard IEC60269.

design feature

The variable section melt made of pure copper sheet is encapsulated in a melt tube made of high temperature resistant epoxy glass cloth, filled with chemically treated high purity quartz sand as the arc extinguishing medium. The two ends of the melt are firmly electrically connected with the two touch knives through spot welding. It has the characteristics of reliable contact and convenient to use.

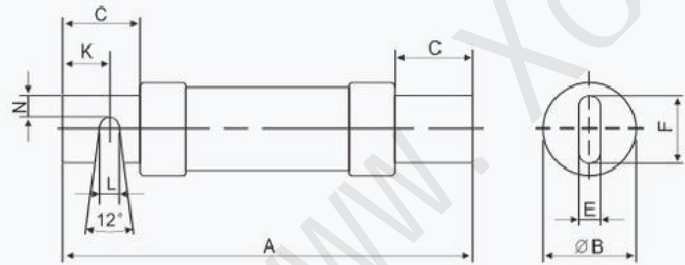
 base data

The fuse figure number, external size, rated voltage and rated current are shown in Figure 2.1 ~ 2.2 and Table 2;

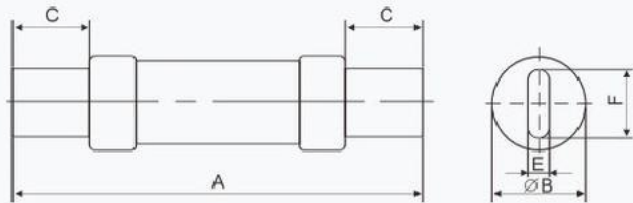
MiRO. Moss melt

表2													
order number	Block size	rated voltage (V)	rated current (A)	外形尺寸 (mm)	A	B	C	E	F	K	L	N	重量 (g)
	国内外同类产品			图号									
	RO20	600	63~100	2.1	2002	34	25	3	19		7	6.5	272
202	RO20A	250	63~100	2.1	149	27	25	3	19	12.5	7	6.5	139
201	RO20B		100	2.1	181	40	35	5	28	17.5	7	11	394
		250	20										

Note: All the above products can be made into no open type at both ends, as shown in Figure 2.2.



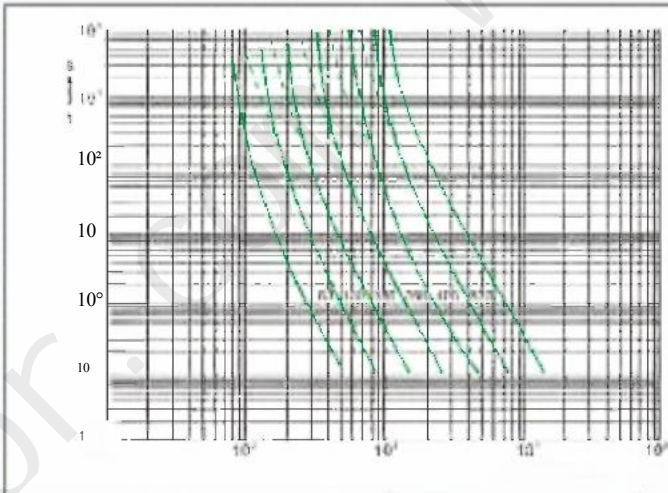
续表2												
序号		熔断器型号		额定电压	额定电流	外形尺寸 (mm)						重量
序号	熔断器型号		额定电压 (V)	额定电流 (A)	图 号	A	B	C	E	F	重量 (g)	
	本公司	国内外 同类产品										
0209	OT100	OT100	250	63~100	2.2	151	27	29	3.2	19.1	120	
0210	OT200	OT200	250	100~200	2.2	181	40.3	37.5	4.8	28.6	320	



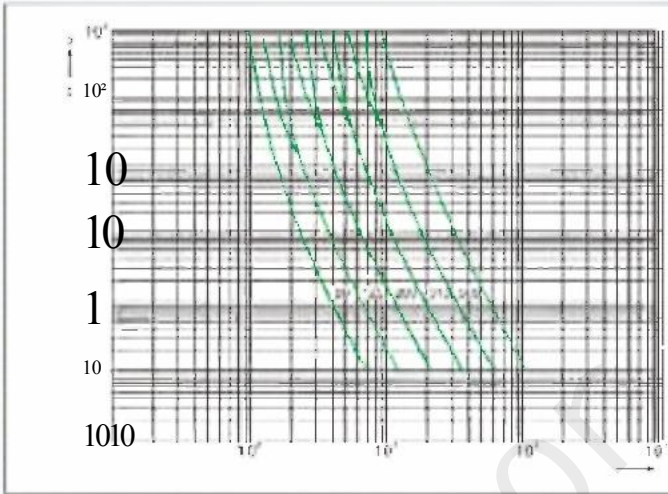
graph 2.2



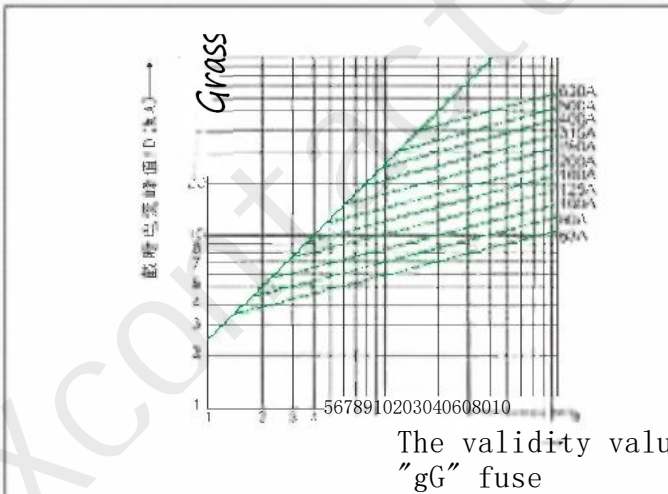
特性曲线



Time of "gG" fuse-current



Time-current band of the "gG" fuse body



The validity value kA) truncation current characteristics of "gG" fuse

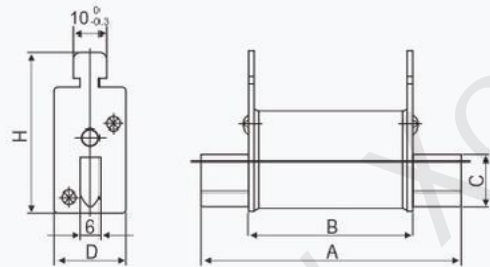
压熔断器
断体



graph 4.3

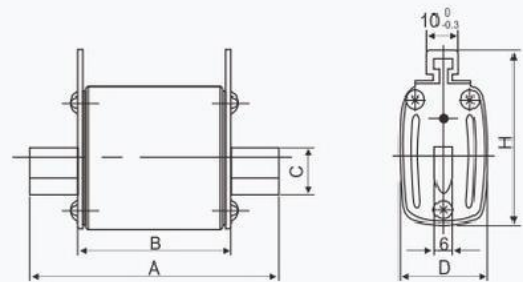
High_Voltage_Fuse

续表4									
No. Fuse size number rated rated small R weight (mm)									
Domestic and foreign similar products voltage and current size map number AD									
Access (g) fast (aR) general (aR) (V) 9									
0410 R030ARS30A NT00C 70M15165006904~1000004.44915 214878 123									
0411 R030B RS30BNT0005006904~1000004.47815 8117									
0412 R030C RS30C3NA33NE1850069010 1000004.478 4915 52.5132									
0414 R031B RS31B NTO 3NE415006906~16004.41256815 2961.5278									
0415R031CRS31C NT10413 50069032~2001 4.413568202961.5293.5 Figure 4.4									



续表4									
Size fuse body number									
Internal and external similar products									
041T0 (N10) RT16-0 500 4416004.5~ 78 68152956 175									
041T0 (N10) RT16-0 690 125 68152956 252									

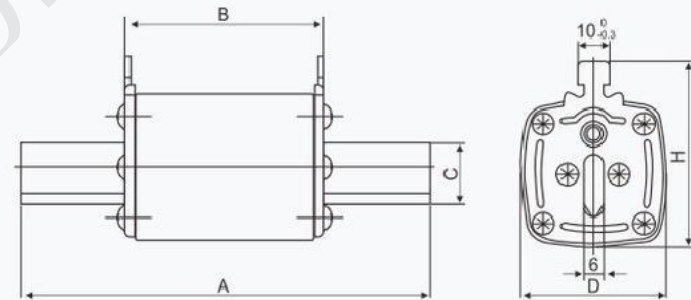
Plate (A) Size drawing number



graph 4.5



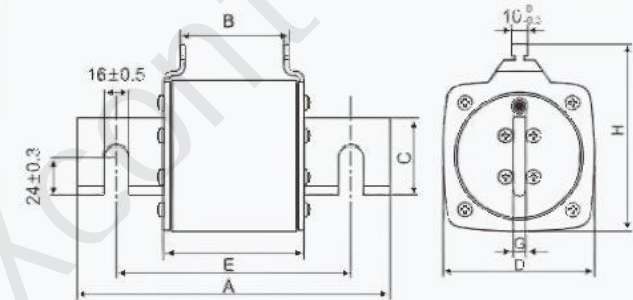
续表4									
Fuse breaker and rest model									
By the mouth									
only common (g) fast (aR) common (aC fast (A day									
额定 外形尺寸 (mm)									
电流 尺码 图号 A B C D H 重量									
32-250 1 4.6 135 68 48 60 455									
68 25 58 70									
150 68 32 68 80									
20 25 52									
20 40 650									
880									
500 80~40024.615068 71580									
500 32~20014.613568									
380/500500~12504a 4.6200 90 50971132140									



graph 44.6



续表4									
Size fuse body number									
Internal and external similar products									
041T0 (N10) RT16-0 500 4416004.5~ 78 68152956 175									
041T0 (N10) RT16-0 690 125 68152956 252									



graph 4.7

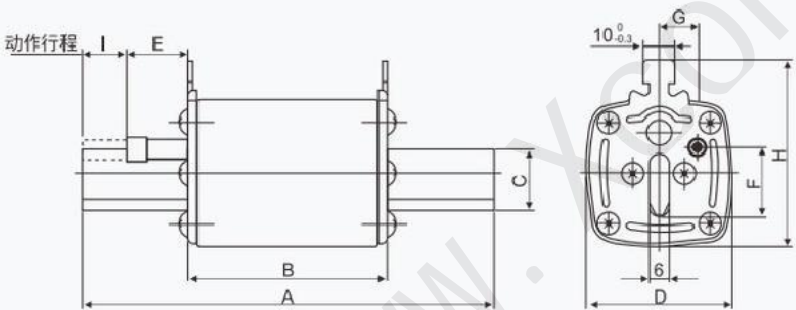


2: RQ³ 8, R³K connecting
R039, R039B wiring hole standard for two horizontal structure.

MiRO. Moss melt

续表4

No. Fusing body No. Rated rated external size (mm) weight		The companys domestic and foreign similar products voltage and current code number A B C D F F	
		Yitong (oG fast (oR) and connected (oG) fast (6R) 00	
0435	R031Z RS31Z RT16A-00500/69035~125004.978491529152255958183		
0436	R032Z RS32ZRT16A-1	500/690200~25014.91356820482514.5166012390	
0437	R033Z RS33ZRT16A-2	500/690315~400 2 A*15 6825583014.5197012683	
0438	R034Z RS34Z RT16A-3	500/690500~6303500/ 4.9150 32 6730145.198 12880	
0442	R036Z RS36Z	690125~160 4.9135 68 2024025201.56 112369	

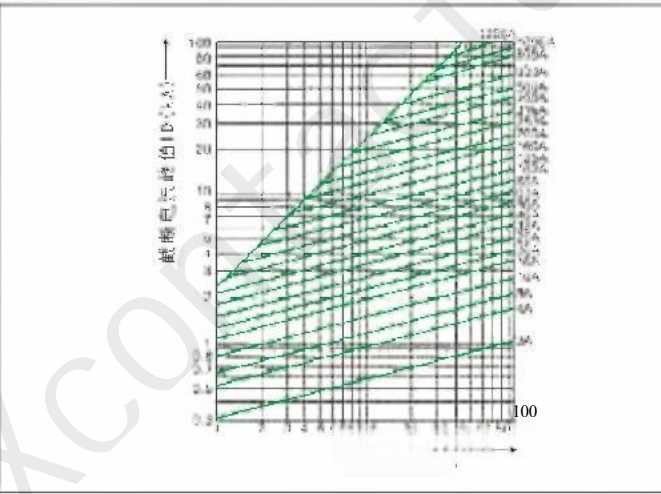
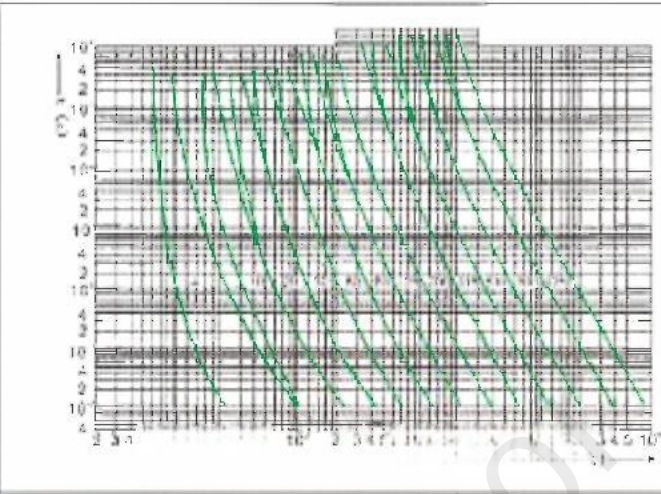
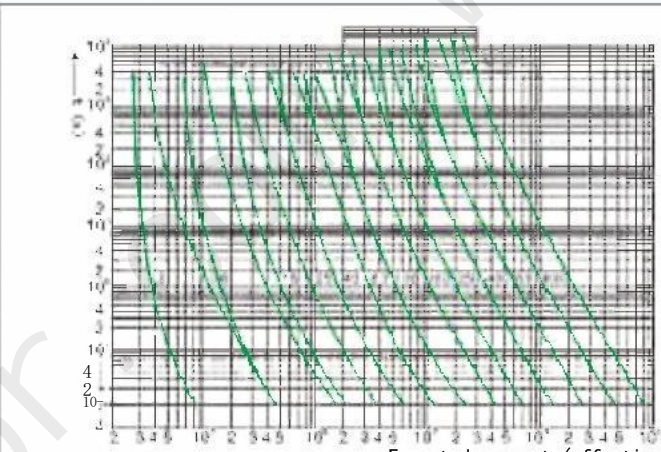


graph 4.9



Professional Manufacturer for
High&Low Voltage Fuses
and Fuses
Appliance
Fuse Combined Electrica

特性曲线



Low voltage fuse
Low Voltage Fuse

Professional High Voltage And Low Voltage Fuse Manufacturer

Bolted type fuse

Bolted type fuse body



use

This series of fuse body is suitable for AC 50 Hz, rated voltage to 1200V and rated current to 630 A, there are three different melt, one as electrical line overload and short circuit protection (gG); the other as semiconductor equipment short circuit protection (aR); also derivative motor short circuit protection (aM).
The rated breaking capacity of this series is up to 80 kA.
The series of this series meet the national standard GB13539 and the standard IEC60269.

design feature

A variable section melt made of pure copper / silver sheet (or wire) is enclosed in a melt tube made of high strength porcelain or epoxy glass tubes filled with chemically treated high purity quartz sand as an arc extinguishing medium. The two ends of the melt are firmly electrically connected with the end plate (or touch knife connecting plate). The fuse body can have an impactor. When the fuse body fuse, the impactor will immediately act to push the micro switch, send out various signals and automatically switch the circuit.

base data

No. , external size, rated voltage and rated current are shown in FIGS. 6.1~6.11 and Table 6;

Note: Please consult the regional sales or local agent for the fuse size and specific parameters of this series.

MiRO. Moss melt

表6 Voltage and current of A B C OD EF H Od			
序号熔 断体 型 号	额定电压	外形尺寸 (mm)	重量
502RG2	RGSOK RGS2	TSR T12- 6340540~1006.1561344567588.5255..13551. 113108145227.56573.8 94	

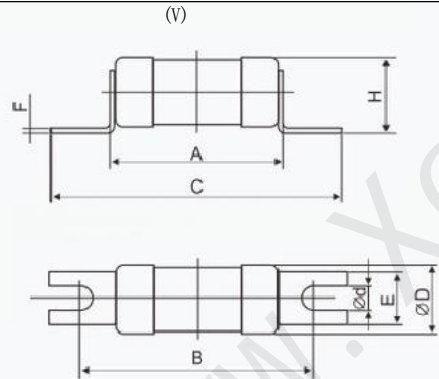


图6.1

序号 熔断体型号	额定电压	额定电流 A B	外形尺寸 (mm)	重量 (g)
0503RG1RGS1	TI500	4~356.2547385229.51.5255.5X7.555		
0504 RG4	RGS	GSG690/80010 1006.249.5617716.512.52.0186.5X932		
0505 RG6	RGS62	500806.2689411331192.0339X11146		
0506 RG	CF	500006.2689411334192.0359X11228		
0507RG11	RGS1	R2 GSE2506~756.227.5.425616.512.52.017.56.5X		
0508 RG12RGS1GR2LGSE25075~1756.231.5588026193.0279X115 79.5				
0509 RG RG GSB5006.23137 46		0.895		
0510 RG14BRGS 4B GSE500220R6		6.25464738.570.89.54.5X.5		
0511 RG15 RGS15		GSB250 2006.234608830253.036		
0512 RG17RGS17 SE50040~1006.251789622.220.52249X1262.3				
0516 RG18RGS1860075~1506.240709530253.23311X 147				
0514 RG19 RGS19 AA	CR	600		
75~3256.2538210737304.04211X13219				
0515 RGOH	5002-32	6.234728413.59.41.2155.5X7.818		
0516 RG4AD RGS4AD	50GH	250		
0517 RG4A RGS4A	60GH66025~2062295978238203255X453			
0518RG4BRGS4B660GH 66056.250.58210831253 3410.5X1675				
0519RG4BHS4BH100056.2702533410.5X1696				

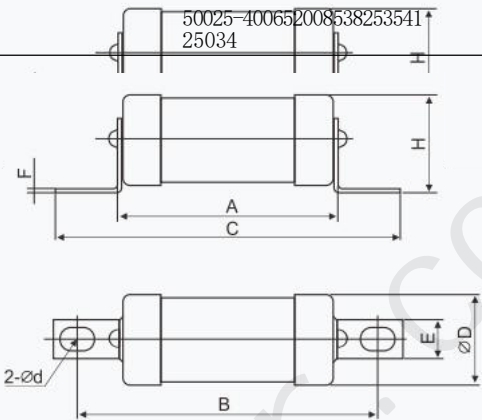


图6.2



序号熔断体刑号	额定电压 (V)	额定电流 (A)	外形尺寸 (mm)	重量 (g)
0523 RGO	415	1.32	32	15.2
0524 RGO	415	40	636.3	24

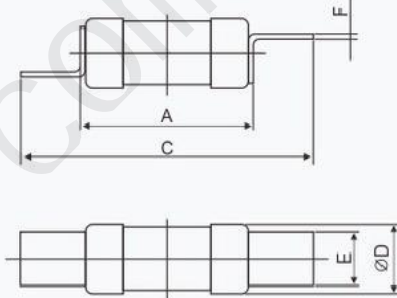


图6.3

序号 熔断体刑号	额定电压 (V)	额定电流 (A)	外形尺寸 (mm)	重量 (g)
0525RG4 (ZRS)	90/00010	1006.449.563771651252.241865		
0526 RGS7 (Z)	6900006.450802538	10.5x17		

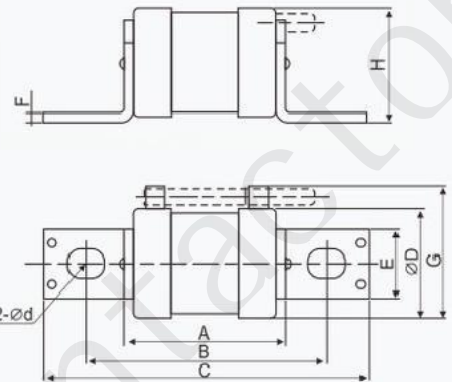


图6.4



MiRO。苔熔 A o d o F u a e c o m b i n e d E l e c t r i c a l

续表6

序号熔断器型号	额定电压	外形尺寸 (mm)	重量
普通 (gG) 快速 (aR) 普通 (gG) 快速 (aR) (V) (A)			
0528 RG1K RGS1K6	554738522131.2256.5	90	81
0522CRG5	0.551809825192.028.59	C6	
0530RG5 RGS GSB6	5110122131.5276.591	28	
1 RG5-1 RGS5-	01bm 6.511012414025.5131.3286.5×998		
52 RG5D RGS5D	GSB120032-636.511012413826131.5276.5107		
0533 RG13 RGS13	C25 5002-256.557759115131.520.56.5		
0534 RG16 RGS16	GSB 50025-406.556789514131.5176.529		

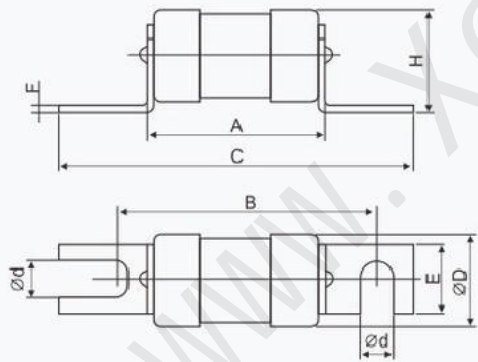
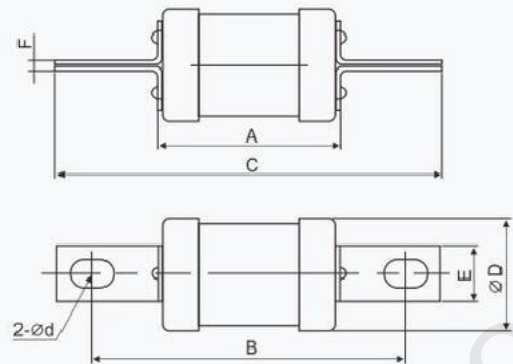


图6.5

续表6

序号熔断器型号	额定电压	外形尺寸 (mm)	重量
普通 (gG) 快速 (aR) 普通 (gG) 快速 (aR)			
0536 RG8RGS8 TC415550125160	n 135193.08.5×192		
J537 RG8RGS	415/55080~100203.0.6×960.9		
0538 RG9 RGS9 RT15-200B2415/550200	6.67211013540193 9.5>5	242	
0539 RG10 RGS10 RT15-20083	415/550250-	9x15	563
0540 RG10B RGS10B TM	3506.67311013553253415/550355-4006.67011013560254	8.5×15	



graph 6.6



High_&Low Voltage_Fuse

续表6

序号	熔断器型号	额定电压	外形尺寸 (mm)	重量
普通 (gG) (A) 快速 (aR) (V) (A)				
15425713771600580130037823670	RGS7GSC	600	350-5006.7439712236.53088311×13	219
0544RG19RGS1910				

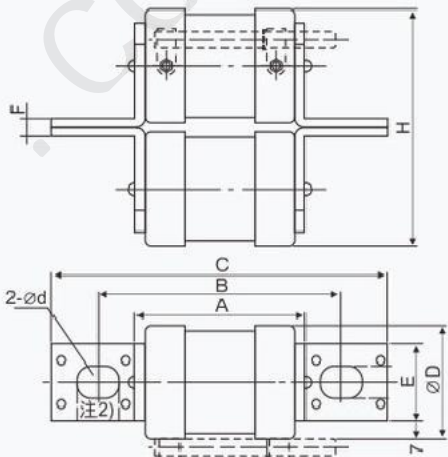
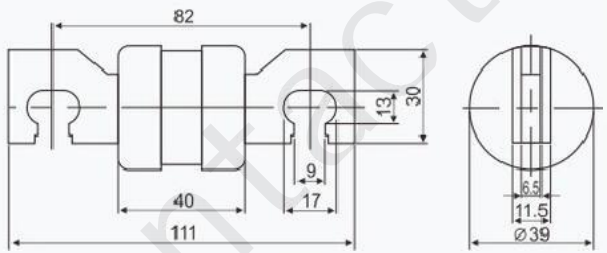


图6.7

Note: 1) root 2) 7 Y open mouth, type above is the production of product virtual line can be added to melt. Broken impactor "z", please order, add "Z" at the tail of the model.

电流 (A)	重量 (g)
507	

No. fuse size, quota size (mm) weight
Common (gG) fast (aR) common (gG) fast (aR) (V)
0545 RG8M RGS8M415 / 55080-315 is detailed in Figure 6.9



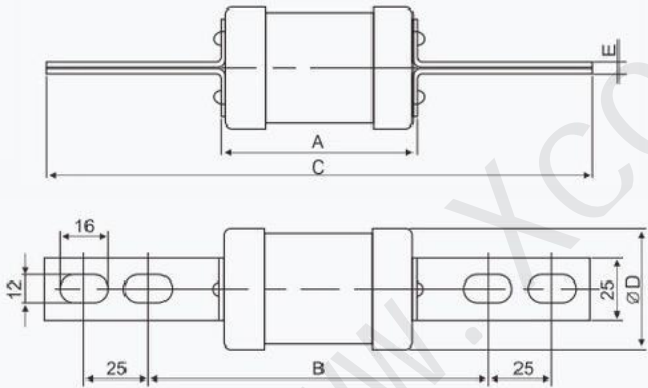
graph 6.9



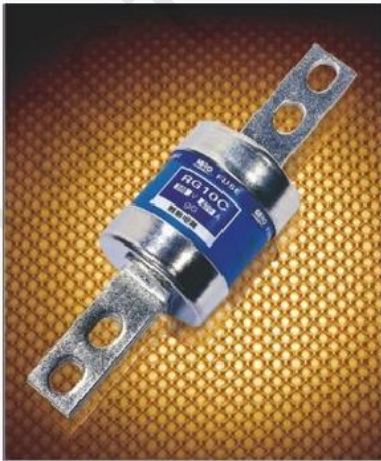
MiRO. Moss melt

续表6

No.	Fuse size number rated	Company domestic and foreign similar products voltage	rated current (A)	Overall dimensions (mm)	重量 (g)
0546	RG10C RGS10C	500/1000	355-4006.10	33210	60
0547	RG10D RGS10D	80500/1000450-6306.1082		133210	76

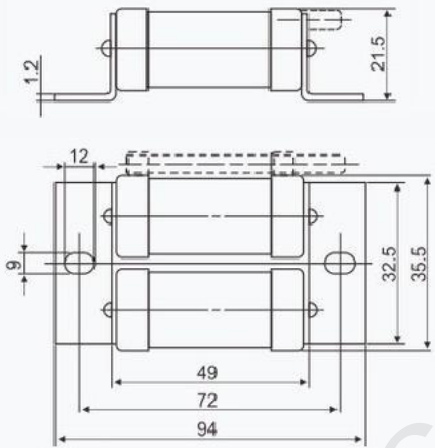


graph 6.10



续表6

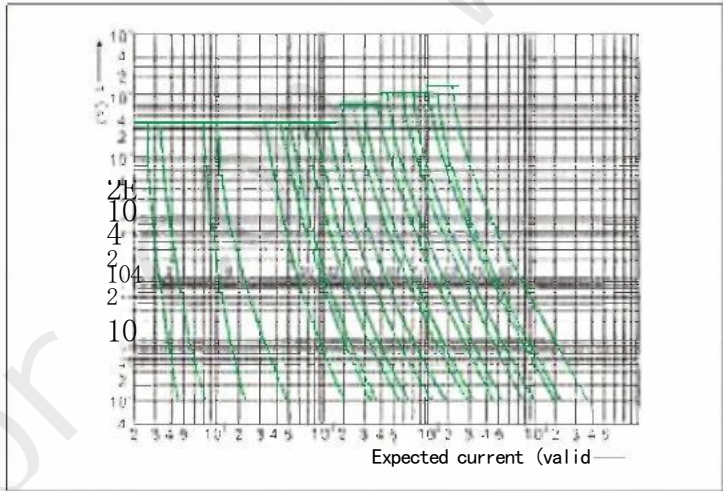
No.	Fuse size number rated	Company domestic and foreign similar products voltage	rated current (A)	Overall dimensions (mm)	重量 (g)
0548	RG 44 (Z) RGS 44 (Z) GSG 690 / 100075~160	See Figure 6.11 for details			78



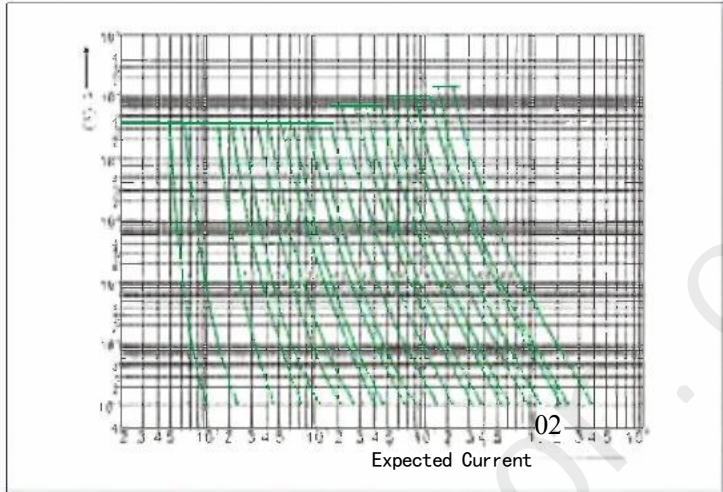
graph 6.1



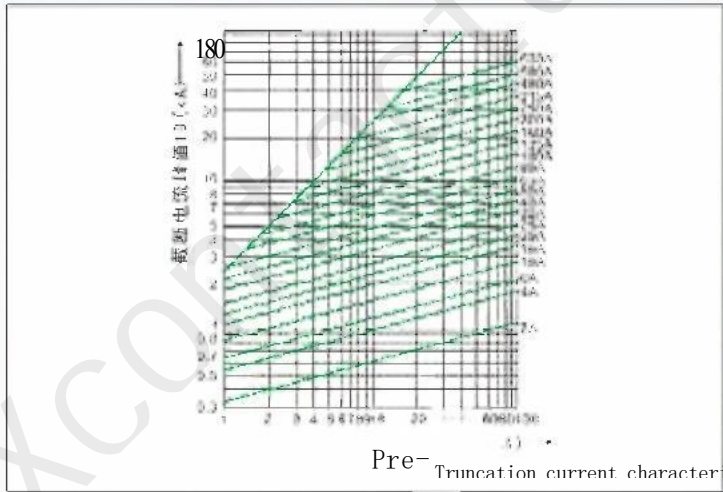
特性曲线



Time-current band of the "gG" fuse body

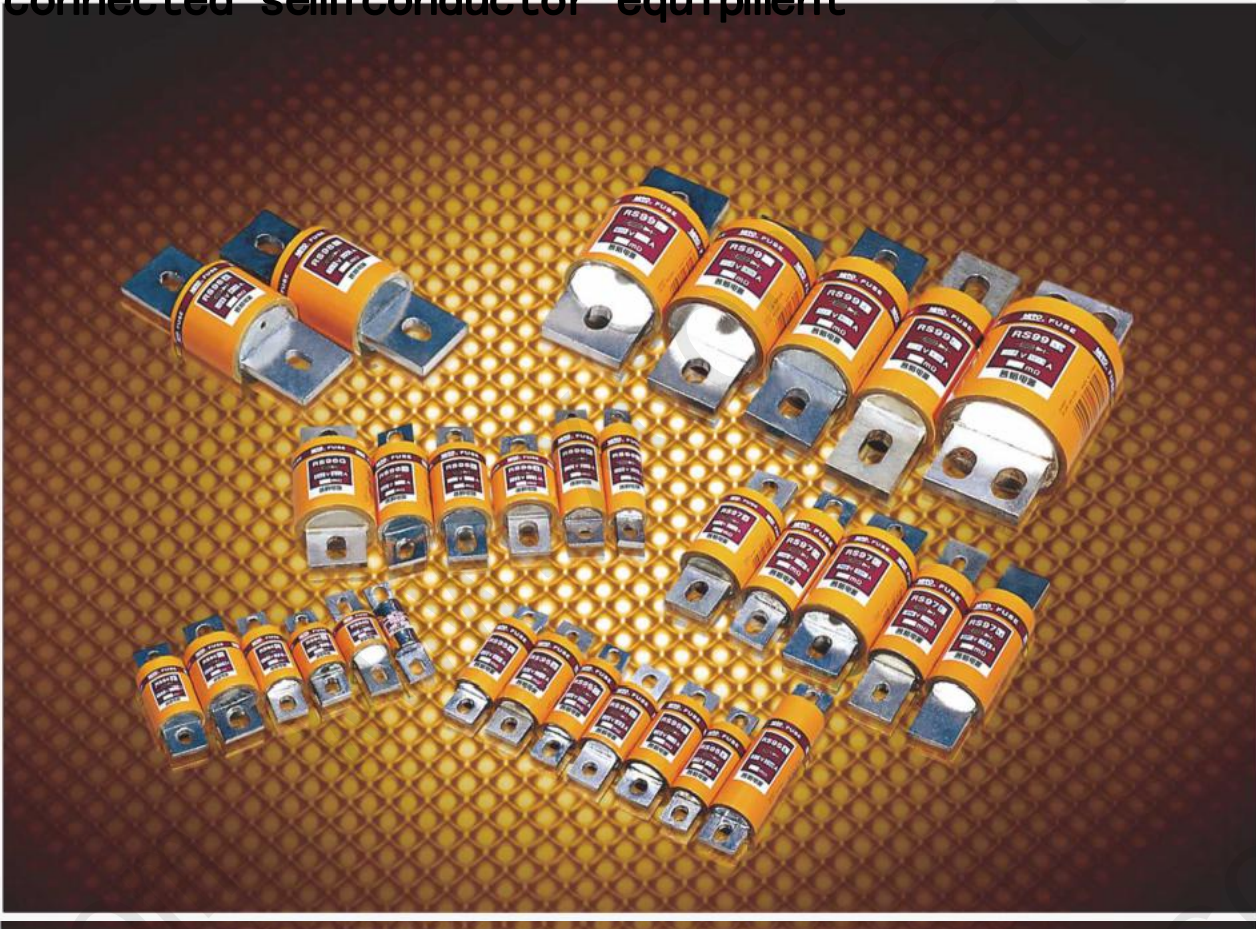


Time-current band of the "gG" fuse body



Pre-Truncation current characteristics of the "gG" fuse body

Fast fuse body for protection of round pipe bolt-connected semiconductor equipment



USE
This series of fuse body is suitable for AC 50Hz, rated voltage to 1200V and volume Fixed current to 1250A, mainly used in electrical wire as short circuit protection (aR) for semiconductor equipment

The rated breaking capacity of this series is up to 100 kA.

The circuit breakers of this series meet the national standards GB13539.1, GB / T13539.4 and the standards IEC60269-1 of the International Power Working Commission and IEC60269-4.

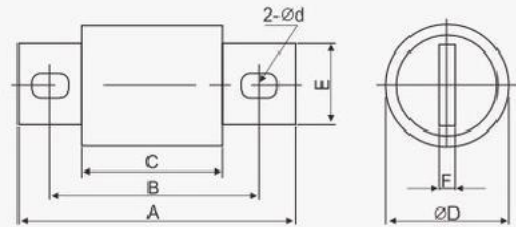
design feature
The variable section melt made of pure silver sheet is encapsulated in a melt tube made of high temperature-resistant epoxy glass tubes filled with chemically treated high purity quartz sand as an arc extinguishing medium. The two ends of the melt are firmly electrically connected with the touch knife (head).

This series of products can also be derived from motor short circuit protection (aM) products, as well as some line full range overload and short circuit protection (gG / gL) products.

base data

Fusing body number, external size, rated voltage and rated current are shown in Figure 7.1~7.6 and Table 7;

序号	Product model	rated voltage (V)	rating (A)	外形尺寸 (mm)							重量 (g)	
				图号	A	B	C	ØD	E	F		Ød
0601	RS94A	250	40-200	7.1	70	52	32	28	22	5	8.2×12	98
0602	RS94C	250	40-200	7.1	80	62	42	28	22	5	8.2×12	106
0603	RS94D	250	30-200	7.1	80	57	26	29	22	5	8.2×12	120
0604	RS94E	250	30-200	7.1	80	60	41	31	24	5	8.2×12	142
0605	RS94F	250	40-200	7.1	80	58	38	33	25	5	8.2×12	135
0606	RS94G	250	40-250	7.1	88	62	42	36	26	5	10.2×12	202.5
0608	RS94J	250	40-160	7.1	67	51	26	26	19	3.5	8.2×12	102
0609	RS95A	500/660	50-200	7.1	91	72	54	28	22	5	8.2×12	112.5
0610	RS95B	500/660	50-200	7.1	92	73	54	31	25	5	8.2×12	150
0611	RS95C	500/660	50-100	7.1	92	73	54	26	19	5	8.2×12	114
0612	RS95D	500	100-200	7.1	92	72	45	30	25	5	8.2×12	149
0613	RS95F	500/660	40-200	7.1	92	72	54	31	25	6	8.2×12	155
0614	RS95F	500/660	50-160	7.1	93	75	54	26	19	5	8.2×12	145
0616	RS95G	500/660	50-200	7.1	93	75	53	31	25	5	8.2×12	128
0617	RS95H	250	200-250	7.1	96	70	42	36	26	5	10.2×15	193
0618	RS95K	250	250-400	7.1	98	70	38	47	32	5	10.2×15	320
0619	RS95L	700	100-200	7.1	127	108	89	31	25	5	8.2×12	195
0620	RS95M	500	50-200	7.1	110	81	50	31	25	5	8.2×10	165
0621	RS95N	700	50-160	7.1	128	101	75	25	20	6	10.5×15	172
0622	RS95P	250	250-315	7.1	98	68	41	38	25	6	10.5×18	218
0623	RS95Q	500	50-160	7.1	110	95	75	25	18	5	6.2×10	148
0624	RS95R	700	35-100	7.1	110	84	50	31	25	6	8.2×18	160
0626	RS95T	500/660	100-200	7.1	112	87	52	27	21	5	10×18	210
0628	RS95V	600	100-160	7.1	128	98	60	25	19	3	10.2×15	262
0629	RS95W	500	40-200	7.1	129	96	53	34	24	6	12×20	183
0630	RS96A	250	200-300	7.1	100	70	40	40	26	6	10.5×18	230
0631	RS96B	500/660	200-315	7.1	110	83	53	38	26	6	10.5×18	240.5
0632	RS96C	500/660	100-160	7.1	112	92	72	25	20	6	10.5×18	125
0633	RS96D	500/660	75-200	7.1	112	90	60	36	26	5	10.5×18	241
0634	RS96E	500/660	200	7.1	112	93	73	31	25	5	7×9.5	166
0635	RS96F	500/660	200-400	7.1	113	87	70	40	26	6	10.5×15	255
0636	RS96G	500/660	400-500	7.1	114	87	56	51	38	6	10.5×15	437
0637	RS96GK	250	400-500	7.1	97	67	38	51	36	8	11×17	198
0638	RS96H	500/660	200	7.1	117	92	67	28	22	3	7×9.5	132
0639	RS96K	500/660	200-400	7.1	117	80	52	40	32	6	10.5×15	280
0640	RS96L	500/660	50-200	7.1	117	89	57	37	30	6	10.5×15	280
0641	RS96M	500	250-315	7.1	135	113	67	34	20	5	8.2×12	196
0643	RS96P	700	125-200	7.1	130	90	50	38	25	6.3	10.5×26	250
0644	RS96Q	250	315-400	7.1	100	71	38	43	35	9	10.5×15	195
0645	RS96R	500/660	35-300	7.1	113	83	53	40	30	6.5	12.2×18	197
0646	RS96S	250	40-200	7.1	95	68	40	27	20	5	9×18	153
0647	RS97A	500/660	300-500	7.1	120	90	58	46	32	6	10.5×18	450
0648	RS97B	500/660	50-200	7.1	126	100	74	38	26	6	10.5×18	295
0649	RS97C	500/700	350-500	7.1	128	98	70	51	38	6	10.5×18	460
0650	RS97D	500/700	200-315	7.1	130	98	72	38	26	6	10.5×18	288
0651	RS97F	500/660	200-315	7.1	145	111	77	38	29	5	7×11	300
0652	RS97F	500/660	200-400	7.1	145	105	76	41	28	8	10.5×18	355
0653	RS97G	500/660	200-400	7.1	146	110	76	41	29	5	7×11	341
0654	RS97H	500/660	200-400	7.1	146	110	75	48	36	8	12.5×18	520
0655	RS97K	500/660	200-400	7.1	130	100	70	53	42	8	14.2×18	480
0656	RS97L	500	200-400	7.1	125	103	48	51	38	6	10.5×18	420
0657	RS97M	500	400-500	7.1	145	102	53	51	38	6.3	14.5×30	465
0658	RS97N	500/660	200-315	7.1	145	113	88	38	25	6.3	10.5×18	353



MiRO. Moss melt

High_&Low Voltage Fuse
AnpdplFi eCombined Electrical

续表7

To the rated voltage and the rated current		外形尺寸 (mm)										重量
图号		A	B	C	∅D	E	F	∅d				(g)
		(V)	(A)									
0659	RS98A	500	600	7.1	165	114	56	64	50	8	10.5×18	635
0660	RS98B	500/660	600	7.1	170	130	80	70	50	6	10.5×18	1280
0661	RS98C	500/660	500	7.1	181	133	86	51	40	10	10.5×18	720
0662	RS98D	500/660	600	7.1	180	131	85	64	50	10	14.2×18	970
0663	RS98E	700	250-400	7.1	130	90	50	51	38	6.3	14.2×28	450
0664	RS98F	700	300-400	7.1	181	130	72	64	50	10	14.2×28	780
0665	RS98G	700	400-600	7.1	175	135	73	63	51	10	12.5×18	1135
0666	RS98H	700	400-500	7.1	166	118	70	50	38	6	16.2×22	583
0667	RS98K	700	500-600	7.1	181	114	50	64	51	9.5	14.2×45	996
0668	RS98L	700	500-800	7.1	167	137	72	70	50	8	10.5×18	1100
0669	RS98M	700	500-600	7.1	160	108	53	63	50	9	14.2×23	925
0670	RS98N	700	500-600	7.1	180	125	73	60	46	13	14.2×25	1050
0671	RS98P	500	400-500	7.1	110	80	53	50	40	6	10.5×18	410
0672	RS99A	500/660	500-600	7.1	190	140	90	65	50	10	14.2×18	1058
0673	RS99B	500/660	400-600	7.1	203	152	95	64	50	10	10.5×18	1410
0675	RS99D	500	800-1000	7.1	180	127	85	76	61	11.3	0.5x18 6x22	1786
0676	RS99F	700	800-1250	7.1	200	150	100	90	70	13	20.5×30	1920
0677	RS99F	700	400-600	7.1	180	129	72	64	51	9.5	3.5×13	1200
0678	RS99G	700	800-1000	7.1	195	150	95	75	61	10	3x18830	
0679	RS99H	500	500-600	7.1	145	103	46	52	38	8	15×29	60
0684	RS97 RST3	500/700	15500	7.1	112	84	52	46	32	8	11×14	68
0686	RS99 RST3	500-00	001200	7.1	179	129	82	76	52	10	8×3	1650
68	RS99 RS	1000	800 12007.	93	46	98	73	52	10	16x31		916

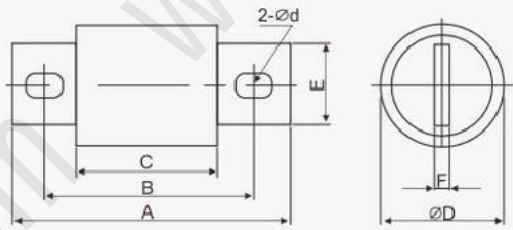
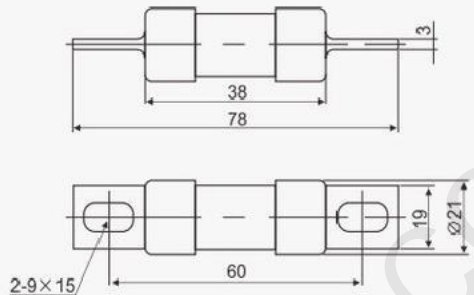


图7.1

续表7

产品型号	电压	额定电流	外形尺寸 (mm)	重量
图号	(V)	(A)		(g)
0688RS94B graph 7.2	200	40~100	详见	55

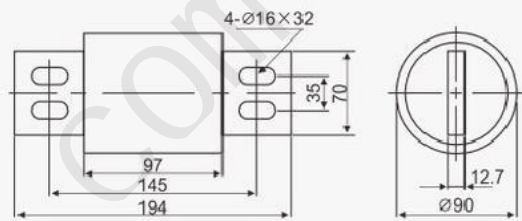


graph 7.2



续表7

No.	Product model	Rated voltage	Rated current	外形尺寸 (mm)	重量
图号		(V)	(A)		(g)
0689	RS9	9AP	700	1000	2100

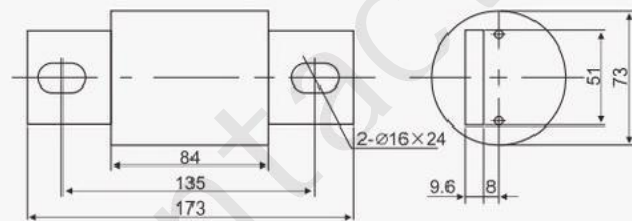


graph 7.3



续表7

产品型号	电压	额定电流	外形尺寸 (mm)	重量
图号	(V)	(A)		(g)
0692	RS99PX	700	1000	1652



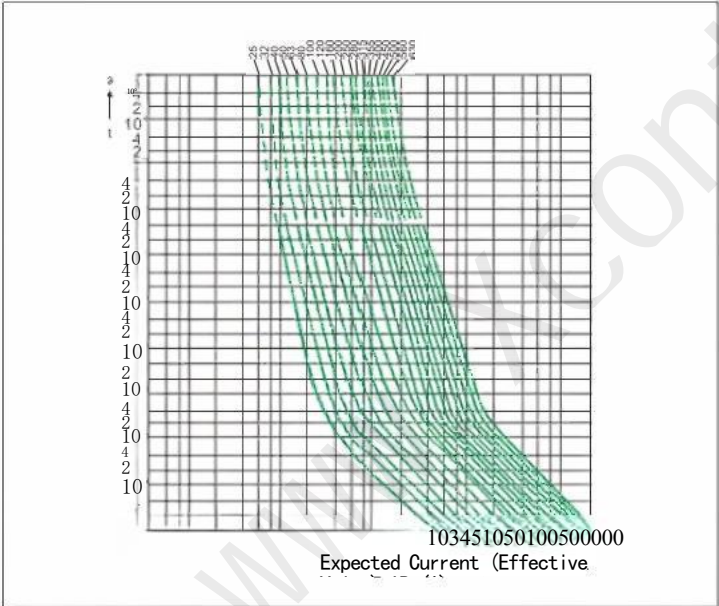
graph 7.6



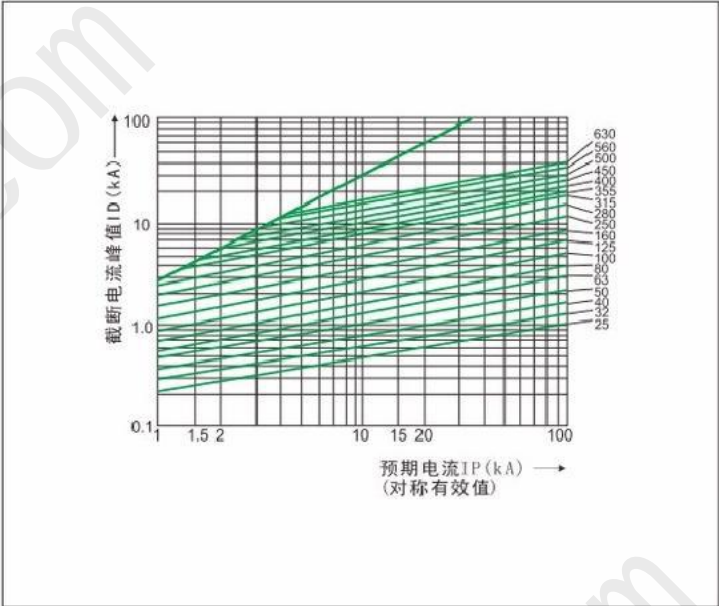
MiRO. Moss melt

io es&sLioonI Votanguef atuusrerfor
Aapd lie Combined Electrical gh W P p H s

特性曲线



Time-current characteristic curve
of protective (fast) fuse used for



Truncated current characteristic
curve of the protective (fast type)
fuse body for semiconductor
equipment

Fast fuse body for protection of square pipe bolt-
equipment



use

This series of fuse body is suitable for AC 50Hz, rated voltage to 2000V, and rated current to 2500A. It is mainly used in electrical lines as short-circuit protection for semiconductor equipment (aR).

The rated breaking capacity of this series is up to 100 kA.

The circuit breakers of this series meet the national standards GB13539.1, GB / T13539.4 and the standards IEC60269-1 of the International Power Working Commission and IEC60269-4.

design feature

The variable section melt made of sterling silver sheet is encapsulated in a melt tube made of high strength porcelain filled with chemically treated high purity quartz sand as an arc extinguishing medium. The two ends of the melt are firmly electrically connected with the contact. There are two types of square tube knife contact and square tube flat contact. The fuse can be equipped with an indicator or impactor. When the fuse fuse, the indicator / impactor acts immediately to show that the fuse has been fused (indicator) and pushes the microswitch (impactor) to send various signals or automatic switching circuits.

base data

No., external dimension, rated voltage and rated current are shown in Figure 8.1, 8.16 and Table 8;

Note: The fuse size and specific parameters of this series are for reference only. For details, please consult regional sales or local agents.

表8														
序号	熔断器型号		额定电压 (V)	额定电流 (A)	外形尺寸 (mm)									重量
	本公司	国内外同类产品			图号	A	B	C	D	E	F	H	øD	(g)
0701	RS6-00	NGT00RS711BHL500	380/800	32~160	8.1	50	77	100	29	27	2	52	11	198.5
0702	RGS30A	3NE87	590	10~100	8.1	50	77	98	21	20	2	42	9	122
0703	RGS30B		590	10~100	8.1	50	77	98	21	20	2	37	9	110
0704	RGS30C	RS0-250V	250	10~100	8.1	50	100	115	25	16	2	45	7	138
0705	RGS30C	RS0-500V RS3-500V	500	10~100	8.1	70	120	135	25	16	2	45	7	163

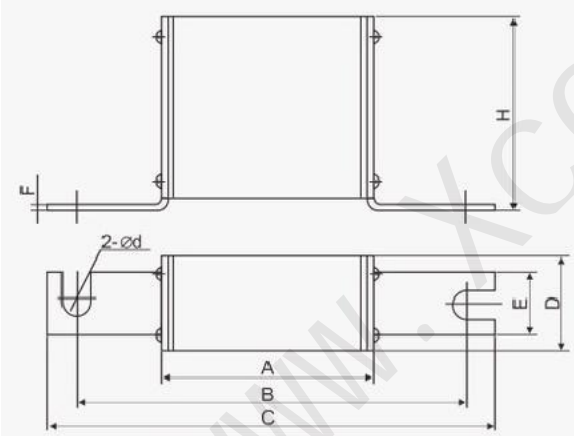


图8. 1

要标志标 做为我司

型号为

序号	外形尺寸		E	F	H	Ød	重量
	图号	A B熔断					
0706	RGS3	100 120 40	202	489	12		4
0708	RG	55 25					542
0709	RGS33	00 130 58	405	72		4×20	950
0710	RGS34	14040	218			x12	336
0711	RGS36	14548	360				5
0712	RGS32	201505	405	72			482
0713	RGS33R	2015567	405	72			670
0714	GS34						1058
0714	RGS39	RS3500750500~10008 279145185865059018×28					1760

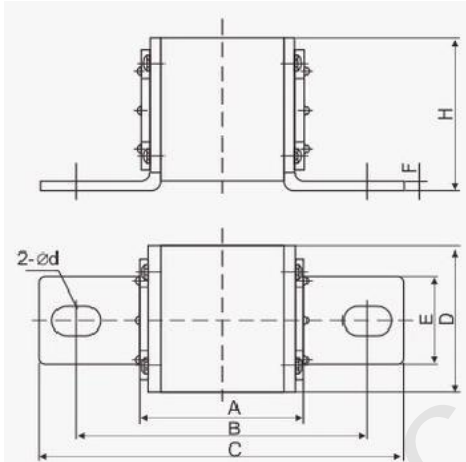


图8. 2



体型号
内外同
0715RGS39

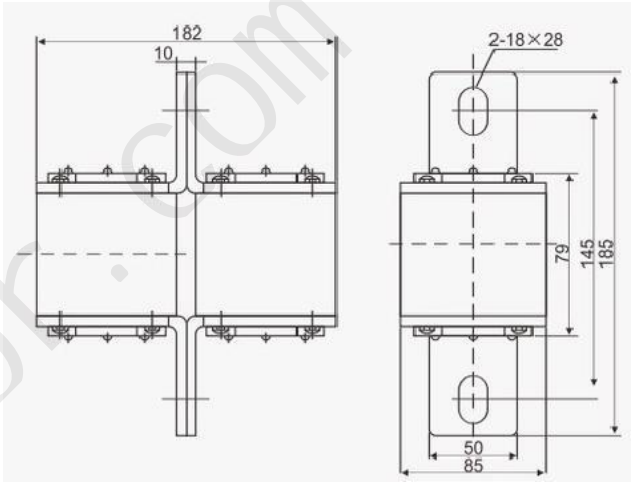


图88. 3

序号
0716
071

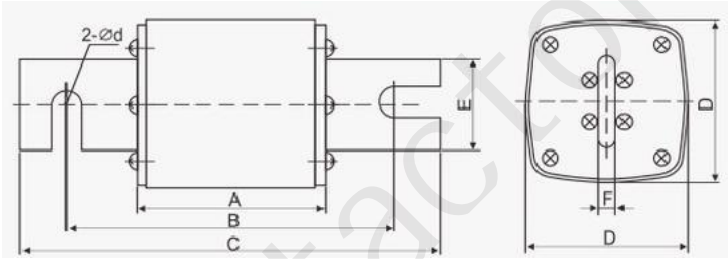


图88. 4

rofessional Manufacturer for
ighF&sLocwoVoitage Fuse



表G														
序号	熔断器	国内/外	额定电压 (V)	额定电流 (A)	外形尺寸 (mm)								重量 (g)	
	本公司				图号	A	B	C	D	E	F	H	Od	
		类产品												
720	NGT10		690	1000	8.6	68	108	140	14	20	6	58	10.5	465
0721	RS	540	690	1000	8.6	68	108	140	14	32	6	78	12.5	730

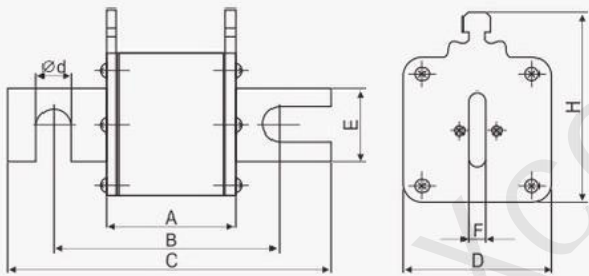


图8.6



图号												重量			
本公司		国内同类产品(V)		额定电流	图号				Od						
					A B C D										
0722	RS72B	A1-66C-D869		4008.744	7081405				50	25	6	68	10.5	360.5	
0723	RS72C	A1-66C-D869		21544	76108				50	25	6	10	10.5	383	
0724	RS73A	A1-66C-D1690		506308.744	08140				60	32	6	78	10.5	527	
0725	RS73B	A1-66C-D1690		690	12760				32	6	78	3	551		
0726	RS73D	A1-66C-D1690		4008.744	92108				73	32	6	78	550		
0727	RS74A	A1-66C-D1690		8.744	768140				73	38	6	90	12.5	810	
0728	RS74B	A1-66C-D1690		008.744	92127				73	6	90	13	944		
0729	RS74C	A1-66C-D1690		8008.760	108140				60	32	6	78	12.5	700	
0730	RS74D	A1-66C-D1690		008.744	108140				60	32	6	78	12.5	770	
0731	RS75B	A1-66C-D1690		8008.760	1407238				6	90	2	10.5	1435		
0732	RS76AYK	170M6		001000630	8008.766				108	140	32	6	78	12.5	770
0733	RS76C	170M62		08000630	8008.776108				1407238	6	90	2	10.5	1435	

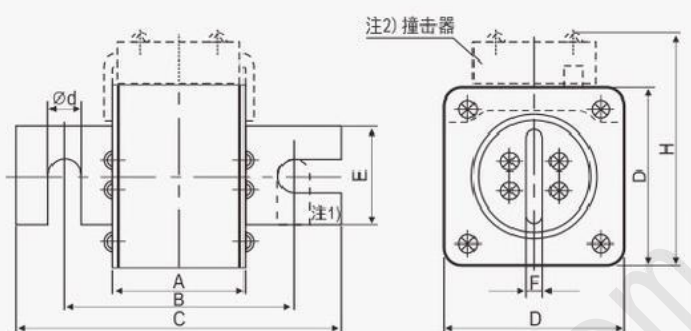
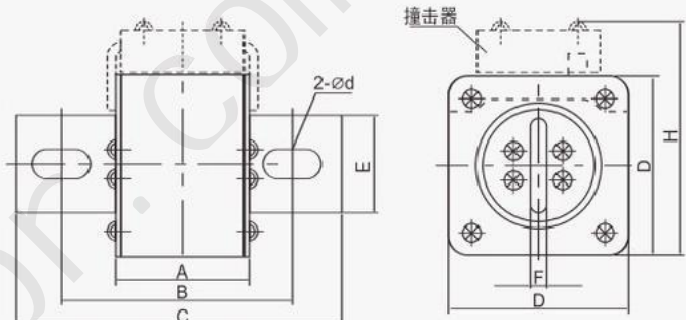


图8.7

注 (1): RS73D、RS74D触刀开口型式为虚线所示;
注 (2): 需配撞击器在型号尾加 “Z”



图号: 表B														
序号	熔断器型号 本公司	国内外同 类产品	额定	额定	外形尺寸 (mm)							重量		
			电压 (V)	电流 (A)	r	B	C	D	F	F	H	ϕd	(g)	
073	RS76A		690/1000	500-800	8.8	68	102	140	72	38	6	90	12.5×22	1055
0738	RS76B		690/1000	800-800	8.8	68	108	140	72	38	6	90	12.5×22	1040
	RS89B		1000	1600	8.8	70	107	180	10	16	120	14×23		

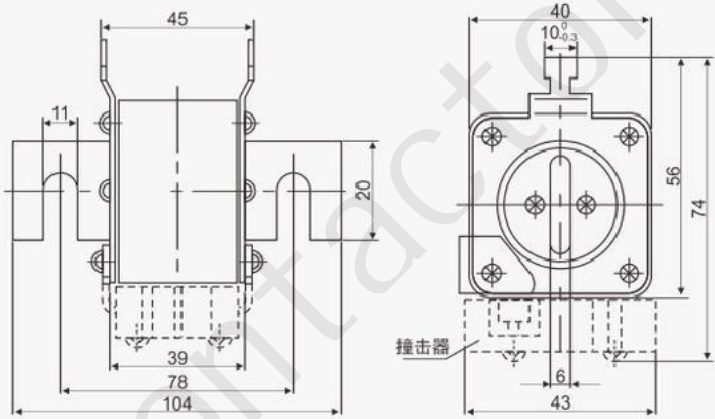


graph 8.8

Note: "Z" should be added at the end of the model



表B						
序号	熔断体型号		额定电压 (V)	额定电流 (A)	外形尺寸 (mm) 图号	重量
	本公司	国内外同 类产品				
073	RS72A	同	690	1000	8.6×68×108×140	(g) 238



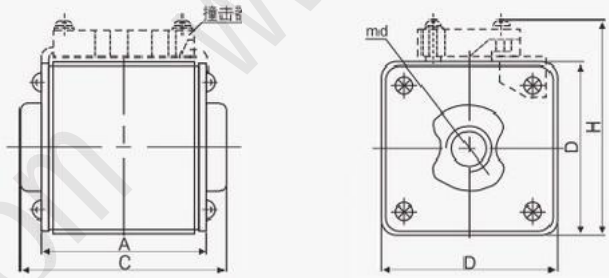
graph 8.9

Note: Impactor should be equipped with "z" at the end of the model



续表8

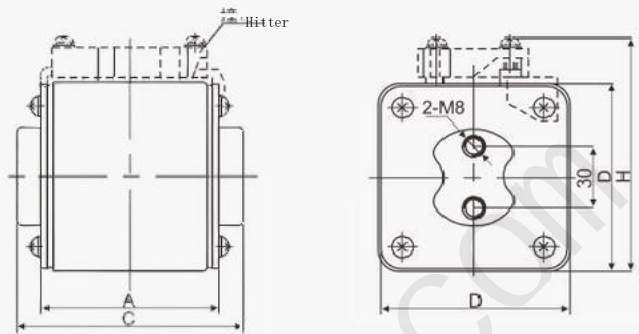
序号	熔断体型号		额定电压 (V)	额定电流 (A)	外形尺寸 (mm)						重量 (g)
	本公司	国内外同类产品			图号	A	C	D	H	md	
0740	RS550		2000	250~550	8.10	130	136	74	73	12	1960
0741	NGT3M		400/690/1000	355~630	8.10	67	76	67	85	12	910
0742	RS77	A1-66C-TS	690	200~400	8.10	42	51	50	68	8	354
0743	RS77A	A0-66C-TS	690	80~160	8.10	42	51	40	58	8	225
0744	RS77B	A2-66C-TS	690	400~630	8.10	42	51	60	78	10	518
0745	RS77C	A3-66C-TS	690	630~1000	8.10	45	54	74	92	12	865
0746	RS77H		1000	200~400	8.10	66	76	50	68	8	528
0747	RS78	3NE43.6B	690	315~500	8.10	66	77	60	77	10	660
0748	RS79		1000	400~1000	8.10	92	106	74	92	12	1655
0749	RS79A	170M34	690	200~400	8.10	46	52	43	61	8	277
0750	RS79C		1000	400~1000	8.10	77	85	74	92	12	1325
0751	RS79D	140M63	1000	800~1000	8.10	67	75	74	92	12	1170
0752	RS79E	170M64	1000	630~1000	8.10	87	95	74	92	12	1420
0753	RS550(Z)		2000	250~550	8.10	135	143	74	92	12	1985
0754	RS82	CS5F	500	75~200	8.10	40	47	47	70	8	325
0755	RS83	CS5F	500	200~400	8.10	43	51	57	82	8	450
0756	RS84	CS5F	500	450~630	8.10	42	53	72	92	10	830
0757	RS85	CS10F	500	200~630	8.10	66	76	60	77	10	740
0758	RS86	3NE64	500	300~700	8.10	66	77	72	92	10	1110
0759	RS86A(Z)	RSF-4	500/800	800~1250	8.10	68	78	85	130	12	1200
0760	RS86H		1000	300~700	8.10	86	98	72	92	10	985
0761	RS87	RSF-5	500/800	1250~1600	8.10	70	80	105	150	16	1320
0762	RS87	RSF-5	1000	1250~1600	8.10	80	90	105	150	16	1650
0763	RS87A(Z)		250	1600~2500	8.10	51	61	120	165	16	1985
0764	RS87A(Z)	RSF-5	500/800	1600~2500	8.10	71	81	120	165	16	2216
0765	RS87A(Z)	RSF-5	1000	1600~2500	8.10	81	91	120	165	16	2356
0766	RS88A	RSF-5	690	800~1600	8.10	78	90	105	127	16	1240



Note: Impactor should be added with "Z" at the end of the model

续表8

order number	熔断器型号		额定电压 (V)	额定电流 (A)	外形尺寸 (mm)					重量 (g)
	本公司	国内外同类产品			图号	A	C	D	H	
0767	RS86-2M8		500	300~700	8.11	66	77	72	92	1110
0768	RS86H-2M8		1000	300~700	8.11	86	97	72	92	2255



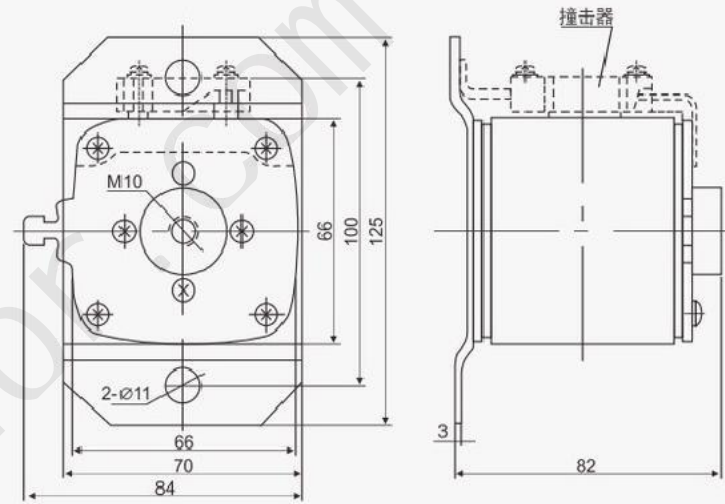
graph 8.11

Note: Impactor should be equipped with "Z" at the end of the model



续表8

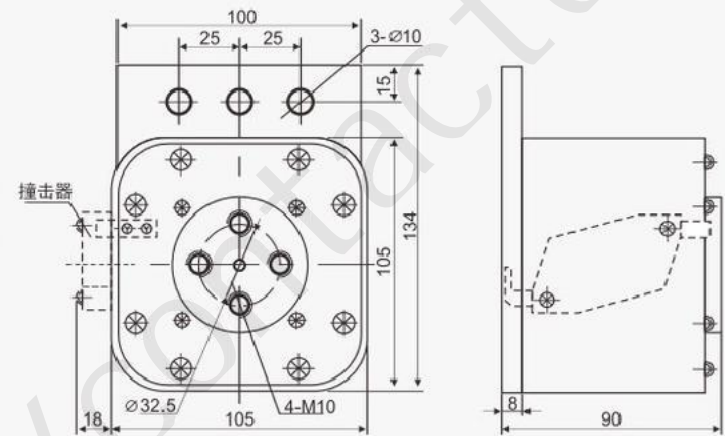
序号	熔断器型号		额定电压 (V)	额定电流 (A)	外形尺寸 (mm)		重量 (g)
	本公司	国内外同类产品			图号		
0769	RS88		690	630~800	详见图 8.12		955



graph 8.12

Note: "Z" should be added at the end of the model

word size	熔断器型号		额定电压 (V)	额定电流 (A)	外形尺寸 (mm)		重量 (g)
	本公司	国内外同类产品			图号		
0770	RS89Z		1000	1000~1600	详见图 8.13		2930



graph 8.13

Note: Impactor should be added with "Z" at the end of the model



表8									
Serial number punishment only forehead page fixed from people one									
图号									
Includes after A 国内 电压 电流 图号 C D E 重量									
类 产品 (V) (A) (g)									
72	RS79D-2P	1000	800	00080	2508.14	147492	2460		

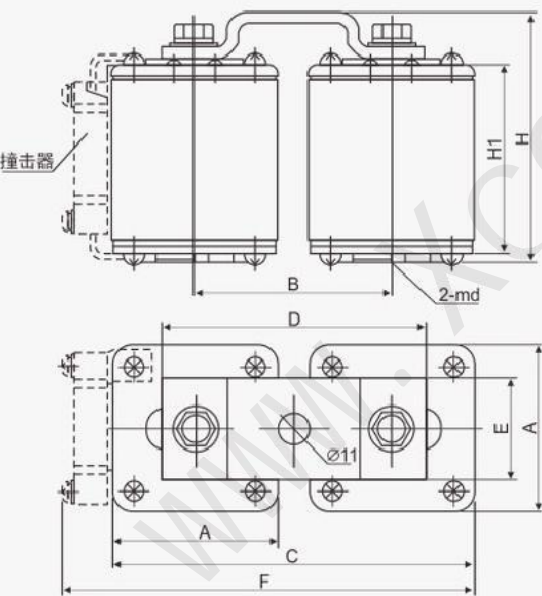
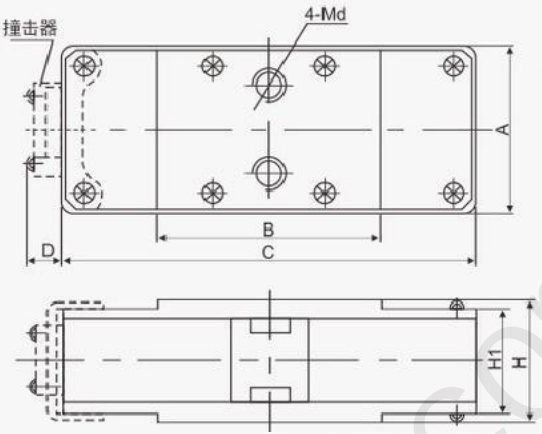


图 8.14

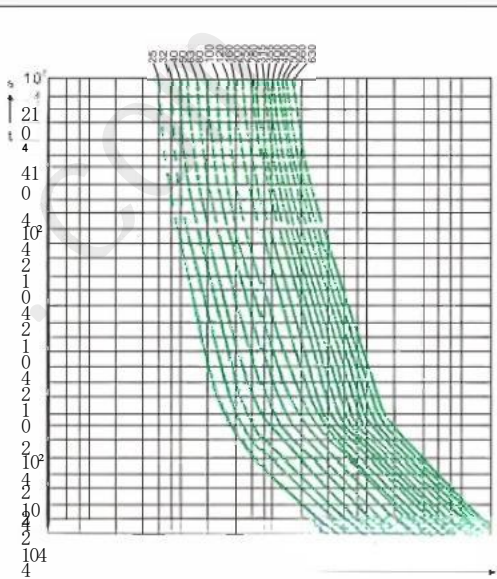
续表8									
序号	熔断器型号	额定电压	额定电流	外形尺寸 (mm)					
	本公司	国内外同类产品	(V)	(A)	图号	A	B	C	D
776	RS77C-2M	690 1000-2000	8.15	75	100	185	18	55	47
777	RSH20	2000 1000-2000	8.15	75	80	165	18	140	132
778	RS79D-2M	1000 1000-2000	8.15	75	80	165	18	78	70



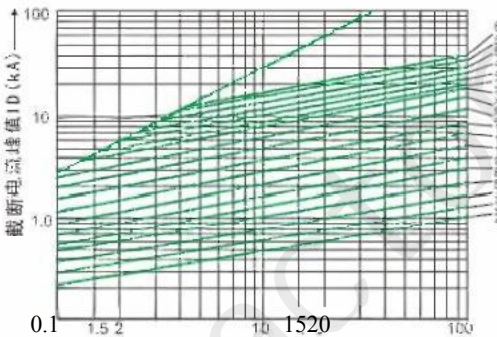
graph 8.15



特性曲线



Time-current characteristic curve of the protective (fast)



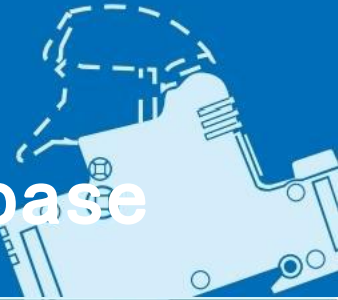
Pre-weighing effective value kA -

截断电流特性曲线 (Fast type) fuse body

low voltage fuse
Low Voltage Fuse

Professional High VoltageAnd LowVoltage Fuse Manufactu rer

Fuse support piece / base



Cyder cap fuse support / base



低压熔断器
熔断器座



use

This series of fuse support parts is suitable for AC 50Hz, rated insulation voltage to

6.9/8No 12g AG main A, A in R) of the middle body for the support size code. This series of fuse support parts have the ability to withstand agreed heating current and expected short-circuit shock current to 100 kA dynamic heat stability, and have the function of isolating power supply after multi-phase combination. The model RT18N fuse support has one upper and lower lines, which has the function of isolating power supply; RT18L has a safety lock device, which can lock the load melt in the disconnected state to ensure no misoperation; It can also carry a fuse indicator that the fuse body has been fused.

The fuse support components of this series comply with national standards GB13539.1, GB / T13539.2 and international electrical work committee standards IEC60269-1 and IEC60269-2.

design feature

This series of fuse support parts consists of plastic pressed shell with contact and melt parts, riveting or welding, can be composed of multi-phase structure. FB 15 C, FB 16-3J, RT19 are open type, and other models are semi-closed structure. among

RT18N and RT18B are on the base of the same dimension, allowing users to choose five fuse types of different sizes; RT18N has two entry and exit lines, one fuse with the corresponding size; the other one is a double breakpoint contact, a single support has the function of isolating power supply; RT18 support parts are TH35mm guide installation, including RT18L also has a safety lock device to ensure that the disconnection of the support without misoperation.

base data

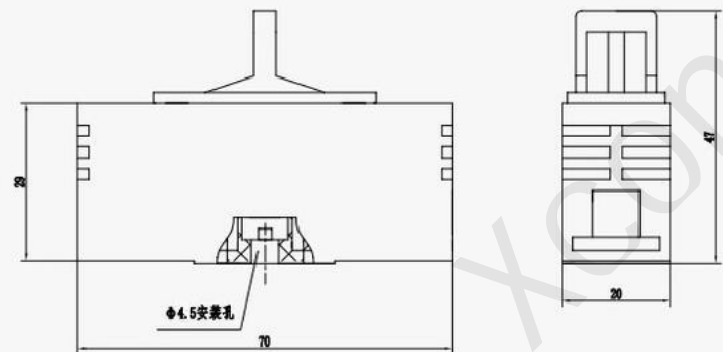
See 9.1~9.14 for product model, rated insulation voltage, agreed heating current, configuration cylinder cap fuse size, shape size, and Table 9 (n phase combination width B=nB);

matters need attention

Due to the high fast melting power consumption and temperature rise, the maximum accepted power of supporting parts should be considered when selecting supporting parts. It is recommended to choose semi-closed or open structures such as RT19 series; RT18 series is not recommended.

MiRO. Moss melt

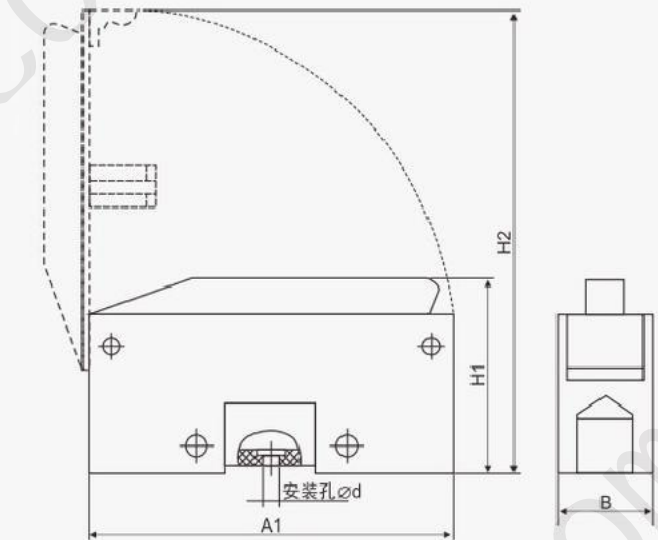
表9					
order number	product	熔断器	Conformed	尺寸 (mm)	重量
	Size	(A)	Current chart number		(g)
RT14-20	1038	20	20	螺钉安装孔 ϕ 4.5 详见图9.1	38



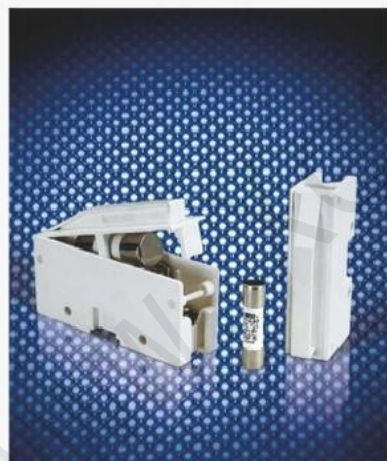
graph 9.1



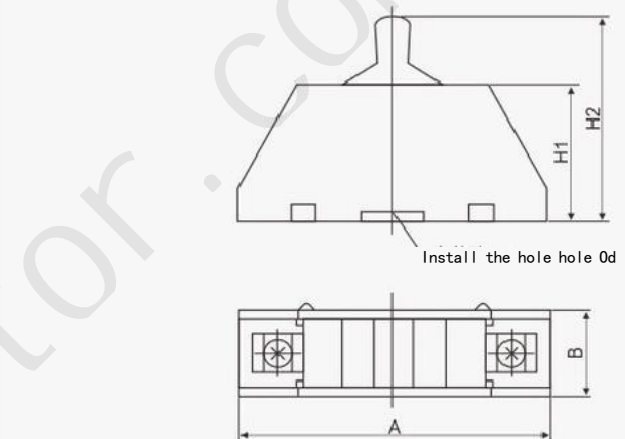
续表9										
No. Rated insulation and distribution technology, small shaped people										
产品型号	配装熔断体	尺寸	电压 (V)	电流 (A)	电阻 (m)	B	H1	H2	ϕ d	重量 (g)
RT14-32	14x51	32	9.2	105	26.5	57	135	5.5	148	
RT14-63	22x58	63	9.2	125	35	66	158	5.5	241	



graph 9.2



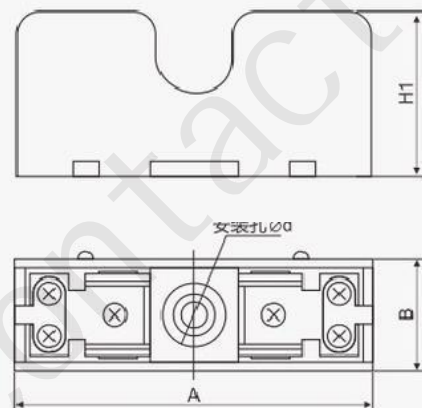
续表9										
order number	产品型号	配装熔断体	额定电压 (V)	额定功率 (W)	外形尺寸 (mm)	图号	A	B	H1	重量 (g)
RT19-16	8.5x31.5	16	9.3	69	18.5	28.5	41.5	5	34	
RT19-25	10x38	25	9.3	80	23	35	53	6.5	57	



Install the hole hole ϕ d

续表9										
order number	Production type	配装熔断体	额定电压 (V)	额定功率 (W)	外形尺寸 (mm)	图号	A	B	H1	重量 (g)
RT19-40	14x51	40	9.4	91	28.5	40	5.5	78		
RT19-100	22x58	100	9.4	108	36	50	6.5	157		

908 RT19-100



graph 9.4

Professional Manufacturer for High&Low Voltage Fuse and FuseCombined Electrical Appliance..

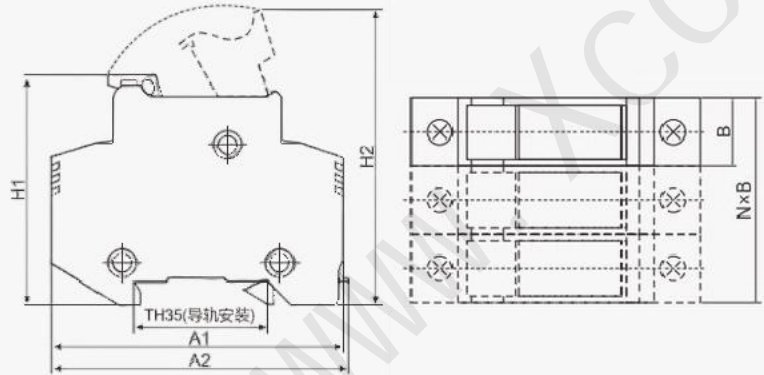


低压熔断器
熔断器座



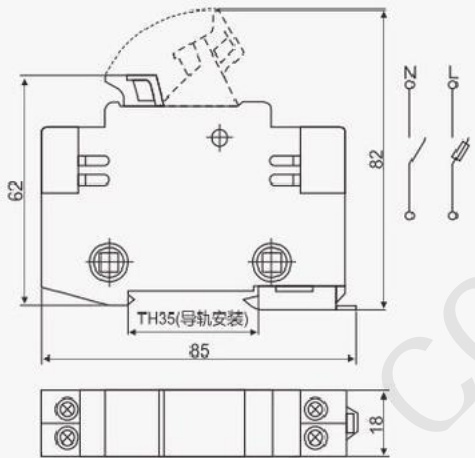
MiRO. Moss melt

续表9											
No.	Product type	配套熔断体 Size	Rated intermitte nt voltage (V)	2. Set the current (A)	外形尺寸 (mm)						重量 (g)
					图 号	A1	A2	B	H1	H2	
090)	RT18-32(X)	10×38	690	32	9.5	79	81	17.5	61	80	59
0910	RT18B-10	8.5×23	690	10	9.5	80	82	18	60	78	59
0911	RT18B-16	10×25.8	690	16	9.5	80	82	18	60	78	59
0912	RT18B-20	8.5×31.5	690	20	9.5	80	82	18	60	78	59
913T18B	25	10×31.5	690	25	9.5	80	82	18	60	78	59
914	RT18B-32	10×38	690	32	9.5	80	82	18	60	78	59
91510X	RT18C-32	3	690	32	9.5	77	78	18	62	81	56
916T18M	o	2	690	32	9.5	78	81	18	60	80	56
0917	HG30-32	10X3	690	32	9.5	78	80	18	73	88	57
0918	Lower Table 0	G3i514	690	63	9.5	96	99	27	62.5	91	108



graph 9.5

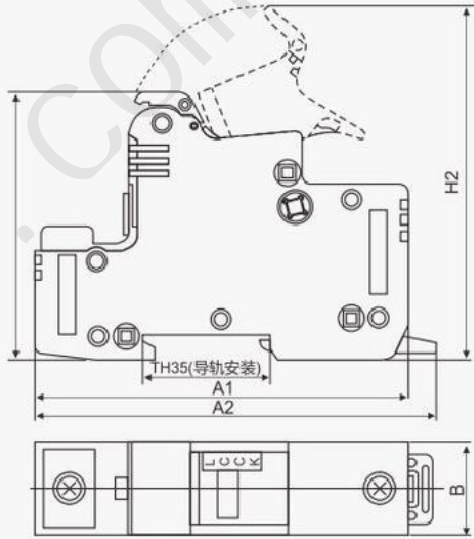
续表9						
No.	Product Model	配套熔断体 Size	Rated absolutel (V)	Agreed to issue Current chart number (A)	外形尺寸 (mm)	重量 (g)
	RT18N-10	8.5×23	690	10	详见图9.6	70
	RT1	8.5×31.5	690	20	详见图9.6	63
0919			690	32	详见图9.6	62
0923	RT8N-3 ^{3N-2}	10×38				



graph 9.6

Professional Manufacturer for
High&LowVoltage Fuse
Aapnpd li Fa u n s c e e.Combined Electrical

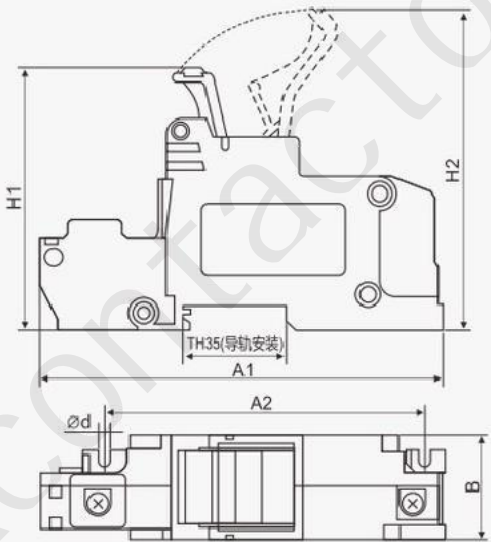
续表9											
order	产品型号	配套熔断体 尺寸	Rated closing (V)voltage	Agreed 电流 (A)	外形尺寸 (mm)					重量	
					More	A	A2	B	H1	H2	
										(g)	
925	RT122x5	14x51	690	63	9.7	108	115	27	78	100	114
		3	90	125	9.7	126	134	36	78	104	182



graph 9.7



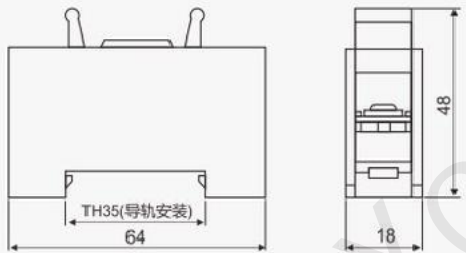
续表9											
order	Product	配套熔断体		Rated terminal (V)	Agreed to send power (A)	尺寸 (mm)				重量 (g)	
		Size				A2	B				
		14×51		690	63	9.8	107	80	27 90	1024.5	167
0927	HG30-125	22x5		690	125	9.8		110			185



graph 9.8



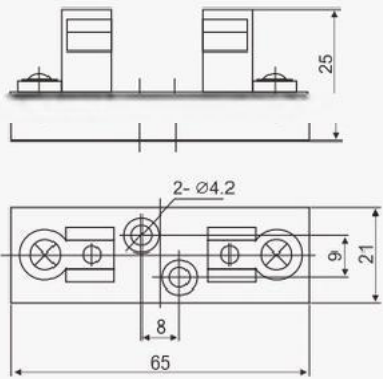
续表9				
No.	Product Model	Ffuse rated insulation cur	重量	
			电压 (V)	(g)
		16		38



graph 9.9



续表9				
No.	grade type	method	fuse total size	重量
			rated voltage (V)	(g)
0929	FB15C10	×38	32	25



graph 9.10



续表9				
orde	The	Conformed fever	外形尺寸 (mm)	
			电压 (V)	(g)
0930	FB 16-	50		140

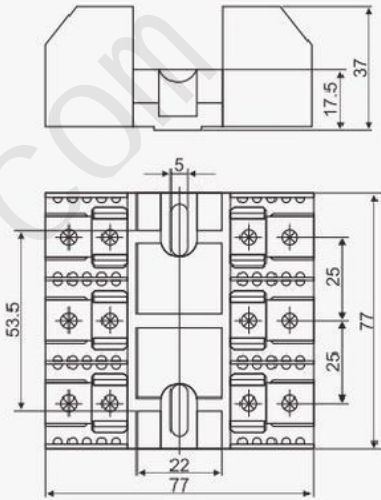
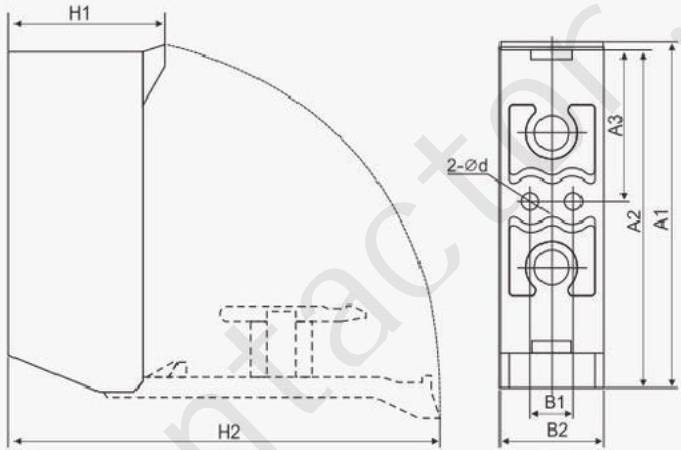


图9.11

No. Product model rated insulation agreed heating, shape ruler ten weight				
Size voltage and current map number A 1A3 B1 B2 H1H2 Od				
0932	ZRB-50	14×51	690	50



graph 9.12



Square tube knife contact insert fuse base



用途

This series of fuse base is suitable for AC 50Hz, rated insulation voltage to 690V. Convened heating current to 1000A, mainly used in electrical lines as size 000~4. Use fuse (gG, aM, aR, etc.). This series of circuit breakers

Stable

The series of fuse base meets the national standard GB13539 and IEC60269.

结构特点

The fuse base of this series is composed of high strength porcelain floor / high temperature resistant resin base and wedge static contact, with an open structure. The product has the characteristics of good heat dissipation condition, high mechanical strength, reliable contact, convenient operation, and can be equipped with all the corresponding sizes of 000~4

base data

See 11.1~11.19 and Table 11 for the product model, rated insulation voltage, agreed heating current, configured fuse body size and external dimensions;

表11

order number	产品型号	配装熔断体尺码	额定绝缘电压 (V)	约定发热电流 (A)	外形尺寸 (mm) 图号	重量 (g)
1101	NT00	000 00	690	160	详见图 11.1	193

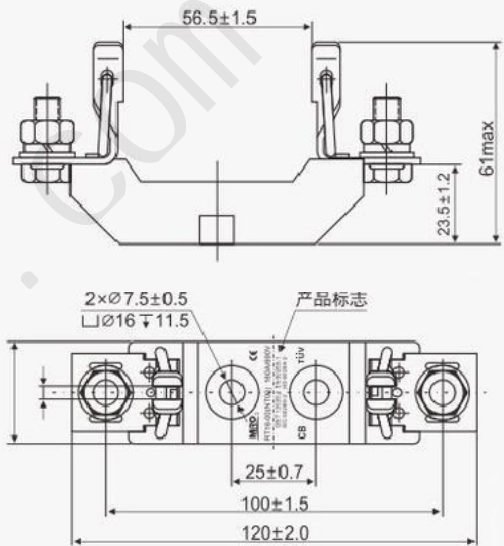


图 11.1

续表 11

order number	产品型号	配装熔断体尺码	额定绝缘电压 (V)	约定发热电流 (A)	外形尺寸 (mm) 图号	重量 (g)
1102	NT	0	690	160	详见图 11.2	295

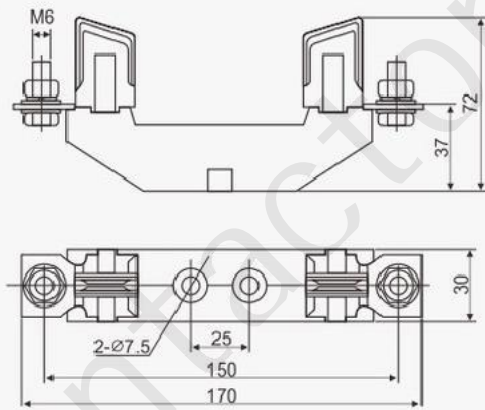


图 11.2



续表11

Seri	product	配装熔断体 尺码	nominal insulati (V)	Agreed to	(mm)	重量
1103	NT1	1	250			5

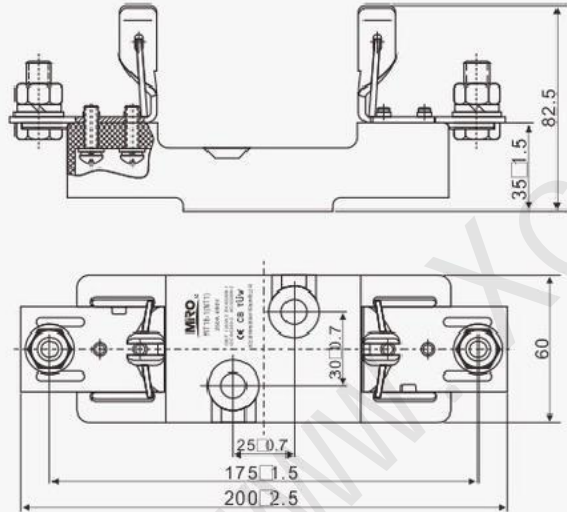
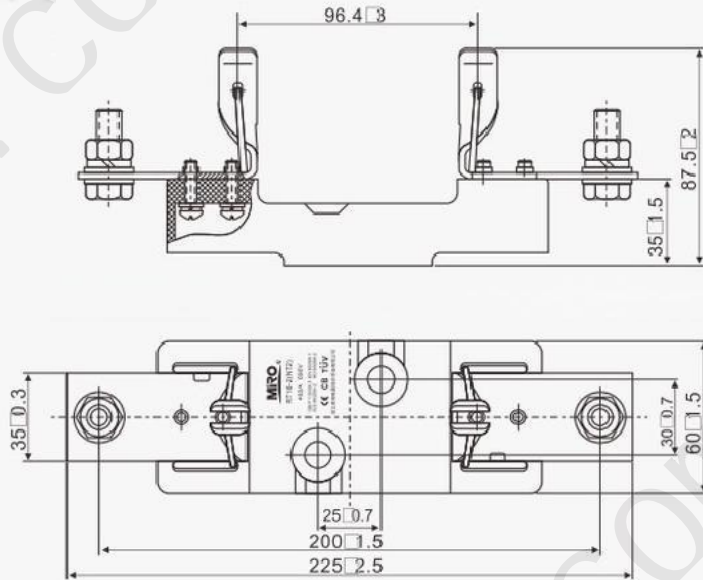


图 11.3

续表11

序号	产品型号	配装熔断体 尺码	额定绝缘 电压 (V)	约定发热 电流 (A)	外形尺寸 (mm) 图号 A1 A2 A3 B1 B2	H1H2	重量
103810010770							



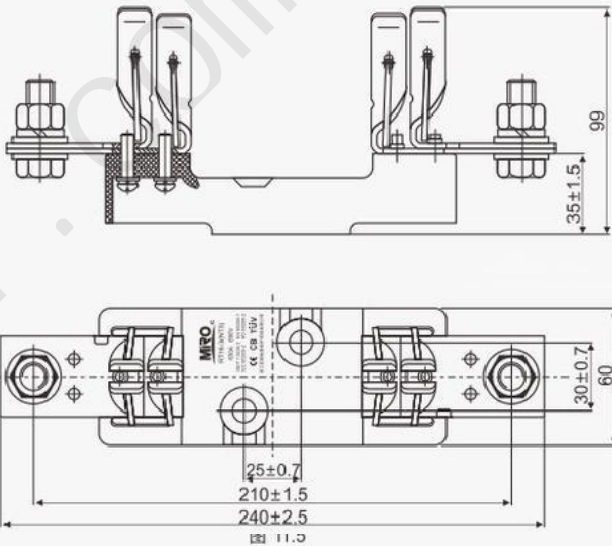
11.4

图



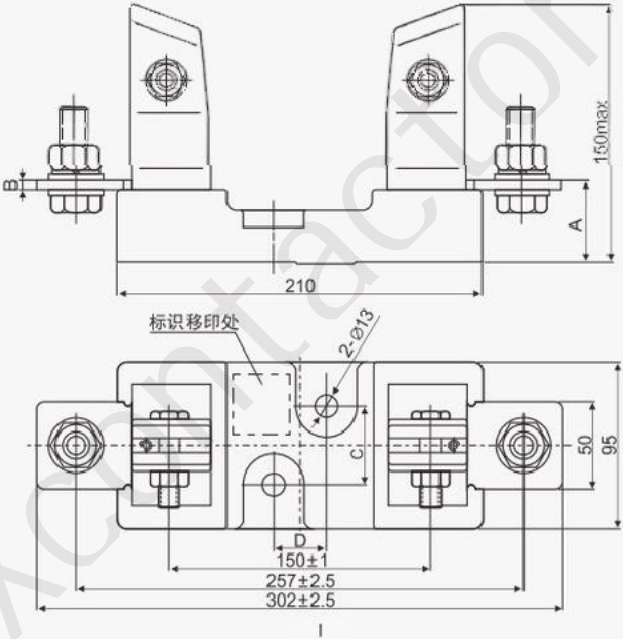
续表11

order number	art icl	配装熔断体 尺码	Rated absolute practice (A)	The appearance of the people ten Figure No. A1A2A3B1B2H' H2	重量
1105	NT3	3	690	11.2521025030604010510	65



续表11

产品型号	配装熔断体 尺码	额定绝缘 电压 (V)	约定发热 电流 (A)	外形尺寸 (mm) 图号	A	B	C	D	重量 (g)
NT4	4	690	1000	详见图11.6	47	5	45±0.5	30±0.5	3400
1106		690	1250		53	11	45±0.7	30±0.7	



graph 11.6



续表11

Seri	product	model	额定熔断体 Size	额定电压 (V)	约定发热 电流 (A)	外形尺寸 (mm) 图号	重量 (g)
1107	NH00	000 00	690	160	详见图11.7	170	

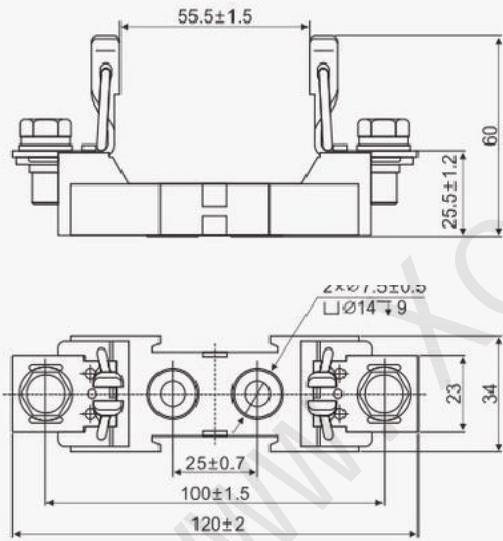


图 11.7



续表11

Seri	产	额定熔断体 size	额定电压 (V)	约定发热 电流 (A)	外形尺寸 (mm) 图号	重量 (g)
1108		000 00	690	160	详见图11.8	516

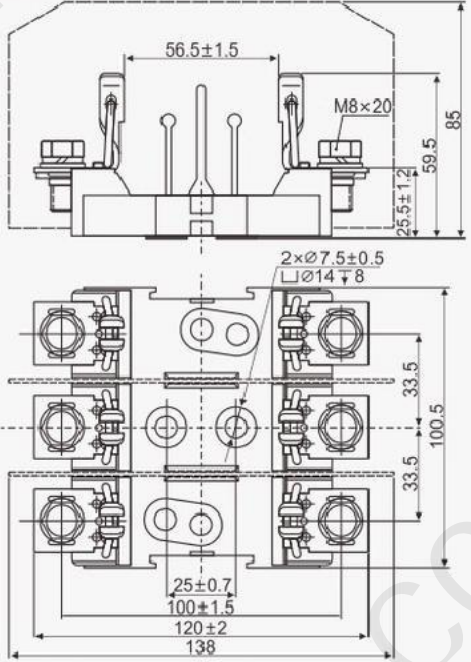


图 11.8



续表11

产品型号	额定熔断体 size	额定电压 (V)	约定发热 电流 (A)	外形尺寸 (mm) 图号	重量 (g)
NH0	0	690	160	详见图11.9	294

1109

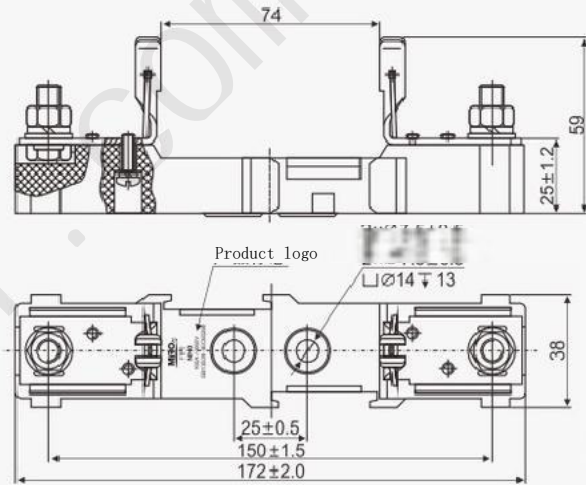


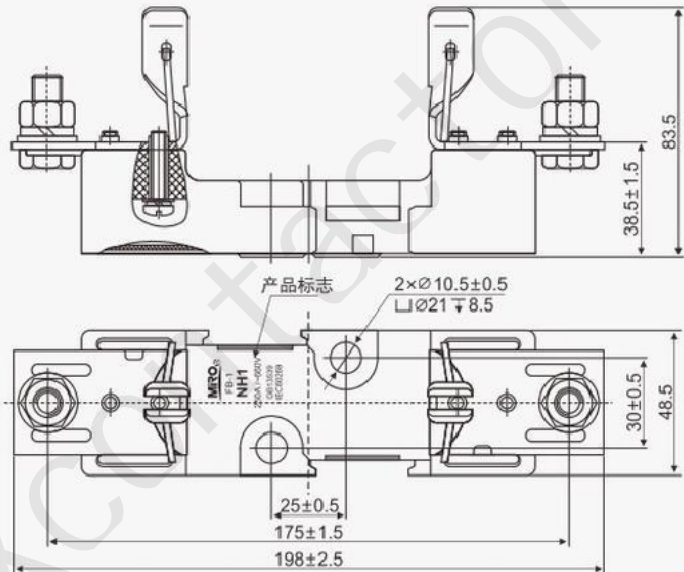
图 11.9



续表11

产品型号	额定熔断体 尺寸	额定电压 (V)	约定发热 电流 (A)	外形尺寸 (mm) 图号	重量 (g)
NH1	1	690	250	详见图11.10	502

1110



graph 1.10



续表11

size	Rated insulation voltage (V)	外形尺寸 (mm) 图号	重量 (g)
1111 NH2 2	690 400	详见图11.11	526

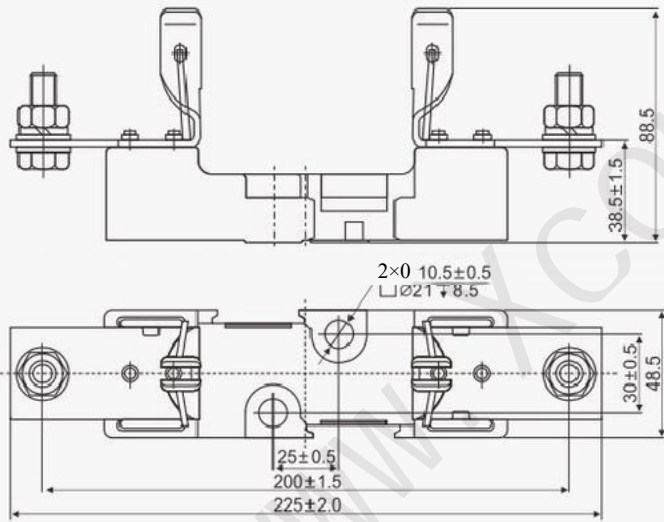
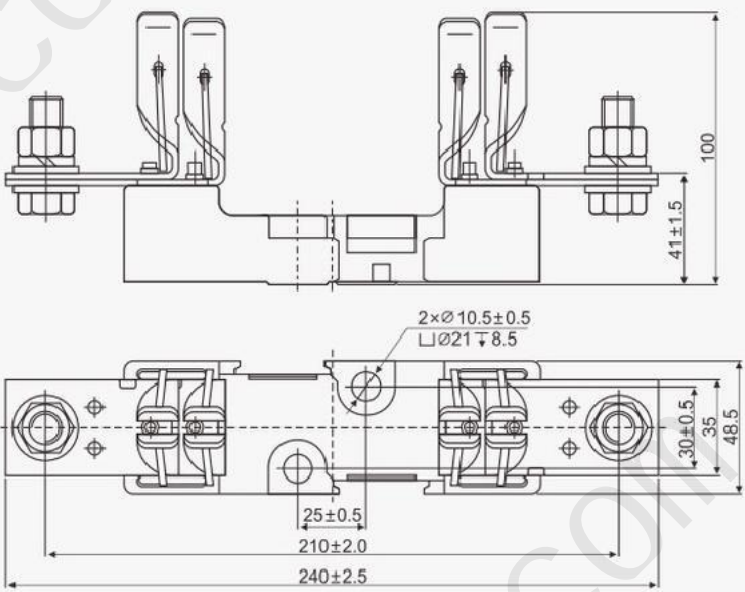


图 11.11



续表11

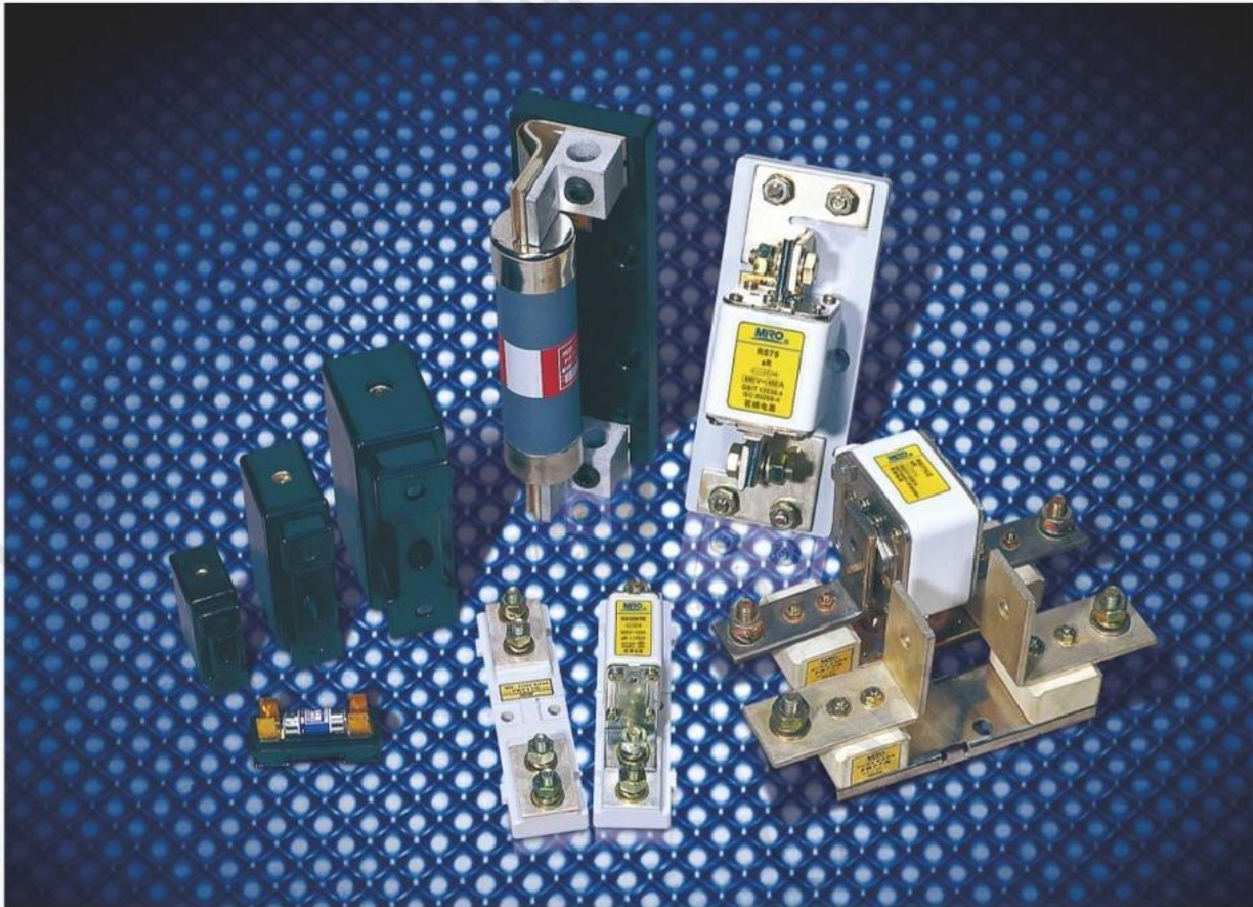
产品型号	配装熔断体 尺码	额定绝缘 电压 (V)	约定发热 电流 (A)	外形尺寸 (mm) 图号	重量 (g)
1112 NH3 3		690 630		详见图11.12	762



graph 11.12



Special fuse base



use

This fuse base is suitable for AC 50 Hz, rated insulation voltage to 1000V, agreed heating current to 630A, mainly used in electrical lines as a bolted type fuse body support parts. The product has the ability to withstand agreed heating current and expected short circuit shock current to 100 kA.

design feature

There are two structures of this kind of fuse base: one consists of the melt and support / base (Figure 12.1), the bolted fuse is first fixed on the melt, and then inserted into the static contact of the support / base to form a complete fuse; the other does not carry the molten, the bolted fuse is directly fastened on the static contact of the base with bolts. According to the needs of users, the company also makes other types of non-standard fuse base.

base data

See 12.1~12.6 and Table 12 for product model, rated insulation voltage, agreed heating current and external dimensions;

表12								
order number	产品型号	配装熔断体	额定绝缘电压 (V)	约定发热电流 (A)	外形尺寸 (mm)			重量 (g)
		mould			图号	A1	B1	
1204	FB77	RS77 RS77B S77C RS84	660	630	12.1	221	40	985
1205FB77A		RS77A RS82 RS79A RS83	660	630	12.1	214	30	905

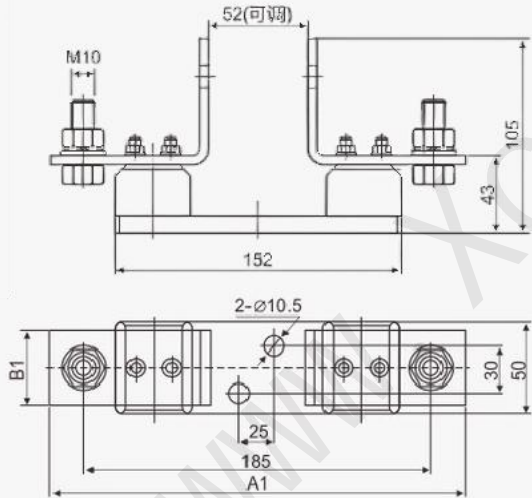
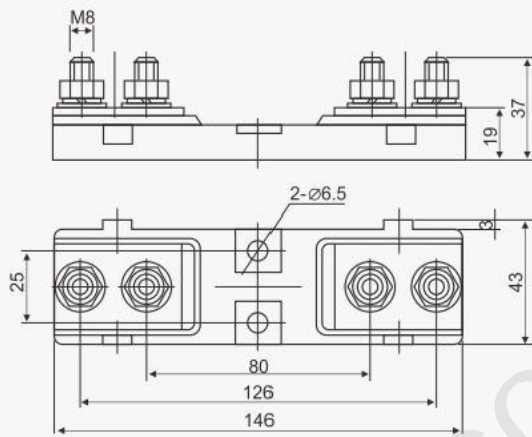


图 12.1



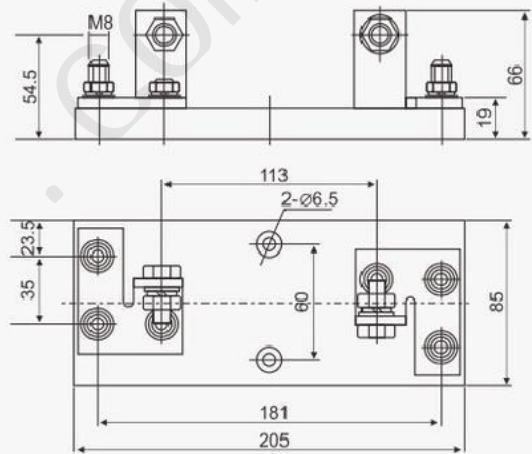
续表12					
word size	产品型号	配装熔断体	额定绝缘电压 (V)	约定发热电流 (A)	外形尺寸 (mm)
		model			图号
206FB711030A		RG RGS30B RS711B RS711C NG0	800	200	详见图12.2
					重量 (g)
					182



graph 12.2



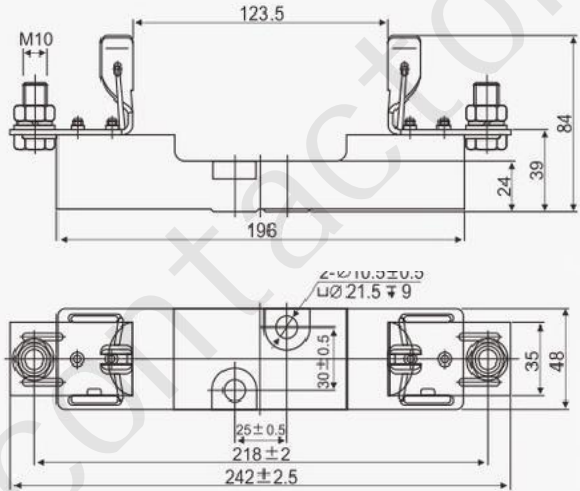
续表12								
order number	Product type	配装熔断体	额定绝缘电压 (V)	约定发热电流 (A)	外形尺寸 (mm)			重量 (g)
		mould			图号	A1	B1	
207	FB73B	NGT1-3 RS73B1000 RS75A RS75E	630	630	See Figure 12.3 for the sheep			826



graph 12.3



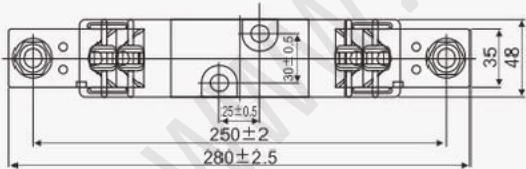
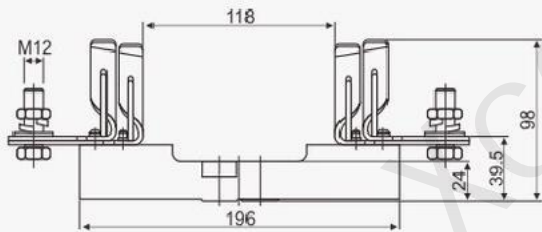
续 Table 12					
产品型号	配装熔断体	额定绝缘电压 (V)	约定发热电流 (A)	外形尺寸 (mm)	重量 (g)
				图号	
1210	RO32A	1140	250	详见图12.4	496



graph 12.4



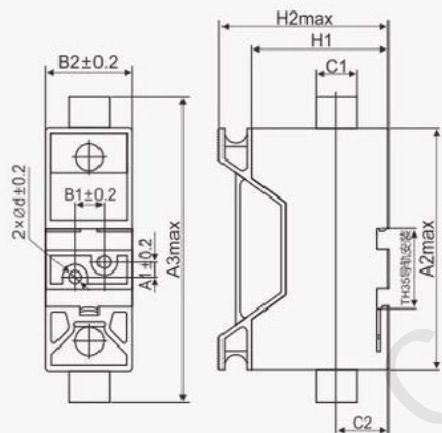
续: 12						
order number	product model	配器熔断体 Model number	Rated intermit 40110	It is better to hold current t	外形尺寸 (mm) 图号 详 graph 12	重量 (g) 856
1211	FB34A	R034A		30		



graph 12.5

No. Product model is equipped with fuse body rated insulation
Model voltage (V)
1213BFF63A3RG2R69
GOS2
1214 BFF125A4 RG690

Current diagram no. A1 A2 A3 B1B2C1C2H1H2 Od
Coned heating external size and weight
3
125

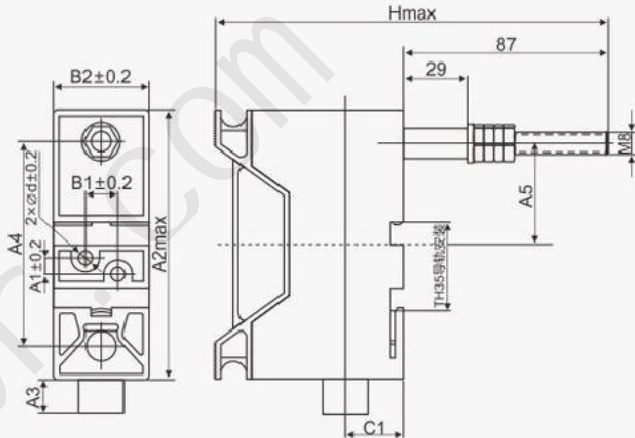


graph 12.6

Front wiring structure, two installation methods: TH 35 guide rail installation; screw fixation type.



续: 12									
No. Product Model Issue Outline dimensions (mm) Model voltage chart number									
1213	BFF63A3RG2RGS2	690	12	12.86.510613.5804012.538231635.5298					
1214	BFF125A4RG7	690	12	12.82513515944722.550281856.5691					

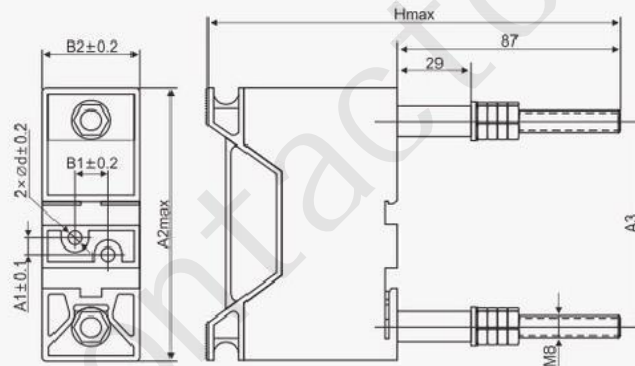


graph 12.8

Front and rear wiring structure, two installation methods: TH 35 guide rail installation; screw fixation type.



续: 12									
Agree serial Current A3 B1B2 H Od Model-type (g)									
63	12	106	80	12.53822.550	1635.5	752			
125	12	135	80	12.53822.550	1856				



graph 12.7

Rear wiring structure, screw fixed installation mode.



low voltage fuse

Low Voltage Fuse

Professional High Voltage And Low Voltage Fuse Manufacturer

aler

tor

熔断报警器



use

This series of fuse alarm is suitable for fuse signal / alarm in AC 50Hz, rated voltage to 1000 V.

design feature

This series of fuse alarms consists of the following three parts:

1. Fuse the impact body
- 2, micro switch (the contact is one often open and one often closed)
3. Support the base for fuse-impact body and micro-switch

The fuse alarm is generally connected in parallel under the fixed screw of the cover plate at both ends of the fuse body, when fused

When the broken body is fused, the fused impact body moves immediately, bouncing out the bump needle and pushing it to open slightly

Off, send signal or automatic switch circuit. Fixed between the two upper and lower (contact) ends of the base

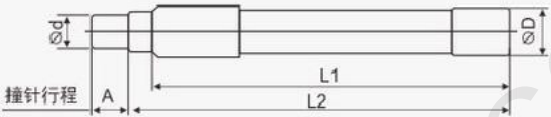
(Fixed) for

base data

Product model, rated voltage and external dimensions are shown in Figure 13.1~13.2 and Table 13;

表13

Number 产品型号	产品名称*	额定绝缘 电压 (V)	外形尺寸 (mm)						重量 (g)
			图 号	L1	L2	D	d	A	
30 Bamboo RX1/RX2-1000	熔断撞击体	1000	13.1	85	92	11	7.5	7.5	17
1302RZS1-100	TIS RT12-63 熔断撞击体	1000	13.1	58	64	11	5	12	15.5



Figur



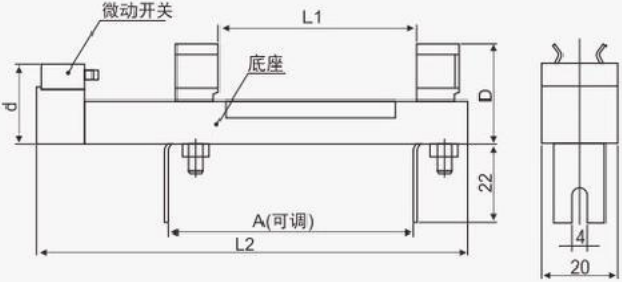
Low voltage fuse
Low Voltage Fuse

Load melt



续表13

word size产品型号	产品名称	额定绝缘电压 (V)	外形尺寸 (mm)					重量 (g)	
			图号	L1	L2	D	d	A	
1304**RX1/ RX2-1000	熔断撞击体底座 TIS RT12-63	1000	13.2	54.5	114	27	22.5	41~88	42
30 RZS1-1000	熔断撞击体底座	1000	13.2	36.5	90	28	26	30~72	33



graph 13.2



Note: * The fuse impact body and the fuse impact body base have the same models but different names;
* * RX 1 / RX 2-1000 is awarded by the two first manufacturers, and it has the same dimensions and technical data.

Melting melt (handle)



use

This melt is suitable for mounting / unloading of 000~4 sizes. The rated insulation voltage is 50Hz, 1000V. It has the advantages of reliable insulation, safe and convenient use, small feel and operation force.

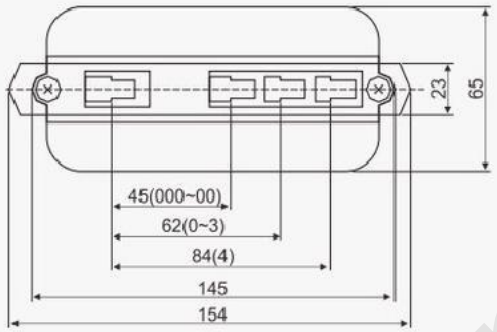
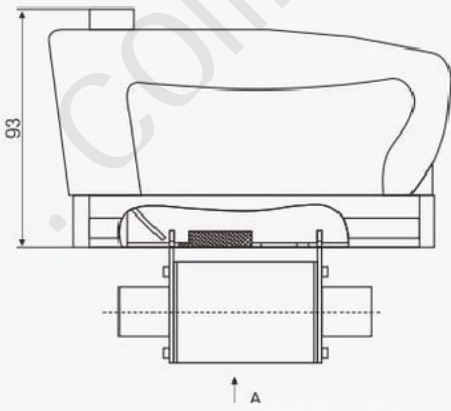
design feature

inch, respectively, 000~00, 0~3, 4 three types of

base data

See Figure 14.1 and Table 14 for product model, rated insulation voltage and external dimensions;

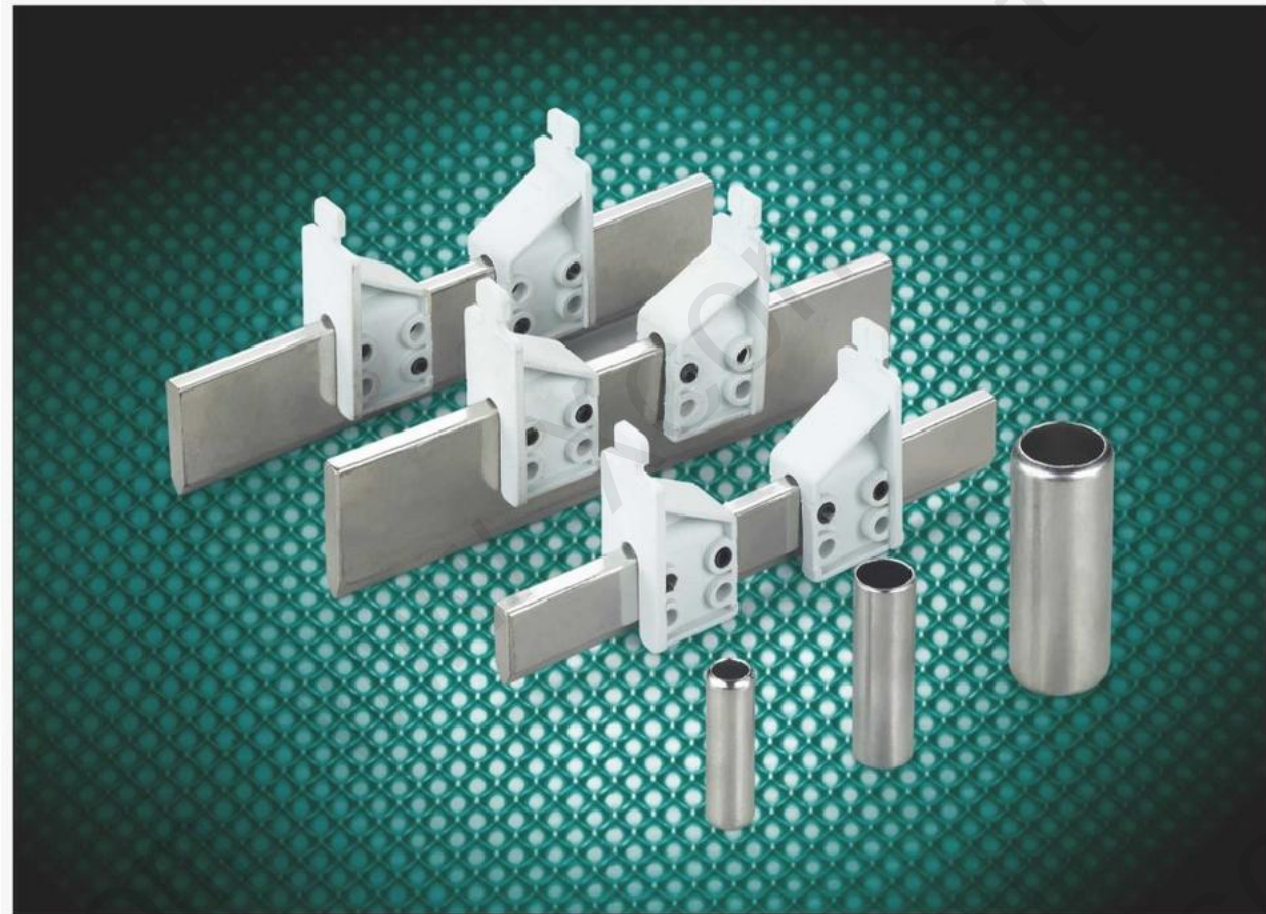
序号	产品 型号	载和熔断体 尺码	Lead the final 电压 (V)	外形尺寸 (mm) 图号	重量 (g)
1401	NT	000~4	1000	详见图 14.1	174



A向视图

graph 14.1





use

This series of zero line (N) pole fuse, equipped with cylinder cap support / base, and fuse type isolation switch, combined with the fuse, can serve as isolation power supply.

Rated insulation voltage AC 50 Hz, 690V rated working current line to 630 A is used as the N pole.

It can be installed in the support parts of 8.531.5, 10.338, 2258; and fuse base of 00, 0, 1, 2, 3 and used as neutral point (N phase).

base data

See Figure 14.2-14.7 and Table 14 for product model, rated insulation voltage and external dimensions;

design feature

This series of zero-line N-pole fuses can be equipped with RT10 series fuse branch T1 piece 8-3 bottom 23P seat + N and equal D junction R column, group. Can be freely combined

into R structure also can be used as customer needs to be used as

Professional Manufacturer
for High & Low Voltage Fuse
and Fuse Combined Electrical
Appliance Micro-Moss fuse

No. Product model rated insulation voltage fixed by flow shape ruler (V) (A) drawing number					
1402	R ⁰ 4N				
	R0				
1404	R016N R017N	000/69		尺寸(mm) ø D×L	重量

1404	5N	500/690	25	14.2	8.5×31.5	(g)
						3.3
						4.73
						9.5
						21.3



graph

order number	product model	Listen hold to the seat	额定绝缘电压	约定发热电流	外形尺寸(mm)	重量
1406	N-0	00				

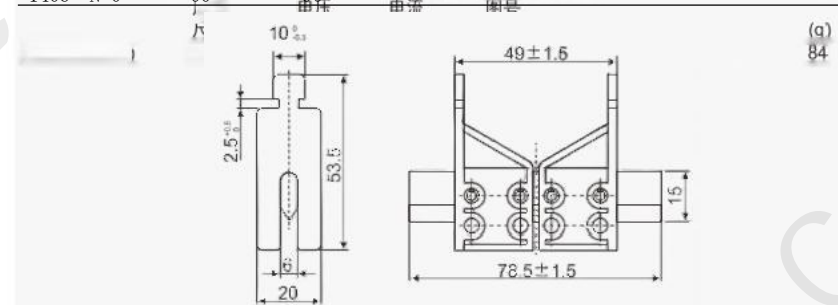


图 14.3

order number	product model	category	熔断器	额定绝缘电压	约定发热电流	外形尺寸(mm)	重量
1407	N-0	00					
			底座	电压 (V)	电流 (A)	图号	(g)
			尺碼		160	详见图 14.4	88

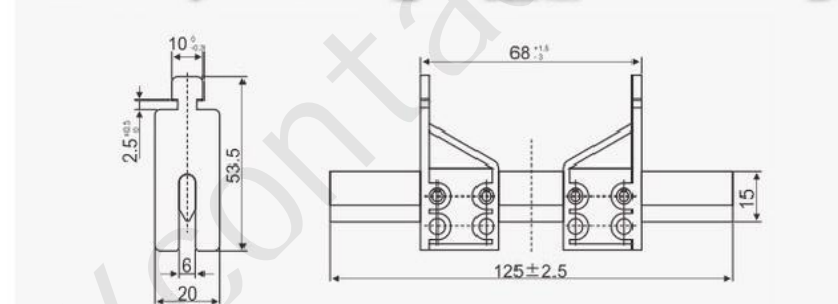


图 14.4



零线极
熔断器



续表14						
word size	产品型号	所属熔断 底座 尺码	额定绝缘 电压 (V)	约定发热 电流 (A)	外形尺寸(mm) 图号	重量 (g)
40	N-1	1	690	250	详见图 14.5	148

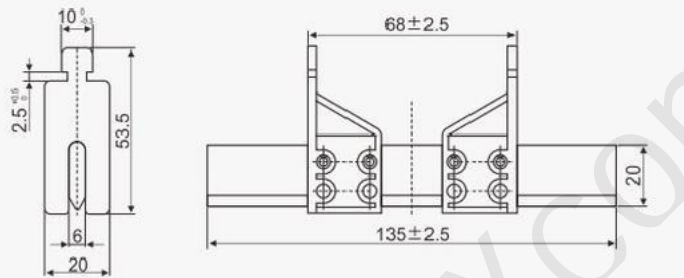


图 14.5



续表14						
序号	产品型号	所属熔断 底座 尺码	额定绝缘 电压 (V)	约定发热 电流 (A)	外形尺寸(mm) 图号	重量 (g)
1409	N-2	2	690	400	详见图 14.6	241

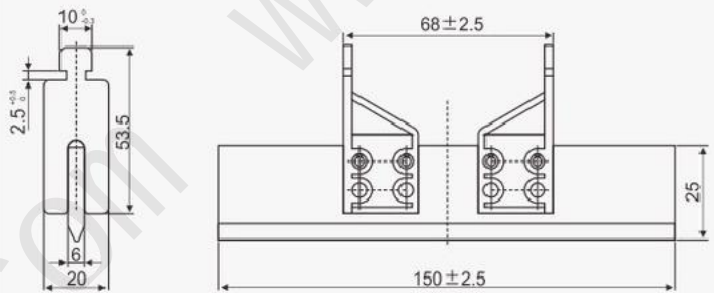


图 14.6



续表14						
序号	产品型号	所属熔断 底座 尺码	额定绝缘 电压 (V)	约定发热 电流 (A)	外形尺寸(mm) 图号	重量 (g)
1410	N-0	3	690	630	详见图 14.7	288

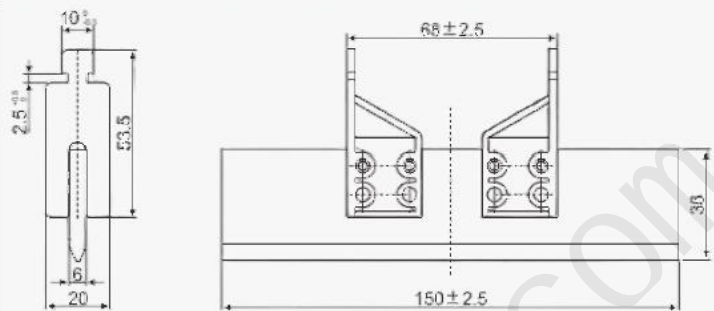


图 14.7



Car fuse Automobile Fuse

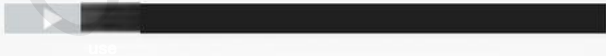
Professional High Voltage And Low Voltage Fuse Manufacturer



Car fuse



汽车熔断器



Fuses for rated voltage DC to 80 V or AC (50 Hz) to 130V, rated current to 800A, mainly as overload and short circuit protection of electrical

design feature

This series of automobile fuse consists of two parts-fuse body and fuse seat. The fuse body is divided into common type (CNL) and fast type (CNN) according to different use requirements. Two of them are bolted type. The fuse body can be

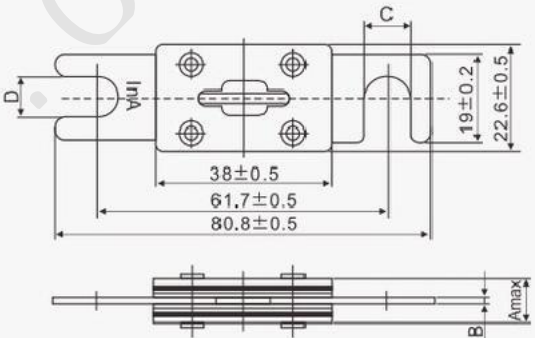
base data

See 16.1~16.4 and Table 16 for the drawings of fuse body number, rated voltage, rated current and external dimensions;

Professional Manufacturer for High & Low Voltage Fuse
Applied Combined Electrical

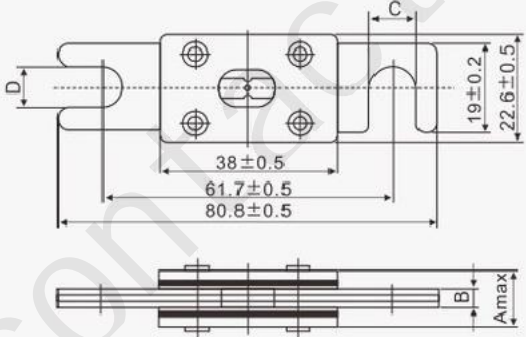
表16

No.	Product Model	Product Name	Rated current (A)	Rated voltage (V)	外形尺寸 (mm)				重量 ±1(g)
					图号	A	B	C	
	CNL	熔断体	35, 40, 50, 60, 80, 100, 125, 130, 150, 175, 200, 225, 250	80V AC/DC	16.1	10.6	0.3~1.1	8.7	16
1602			130, 150, 175, 200, 225, 250					11	23
1603			130, 150, 175, 200, 225, 250		16.1	11.6	1.0~2.0	8.7	21
1604			10					11	32
1605			350, 400, 500, 600, 800		16.1	12.7	2.6~4.0	8.7	35
160								11	11
1607									50



续表16

品名称		额定电压	额定	外形尺寸 (mm)				重量	
order number	product model	(V)	(A)	the first of the ten Heavenly	图号	A	B	C	D
r	体	130V AC/80V DC	10	Stems	16.2	10.9	1.3	8.7	8.7
	CNN melting diagram		30, 40, 50, 60, 80, 90, 100, 125, 150, 175, 180, 200, 225, 250, 275, 300, 325, 350, 375, 400, 500, 600, 700, 750, 800		16.2	10.9	1.3	8.7	8.7
1611								11	11
1612								11	11
1613					16.2	15.2	5.2	8.7	8.7
1614								11	11
1615					16.2	16.5	6.5	8.7	8.7

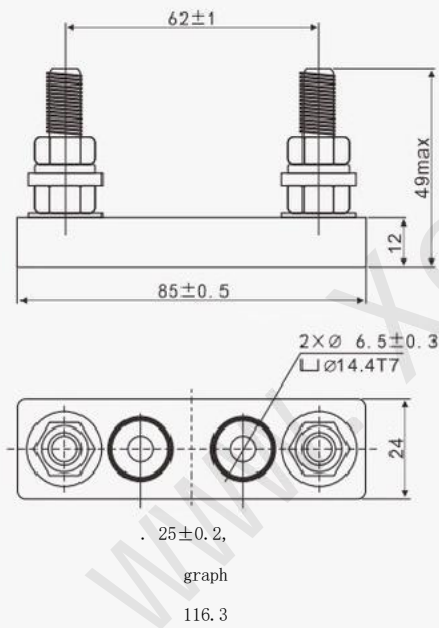


graph 16.2

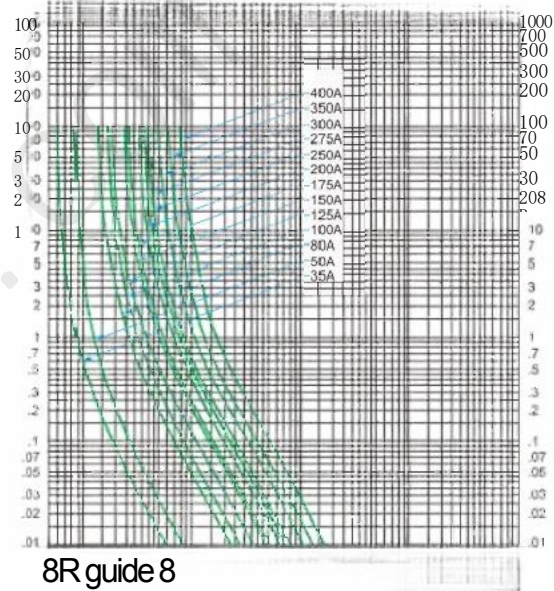


汽车熔断器

表16					
No.	Product Model	Product Name	额定电压	额定电流	外形尺寸 (mm)
			(V)	(A)	图号
1616	RQD-2	熔断器座	130V AC/80V DC	800	详见图16.3
					±1(g)

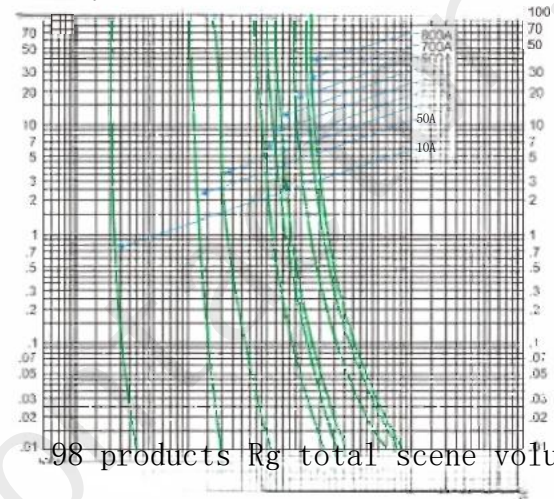


特性曲线



The CNL temporal current characteristic curve

Only 8 8 8 R



The CNN temporal current characteristic curve