



DC Receptacle & 48V Fuse Assembly Installation Instruction

We are striving to build an reliable brand of golf carts parts and accessories.

Hope this manual can assist you to easier install.

For more technical support, please reach us via

Website : www.10LOL.com

Email : sale_service@10LOL.com

Facebook : zhong zaiyang

Youtube : 10LOL



Scan To Get
Installation Video

Contents

DC Receptacle & 48V Fuse Assembly..1

(See figure 1)

Qty

Installation Tools

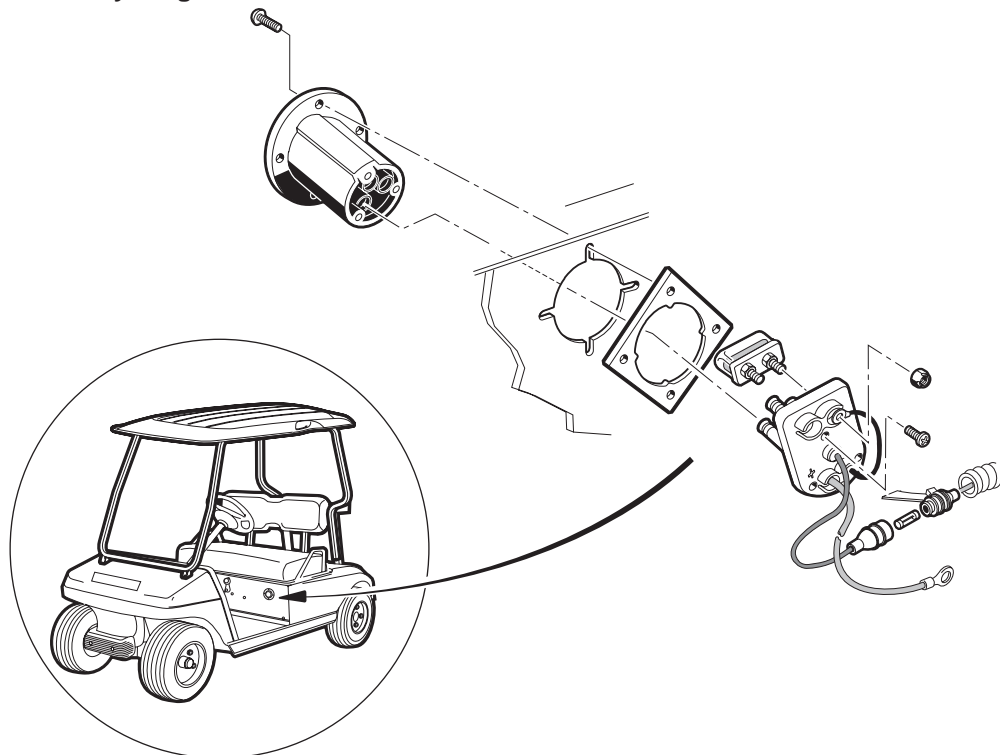
Qty

Cross screwdriver.....1

3/8-inch (10mm) socket.....1

9/16-inch (14mm) spanner.....1

Assembly Diagram



Installation Tools



Installation Steps

1. Park the vehicle on level ground.
2. Turn the key to “OFF” position and remove it from the switch.
3. Make sure the parking brake is set.
4. Remove the screws of the battery positive cables with the 9/16-inch (14mm) spanner, then remove the wires.

(See figure 2)
5. Remove the front and back screws of the charger receptacle with the cross screwdriver.



6. Disconnect the wire of the charger receptacle with the 3/8-inch (10mm) socket.

(See figure 4)



7. Remove the fuse.

(See figure 5)



8. Install the new charger receptacle;

(See figure 6)



9. Connect the wire of the charger receptacle, and tighten the screws with a 3/8-inch (10mm) socket.

(See figure 7)



10. Install the fuse.

(See figure 8)



11. Tighten the front and back screws of the charger receptacle with a cross screwdriver.

(See figure 9)



12. Install the battery positive cables.

(See figure 10)



This all completes your installation.