

Club Car DS Brake Shoes Installation Instruction

We are striving to build an reliable brand of golf carts parts and accessories.

Hope this manual can assist you to easier install.

For more technical support, please reach us via

Website : www.10101.com

Email : sale_service@10101.com

Facebook : zhong zaiyang

Youtube : 10L0L



Scan To Get
Installation Video

Contents

Club Car DS Brake Shoe.....4

(See figure 1)

Qty

Installation Tools

Qty

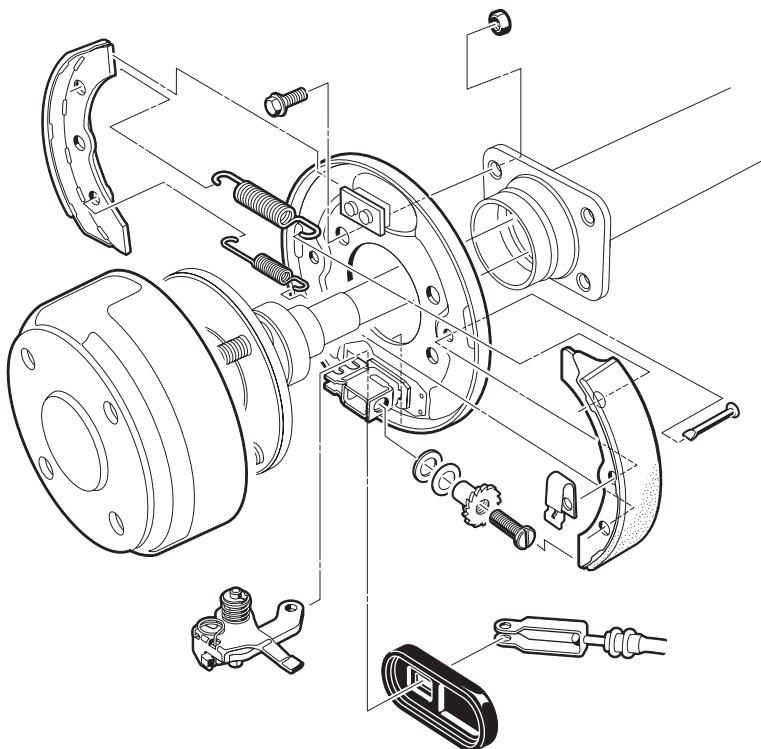
3/4-inch (19mm) Socket.....1

Jack.....1

Slotted Screwdriver.....1

Hammer.....1

Assembly Diagram



5. Raise the frame of the rear suspension with the jack to hang the rear wheel in the air.

(See figure 3)



6. Remove the front wheel; then put the wheel under the chassis (in case the jack accidentally leans or slips down)

(See figure 4)



7. Unlock the park brake pad.

(See figure 5)



8. Remove the brake drum.
(Note: If the brake drum is too tight, knock it loose with a hammer.)

(See figure 6)



9. Remove the shoe retainer with the long flat nose pliers.

(See figure 7)



10. Remove the brake shoe with the slotted screwdriver.

(See figure 8)



11. Install a new brake shoe and the brake spring;(Note: Both the brake shoe and the brake spring must be installed in the correct position as shown in the picture.)

(See figure 9)



12. Install the shoe retainer with the long flat nose pliers.

(See figure 10)



13. Install the brake drum.

(See figure 11)



14. Install the rear wheel.

(See figure 12)



This all completes your installation.