



Club Car DS Forward/Reverse Switch Installation Instruction

We are striving to build an reliable brand of golf carts parts and accessories.

Hope this manual can assist you to easier install.

For more technical support, please reach us via

Website : www.1010l.com

Email : sale_service@1010l.com

Facebook : zhong zaiyang

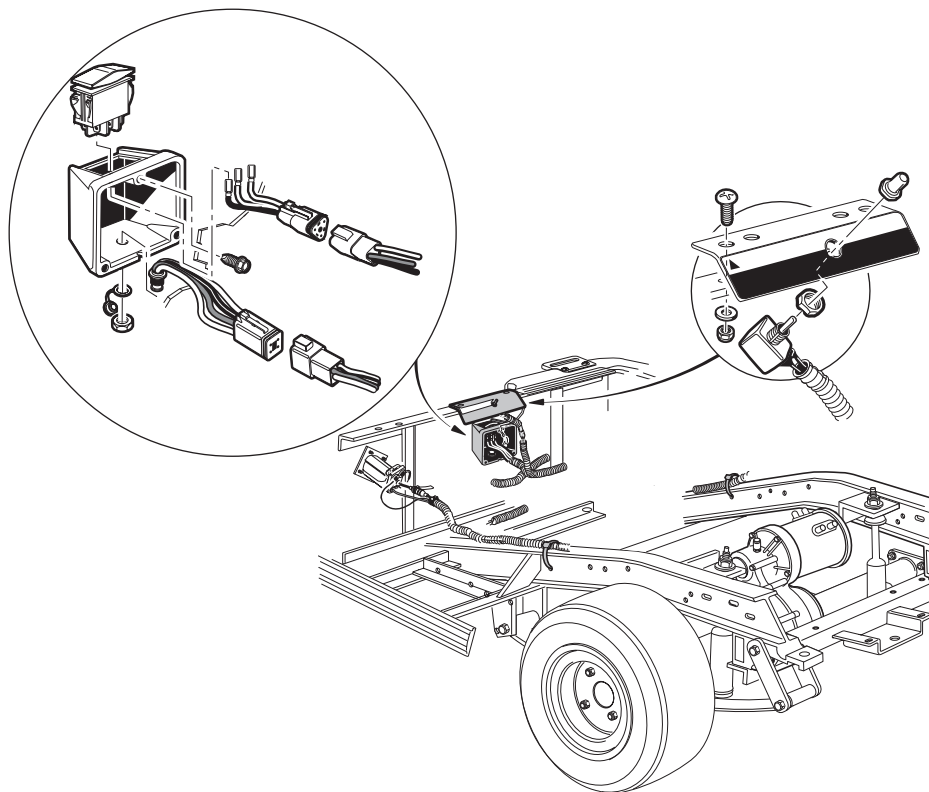
Youtube : 10L0L



Scan To Get
Installation Video

Contents	Qty	Installation Tools	Qty
Forward/Reverse Switch.....	1	Slotted screwdriver.....	1
(See figure 1)			

Assembly Diagram



Installation Steps

1. Park the vehicle on level ground.
2. Turn the key to “OFF” position and remove it from the switch.
3. Make sure the parking brake is set.
4. Place Tow/Run switch in the Tow position.

(See figure 2)
5. Remove the Forward/Reverse switch with a Slotted screwdriver.

(See figure 3)

Installation Tools



Slotted Screwdriver

1



2



3



6. Disconnect the wires.

(See figure 4)



7. Install the new Forward/Reverse switch.

(See figure 5)



8. Connect the Forward/Reverse switch wires(The blue is on the left. The orange is in the middle. The brown is on the right.)

(See figure 6)



This all completes your installation.