



Club Car DS Steering Joint Installation Instruction

We are striving to build an reliable brand of golf carts parts and accessories.

Hope this manual can assist you to easier install.

For more technical support, please reach us via

Website : www.10101.com

Email : sale_service@10101.com

Facebook : zhong zaiyang

Youtube : 10L0L

Contents

Club Car DS Steering Joint1
(See figure 1)

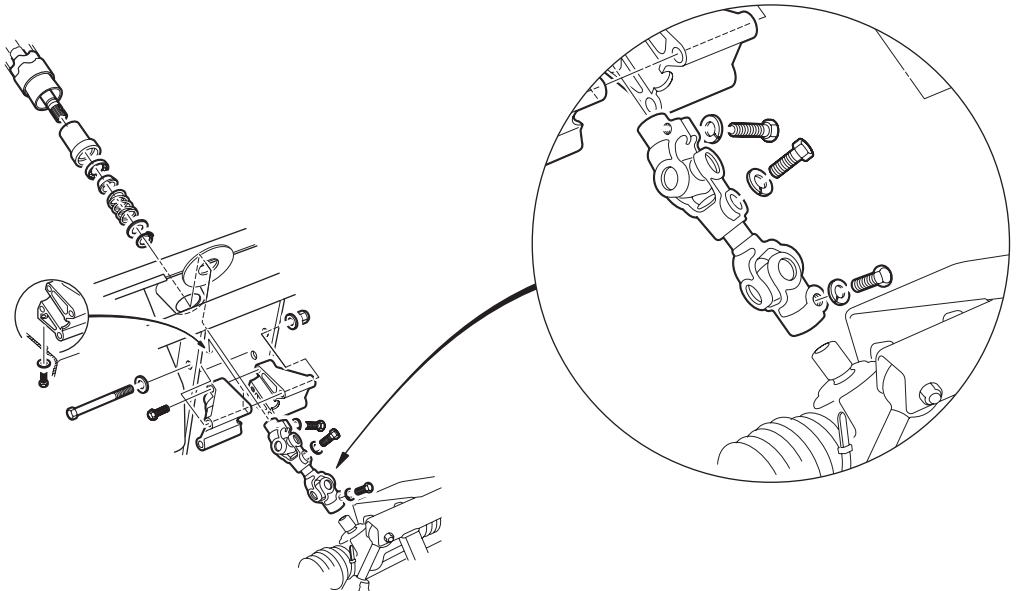
Qty

Installation Tools

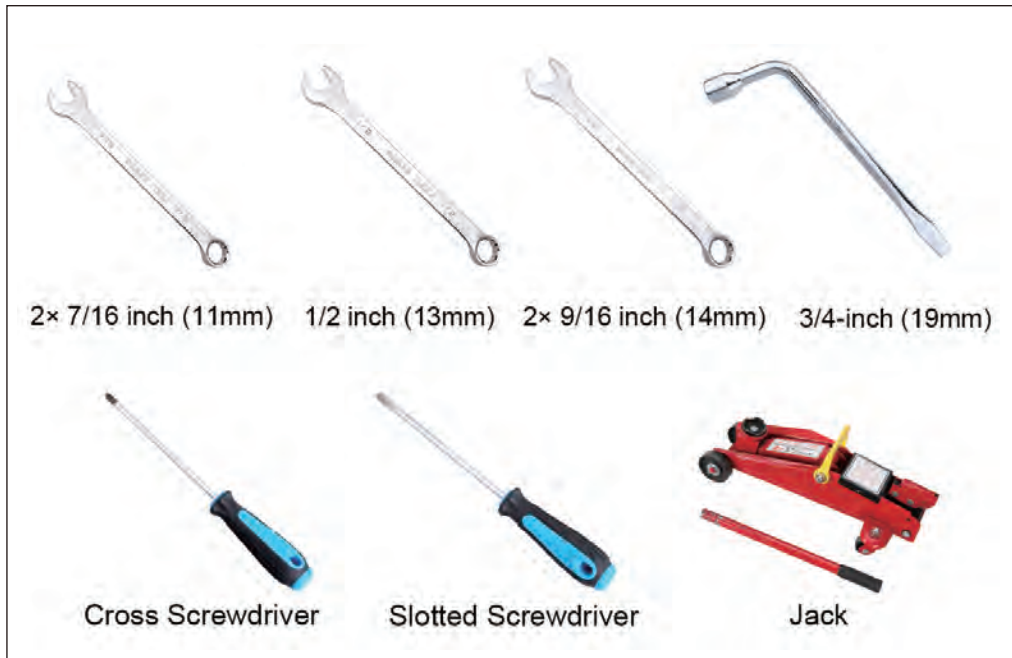
Qty

7/16-inch (11mm) Spanner.....2
1/2-inch (13mm) Spanner.....1
9/16-inch (14mm) Spanner.....2
3/4-inch (19mm) Socket.....1
Slotted Screwdriver.....1
Jack.....1
Cross Screwdriver.....1

Assembly diagram



Installation Tools



Installation Steps

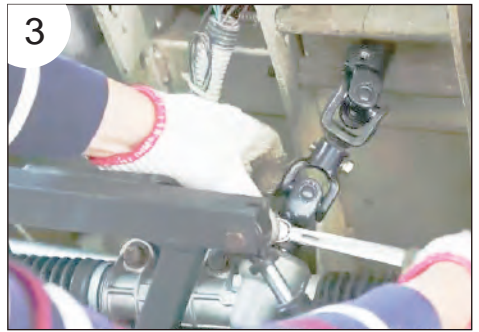
1. Park the vehicle on level ground.
2. Turn the key to “OFF” position and remove it from the switch.
3. Make sure the parking brake is set.
4. Remove the push type blind rivet of the front body with the slotted screwdriver, and remove the front body.

(See figure 2)



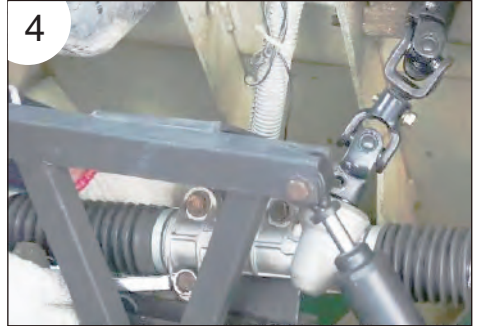
5. Remove the screws of the steering joint with the 1/2-inch (13mm) spanner.

(See figure 3)



6. Remove 3 screws of the steering gear box assembly with the 9/16-inch (14mm) spanner.

(See figure 4)



7. Remove the steering joint.

(See figure 5)



8. Install a new steering joint.

(See figure 6)



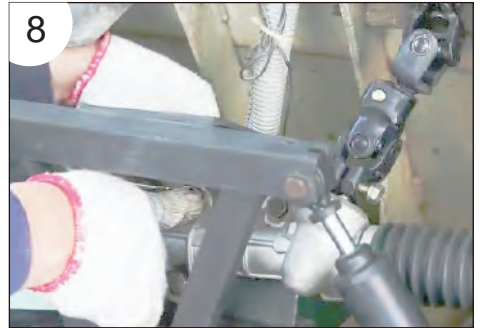
9. Install the screws on both ends of the steering joint.

(See figure 7)



10. Install 3 screws of the steering gear box assembly, and tighten them with the 9/16-inch (14mm) spanner.

(See figure 8)



11. Tighten the screws on both ends of the steering joint with the 1/2-inch (13mm) spanner.

(See figure 9)



12. Install the front body and the push type blind rivet of the front body.

(See figure 10)



This all completes your installation.



Club Car DS Steering Joint Installation Instruction

We are striving to build an reliable brand of golf carts parts and accessories.

Hope this manual can assist you to easier install.

For more technical support, please reach us via

Website : www.10101.com

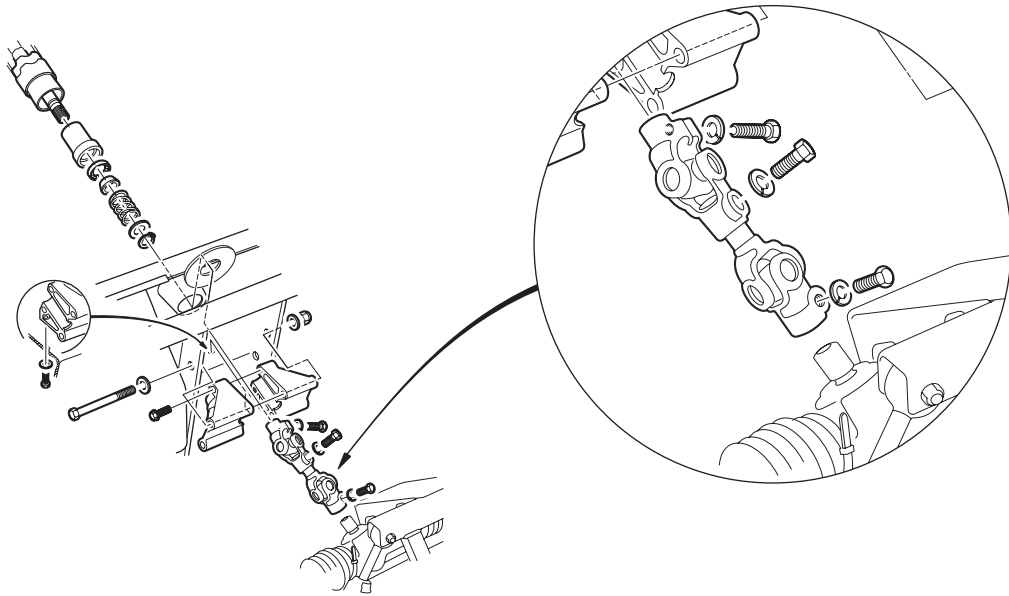
Email : sale_service@10101.com

Facebook : zhong zaiyang

Youtube : 10L0L

Contents	Qty	Installation Tools	Qty
Club Car DS Steering Joint1 (See figure 1)		7/16-inch (11mm) Spanner.....2	
		1/2-inch (13mm) Spanner.....1	
		9/16-inch (14mm) Spanner.....2	
		3/4-inch (19mm) Socket.....1	
		Slotted Screwdriver.....1	
		Jack.....1	
		Cross Screwdriver.....1	

Assembly diagram



Installation Tools



Installation Steps

1. Park the vehicle on level ground.
2. Turn the key to "OFF" position and remove it from the switch.
3. Make sure the parking brake is set.
4. Remove the push type blind rivet of the front body with the slotted screwdriver, and remove the front body.

(See figure 2)



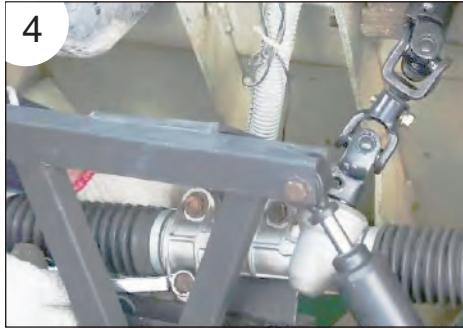
5. Remove the screws of the steering joint with the 1/2-inch (13mm) spanner.

(See figure 3)



6. Remove 3 screws of the steering gear box assembly with the 9/16-inch (14mm) spanner.

(See figure 4)



7. Remove the steering joint.

(See figure 5)



8. Install a new steering joint.

(See figure 6)



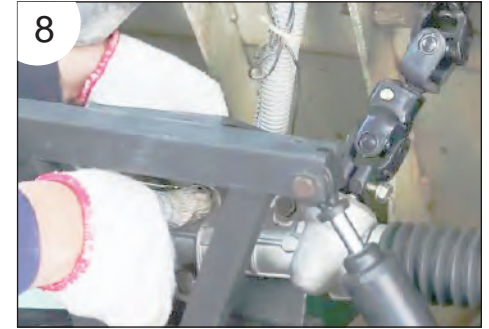
9. Install the screws on both ends of the steering joint.

(See figure 7)



10. Install 3 screws of the steering gear box assembly, and tighten them with the 9/16-inch (14mm) spanner.

(See figure 8)



11. Tighten the screws on both ends of the steering joint with the 1/2-inch (13mm) spanner.

(See figure 9)



12. Install the front body and the push type blind rivet of the front body.

(See figure 10)



This all completes your installation.