

Club Car DS Left Thread Tie Rod End Installation Instruction

We are striving to build an reliable brand of golf carts parts and accessories.

Hope this manual can assist you to easier install.

For more technical support, please reach us via

Website : **www.1010l.com**

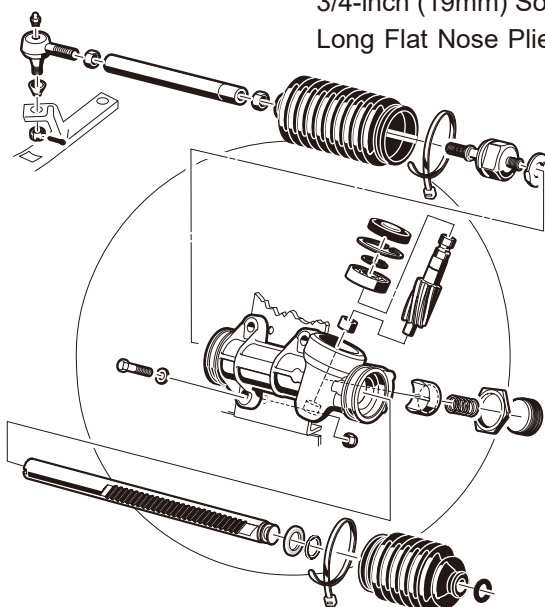
Email : sale_service@1010l.com

Facebook : zhong zaiyang

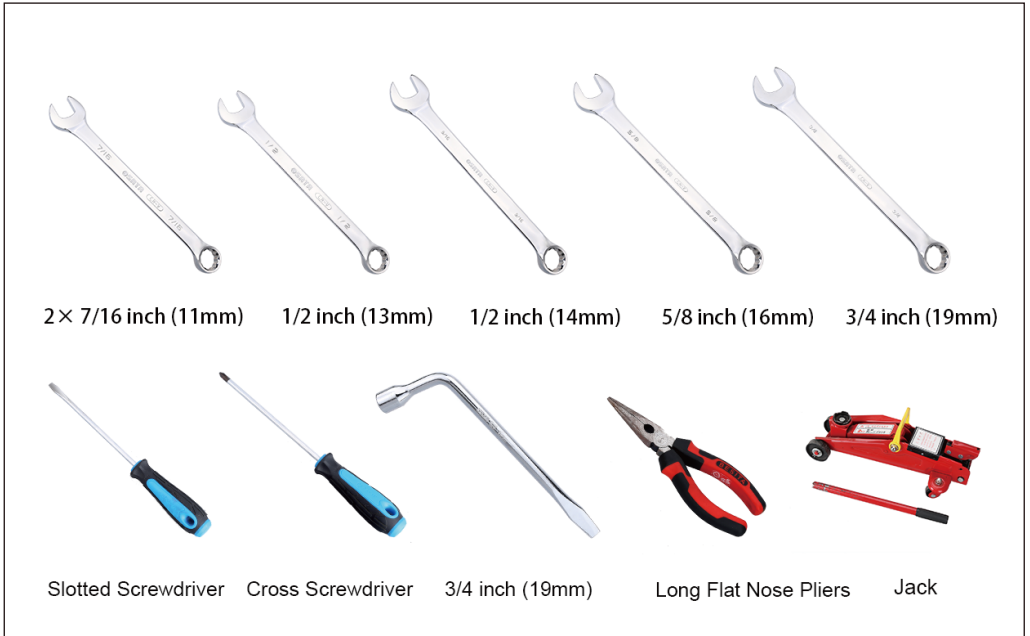
Youtube : 10L0L

Contents	Qty	Installation Tools	Qty
Club Car DS Left Thread Tie Rod End....	1	7/16-inch (11mm) Spanner	2
Cotter Pin.....	1	1/2-inch (13mm) Spanner.....	1
(See figure 1)		9/16-inch (14mm) Spanner.....	1
		5/8-inch (16mm) Spanner.....	1
		3/4-inch (19mm) Spanner.....	1
		Slotted Screwdriver.....	1
		Cross Screwdriver.....	1
		Jack.....	1
		3/4-inch (19mm) Socket.....	1
		Long Flat Nose Pliers.....	1

Assembly Diagram



Installation Tools



Installation Steps

1. Park the vehicle on level ground.
2. Turn the key to “OFF” position and remove it from the switch.
3. Make sure the parking brake is set.
4. Remove the screws of the 2 front wheels with the 3/4-inch (19mm) socket.

(See figure 2)



5. Raise the spring pad of the front leaf spring with the jack to hang the 2 front wheels in the air.

(See figure 3)



6. Remove the 2 front wheels; then put the wheels under the chassis (in case the jack accidentally leans or slips down)

(See figure 4)



7. Loosen the screws on Thread Tie Rod End with the 3/4-inch (19mm) spanner.

(See figure 5)



8. Remove the cotter pin of the Thread Tie Rod End with long flat nose pliers respectively.

(See figure 6)



9. Remove the nut of the Thread Tie Rod End with 9/16-inch (14mm) spanner respectively.

(See figure 7)



10. Remove the Thread Tie Rod End.

(See figure 8)



11. Install a new Thread Tie Rod End.

(See figure 9)



12. Install the nut of the Thread Tie Rod End with 9/16-inch (14mm) spanner respectively.

(See figure 10)



13. Install the cotter pin of the Thread Tie Rod End with long flat nose pliers respectively.
(See figure 11)



14. Adjust the tie rod to adjust the toe-in of the front wheels. (Remarks: Make a mark on the central point of the two tires' front surface respectively, and measure the distance between the 2 central point marks; then roll these 2 central point marks to the central point position of the two tires' back surface respectively, and measure the distance between the 2 central point marks on the back surface. The distance between the 2 central points on the back surface must be 0.6-0.9mm farther than the distance between the 2 central points on the front surface.)
(See figure 12)



15. Fasten the tie rod with the 5/8-inch (16mm) spanner, and tighten the screws on both ends of the tie rod with the 3/4-inch (19mm) spanner.



(See figure 13)

16. Install the 2 front wheels.



(See figure 14)

This all completes your installation.