

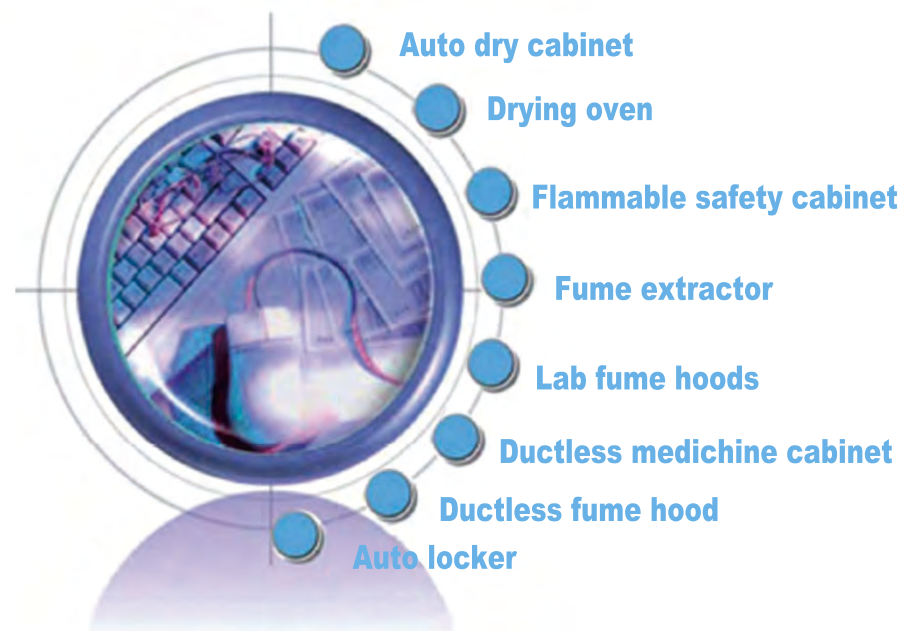
CATEC SECURITY EQUIPMENT

Keeping your items secure from

- humidity damage
- fire and explosion
- harmful pollution
- theft and dust
- oxidation
- chemical erosion



QUALITY ASSURANCE
SAFETY STORAGE



We are manufacturer for security equipment like safety cabinets, fume hoods, dry cabinets, n2 gas cabinets, drying ovens, auto lockers and other electronic appliances that can keep your items secure from fire and explosion, harmful pollution, humidity damage, oxidation, theft and dust. With modern manufacture machines, advanced technology and strict quality control in production and constant technical innovating, our products are welcomed all over the world for industries of electronics, military projects, chemical engineering, research institute, lighting, optics, pharmacy, etc.

CATEC SECURITY EQUIP, HOLDING YOUR SAFETY STORAGE CONCERNS



Functions:

- ① Air intake to create new circulating
- ② Overall filtering system
- ③ Clean the air in laboratory
- ④ Cleaning ambient air

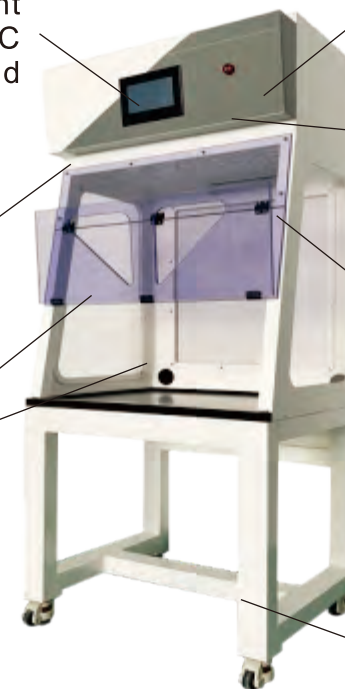


7 inch touch screen to monitor the ambient humidity/temp, VOC concentration, and alarming system

Material: strong anti-erosion 8mm PP plate structure

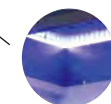


Front/side Acrylic Window $\geq 6\text{mm}$

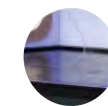


Strong activated carbon plus HEPA filtration conformed to ASTM standard

Imported PSC draught Fan



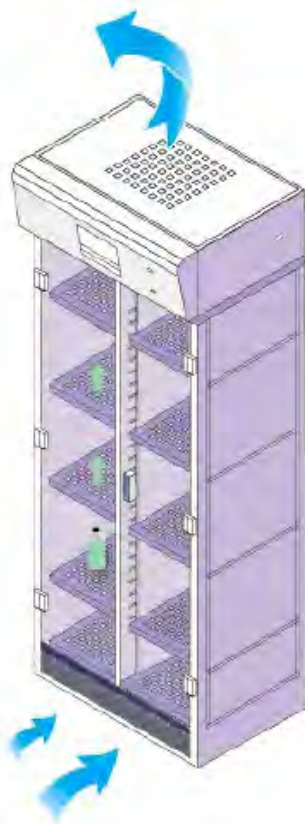
25W LED Light



Epoxy Resin Worktop

Technical details

Spec	Outer Size (W*D*H/mm)	Inner Size (W*D*H/mm)	Filtering Rate	Power	Ave. Power	Volume	Other Details	Parts Options
CFS-DS800	800*620*1290	764*540*860	230m ³ /h 0.4-0.6m/s	220V-240V 50/60Hz	42W 3A	40dBA	Filter*8, fan*1, LED light*1, 7 inch LCD display, epoxy resin worktop, power wire, alarming system	Fixed/movable base, ceramics/SS/tempered glass worktop Filter model: SFGL OG: organic gas SFGL AG: acid gas HEPA H14: dust&particles
CFS-DS1000	1000*620*1315	971*512*885	230m ³ /h 0.4-0.6m/s	220V-240V 50/60Hz	42W 3A	40dBA	Filter*12, fan*2, LED light*1, 7 inch LCD display, epoxy resin worktop, power wire, alarming system	
CFS-DM1275	1275*620*1340	1172*522*866	230m ³ /h 0.4-0.6m/s	220V-240V 50/60Hz	42W 3A	40dBA	Filter*12, fan*3, LED light*1, 7 inch LCD display, epoxy resin worktop, power wire, alarming system	
CFS-DM1600	1600*620*1340	1172*522*866	460m ³ /h 0.4-0.6m/s	220V-240V 50/60Hz	42W 3A	40dBA	Filter*12, fan*3, LED light*1, 7 inch LCD display, epoxy resin worktop, power wire, alarming system	
CFS-DL1600	1600*790*1495	1497*692*1014	690m ³ /h 0.4-0.6m/s	220V-240V 50/60Hz	42W 3A	40dBA	Filter*12, fan*3, LED light*1, 7 inch LCD display, epoxy resin worktop, power wire, alarming system	



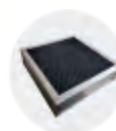
Imported PSC draught Fan



25W LED Light

Front acrylic door $\geq 6\text{mm}$

Material: galvanized steel with epoxy resin electrostatic sprayed



Strong activated carbon plus HEPA filtration conformed to ASTM standard



7 inch touch screen to monitor the ambient humidity/temp, VOC concentration, and alarming system



pp trays

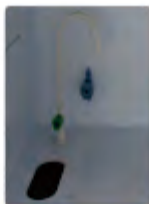
Technical details

Spec	Outer Size (W*D*H/mm)	Inner Size (W*D*H/mm)	Filtering Rate	Power	Volume	Other Details	Parts Option
CFS-G800	800*620*2360	708*450*1750	220m ³ /h	220V/50Hz 76W 3A	160bottles (500ml)	Filter*8, fan*1, shelf*8, LED light*1, 7 inch LCD display, alarming system	Shelves, movable base, filter saturation alarming system, PP tray, filter
CFS-G1600	1600*510*2395	971*512*885	220m ³ /h	220V/50Hz 110W 3A	320bottles (500ml)	Filter*8, fan*1, shelf*20, LED light*1, 7 inch LCD display, alarming system	
CFS-GS819	819*354*725	753*322*519	75m ³ /h	220V/50Hz 42W, 3A	48bottles (500ml)	Filter*1, fan*1, shelf*2, LED light*1, 7 inch LED display, alarming system	



Technical details

Spec	Outer Size (W*D*H/mm)	Inner Size (W*D*H/mm)	Filtering Rate	Power	Volume	Other Details	Parts Option
CFS-G800P	800*620*2360	708*450*1750	220m ³ /h	220V/50Hz 76W 3A	160bottles (500ml)	Filter*8, fan*1, shelf*8, LED light*1, 7 inch LCD display, alarming system	Shelves, movable base, filter saturation alarming system, PP tray, filter



Features:

- 1.Fume Hood, also called fume cupboard or fume cabinet: main structure is made of high quality PP board, perfect for resisting corrosion and heat. It is applicable to various kinds of laboratories with high requirement for cleanliness, for example: pharmaceutical laboratory, food laboratory, semiconductor laboratory, trace metal laboratory, biology laboratory, etc. It is widely used in the industries such as chemical, medical, car, steel plant, university and science institute
- 2.Panoramic view sash: vertical movable 5mm tempered glass, low turbulence, easy positioning
- 3.Worktop: PP board, optional for epoxy resin, or ceramics for specific needs.
- 4.Lighting: 30W/40W fluorescent lamp and switch
- 5.Power: AC220V,50-60HZ, or as demanded
- 6.Exhaust system: subuliform gas collecting hood

Model spec.	CF1200	CF1500	CF1800
Outer dimension (L*W*H)	1200*850*2350mm	1500*850*2350mm	1800*850*2350mm
Max door open	820mm (vertically adjustable)		
exhaust flux at air speed 0.5m/s	23.4CMM/840CFM	30.6CMM/1100CFM	50.8CMM/1825CFM
Working board material	White PP,thickness 8MM, bending designed to avoid spilling over.options for solid physiochemical board or epoxy resin or ceramic.		
operation w indow	Transparent tempered glass, thickness 5MM		
Gas collecting hood	Conical necking type		

Standard parts

Lighting device	All cover fluorescent 30Wx1	All cover fluorescent 30Wx1	All cover fluorescent 40Wx1
Power socket	AC220V/10A X 4pcs		
Power switch board	For light, operation panel and general on/off control		
Remote control water valves	For pure water and pipe water		
PP sink	1pcs		

Options for other parts

Cups,sinks,air cocks, water cocks, air blow ers, power sockets,explosion-proof lighting,Venturi valve control, Butterfly valve control, converter control,touch pad, Surface wind speed detection, sound and light alarm, etc.

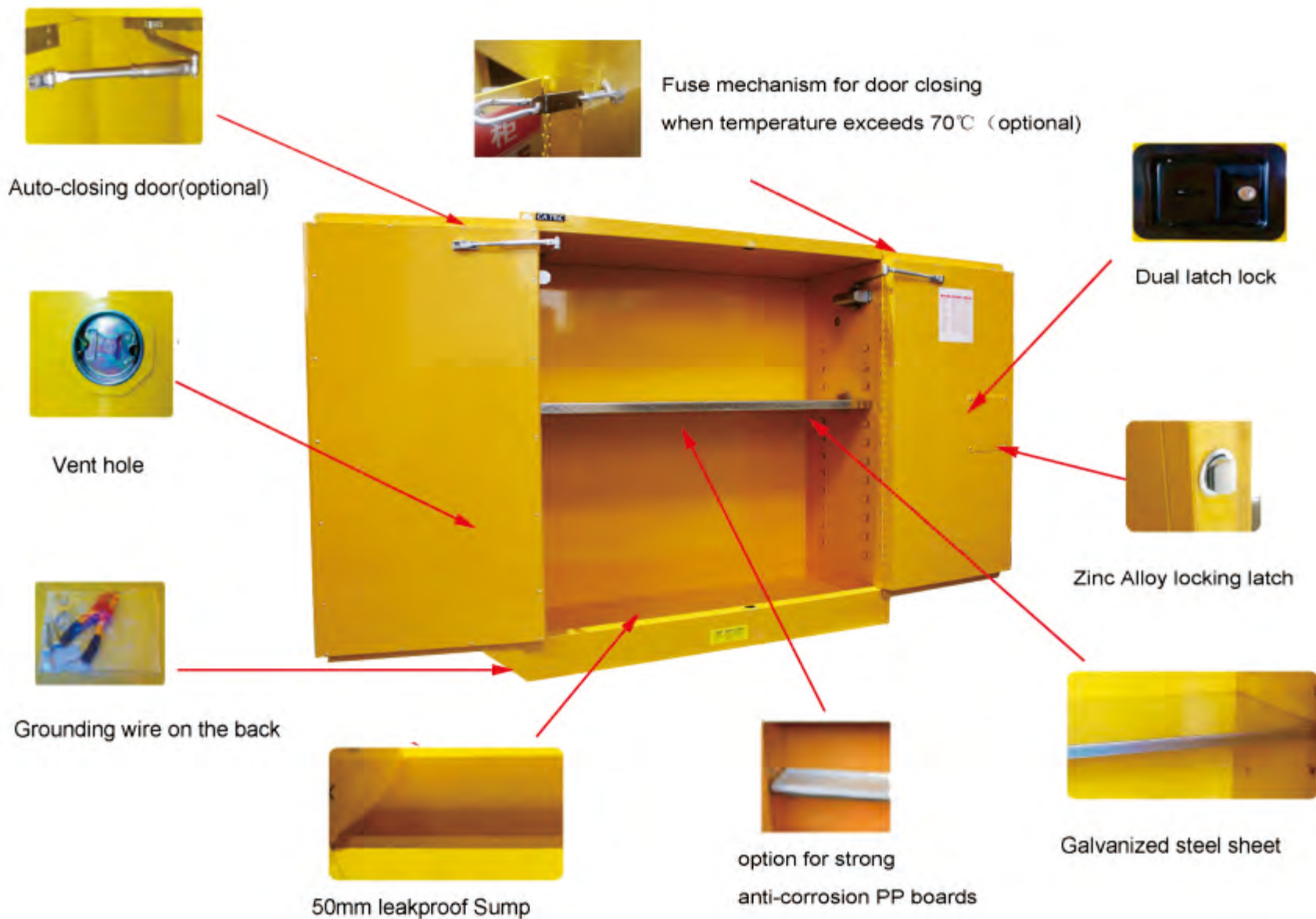


- Designed as per American standards of OSHA and NFPA standards, for safety storage of flammable, combustible, and hazardous materials
- Double-wall steel structure with 1.5"(38mm) insulation for fire resistance.
- Welded 1.2mm thickness steel offers optimum longevity with increased heat resistance
- Three-point locking system with two keys for security, available for optional Master Lock to limit access unless for authorized personnel.
- 2"(50mm) leakproof sump for spills containment.

- Normative safety signage in large red lettering.
- Two vents with integral flame arrestors
- Adjustable spill-catching shelves, adjusting by 2 1/4"(6mm) up/down
- Cabinets are epoxy painted for both inner and outer.
- Grounding connector for antistatic earthing, as per OSHA standard.



OPTIONAL SPECIAL DESIGNS



Technical details of flammable safety cabinet

Galvanized steel sheet

pp board

Model name	Material	Length	With	Thickness	Applicable spec	Remarks
Shelf	Galvanized steel sheet	348	330	25	CFS-G004	For STD spec
Shelf	Galvanized steel sheet	508	360	25	CFS-G012	
Shelf	Galvanized steel sheet	1008	360	25	CFS-G030 CFS-G045	
Shelf	Galvanized steel sheet	778	760	25	CFS-G060	
Shelf	Galvanized steel sheet	1008	760	25	CFS-G090	
Pallet	Galvanized steel sheet /pp board	340	330	10/58	CFS-G004	For options
Pallet	Galvanized steel sheet /pp board	500	360	10/58	CFS-G012	
Pallet	Galvanized steel sheet /pp board	1000	360	10/58	CFS-G030 CFS-G045	
Pallet	Galvanized steel sheet /pp board	770	760	10/58	CFS-G060	
Pallet	Galvanized steel sheet /pp board	1000	760	10/58	CFS-G090	

Spec	Capacity (liters)	Outer dimension (H*W*D/CM)	Inner dimension (H*W*D/CM)	Weight (kg)	Parts
CFS-G004	15	56*43*43	46*35*33	34	One door/manual, 1 shelf, one earthing cable
CFS-G012	45	89*59*46	79*51*36	60	One door/manual, 1 shelf, one earthing cable
CFS-G022	83	165*60*46	155*52*36	90	One door/manual, 3 shelves, one earthing cable
CFS-G030	114	112*109*46	102*101*36	100	2 doors/manual, 1 shelf, one earthing cable
CFS-G045	170	165*109*46	155*101*36	138	2 doors/manual, 2 shelves, one earthing cable
CFS-G054	204	165*60*87	155*52*77	136	2 doors/manual, 3 shelves, one earthing cable
CFS-G060	207	165*86*86	155*78*76	165	2 doors/manual, 2 shelves, one earthing cable
CFS-G090	340	165*109*86	155*101*76	190	2 doors/manual, 2 shelves, one earthing cable

Yellow indicates flammable liquids

Red indicates combustible liquids

Blue indicates weak acids and bases

DRUM SAFETY STORAGE CABINET



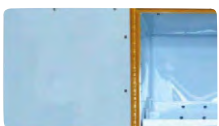
Drum safety cabinet is specially used for the storage of one or two international standard vertical drums. Unique double-wall design and explosion-proof function make sure the safety of environment. optional single or double drum rollers at the bottom for easy moving.

Technical details

Spec	Capacity (gallon)	Outer Size (W*D*H/mm)	Inner Size (W*D*H/mm)	Weight (kg)	Door Type	Parts
CFS-55OS	60	860*860*1650mm	780*760*1550mm	195	manual	2 doors/manual, 1 shelf, one earthing cable, one drum roller
CFS-55OSA					auto closing	
CFS-110OD	110	1500*860*1650mm	1420*760*885mm	355	manual	2 doors/manual, 1 shelf, one earthing cable, two drum roller
CFS-110ODA					auto closing	



Smart control system
E-view 7" touch screen



PP Liner



PP stair shelves with
10mm vent

Detachable top

Cabinet in 1.2mm cold rolled
steel, 2.0mm for bottom

Filtration system
99.99% efficiency for
particles over 0.3um



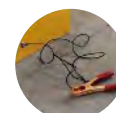
Warning label



Options for mechanical
or electrical lock



Vent hole



Grounding wire

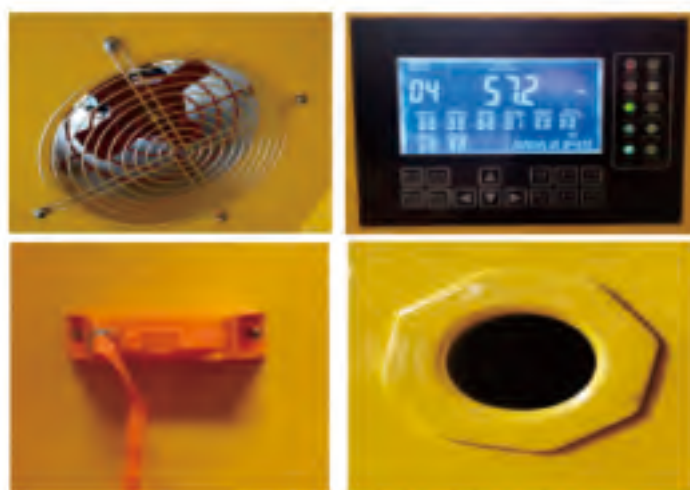
Hinges and sealants

Embedded fire resistant
ceramic material

304SS Door handles
and screws

Technical details

Spec	Outer Size (W*D*H/mm)	Power	Volume	Other Details	Parts Option
CFS-Z030	1090*460*1400mm	220V/50Hz 40W 2A	40dBA	2 door/manual, Filter*8, fan*1, galvanized steel board*1, 7" LCD display, power line, alarming system	Shelves, movable base, filter saturation alarming system, filter
CFS-Z045	1090*460*1930mm	220V/50Hz 40W 2A	40dBA		



Features:

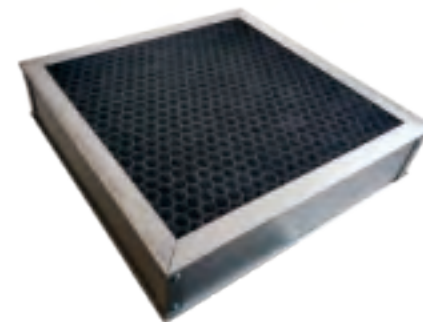
1. Welded 1.2mm thickness steel, designed to meet international standards of OSHA and NFPA (CODE 30). Double-walled steel structure for fire proof.
2. Explosion-proof cabinet with double explosion-proof glass and all the other accessories are explosion-proof.
3. Industrial special locking system for security.
4. There is a vent hole on the side of the cabinet to ensure the gas flow in the cabinet.
5. Quality fixed belts to keep the gas cylinder stand.
6. Special options:
 - Combustible gas detection alarm: when the gas alarm detects that the gas concentration reaches the critical point of the lower or upper explosion limit, it will send out an alarm signal.
 - Special gas detection alarm: select special gas detection alarm device according to the storage condition of gas cylinder, with high sensitivity and accuracy, more safe and reliable.
 - Automatic exhaust system: When the sensor in the cabinet detects the gas leakage and gives an alarm, the top fan will automatically work to discharge the gas out of the room through the exhaust pipe.
 - alarming system for temperature or humidity limitations.
 - smoke alarm: alarm when the inside smoke concentration exceed the setting value
 - auto-closing door.
 - Adjustable fold down ramp, for easy loading or unloading the gas cylinder bottle.

Technical details

Spec	Outer Size (W*D*H/mm)	Weight (kg)	Gas Cylinder	Door Type	Options
CFS-GC101	600*450*1900mm	63	single	single	alarm, fan
CFS- GC102	900*450*1900mm	90	double	double	



7 inch touch screen



integrated carbon filter

Features:

1. Epoxy ESD coated 1.2mm galvanized steel structure, enduring lead free paint, strong anti-erosion.
2. 7" LCD touch screen panel, smart control for real time VOC, temperature and humidity movement, with resettable alarming system.
3. High efficiency filtration system as per ASTM standard for acid and alkali gas (filtration rate 99% for VOC), also 99.995% filtration rate for particles over 0.3um.
4. Imported PSC fan of USA, stable functioning, ultra-low noise, and without ESD sparkle.

Spec	Outer Size (W*D*H/mm)	Fan Installed (pcs)	Filters (Layer)	Filtration Capacity (m3/h)	Power (W)	Noise	Gross Weight (kg)
CFS-MX600	600*460*460	1	4	240	160	≤60db	37.5

- Application: for drying, baking, temp testing, heat aging, or sterilizing in mining Industries, electronics, labs, research insitutes, and other industries.
- Safety structure morror, stainless steel made inner container, and high quality steel for outer cabinet.
- LED display and microcomputer control, LCD display optional.
- Door glass with wide view for user's observation convenience.
- Nano-material for door sealing and insulation on material for heat preservation.
- Variety of blast drying ovens, vacuum drying ovens, incubators, and constant temperature/humidity cabinets, for your options!



VERTICAL VACUUM DRYING OVEN(250 °C



VERTICAL BLAST DRYING OVEN(250 °C



ULTRA HIGH TEMP DRYING OVEN(400 °C



DESK TYPE VACUUM DRYING OVEN(250 °C



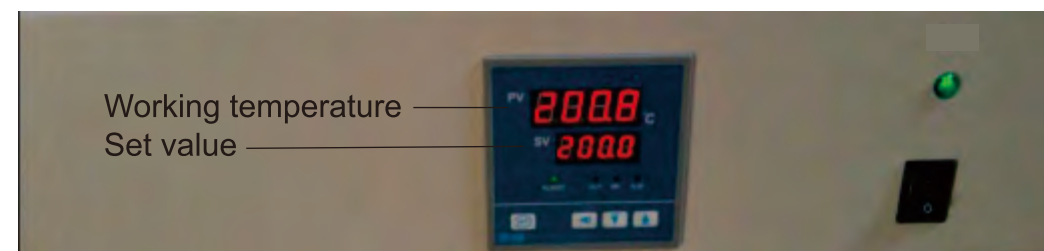
DESK TYPE BLAST DRYING OVEN(250 °C

Model name	Spec	Outer Size (W*D*H/mm)	Inner Size (W*D*H/mm)	Technical parameters	Shelf qty (pcs)
Desk-top blast drying oven	DCTG-9023A	580*480*440	300*300*270	RT+10~250°C, AC220V 50HZ, error 0.1°C/±0.5°C, 500~1050W	2
	DCTG-9053A	700*530*520	420*350*350		2
	DCTG-9123A	830*530*720	550*350*550		2
	DCTG-9203A	880*730*770	600*550*600		2
	DCTG-9025A	580*480*440	300*300*270	RT+10~300°C, AC220V 50HZ, error 0.1°C/±0.5°C, 500~2100W	2
	DCTG-9055A	700*530*520	420*350*350		2
	DCTG-9125A	830*530*720	550*350*550		2
	DCTG-9205A	880*730*770	600*550*600		2
Vertical blast drying oven	VCTG-9030A	480*500*630	340*320*320	RT+10~250°C, AC220V 50HZ, error 0.1°C/±0.5°C, 500~2100W timing 0~9999min	2
	VCTG-9070A	550*530*760	400*350*450		2
	VCTG-9140A	590*730*860	450*550*550		2
	VCTG-9240A	640*780*1060	500*600*750		2
	VCTG-9420A	740*730*1670	600*550*1300	RT+10~250°C, AC220V 50HZ, error 0.1°C/±0.5°C, 4000~6000W, timing 0~9999min	3
	VCTG-9620A	940*780*1690	800*600*1300		4
	VCTG-9920A	1140*780*1990	1000*600*1600		4
	VCTG-9425A	740*730*1670	600*550*1300	RT+10~300°C, AC220V 50HZ, error 0.1°C/±0.5°C, 4000~7500W, timing 0~9999min.	3
	VCTG-9625A	940*780*1690	800*600*1300		4
	VCTG-9925A	1140*780*1990	1000*600*1600		4
Vacuum drying oven	VCTF-6020	580*450*450	300*300*275	RT+5~250°C, AC220V 50HZ, error 0.1°C/±0.5°C 500~3500W, timing 0~999min, vac. Degree 133pa	1
	VCTF-6030	630*510*460	320*320*300		1
	VCTF-6050	720*525*535	415*370*345		2
	VCTF-6090	615*590*1470	450*450*450		2
	VCTF-6210	720*820*1750	560*640*600	RT+10~250°C, AC380V 50HZ, error 0.1°C/±0.5°C, 4100~5500W, timing 0~999min	3
	VCTF-6250	1050*760*910	700*600*600		3

Model name	Spec	Outer size (W*D*H/mm)	inner size (W*D*H/mm)	Technical parameters	Shelf qty (pcs)
High-temp blast drying oven	HCTG-9030A	560*520*700	320*320*300	100~400°C,	2
	HCTG-9050A	640*600*695	410*350*350	AC 220V 50HZ,	2
	HCTG-9100A	690*750*850	450*450*450	error 0.1°C/±0.5°C, 2000~3500W,	2
	HCTG-9200A	945*850*840	600*600*600	timing 0~9999min	2

Vacuum Pump Technical Data

Model	DM2	DM4	DM8	DM15
Displacement speed(L/S)	2	4	8	15
Ultimate partial pressure(Pa)	Without gas ballast	≤4X10 ⁻²	≤4X10 ⁻²	≤4X10 ⁻²
	With gas ballast	≤8X10 ⁻²	≤8X10 ⁻²	≤8X10 ⁻²
Ultimate total pressure(Pa)	Without gas ballast	≤5X10 ⁻¹	≤5X10 ⁻¹	≤5X10 ⁻¹
	With gas ballast	≤8X10 ⁻¹	≤8X10 ⁻¹	≤8X10 ⁻¹
Noise Lp/Lw dB(A)	52/63	54/65	58/71	59/72
Inlet port(DN)	25KF	25KF	40KF	40KF
Outlet port(DN)	25KF	25KF	40KF	40KF
Oil filling(L)	1.1	1.5	3	4
Rotational speed of pump(r/min)	1400	1430	1400	1420
Motor power (kw)	0.37	0.55	1.1	1.5(2.2)
Weight(kg)	24	31	60	70
Overall dimensions(mm)	510*174*274	550*174*274	650*236*383	700*236*383



Dry Cabinet for Humidity Control Storage

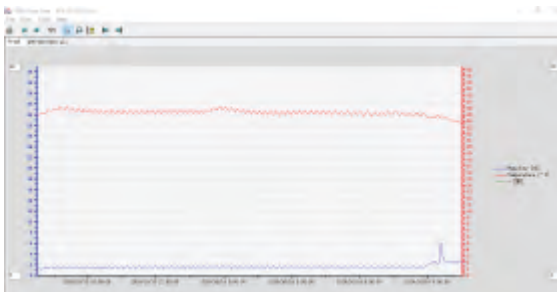
- LED display, Honeywell humidity sensor with error of $\pm 3\%$ RH.
- Quality 1mm and 1.2mm cold rolled plate, reinforced structure design, high intensity bearing, every shelf can bear over 100kg.
- 3.2mm toughened glass.
- Zinc alloy lock with air press.
- ROHS certified powder coating technology with Dupont powder, high anti-erosion performance to avoid your stored goods from pollution and static shock.
- AC power 85V-265V50/60Hz, compatible for worldwide application.
- Smart control system and resettable target humidity.
- Compliant with IPC/JEDEC J-STD-033B, and CE certified.
- Additional options to be added:
 - 1) data logging system by USB connection
 - 2) security code lock
 - 3) humidity/temp alarm system with buzzer or light tower
 - 4) heating system up to 40°C or 60°C
 - 5) nitrogen purging system
 - 6) independent segregated compartments
 - 7) stainless steel cabinet



Display Panel



U type: ultra low humidity control, less than 5%RH

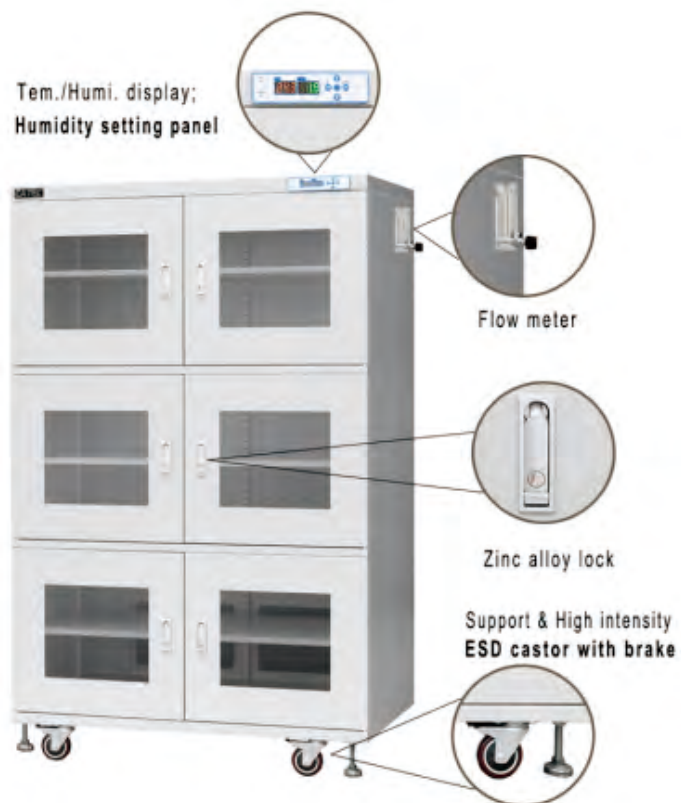


Technical details

Spec	Outer Size (W*D*H/mm)	Inner Size (W*D*H/mm)	Controlled Humidity (RH)	Average Power (W)	Maximum Power (W)	Anti-ESD Function
DRY98EW	448*400*688	446*372*598	1-50%	8	170	Yes
DRY160EW	448*450*1010	446*422*848		10	170	Yes
DRY240EW	598*400*1310	596*372*1148		10	170	Yes
DRY320EW	900*450*1010	898*422*848		10	170	Yes
DRY435EW	900*600*1010	898*572*848		10	170	Yes
DRY540EW	598*710*465	596*682*1298		10	260	Yes
DRY718EW	598*710*1910	596*682*1723		15	340	Yes
DRY870EW	900*600*1890	898*572*1698		15	340	Yes
DRY1436EW-4	1200*710*1910	1198*682*1723		25	680	Yes
DRY1436EW-6	1200*710*1910	1198*682*1723		25	680	Yes

Drying cabinet with smart nitrogen purging system:

- Options for air flow ranges: 5~25LPM, 5~60LPM, or 5~300LPM. The air purging will be cut off automatically when humidity reduced to set target, thus to save customer's N2 supply.



Drying cabinet in stainless steel



Drying cabinet with heating for 40°C or 60°C:

- To meet the demands for some special items that require low temperature baking, available for models of DRY320/ DRY435/ DRY870/ DRY1436.

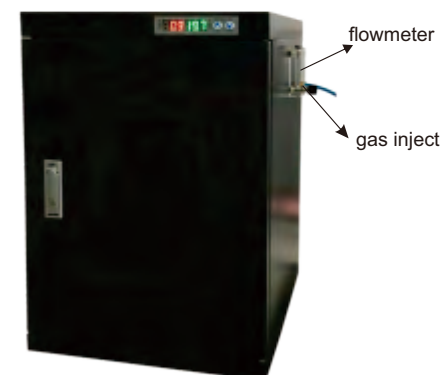


Oxygen Humidity



Drying cabinet with oxygen content detection:

- The main purpose of humidity control storage is to keep the MSD from oxidation. However, the low humidity does not necessarily mean a low oxygen content. So we add the oxygen content detection system is necessary for those components made of brass, bronze, silver, tungsten, gold, etc. that are most likely to go oxidized.



Drying cabinet with independent segregated compartments:

- Each compartment is an independent working space, when you open one of the compartments the others won't be affected. Available for models of DRY320/ DRY435/ DRY718/ DRY870/ DRY1436.



Drying cabinet with drawers

Drying cabinet with buzzer or light tower alarming



Drying cabinet with nitrogen generator attached:

- Besides humidity controlled by the patented drying module of DM3, there's a N2 generator attached to produce endless nitrogen to purge into the cabinet to satisfy your demand of anti-oxidation. Available for models of DRY870/ DRY1436.



Application:

- High grade 1mm and 1.2mm cold rolled palte, reinforced structure, high intensity bearing and anti-erosion.
- Convenient for stuff storage and taking-out.
- Sound safety to aviod wrong taking.
- Reliable emergency system:When system error occurs and the door can not open, the administrator can use the administration key to open any compartments. Even if the power is off, the compartments can also be opened by manual.
- Friendly clear LCD wide screen for operation instruction.
- Local radio host recording for storage safety.
- Reliable data recording for checking.
- Best usage of your space.
- CE and RoHS certified.
- Options:IC card,ID card,coin,or self-setting code.



Spec	Cabinet Size (W*D*H/mm)	Box Size (W*D*H/mm)	Power (W)	Color option
CT20	1386*350*1921	274*330*230	85-265V 50-60Hz Standby 10W Working 30W	Blue Green Red etc
CT32	1386*400*1921	274*380*370		



Changshu Catec Electronic Intl Ltd

#188 Suzhou Road, Yushan Hi-Tech Park,

Changshu-city 21500, Jiangsu, China

Tel: +86-512-52899768

Fax: +86-512-52780868

Service line: 400-6099-878

URL: www.labprovide.com

Email: catec@labprpvide.com

Skype: catec2012, natalie213@hotmail.com, terryoKing